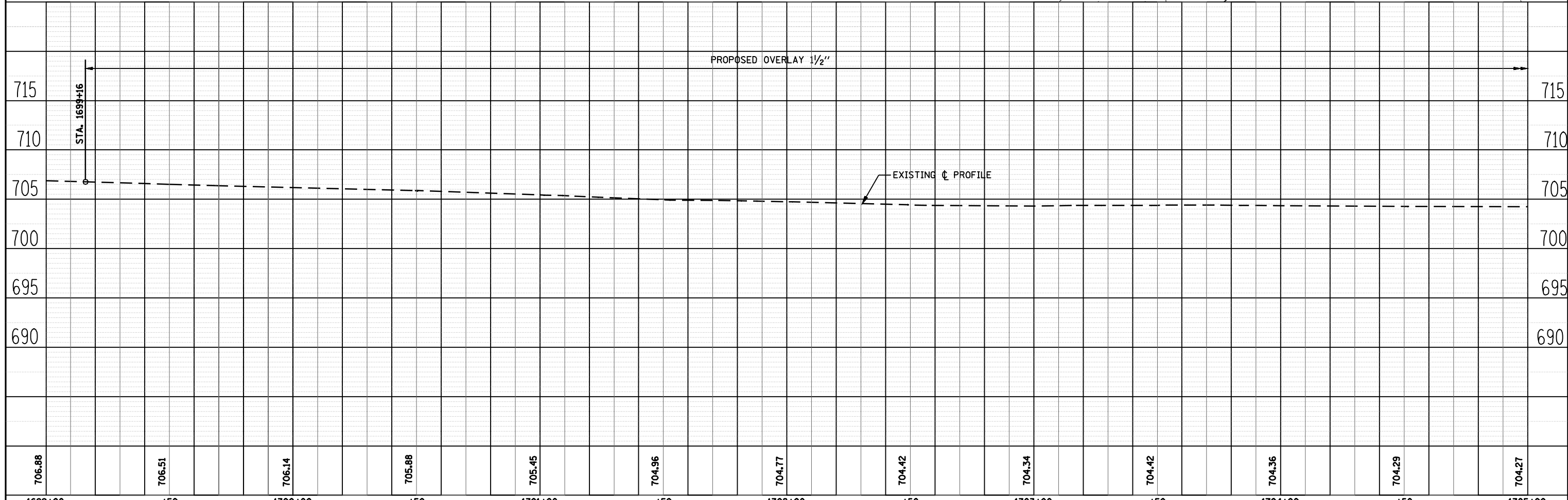
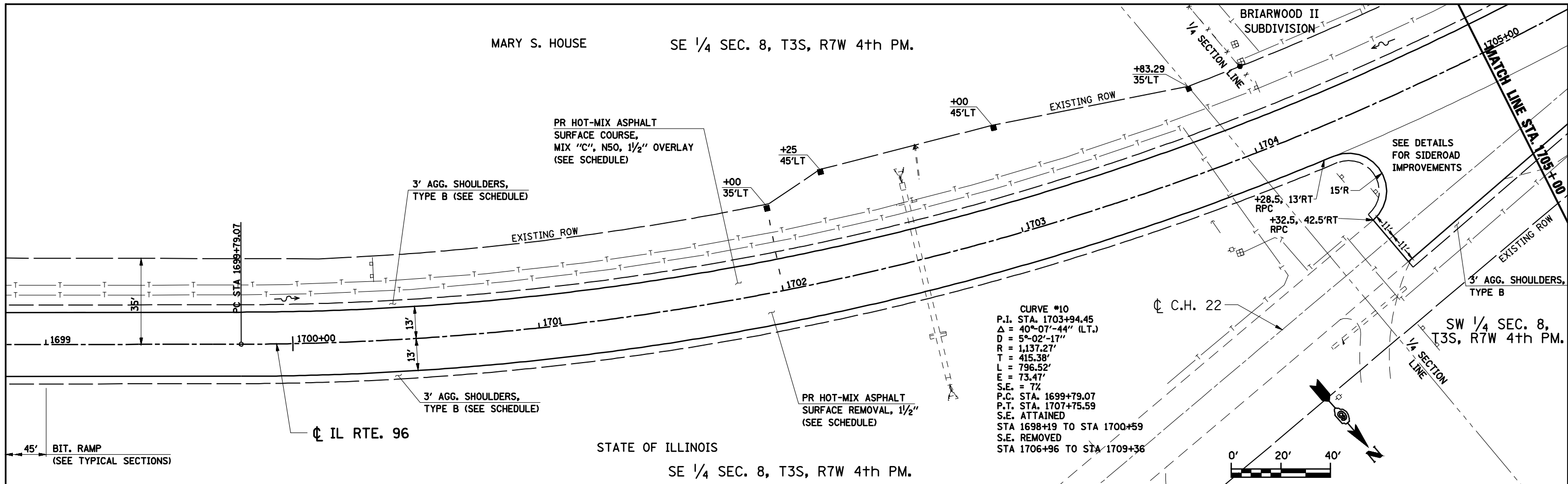


DATE	
BY	
REVIEWED	
PLANNED	
NOTE BOOK	
NO.	

DATE	
BY	
REVIEWED	
PLANNED	
NOTE BOOK	
NO.	



FILE NAME =	USER NAME = laughlinr1	DESIGNED -	REVISED -
c:\pwork\pwidot\LAUGHLINR1\dms30940\672826-sh-t-p1npr.f1.dgn		DRAWN -	REVISED -
		CHECKED -	REVISED -
		DATE -	REVISED -

STATE OF ILLINOIS DEPARTMENT OF TRANSPORTATION

SCALE: 1" = 20' SHEET NO. OF SHEETS STA. 1698+55 TO STA. 1705+00

F.A.S. RTE.	SECTION	COUNTY	TOTAL SHEETS NO.
1597	12(RS-7) & 13(RS-6)	ADAMS	29 9
FED. ROAD DIST. NO.			ILLINOIS FED. AID PROJECT

CONTRACT NO. 72B26