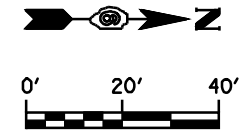
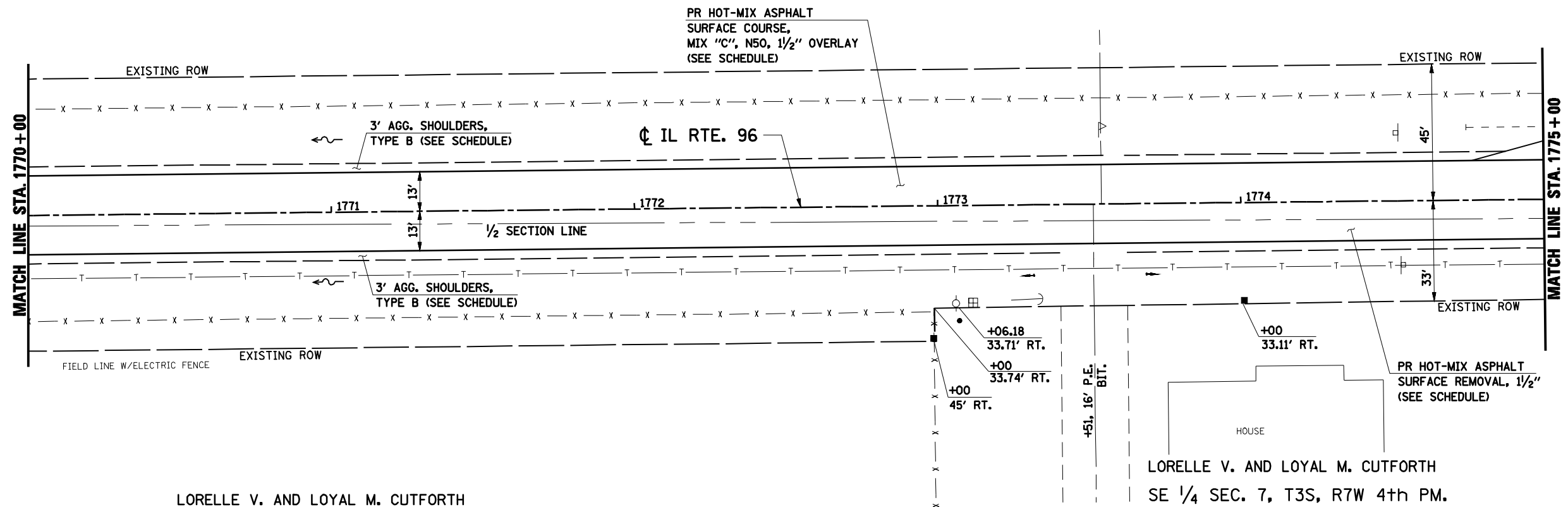
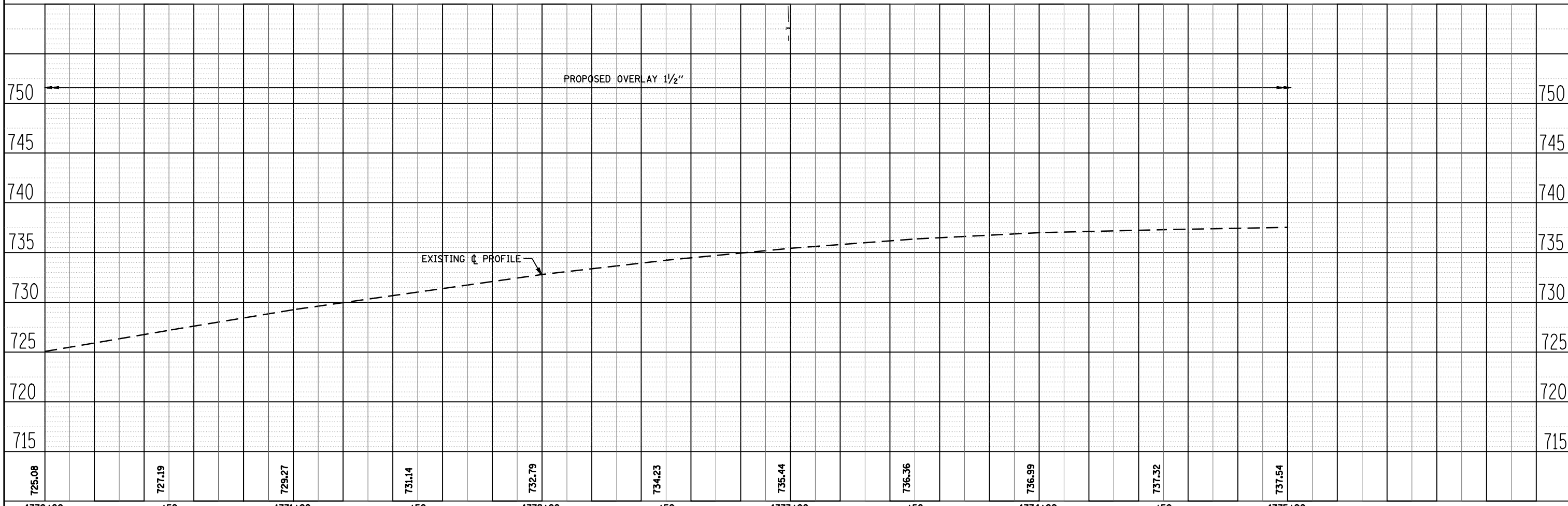


SW 1/4 SEC. 7, T3S, R7W 4th PM.  
ALEXANDER J. HOUSE & LYNN V. HOUSE



LORELLE V. AND LOYAL M. CUTFORTH

LORELLE V. AND LOYAL M. CUTFORTH  
SE 1/4 SEC. 7, T3S, R7W 4th PM.



DATE	
BY	
REVIEWED	
PLANNED	
NOTE BOOK	
NO.	

DATE	
BY	
REVIEWED	
PLANNED	
NOTE BOOK	
NO.	

FILE NAME =	USER NAME = laughlinr1	DESIGNED -	REVISED -
c:\pwwork\p1\DOT\LAUGHLINR1\dms30940\672826-sh1-p1\prf3.dgn		DRAWN -	REVISED -
		CHECKED -	REVISED -
		DATE -	REVISED -

STATE OF ILLINOIS  
DEPARTMENT OF TRANSPORTATION

SCALE: SHEET NO. OF SHEETS STA. TO STA.

F.A.S. RTE.	SECTION	COUNTY	TOTAL SHEETS	SHEET NO.
1597	12(RS-7) & 13(RS-6)	ADAMS	29	21
CONTRACT NO. 72B26				
FED. ROAD DIST. NO.		ILLINOIS FED. AID PROJECT		