
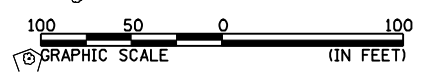
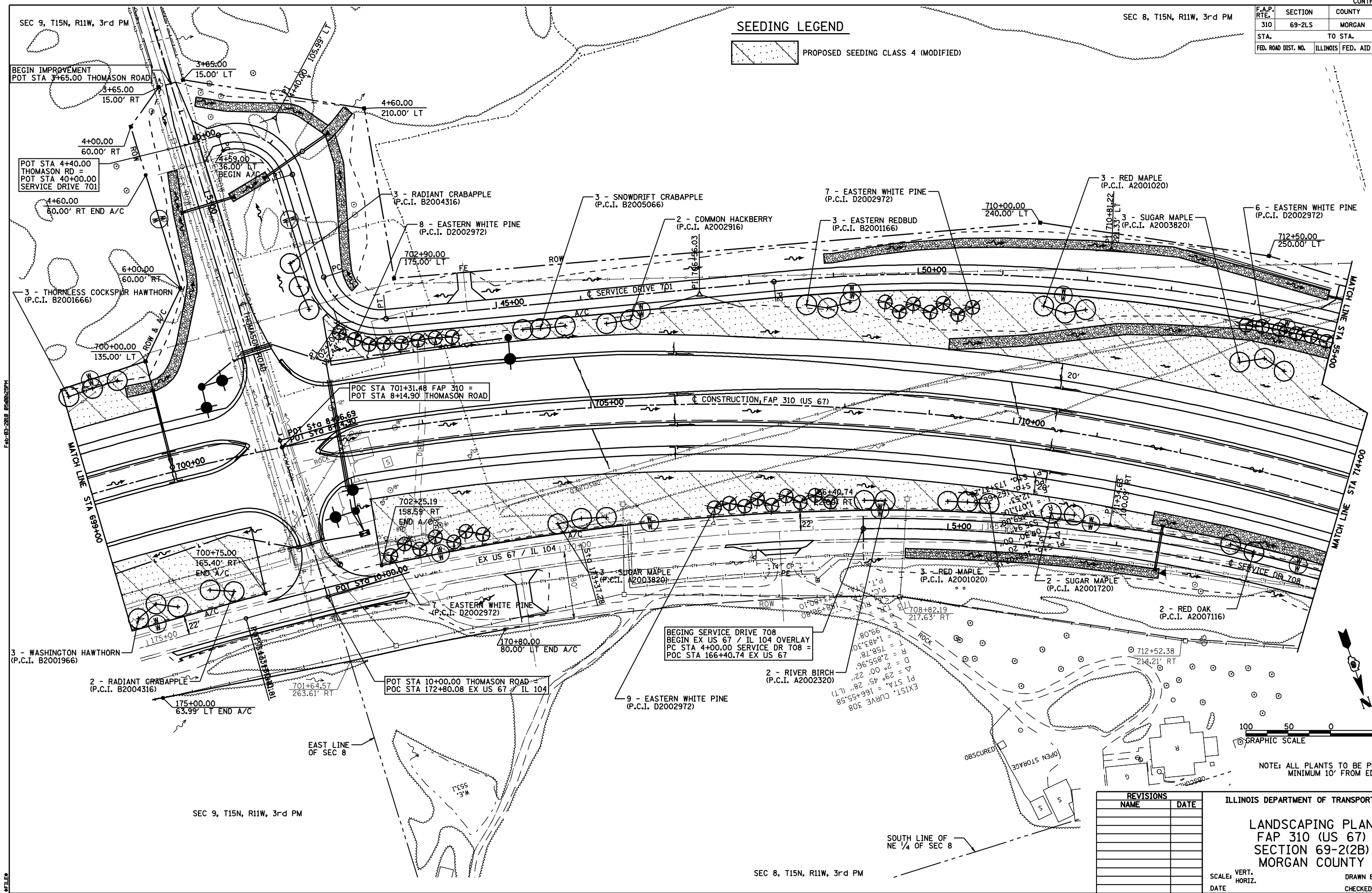


F.A.P. RTE.	SECTION	COUNTY	TOTAL SHEETS	SHEET NO.
310	69-2LS	MORGAN	16	9
STA.		TO STA.		
FED. ROAD DIST. NO.		ILLINOIS FED. AID PROJECT		

SEEDING LEGEND

 PROPOSED SEEDING CLASS 4 (MODIFIED)



NOTE: ALL PLANTS TO BE PLANTED MINIMUM 10' FROM EDGE ROW

REVISIONS	
NAME	DATE

ILLINOIS DEPARTMENT OF TRANSPORTATION

LANDSCAPING PLAN
FAP 310 (US 67)
SECTION 69-2(B)
MORGAN COUNTY

SCALE: VERT. _____
 HORIZ. _____
 DATE _____

DRAWN BY _____
 CHECKED BY _____

SEC 9, T15N, R11W, 3rd PM

SEC 9, T15N, R11W, 3rd PM

SEC 8, T15N, R11W, 3rd PM

FAP 310 STA 699+00 TO STA 714+00