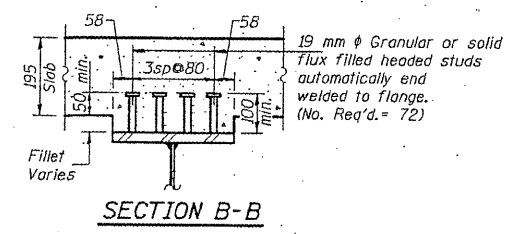
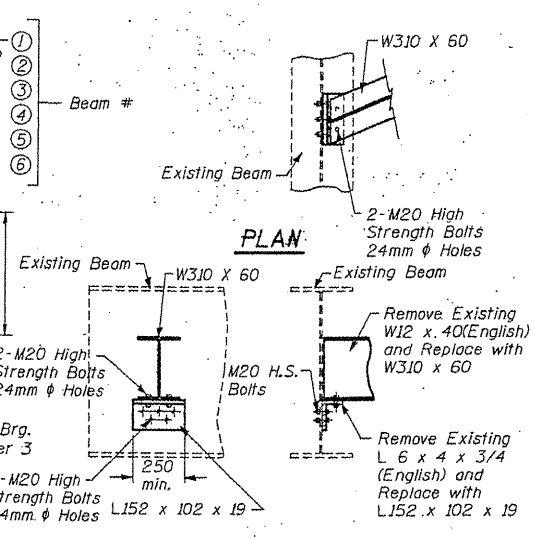
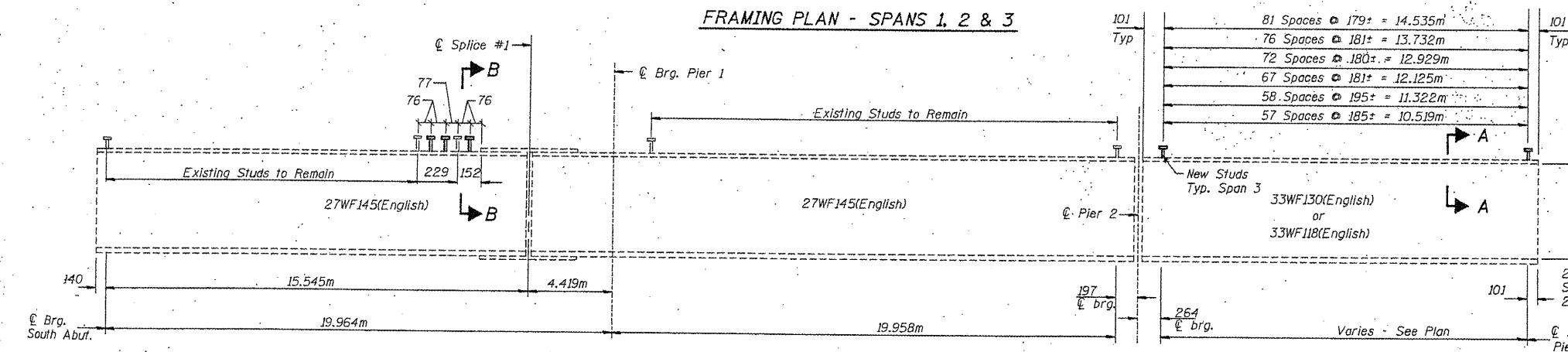
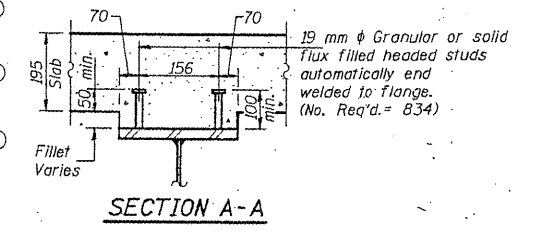
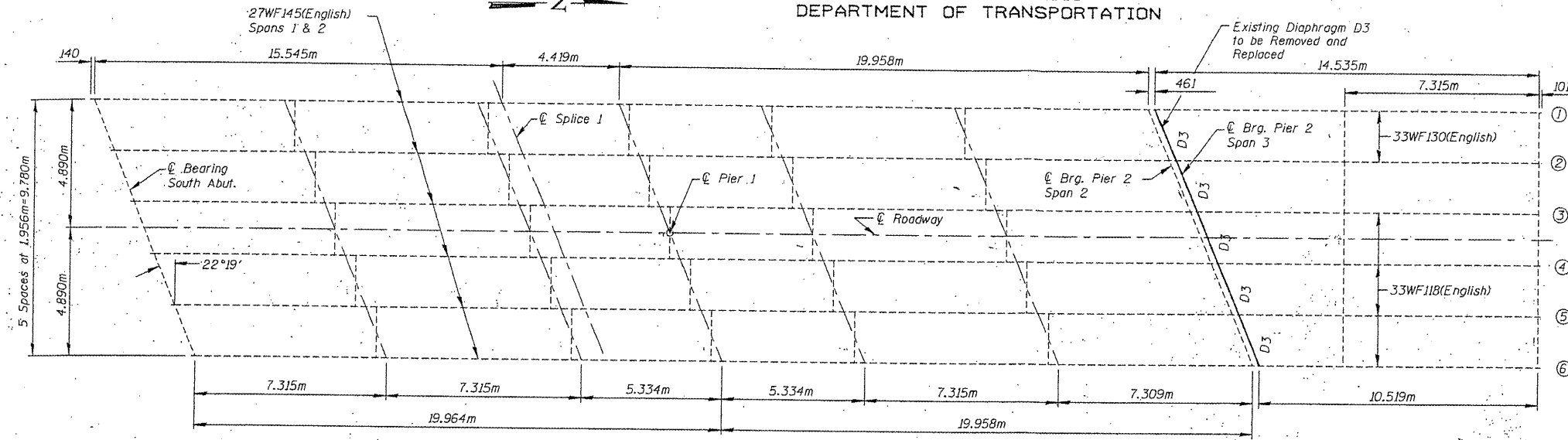


PROJECT NO.	SECTION	QUANTITY	UNITS	PRICE
63	*	ADAMS	211	116
F.A.P. 63		ADAMS		
F.A.P. 310		IL 104		
* (78-3VHB)R				



NOTES:

- Replace Stud Shear Connectors damaged during removal of existing concrete deck. Cost to be included in the contract unit price for Removal of Existing Concrete Deck.
- The cost for removal of existing structural steel to be included in the contract unit price for F & E Structural Steel.
- Use the existing holes on the web of the existing beam to field drill holes in the new angles.
- Cost of field drilling is included with the cost of F & E Structural Steel.

Item	Unit	Total
F & E Structural Steel	kg	705

DESIGNED	AG
CHECKED	DAF
DRAWN	BJB
CHECKED	ECM

STRUCTURAL STEEL DETAILS
SPANS 1, 2, AND 3
F.A.P. RTE 63 US RTE 24/N. 3RD ST.
OVER CEDAR CREEK
B. N. RAILROAD AND PARK ROAD
SECTION (78-3VHB)R
ADAMS COUNTY
STA. 3+283.664
STRUCTURE NO. 001-0011

FOR INFORMATION ONLY

EXISTING PLANS, SN 001-0011
FAP 63 (US 24) & 310 (IL 104)
D6REHAB BDGE PAINTING 2010-1
ADAMS & MORGAN COUNTIES