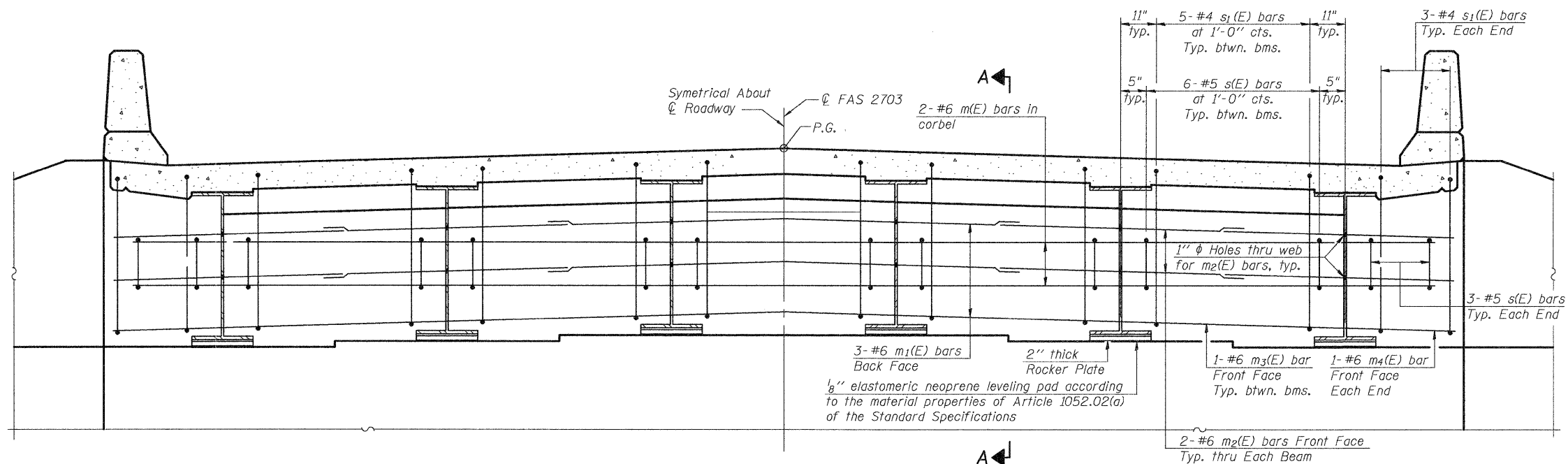


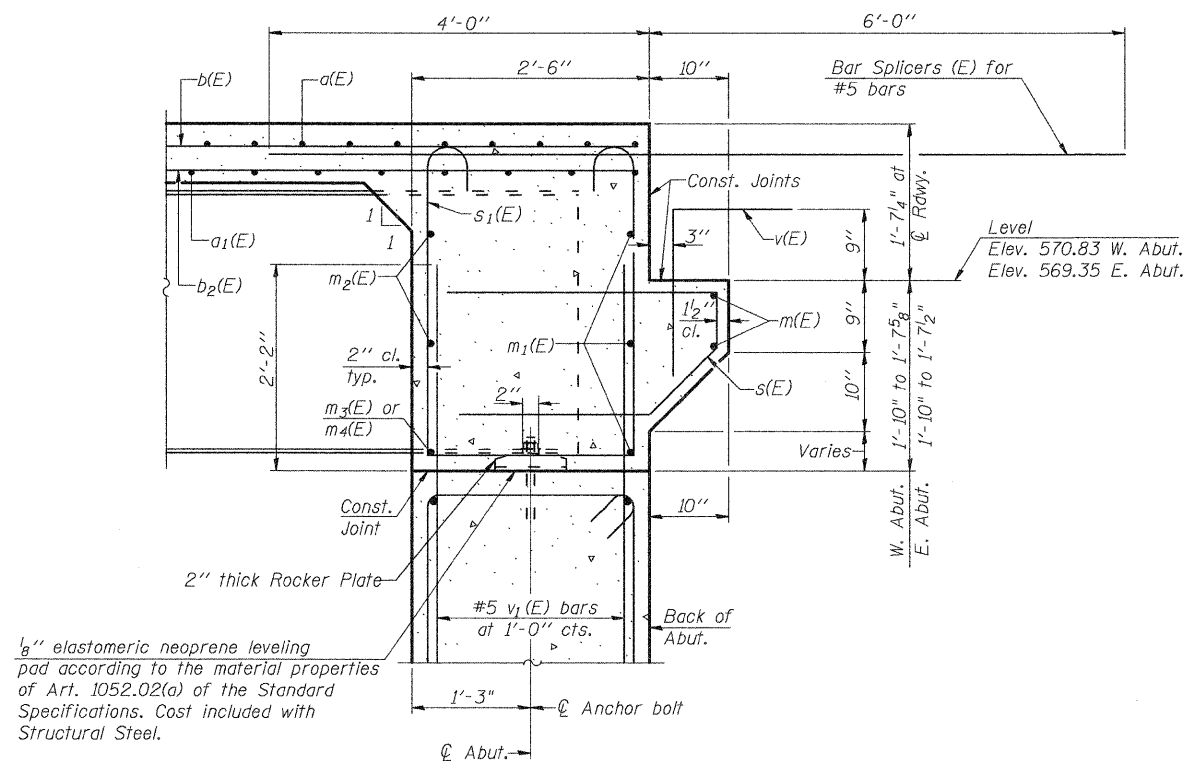
STATE OF ILLINOIS  
DEPARTMENT OF TRANSPORTATION



**DIAPHRAGM ELEVATION AT ABUTMENT**  
(Looking West) (East Abutment Similar)

Notes:  
Reinforcement bars in diaphragm are billed with superstructure on sheet 8 of 22.  
Concrete in diaphragm is included with Concrete Superstructure on sheet 8 of 22.  
For details of bars  $s_1(E)$  see sheet 8 of 22.

**MIN. BAR LAP**  
#6 bar = 2'-7"



**SECTION A-A**

**DIAPHRAGM DETAILS**  
**KINMUNDY/LOUISVILLE ROAD**  
**OVER ILLINOIS CENTRAL RR**  
**STA. 475+50.44**

DESIGNED	B.B.
CHECKED	C.J.F.
DRAWN	J.G.
CHECKED	C.J.F. & B.B.



**BERNARDIN  
LOCHMUELLER &  
ASSOCIATES, INC.**

3 Oak Drive  
Maryville, IL 62062-5635  
Local-(618) 288-4665  
Fax 618-288-4666

SHEET NO. 9 22 SHEETS	F.A.S. RTE. 2703	SECTION (9-VBR)B	COUNTY CLAY	TOTAL SHEETS 65	SHEET NO. 31
	SN 013-0044		CONTRACT NO. 74136		
FED. ROAD DIST. NO. 7 ILLINOIS FED. AID PROJECT					