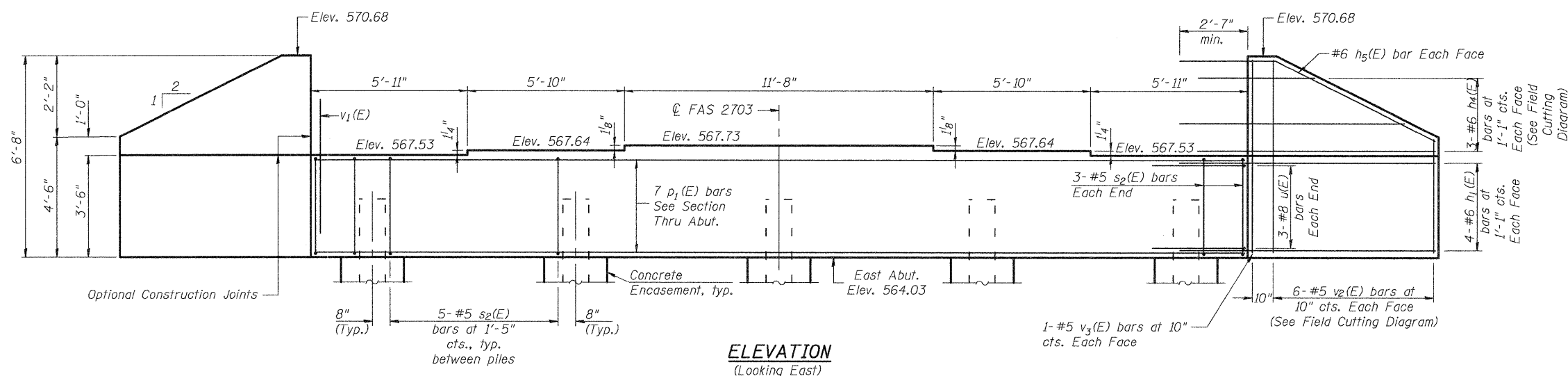
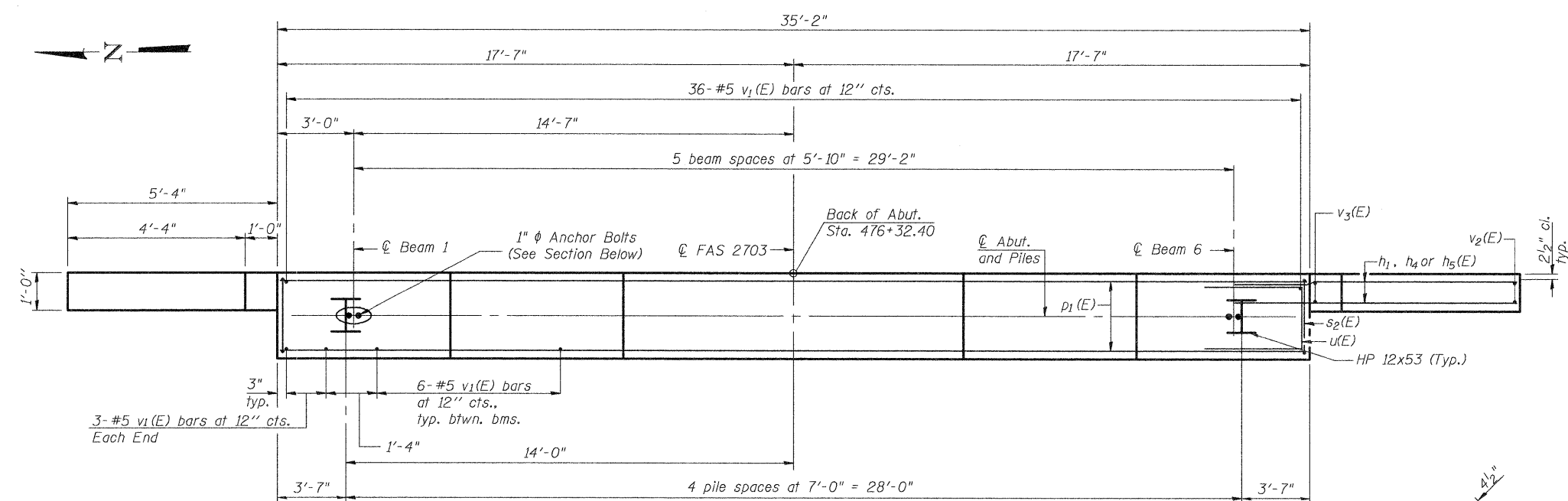


STATE OF ILLINOIS  
DEPARTMENT OF TRANSPORTATION



**ELEVATION**  
(Looking East)

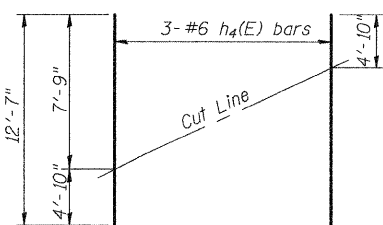


**PLAN**

**PILE DATA**

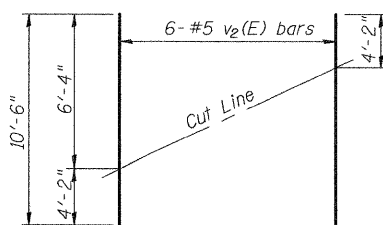
Type: HP 12x53 with Pile Shoes  
Nominal Required Bearing: 419 k  
Factored Resistance Available: 210 k  
Est. Length: 60'-0"  
No. Production Piles: 4  
No. Test Piles: 1

DESIGNED	B.B.
CHECKED	C.J.F.
DRAWN	J.G.
CHECKED	C.J.F. & B.B.



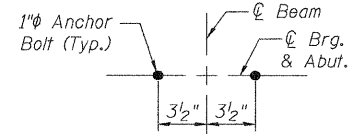
**h4 FIELD CUTTING DIAGRAM**

Order h4(E) full length. Cut as shown and use remainder of bars in opposite face.

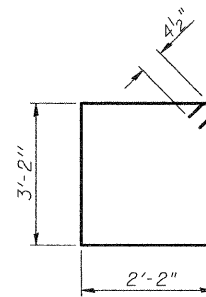


**v2 FIELD CUTTING DIAGRAM**

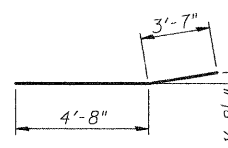
Order v2(E) full length. Cut as shown and use remainder of bars in opposite face.



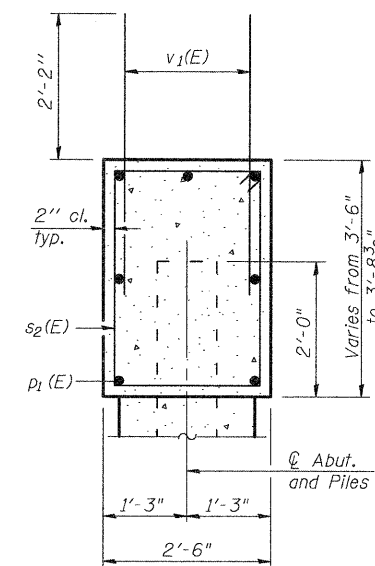
**ANCHOR BOLT DETAIL**



**BAR s2(E)**



**BAR h5(E)**



**SEC. THRU ABUT.**

**BILL OF MATERIAL**

Bar	No.	Size	Length	Shape
h1(E)	16	#6	8'-5"	—
h4(E)	6	#6	12'-7"	—
h5(E)	4	#6	8'-3"	—
p1(E)	7	#8	34'-10"	—
s2(E)	26	#5	11'-5"	□
u(E)	6	#8	8'-10"	—
v1(E)	72	#6	4'-4"	—
v2(E)	12	#5	10'-6"	—
v3(E)	4	#5	6'-4"	—
Structure Excavation		Cu. Yd.	101.5	
Concrete Structures		Cu. Yd.	14.0	
Reinforcement Bars, Epoxy Coated		Pound	2100	
Furnishing - Steel Piles, HP 12x53		Foot	240	
Driving Piles		Foot	240	
Test Pile, HP 12x53		Each	1	
Concrete Encasement		Cu. Yd.	1.7	
Pile Shoes		Each	5	

Notes:  
Pour steps monolithically with cap.  
See Sheet 2 of 22 for section thru Integral Abutment showing drainage details.  
For details of piles and Concrete Encasement See Sheet 19 of 22  
Space reinforcement in cap to miss anchor bolts.

**EAST ABUTMENT**  
**KINMUNDY/LOUISVILLE ROAD**  
**OVER ILLINOIS CENTRAL RR**  
**STA. 475+50.44**

SHEET NO. 13 22 SHEETS	F.A.S. RTE.	SECTION	COUNTY	TOTAL SHEETS	SHEET NO.
	2703	(9-VBR)B	CLAY	65	35
SN 013-0044			CONTRACT NO.		
FED. ROAD DIST. NO. ILLINOIS FED. AID PROJECT					



**BERNARDIN  
LOCHMUELLER &  
ASSOCIATES, INC.**

3 Oak Drive  
Marville, IL 62962-5695  
Local (618) 288-4665  
Fax 618-288-4666