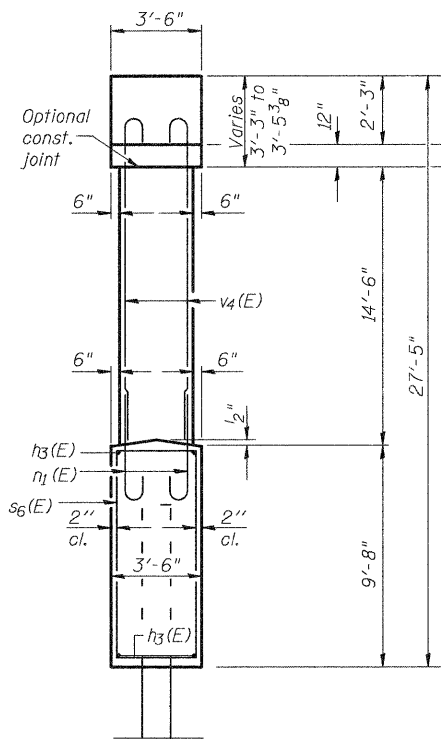


STATE OF ILLINOIS
DEPARTMENT OF TRANSPORTATION

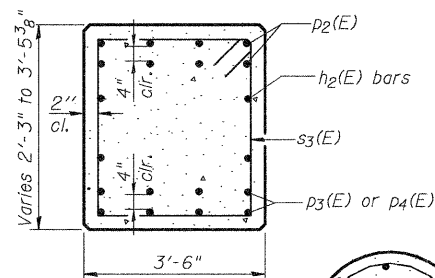
Notes:
Space reinforcement in cap to miss anchor bolts.
Four steps monolithically with cap.
For details of piles, see sheet 19 of 22.

PILE DATA

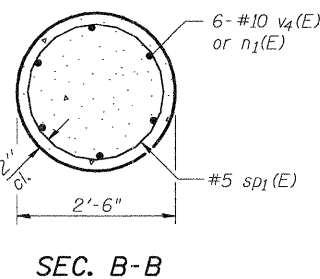
Type: HP 12x63 with Pile Shoes
Nominal Required Bearing: 497
Factored Resistance Available: 249
Est. Length: 31'-0"
No. Production Piles: 6
No. Test Piles: 1



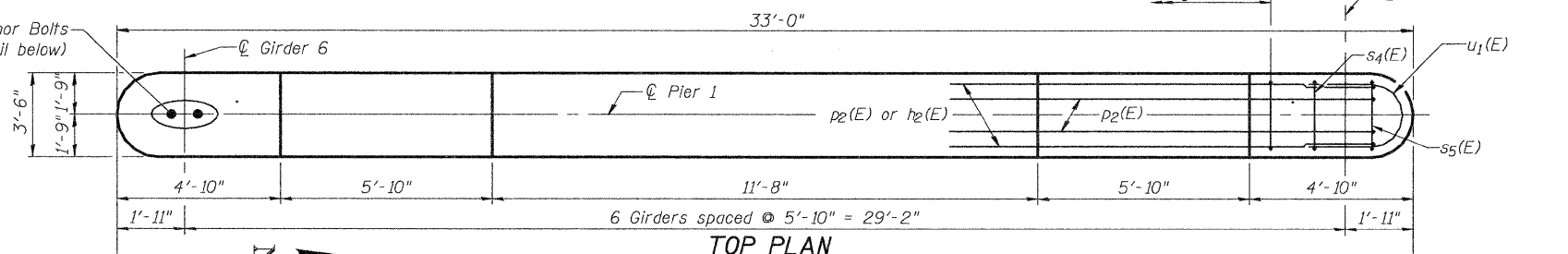
END VIEW



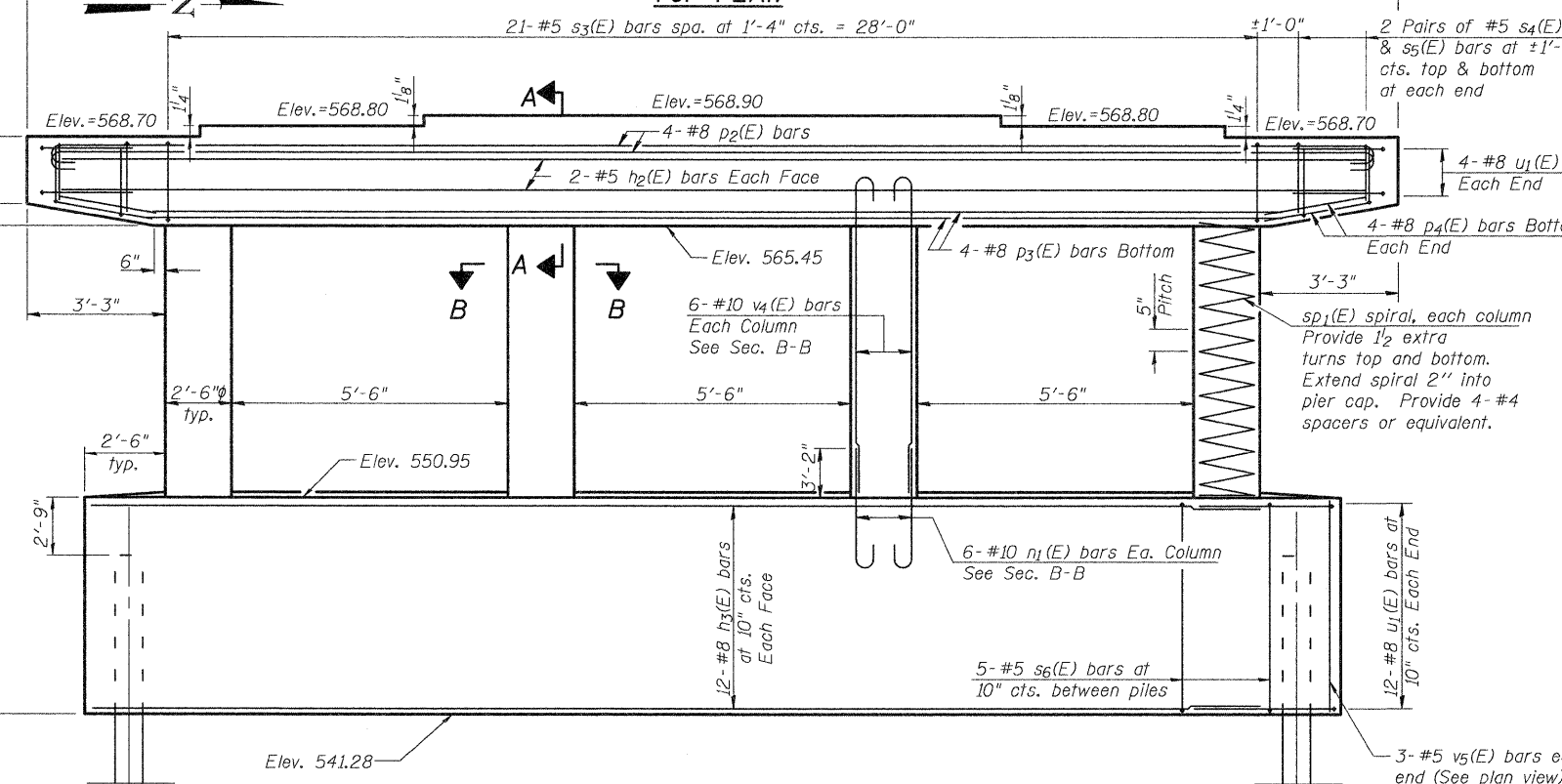
SEC. A-A



SEC. B-B



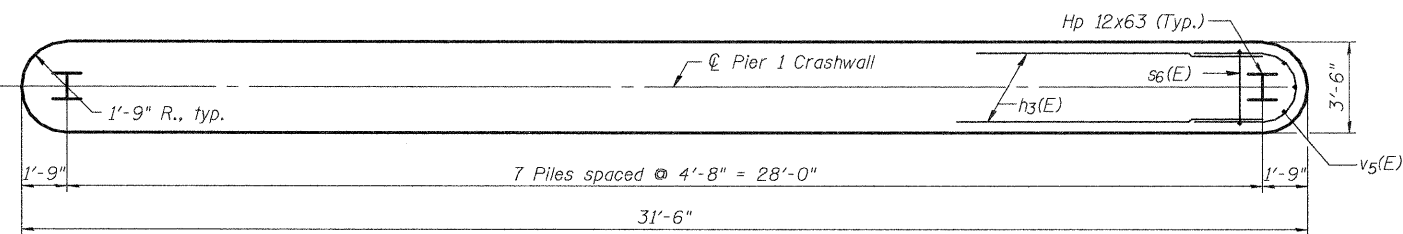
TOP PLAN



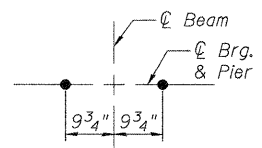
ELEVATION

(Looking West)

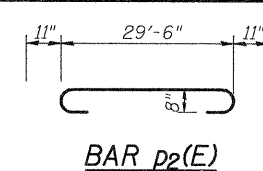
Note: Top of Pile Elev. = 548.20



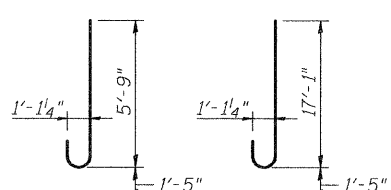
CRASHWALL PLAN



ANCHOR BOLT DETAIL

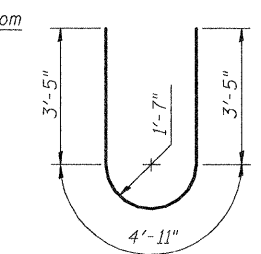


BAR p2(E)

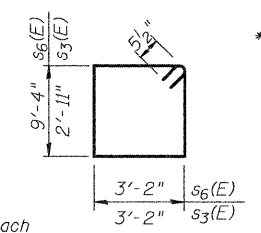


BAR n1(E)

BAR v4(E)

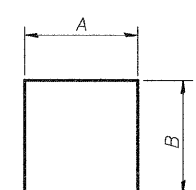


BAR u1(E)



BAR s3(E)

BAR s6(E)



BARS

A & B DIMENSIONS

Bar	A	B
S4	3'-2"	2'-7"
S5	3'-2"	2'-3"

BILL OF MATERIAL

Bar	No.	Size	Length	Shape
h2(E)	4	#5	29'-6"	—
h3(E)	24	#8	28'-0"	—
n1(E)	24	#10	7'-2"	U
p2(E)	8	#8	31'-4"	U
p3(E)	8	#8	27'-2"	—
p4(E)	16	#8	2'-9"	—
s3(E)	21	#5	13'-1"	□
s4(E)	4	#5	8'-4"	□
s5(E)	4	#5	7'-8"	□
s6(E)	30	#5	25'-9"	□
sp1(E)	4	#5	14'-2"	W
u1(E)	32	#8	11'-9"	U
v4(E)	24	#10	18'-6"	U
v5(E)	6	#5	9'-4"	—
Structure Excavation		Cu. Yd.	91.0	
Concrete Structures		Cu. Yd.	63.0	
Reinforcement Bars, Epoxy Coated		Pound	9250	
Furnishing - Steel Piles, HP 12x63		Foot	186	
Driving Piles, HP 12x63		Foot	186	
Test Pile HP 12x63		Each	1	
Pile Shoes		Each	7	

** Length is height of spiral.

PIER 1
KINMUNDY/LOUISVILLE ROAD
OVER ILLINOIS CENTRAL RR
STA. 475+50.44

DESIGNED	B.B.
CHECKED	C.J.F.
DRAWN	J.G.
CHECKED	C.J.F. & B.B.



BERNARDIN
LOCHMUELLER &
ASSOCIATES, INC.

3 Oak Drive
Maryville, IL 62062-5635
Local (618) 288-4685
Fax 618-288-4686

SHEET NO. 14	F.A.S. RTE.	SECTION	COUNTY	TOTAL SHEETS	SHEET NO.
	2703	(9-VBR)B	CLAY	65	36
22 SHEETS	SN 013-0044		CONTRACT NO. 74136		
FED. ROAD DIST. NO. 7 ILLINOIS FED. AID PROJECT					

29917.PW 10/13/2008 10:18:00 AM 0304474636.dgn