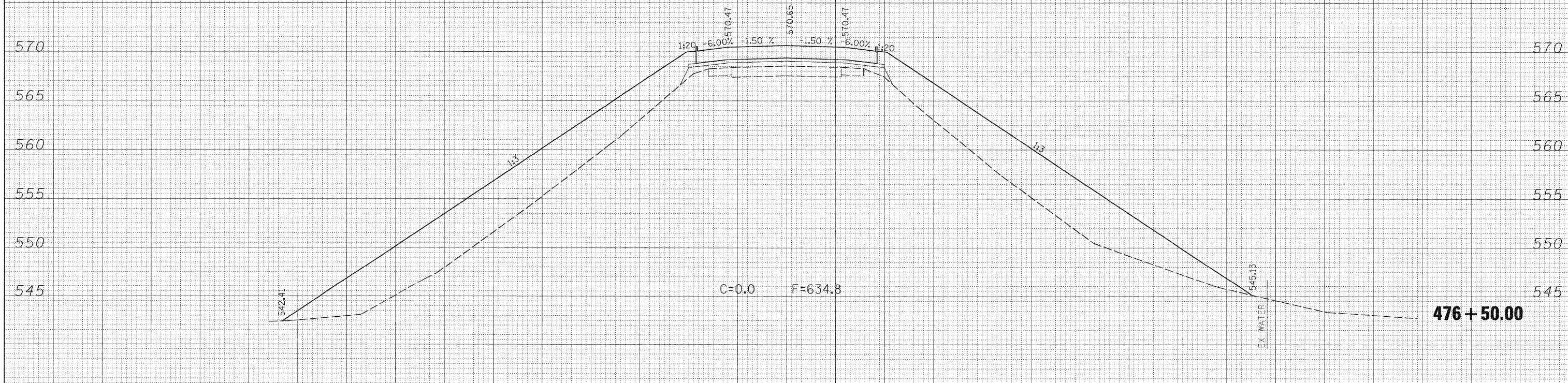
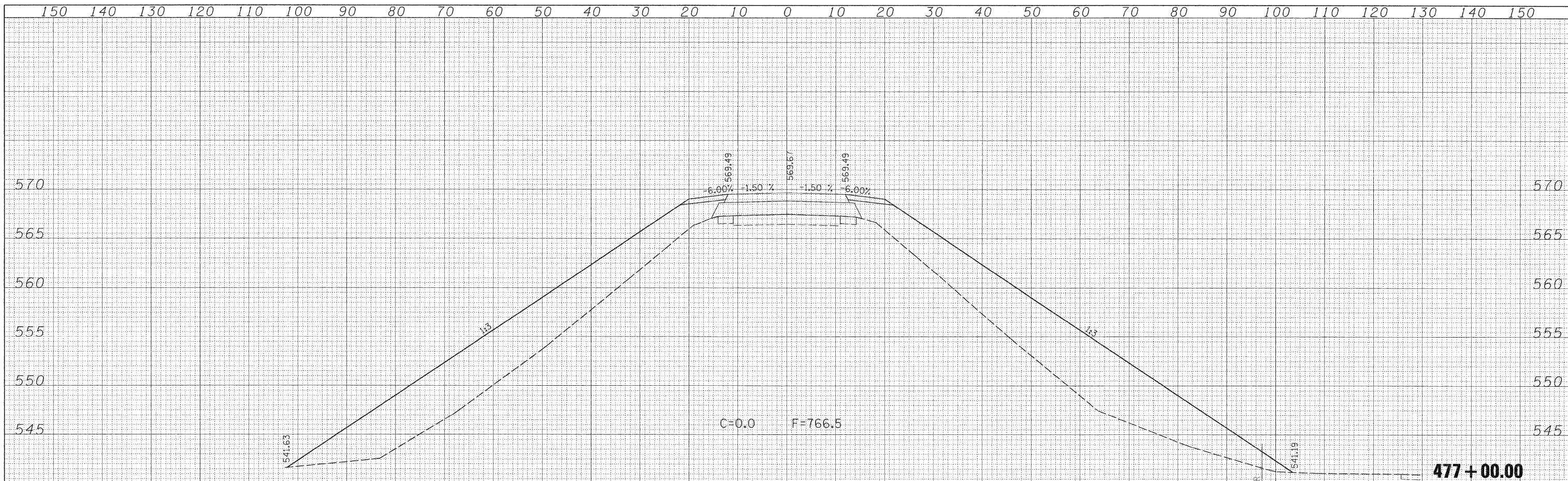


DATE	
BY	
FINAL SURVEY	
SURVEY	
NOTE BOOK	
PLATE	
AREAS	
CHECKED	
NO.	

DATE	
BY	
ORIGINAL SURVEY	
SURVEY	
NOTE BOOK	
PLATE	
AREAS	
CHECKED	
NO.	



FILE NAME =	USER NAME = paul	DESIGNED - JLS	REVISED -	STATE OF ILLINOIS DEPARTMENT OF TRANSPORTATION	CROSS SECTIONS - KINMUNDY/LOUISVILLE ROAD (FAS 2703)			F.A.S. RTE. 2703	SECTION (9-VBRIR)	COUNTY CLAY	TOTAL SHEETS 65	SHEET NO. 56
S:\Projects\407-0008 08D Dist 7 Various\0 2 Kinmudy over	vdgn\ksah_KINMUNDY.dgn	DRAWN - MAB	REVISED -		SCALE: 1"=10'	SHEET NO. 12 OF 21 SHEETS	STA. 476+50.00 TO STA. 477+00.00	FED. ROAD DIST. NO.	[ILLINOIS] FED. AID PROJECT	CONTRACT NO. 74136		
PLOT SCALE = 10.0000' / IN.		CHECKED - BRM	REVISED -									
PLOT DATE = 12/3/2008		DATE - 5-20-08	REVISED -									