

STATE OF ILLINOIS  
DEPARTMENT OF TRANSPORTATION  
DIVISION OF HIGHWAYS

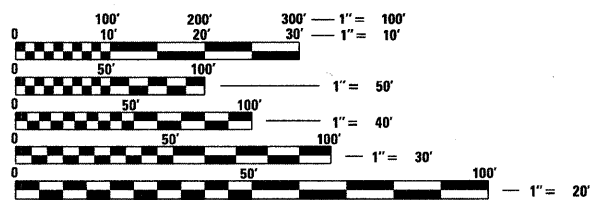
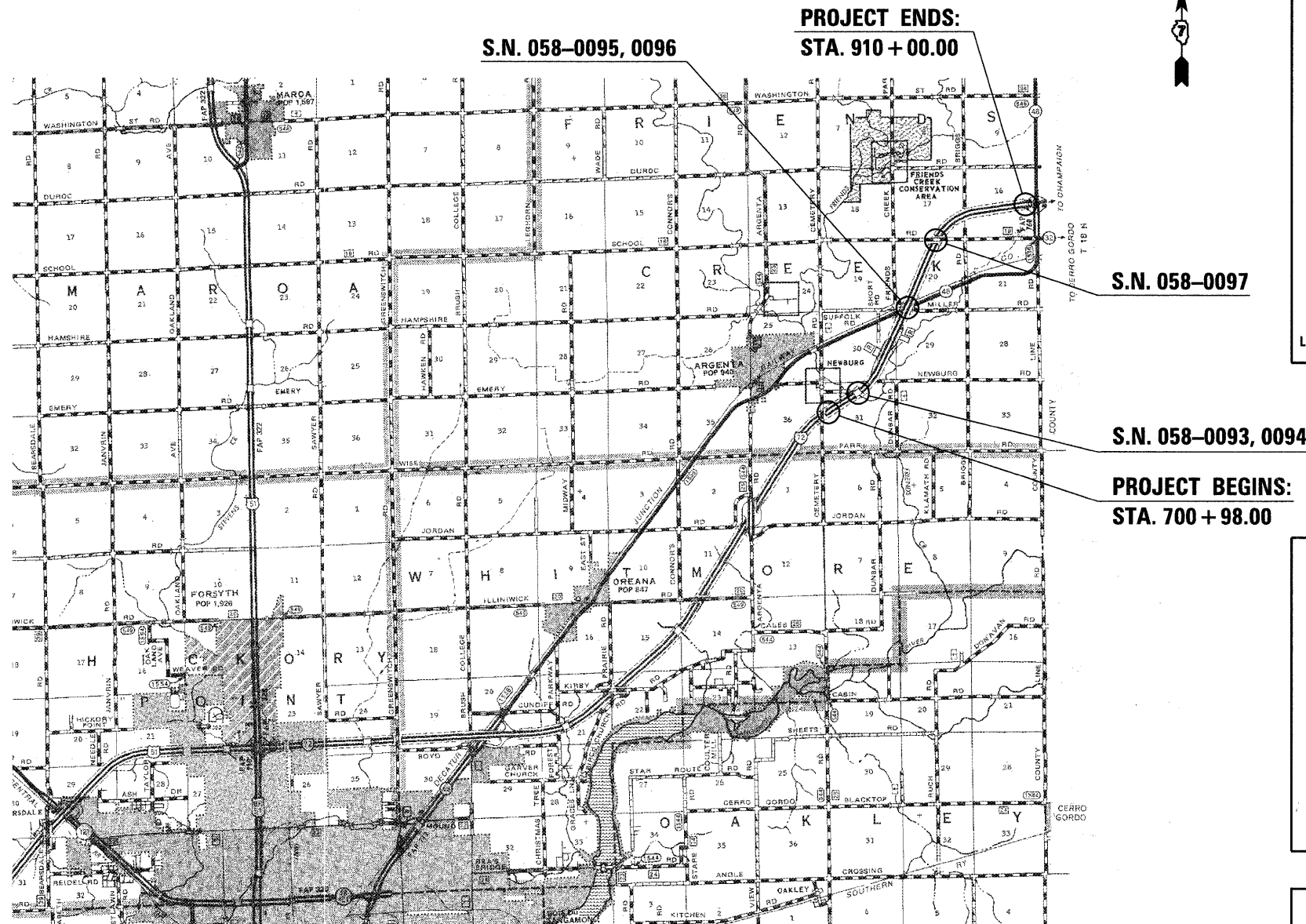
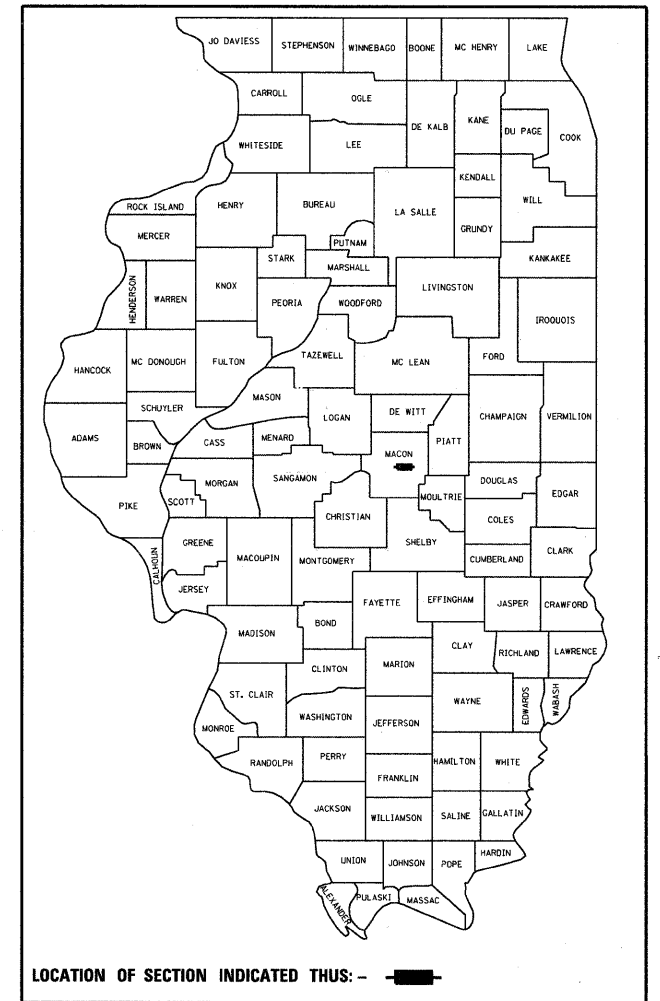
**PROPOSED  
HIGHWAY PLANS**

F.A.I. ROUTE 72  
SECTION 66(B,HVB,HB-1)BR  
PROJECT: *IM-072-1(080)150*  
MACON COUNTY  
C-97-112-08

FOR INDEX OF SHEETS, SEE SHEET NO. 2

F.A.I. RTE.	SECTION	COUNTY	TOTAL SHEETS	SHEET NO.
72	66(B,HVB,HB-1)BR	MACON	83	1
FED. ROAD DIST. NO.		ILLINOIS	CONTRACT NO. 74343	

D-97-059-08



FULL SIZE PLANS HAVE BEEN PREPARED USING STANDARD ENGINEERING SCALES. REDUCED SIZED PLANS WILL NOT CONFORM TO STANDARD SCALES. IN MAKING MEASUREMENTS ON REDUCED PLANS, THE ABOVE SCALES MAY BE USED.

J.U.L.I.E.  
JOINT UTILITY LOCATION INFORMATION FOR EXCAVATION  
1-800-892-0123  
OR 811

TOWNSHIP: FRIENDS CREEK  
PROJECT ENGINEER - TOM RONAN  
PROJECT MANAGER - JEFF DAVISON  
ADT = 10,533  
CONTRACT NO. 74343

GROSS LENGTH = 20,902 FT. = 3.96 MI.  
NET LENGTH = 20,902 FT. = 3.96 MI.

STATE OF ILLINOIS  
DEPARTMENT OF TRANSPORTATION  
DIVISION OF HIGHWAYS

SUBMITTED *October 1, 20 09*

*Roger L. Shindell*  
DEPUTY DIRECTOR OF HIGHWAYS, REGION ENGINEER

*December 4, 20 09*  
*Charles G. Ingersoll*  
ENGINEER OF DESIGN AND ENVIRONMENT

*December 4, 20 09*  
*Christine M. Reed*  
DIRECTOR OF HIGHWAYS, CHIEF ENGINEER

**PRINTED BY THE AUTHORITY  
OF THE STATE OF ILLINOIS**