

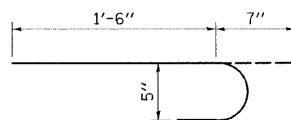
STRUCTURAL REPAIR

Cost Included In Structural Repair of Concrete (Depth <5')

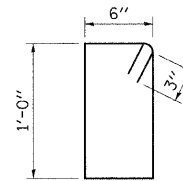
PATCH NUMBER	STATION	AREA SQ. FT.
1	718+55	1.0
2	721+07	4.0
3	721+26	2.0
4	721+72	2.0
	Total	9.0

SOUTH PARAPET
Looking South
BILL OF MATERIAL

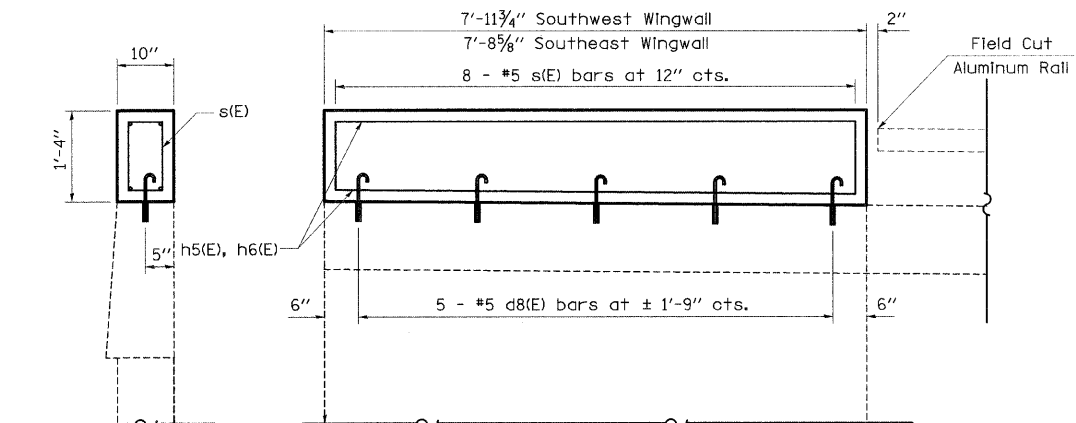
BAR	NUMBER OF BARS	SIZE	LENGTH	SHAPE	REINFORCEMENT BARS (EPOXY COATED)	CONCRETE SUPERSTRUCTURE
d8(E)	10	#5	2' - 1"	—		
s(E)	18	#5	3' - 6"	□		
h5(E)	4	#5	7' - 7"	—		
h6(E)	4	#5	7' - 4"	—		
					POUND	120
					CU YD	0.7



BAR d8(E)



BAR s(E)



* Epoxy Grouted Bars In accordance with Art. 584 of the Standard Specs.

BRIDGE APPROACH WINGWALL IMPROVEMENT DETAIL
Southeast & Southwest Wingwalls