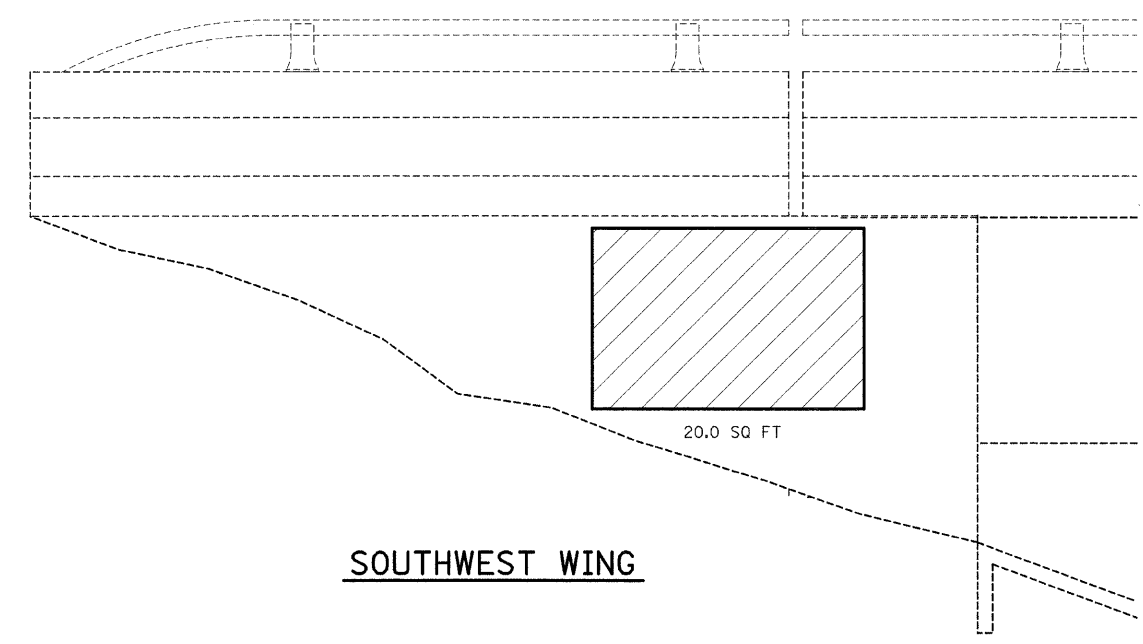
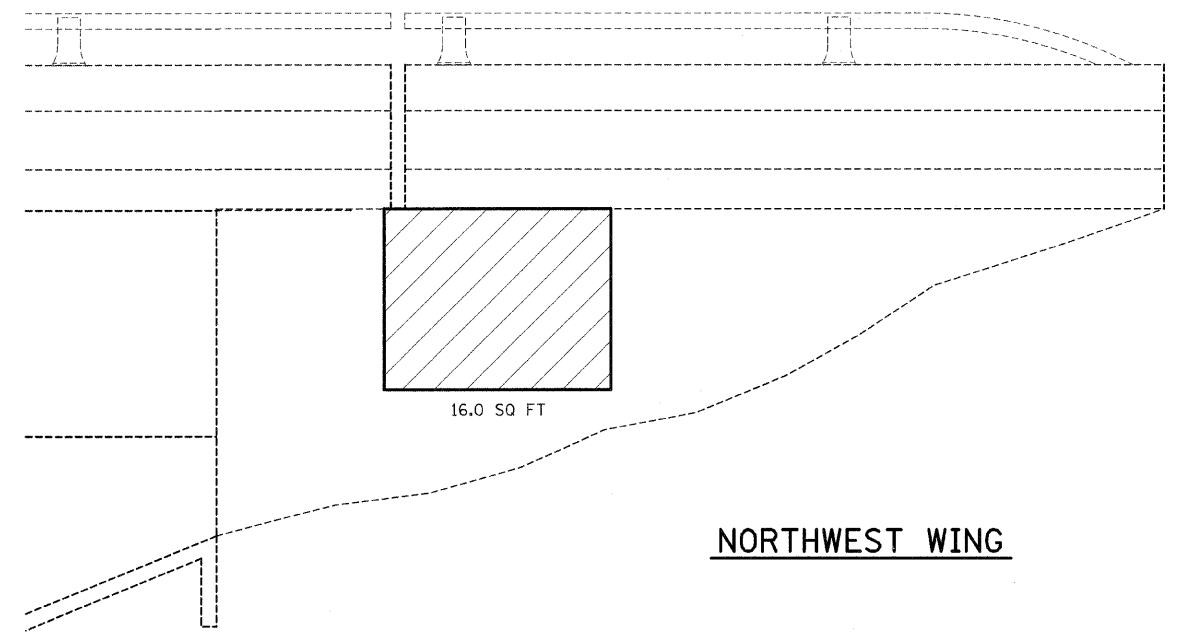


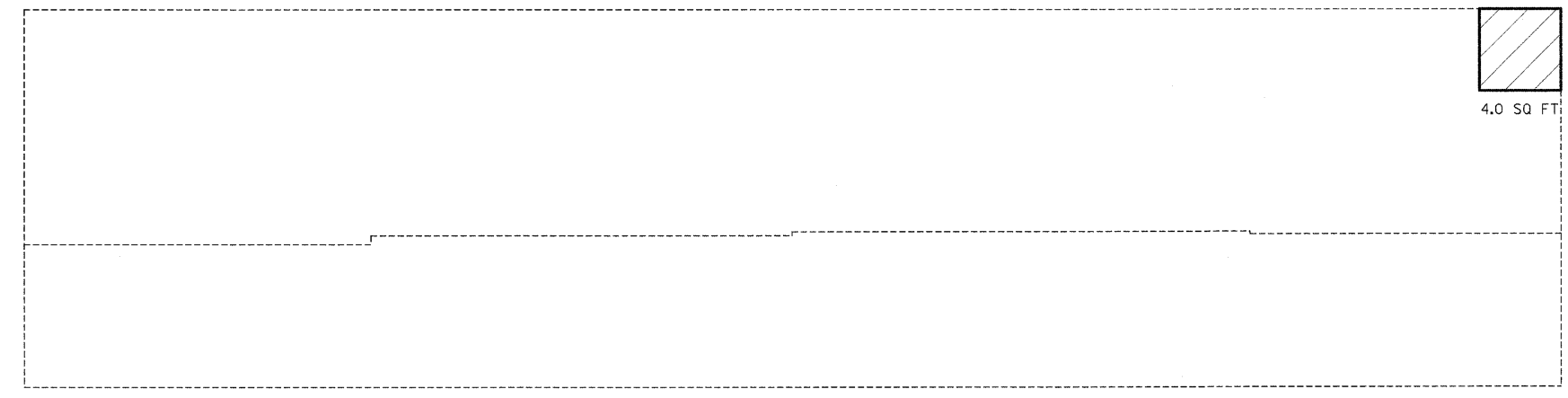
NOTE: QUANTITIES ARE ESTIMATED. ACTUAL QUANTITIES TO BE DETERMINED BY THE RESIDENT ENGINEER.



SOUTHWEST WING



NORTHWEST WING



WEST ABUTMENT FACE

 Structural Repair of Concrete (Depth < 5")

FILE NAME = c:\pwork\pwwid01\SWARTZRW\dms37779\k	USER NAME = swartzrw enbridge.dgn	DESIGNED - DRAWN -	REVISED - REVISED -	STATE OF ILLINOIS DEPARTMENT OF TRANSPORTATION	STRUCTURAL REPAIR - WEST ABUTMENT SN 058-0097		F.A.I. RTE. 72	SECTION 66(B,HVB,HB-1)BR	COUNTY MACON	TOTAL SHEETS 83	SHEET NO. 74
PLOT SCALE = 20.0000' / 1"	CHECKED -	REVISED -	REVISED -		SCALE: N/A	SHEET NO. 9 OF 17 SHEETS	STA.	CONTRACT NO. 74343		ILLINOIS FED. AID PROJECT	
PLOT DATE = 9/28/2009	DATE -	REVISED -	REVISED -		TO STA.						