

F.A.P. RTE.	SECTION	COUNTY	TOTAL SHEETS	SHEET NO.
312	73BR-11	RANDOLPH	5/	1
FED. ROAD DIST. NO. 8		ILLINOIS	CONTRACT NO. 76883	

STATE OF ILLINOIS
DEPARTMENT OF TRANSPORTATION

DIVISION OF HIGHWAYS

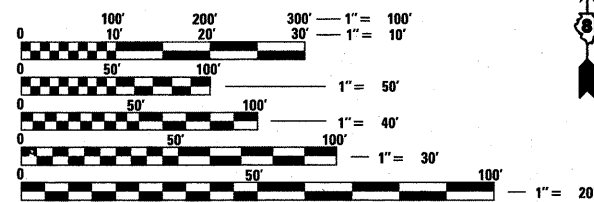
**PROPOSED
HIGHWAY PLANS**

FAP ROUTE 312 (IL 3)
SECTION 73BR-11
PROJECT: F-0312 (035)
RANDOLPH COUNTY

**MICROSILICA OVERLAY AND DECK REPAIRS W/
SEISMIC RETROFITTING AND NAVIGATIONAL
LIGHTING SYSTEM REPLACEMENT**

C-98-039-05

FOR INDEX OF SHEETS, SEE SHEET NO. 2

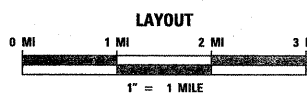
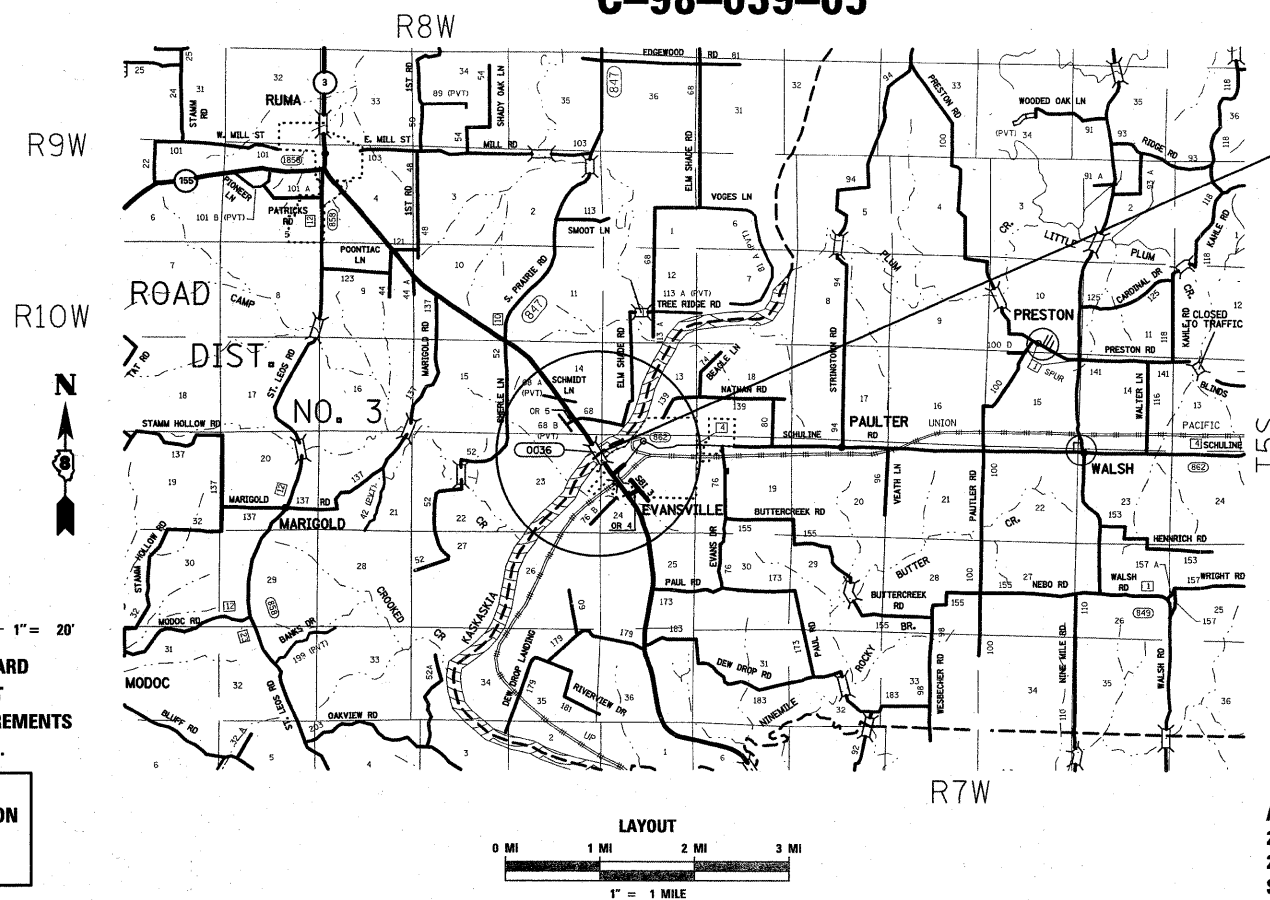


FULL SIZE PLANS HAVE BEEN PREPARED USING STANDARD ENGINEERING SCALES. REDUCED SIZED PLANS WILL NOT CONFORM TO STANDARD SCALES. IN MAKING MEASUREMENTS ON REDUCED PLANS, THE ABOVE SCALES MAY BE USED.

J.U.L.I.E.
JOINT UTILITY LOCATION INFORMATION FOR EXCAVATION
1-800-892-0123
OR 811

PROJECT ENGINEER: PATTI LEBEAU (618) 346-3179
SQUAD CONTACT: ART MUEHLFELD (618) 346-3209

CONTRACT NO. 76883



LAYOUT
LATITUDE = 38.089908
LONGITUDE = 89.944828

PROJECT LOCATION -
STA. 789+11.83 TO STA. 798+81.75
7 SPAN COMPOSITE STEEL PLATE BEAMS
CONSISTING OF STEEL PLATE GIRDERS
W/SHOP SPICED FLANGE THICKNESS
TRANSITIONS. CARRIES IL ROUTE 3 OVER
KASKASKIA RIVER ON WALL PIERS W/PILE
FOOTING AND NON-INTEGRAL PILE BENT
ABUTMENTS. SPANS - 1 @ 83'-11 1/2", 1 @
85'-1 1/2", 2 @ 181'-2", 1 @ 231'-0", 1 @
101'-11", AND 1 @ 100'-9"
SPAN 4 - STA. 793+80

ADT -
2009 = 4000 (ESTIMATED)
2029 = 5100 (ESTIMATED)
SU = 5.3% MU = 5.9%

GROSS LENGTH = 969.92 FT. = .18 MILE
NET LENGTH = 969.92 FT. = .18 MILE



LOCATION OF SECTION INDICATED THUS: - [Symbol] -

STATE OF ILLINOIS
DEPARTMENT OF TRANSPORTATION
DIVISION OF HIGHWAYS

SUBMITTED January 28, 2010

Mary C. James
DEPUTY DIRECTOR OF HIGHWAYS, REGION 5 ENGINEER

March 19, 2010
Scott E. Stitt, P.E./RD
Acting ENGINEER OF DESIGN AND ENVIRONMENT

March 19, 2010
Christine M. Reed/RD
DIRECTOR OF HIGHWAYS, CHIEF ENGINEER

**PRINTED BY THE AUTHORITY
OF THE STATE OF ILLINOIS**