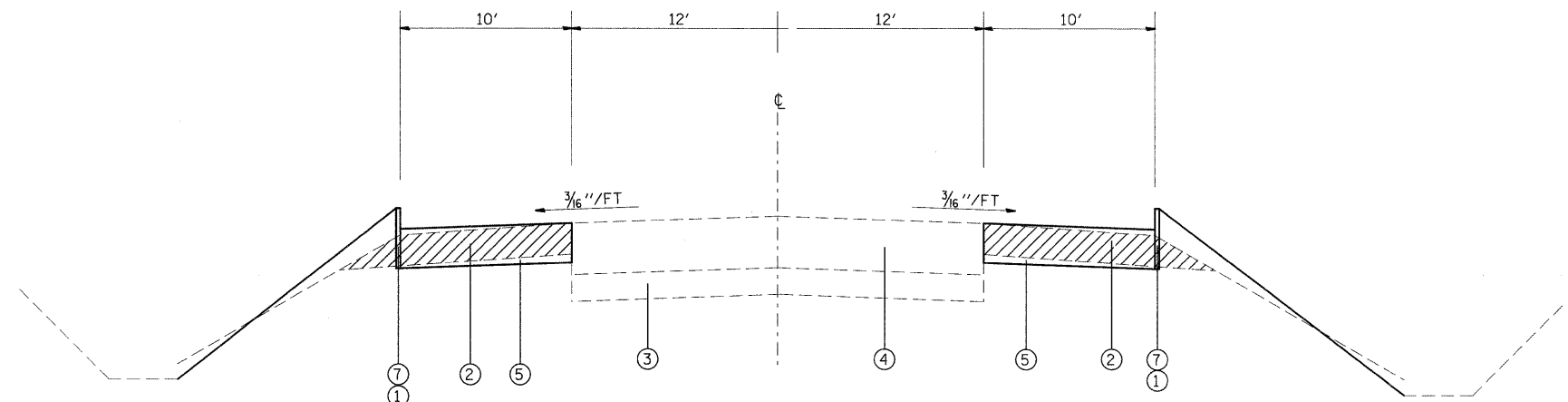


TYPICAL SECTION

STA. 786+90.00 TO 788+65.00

LEGEND

- ① EXISTING CONCRETE CURB
 - ② EXISTING HMA SHOULDER - 8"
 - ③ EXISTING SUBBASE - 4"
 - ④ EXISTING PCC PAVEMENT - 8"
 - ⑤ PROPOSED HMA BASE COURSE - 10"
 - ⑥ PROPOSED COMBINATION CONCRETE CURB AND GUTTER, TY B6.24*
 - ⑦ PROPOSED CONCRETE CURB, TY B (DOWELLED)
- *PROPOSED COMBINATION CONCRETE CURB & GUTTER TYPE B6.24 BEGINS AT STA. 785+89.20
- ▨ PROPOSED REMOVAL - HMA SHOULDER REMOVAL
CONCRETE CURB REMOVAL



TYPICAL SECTION

STA. 799+27.30 TO STA. 801+34.00

FILE NAME =	USER NAME = manntm	DESIGNED -	REVISED -
ct:\pw_work\p1dot\manntm\dms52245\p1n2005a.dgn		DRAWN -	REVISED -
PLOT SCALE = 50.0000' / IN.		CHECKED -	REVISED -
PLOT DATE = 2/17/2010		DATE -	REVISED -

**STATE OF ILLINOIS
DEPARTMENT OF TRANSPORTATION**

TYPICAL SECTIONS

SCALE: SHEET NO. 1 OF 1 SHEETS STA. TO STA.

F.A.P. RTE.	SECTION	COUNTY	TOTAL SHEETS	SHEET NO.
312	73BR-11	RANDOLPH	51	5
CONTRACT NO. 76883				
FED. ROAD DIST. NO. 8 ILLINOIS FED. AID PROJECT				