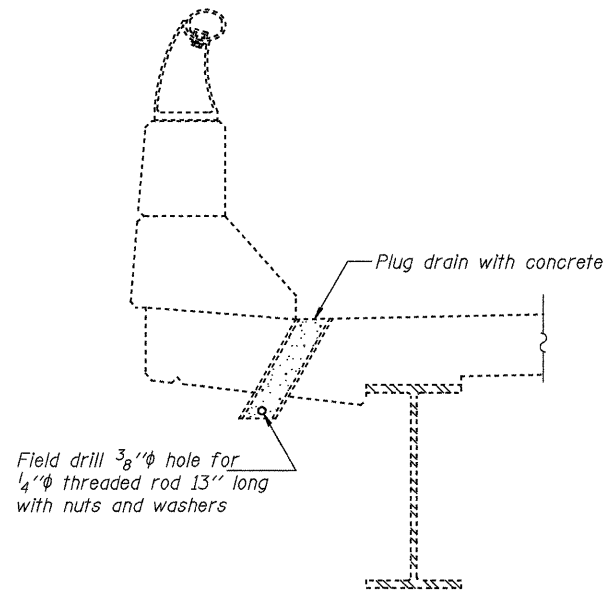
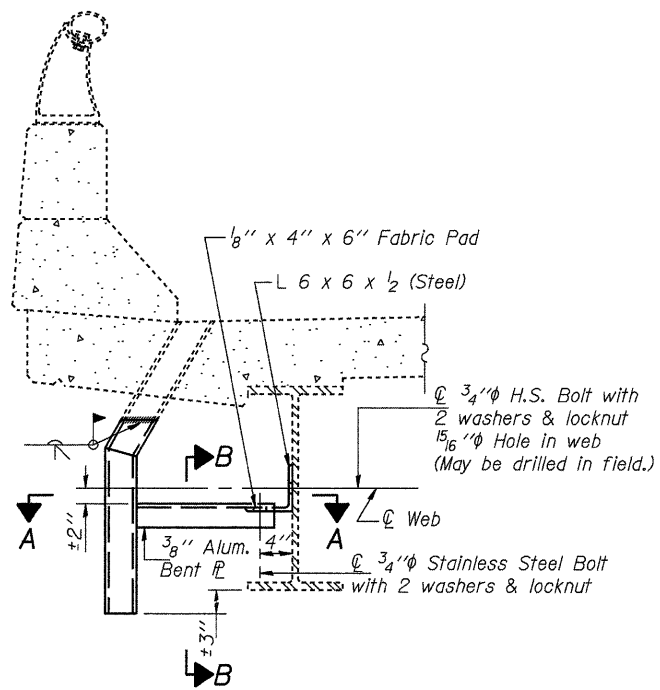


STATE OF ILLINOIS
DEPARTMENT OF TRANSPORTATION

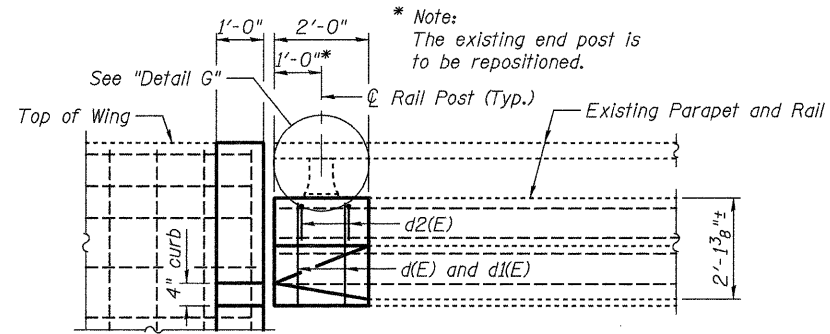
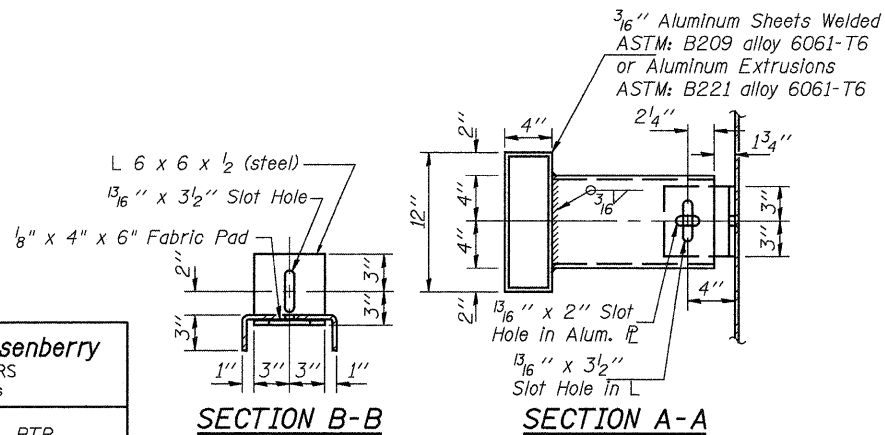


Field drill $\frac{3}{8}$ " ϕ hole for $\frac{1}{4}$ " ϕ threaded rod 13" long with nuts and washers

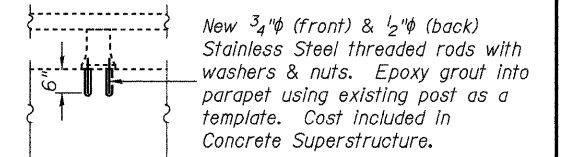
SECTION AT DRAIN PLUG



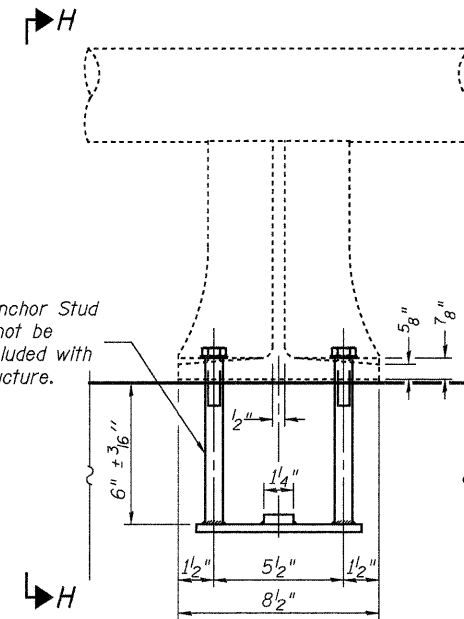
SECTION AT DRAIN EXTENSION



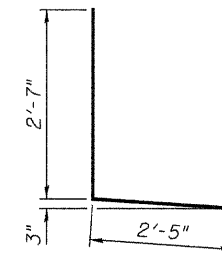
SECTION C-C
PARTIAL INSIDE ELEVATION OF PARAPET



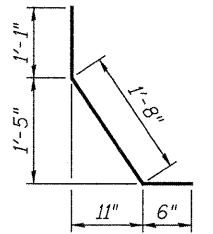
RAIL POST REPAIR
(See Deck Repair sheet for location)



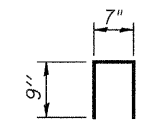
DETAIL G



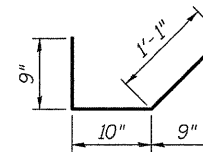
BAR d(E)



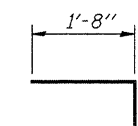
BAR d1(E)



BAR d2(E)



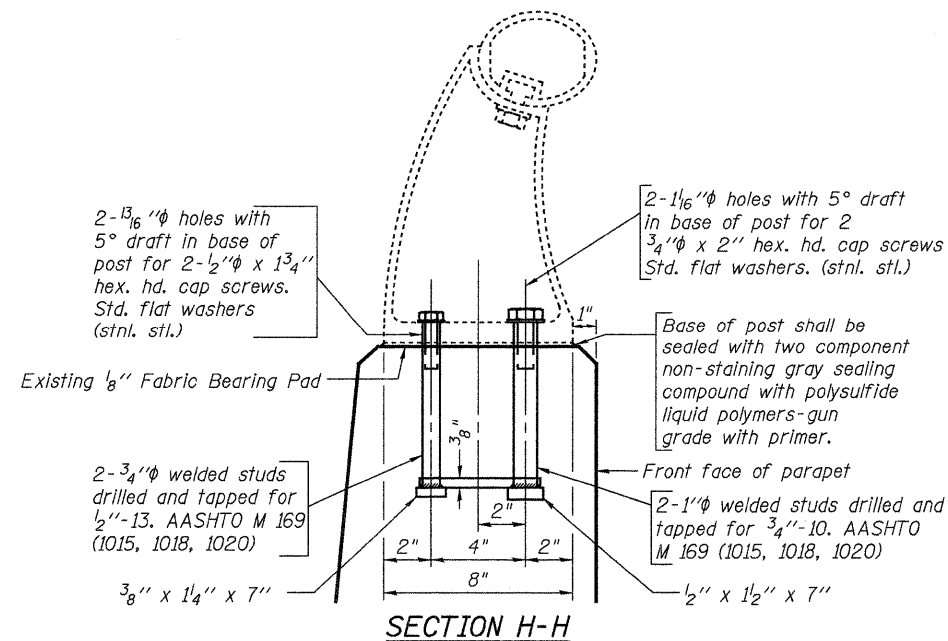
BAR x(E)



BAR x1(E)

SUPERSTRUCTURE
BILL OF MATERIAL

Bar	No.	Size	Length	Shape
a1(E)	16	#6	23'-0"	—
a11(E)	16	#6	22'-0"	—
a2(E)	8	#6	5'-0"	—
a3(E)	16	#5	9'-2"	—
d(E)	8	#4	5'-0"	L
d1(E)	8	#5	3'-3"	—
d2(E)	8	#4	2'-1"	—
h(E)	8	#6	23'-3"	—
h1(E)	8	#6	22'-3"	—
x(E)	72	#5	2'-8"	—
x1(E)	72	#5	2'-2"	—
v(E)	88	#5	1'-9"	—
Reinforcement Bars, Epoxy Coated			Pound	2430
Concrete Superstructure			Cu. Yd.	14.4
Plug Existing Deck Drains			Each	302
Floor Drain Extension			Each	12
Concrete Removal			Cu. Yd.	13.4



SUPERSTRUCTURE DETAILS
STRUCTURE NO. 079-0036

SHEET 5 OF 22	F.A.P. RTE.	SECTION	COUNTY	TOTAL SHEETS	SHEET NO.
	312	73BR-11	RANDOLPH	51	28
STA. 793+80			CONTRACT NO. 76883		
FED. ROAD DIST. NO.		ILLINOIS FED. AID PROJECT			

JD Johnson, Depp & Quisenberry
CONSULTING ENGINEERS
Springfield, Illinois

DESIGNED: JDQ	DRAWN: PTR
CHECKED: DCD	CHECKED: DCD

FILE: J:\JDD\010175 IL-D8VV#4 IL 3 Kaskaskia River-FINAL\0790036-76883-005-super-str3.dgn
USER: DCD
DATE: 02/15/2010 11:36:11