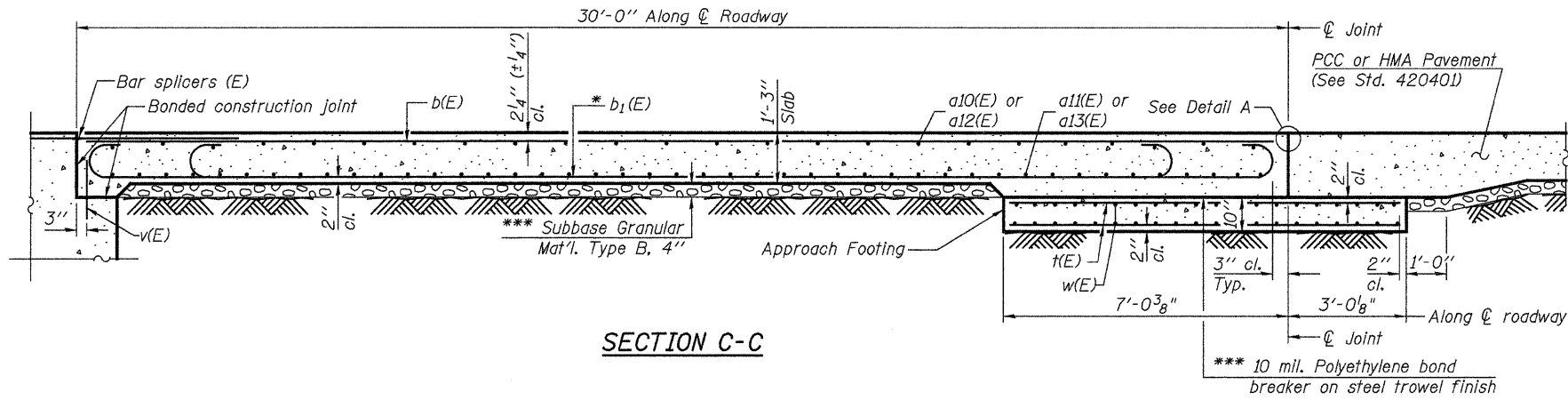


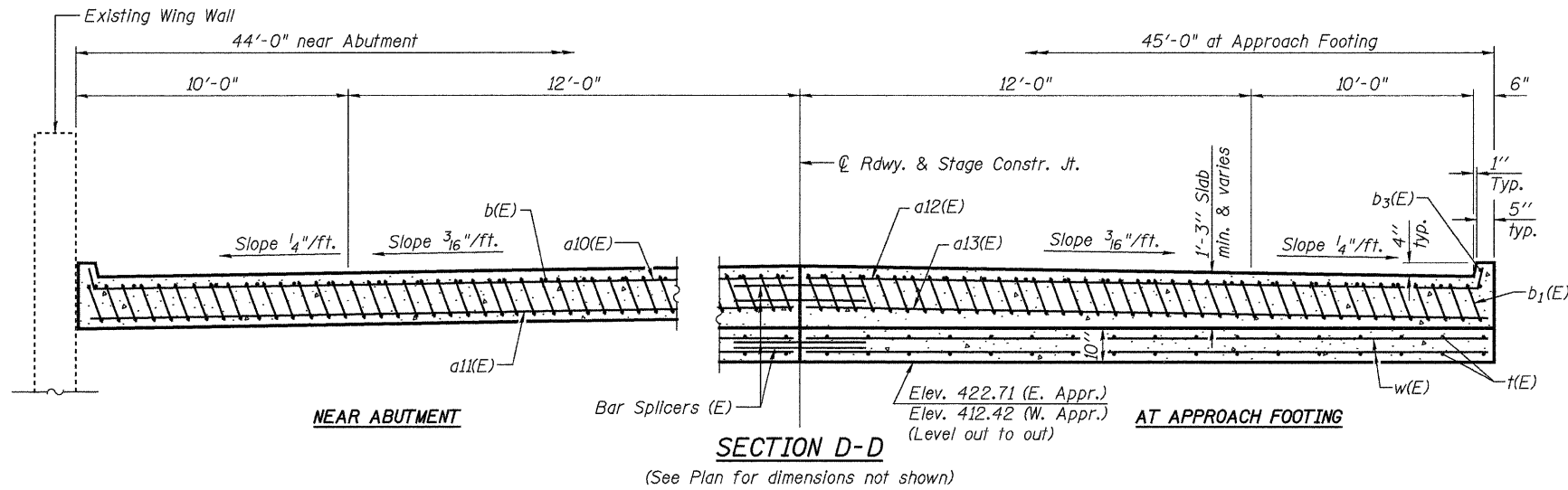
STATE OF ILLINOIS
DEPARTMENT OF TRANSPORTATION

Notes:

See sheet 6 of 22 for Detail A and View B-B.
Approach slab and parapet concrete shall be paid for as Concrete Superstructure.
Approach footing concrete shall be paid for as Concrete Structures.
Reinforcement shall be paid for as Reinforcement Bars, Epoxy Coated.
For v(E) bar details, see sheet 4 of 22.
The approach footing maximum applied service bearing pressure (Qmax) = 2.0 ksf.
For bar splicer details, see sheet 19 of 22.
Cost of excavation for approach footing included with Concrete Structures.



SECTION C-C

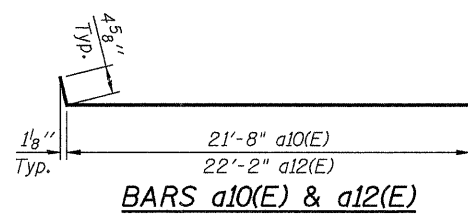


SECTION D-D

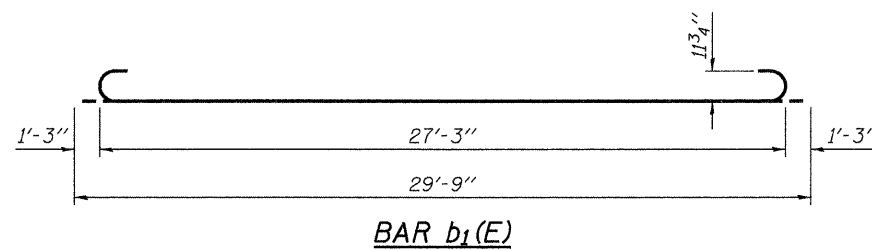
(See Plan for dimensions not shown)

* Tilt #9 b₁(E) bars as required to maintain clearance.

*** Cost included with Concrete Superstructure.



BARS a10(E) & a12(E)



BAR b₁(E)

TWO APPROACHES
BILL OF MATERIAL

Bar	No.	Size	Length	Shape
a10(E)	40	#4	22'-0"	U
a11(E)	76	#5	21'-9"	U
a12(E)	56	#4	22'-6"	U
a13(E)	104	#5	22'-3"	U
b(E)	88	#4	29'-8"	U
b1(E)	212	#9	29'-9"	C
b3(E)	4	#4	17'-2"	U
t(E)	176	#4	9'-8"	U
w(E)	160	#5	22'-3"	U
Concrete Superstructure		Cu. Yd.	129.1	
Concrete Structures		Cu. Yd.	27.9	
Reinforcement Bars, Epoxy Coated		Pound	33650	

JD Johnson, Depp & Quisenberry
CONSULTING ENGINEERS
Springfield, Illinois

DESIGNED: JDQ DRAWN: SJS
CHECKED: DCD CHECKED: DCD

BA-R 10-31-08 (Modified)

(Sheet 2 of 2)
BRIDGE APPROACH SLAB DETAILS
STRUCTURE NO. 079-0036

SHEET 7 OF 22	F.A.P. RTE.	SECTION	COUNTY	TOTAL SHEETS	SHEET NO.
	312	73BR-11	RANDOLPH	51	30
STA. 793+80		CONTRACT NO. 76883			
FED. ROAD DIST. NO.		ILLINOIS FED. AID PROJECT			