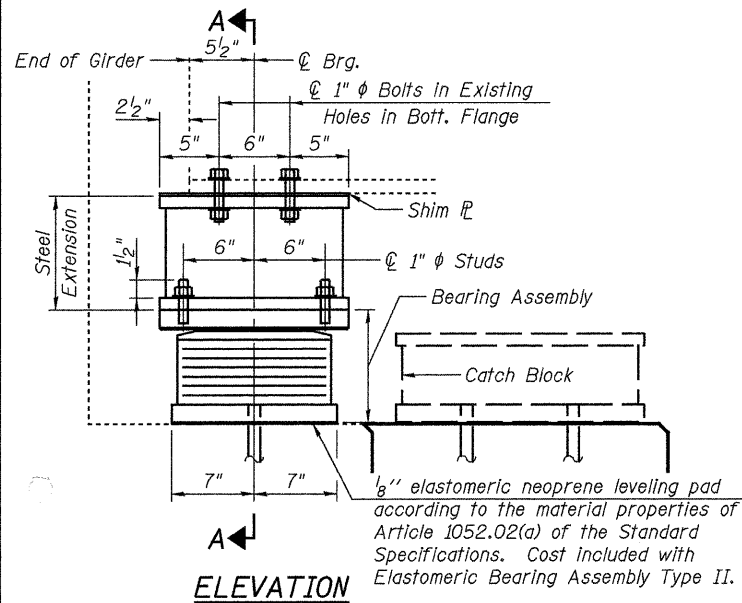
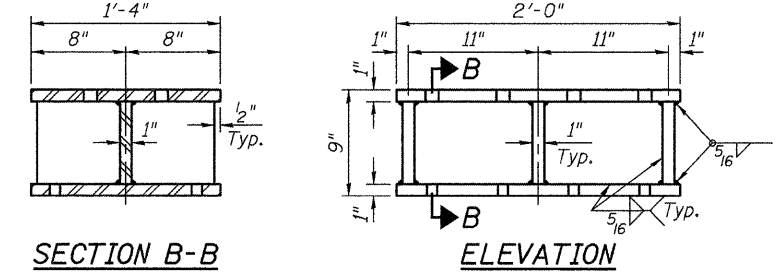
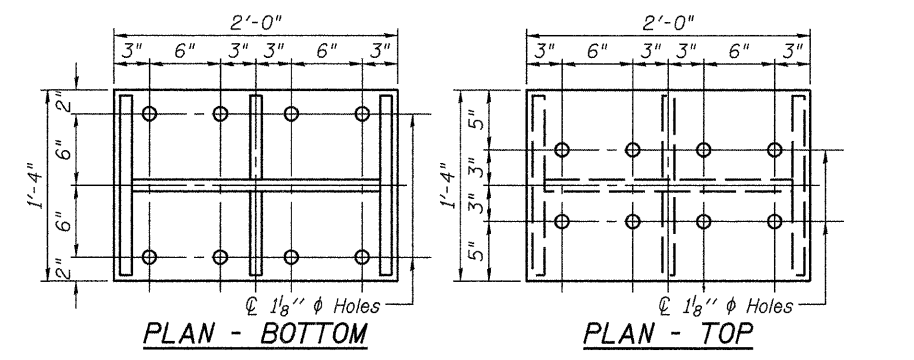
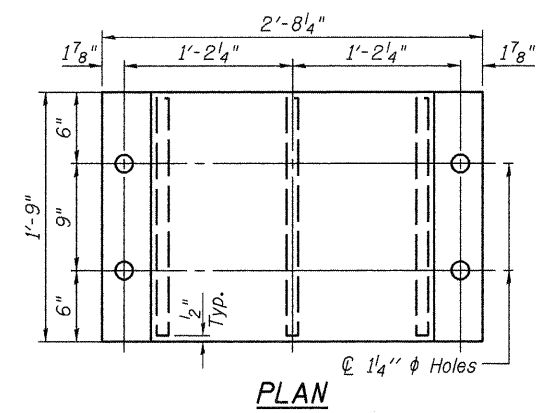
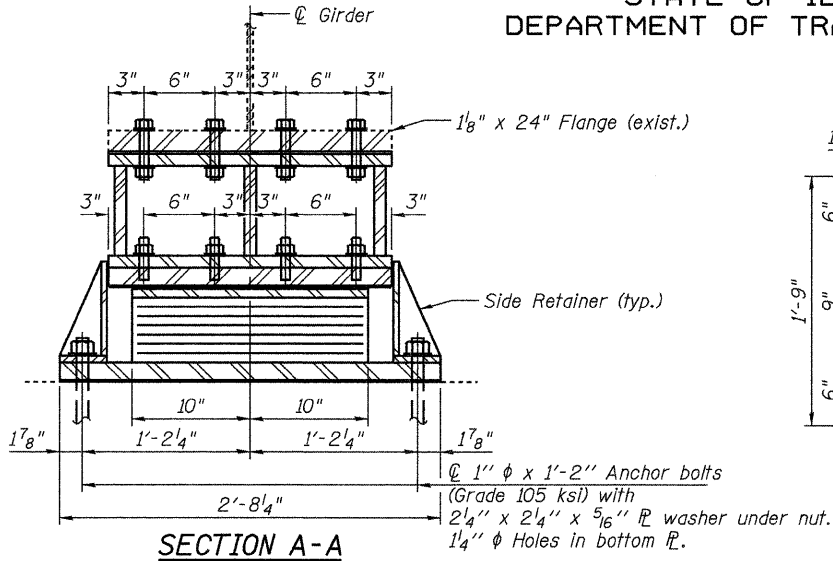


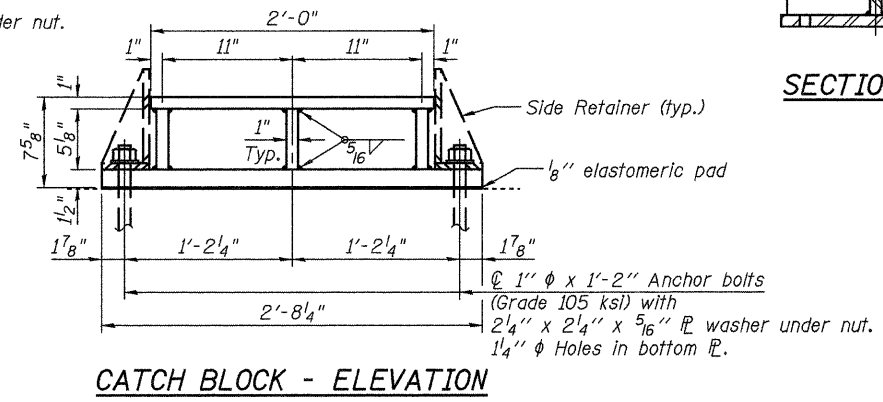
STATE OF ILLINOIS
DEPARTMENT OF TRANSPORTATION



TYPE II ELASTOMERIC EXP. BRG.



STEEL EXTENSION

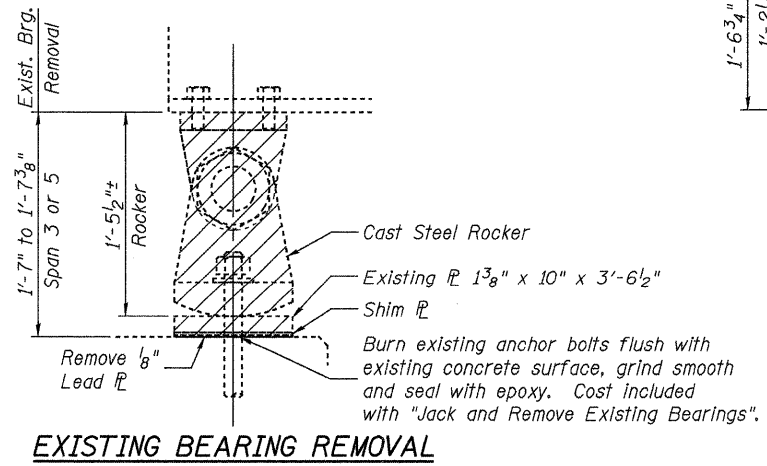
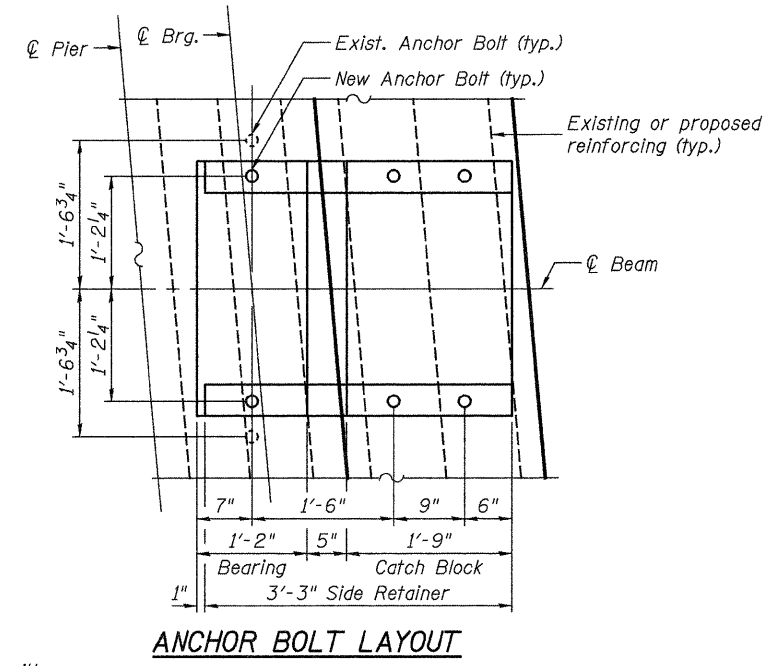
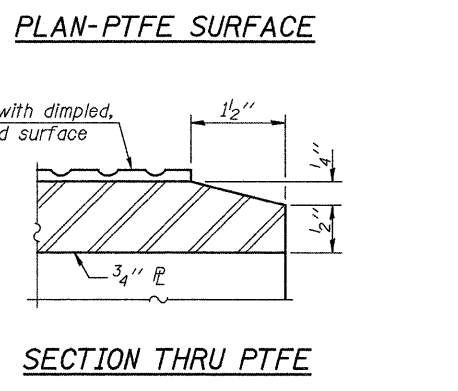
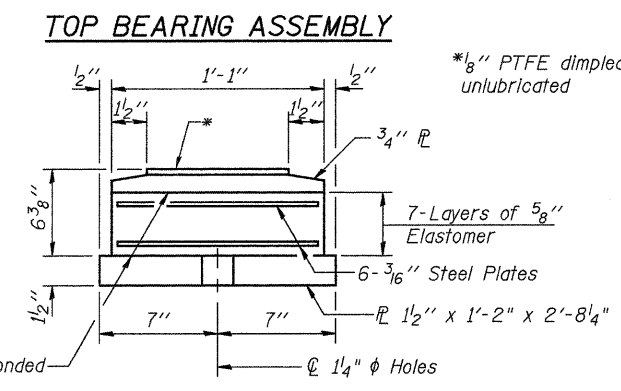
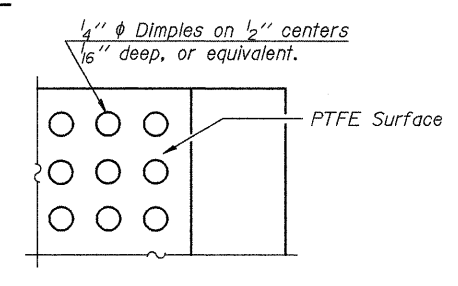
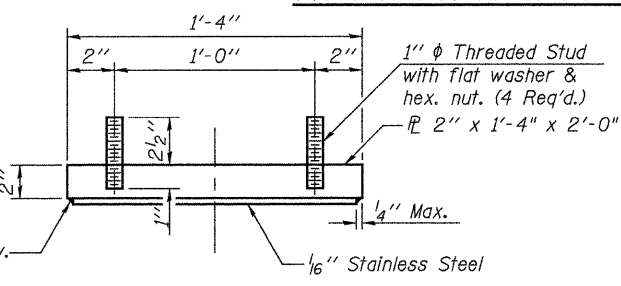


Notes:
Anchor bolts shall be ASTM F1554 all-thread (or an Engineer-approved alternate material) of the grade(s) and diameter(s) specified. ASTM A307 Grade C anchor bolts may be used in lieu of ASTM F1554 Grade 36 (Fy=36ksi). The corresponding specified grade of AASHTO M314 anchor bolts may be used in lieu of ASTM F1554.
Anchor bolts for Type II bearings shall be placed in holes drilled in the concrete through holes in the bottom bearing plate after members are in place. Side retainers shall be placed after bolts are installed.
Drilled and set anchor bolts shall be installed according to Article 521.06 of the Standard Specifications.
Side retainers and other steel members required for the bearing assembly shall be included in the cost of Elastomeric Bearing Assembly, Type II.
The 1/8" PTFE sheet shall be bonded directly to the top steel plate with a two-component, medium viscosity epoxy resin, conforming to the requirements of the Federal Specification MMM-A-134, Type I. The bond agent shall be applied on the full area of the contact surfaces.
Bonding of 1/8" PTFE sheet during vulcanizing process will be permitted provided the process and method of adjusting assembly height is approved by the Engineer.

See Additional Notes on Sheet 10 of 22.

BILL OF MATERIAL

Item	Unit	Pier 2	Pier 5
Jack and Remove Existing Bearings	Each	5	5
Elastomeric Bearing Assembly Type II	Each	5	5
Furnishing and Erecting Structural Steel	Pound	4390	4390
Anchor Bolts, 1"	Each	30	30



SHIM THICKNESS TABLE

Location	Girder 1	Girder 2	Girder 3	Girder 4	Girder 5
Pier 2-Span 3	-	-	-	1/4"	3/8"
Pier 5-Span 5	-	-	-	1/4"	3/8"

INTERIOR GIRDER REACTION TABLE

	Pier 2	Pier 5
R (DL)	(K) 117.1	117.1
R (LL)	(K) 67.5	67.5
R (Imp)	(K) 10.8	10.8
R (Total)	(K) 195.4	195.4
Minimum Jack Capacity (Tons)	120	120

**BEARINGS
PIER 2-SPAN 3 & PIER 5-SPAN 5
STRUCTURE NO. 079-0036**

SHEET 12 OF 22	F.A.P. RTE. 312	SECTION 73BR-11	COUNTY RANDOLPH	TOTAL SHEETS 51	SHEET NO. 35
	STA. 793+80			CONTRACT NO. 76883	
FED. ROAD DIST. NO. ILLINOIS FED. AID PROJECT					

Johnson, Depp & Quisenberry
CONSULTING ENGINEERS
Springfield, Illinois

DESIGNED: JDQ	DRAWN: PTR
CHECKED: DCD	CHECKED: DCD

Note:
Retainer for one side is shown, retainer for other side is similar by opposite hand.

FILE: J:\DDO\010175 IL-D8VVV#4 IL 3 Kaskaskia River-FINAL\0790036-76883-012-Bearings3.dgn
USER: DCD
DATE: 02/15/2010 11:36:32