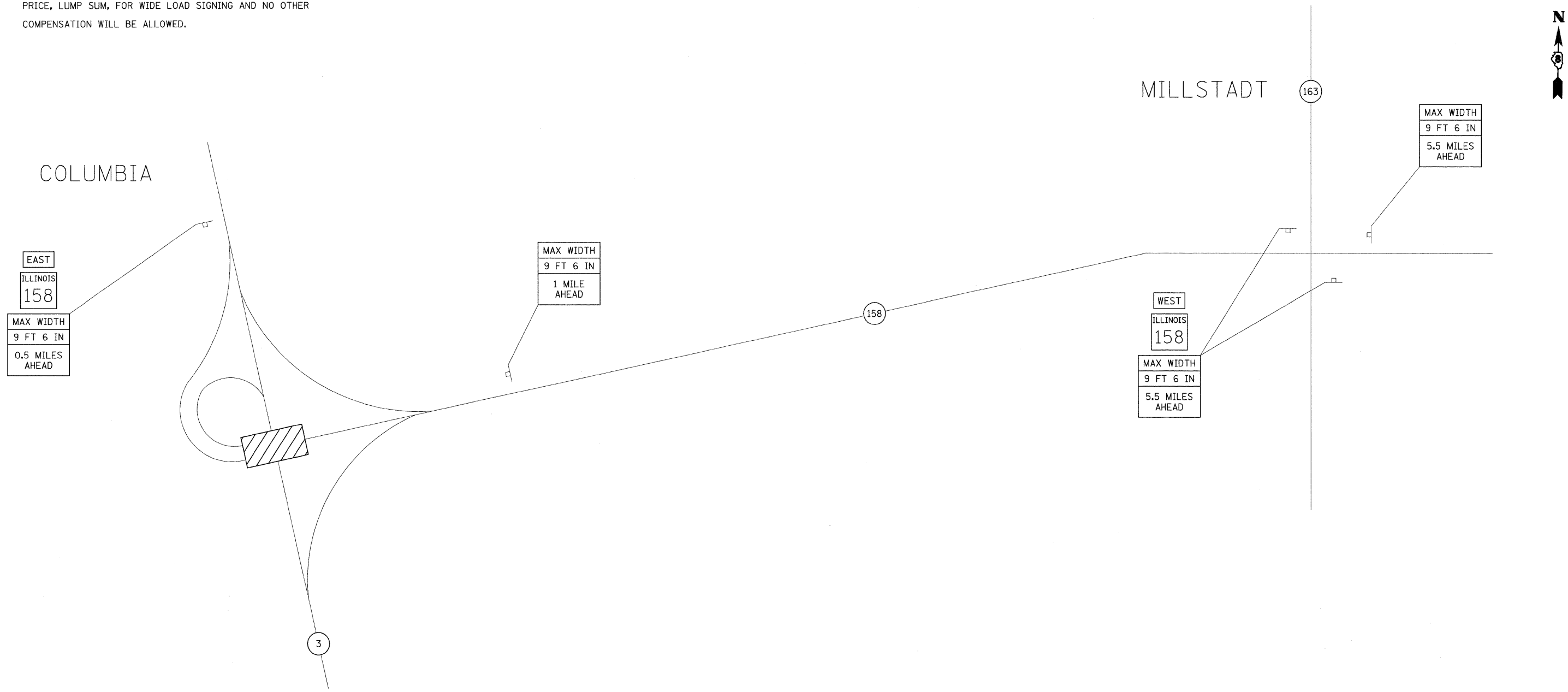


**NOTES**

- ① ALL SIGNS REQUIRED WILL BE SUPPLIED TO THE CONTRACTOR BY I.D.O.T.
- ② THE CONTRACTOR SHALL FURNISH THE POSTS AND ERECT SIGNS AT THE LOCATIONS SHOWN ON THIS SHEET, AS DIRECTED BY THE R.E./R.T. THE POSTS SHALL REMAIN THE PROPERTY OF THE CONTRACTOR.
- ③ THE CONTRACTOR SHALL GIVE ILLINOIS DEPARTMENT OF TRANSPORTATION, BUREAU OF OPERATIONS TWO WEEKS NOTICE FOR SIGNS. THE CONTRACTOR SHALL PICK UP THE SIGNS AT THE T.M. BUILDING IN FAIRVIEW HEIGHTS, AND RETURN THEM UPON COMPLETION OF THE CONTRACT. CONTACT JEAN SLAPE (618) 346-3289.
- ④ SIGN SPACING WILL BE 400' OR TO FIT FIELD CONDITIONS.
- ⑤ THE HEIGHT TO THE BOTTOM OF THE LOWEST SIGN SHALL BE NOT LESS THAN 6'.
- ⑥ THE ABOVE NOTED WORK SHALL BE PAID FOR AT THE CONTRACT UNIT PRICE, LUMP SUM, FOR WIDE LOAD SIGNING AND NO OTHER COMPENSATION WILL BE ALLOWED.

**SIGNS REQUIRED**

ILLINOIS 158 (3)	EAST (1)	WEST (2)
MAX WIDTH 9 FT 6 IN 0.5 MILES AHEAD (1)	MAX WIDTH 9 FT 6 IN 1 MILE AHEAD (1)	MAX WIDTH 9 FT 6 IN 5.5 MILES AHEAD (3)



NOT TO SCALE

FILE NAME =	USER NAME = owenbj	DESIGNED -	REVISED -	<b>STATE OF ILLINOIS DEPARTMENT OF TRANSPORTATION</b>	<b>WIDE LOAD SIGNING PLAN</b>			F.A.P. RTE.	SECTION	COUNTY	TOTAL SHEETS	SHEET NO.
ct:\pwork\pwork\owenbj\dms52558\pin00808a.dgn	DRAWN -	REVISED -	809					67-IHBR	MONROE	144	27	
PLOT SCALE = 50.0000' / IN.	CHECKED -	REVISED -	CONTRACT NO. 76977									
PLOT DATE = 12/18/2009	DATE -	REVISED -	FED. ROAD DIST. NO. ILLINOIS FED. AID PROJECT									
				SCALE:	SHEET NO. OF SHEETS	STA.	TO STA.					