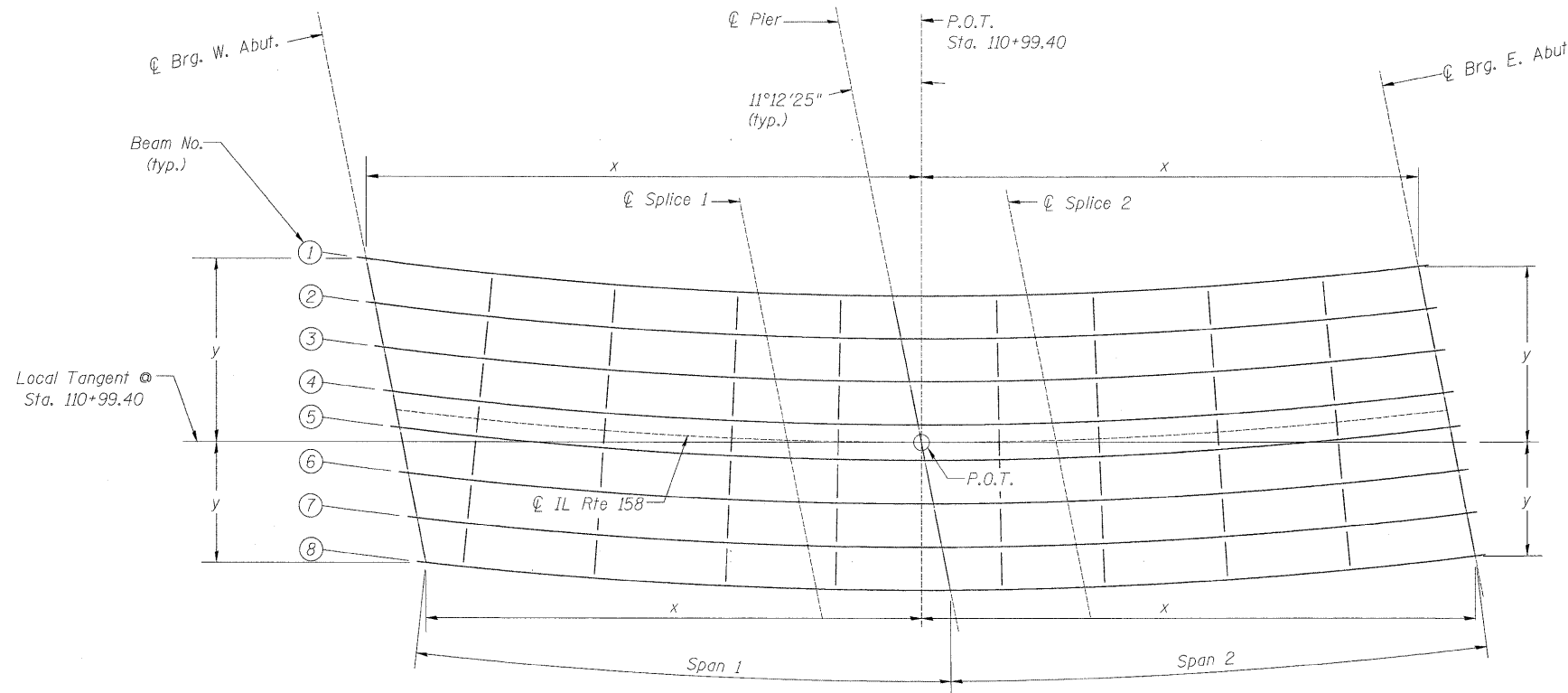


STATE OF ILLINOIS
DEPARTMENT OF TRANSPORTATION



FRAMING PLAN

Note:
Diaphragms radial except at abutments and Pier
P.O.T - Point of Tangency

TOP OF WEB ELEVATIONS (in feet) FOR FABRICATION ONLY					
Location Beam No.	CL Brg. W. Abut.	CL Spl. 1	CL Pier	CL Spl. 2	CL Brg. E.. Abut.
1	605.07	605.16	605.17	605.05	604.55
2	605.69	605.76	605.76	605.65	605.14
3	606.30	606.35	606.36	606.24	605.74
4	606.91	606.95	606.95	606.83	606.33
5	606.91	606.95	606.95	606.82	606.33
6	607.53	607.54	607.54	607.42	606.92
7	608.14	608.14	608.15	608.02	607.51
8	608.75	608.74	608.74	608.61	608.11

GIRDER LAYOUT DIMENSIONS (in feet)										
Beam No.	CL Brg. W. Abut.		CL Spl. 1		CL Pier		CL Spl. 2		CL Brg. E. Abut.	
	x	y	x	y	x	y	x	y	x	y
1	91'-0 ¹ / ₁₆ "	31'-10 ³ / ₁₆ "	23'-5 ⁵ / ₈ "	25'-10 ¹ / ₂ "	5'-0 ¹ / ₁₆ "	25'-6 ³ / ₁₆ "	13'-4 ⁵ / ₁₆ "	25'-7 ⁷ / ₁₆ "	86'-9 ¹ / ₁₆ "	30'-7 ⁷ / ₁₆ "
2	95'-5 ⁵ / ₈ "	24'-1 ³ / ₈ "	21'-11 ¹ / ₁₆ "	18'-3 ⁸ / ₈ "	3'-6 ¹ / ₁₆ "	18'-0 ⁸ / ₈ "	14'-10 ³ / ₁₆ "	18'-1 ³ / ₄ "	88'-3 ¹ / ₄ "	23'-2 ¹ / ₁₆ "
3	93'-11 ³ / ₁₆ "	16'-4 ⁹ / ₁₆ "	20'-5 ⁹ / ₁₆ "	10'-9 ³ / ₈ "	2'-1"	10'-6 ¹ / ₁₆ "	16'-4"	10'-8 ¹ / ₈ "	89'-8 ³ / ₄ "	15'-10 ³ / ₈ "
4	92'-4 ³ / ₄ "	8'-7 ⁵ / ₈ "	19'-0 ⁸ / ₈ "	3'-2 ¹ / ₈ "	0'-7 ¹ / ₈ "	3'-0"	17'-9 ¹ / ₈ "	3'-2 ¹ / ₂ "	91'-2 ⁵ / ₈ "	8'-5 ⁷ / ₈ "
CL IL Rte 158	91'-9 ¹ / ₁₆ "	5'-6 ¹ / ₁₆ "	18'-5"	0'-2 ¹ / ₁₆ "	0'-0"	0'-0"	18'-5"	0'-2 ¹ / ₁₆ "	91'-9 ⁵ / ₁₆ "	5'-6 ¹ / ₁₆ "
5	91'-2 ¹ / ₁₆ "	2'-5 ⁵ / ₁₆ "	17'-9 ⁷ / ₈ "	2'-9 ¹ / ₂ "	0'-7 ¹ / ₈ "	3'-0"	19'-0 ⁸ / ₈ "	2'-9 ³ / ₁₆ "	92'-4 ³ / ₈ "	2'-7"
6	89'-7 ⁵ / ₈ "	5'-3 ¹ / ₂ "	16'-4 ¹ / ₁₆ "	10'-3 ¹ / ₁₆ "	2'-0 ¹ / ₁₆ "	10'-5 ¹ / ₁₆ "	20'-5 ⁵ / ₁₆ "	10'-2 ³ / ₄ "	93'-9 ⁸ / ₈ "	4'-9 ¹ / ₂ "
7	88'-1 ⁵ / ₁₆ "	13'-0 ³ / ₁₆ "	14'-10 ³ / ₁₆ "	17'-10 ³ / ₁₆ "	3'-6 ³ / ₄ "	17'-11 ¹ / ₁₆ "	21'-11 ³ / ₄ "	17'-8 ⁵ / ₁₆ "	95'-3 ¹ / ₁₆ "	12'-2 ¹ / ₁₆ "
8	86'-6 ¹ / ₁₆ "	20'-8 ¹ / ₁₆ "	13'-4 ³ / ₈ "	25'-4 ⁵ / ₈ "	5'-0 ⁹ / ₁₆ "	25'-5 ¹ / ₁₆ "	23'-5 ⁹ / ₁₆ "	25'-1 ¹ / ₁₆ "	96'-8 ¹ / ₁₆ "	19'-6 ⁹ / ₁₆ "

DESIGNED - JPM
CHECKED - CCS
DRAWN - MD
CHECKED - JPM, CCS

9-28-09



GIRDER DETAILS I
STRUCTURE NO. 067-0042

SHEET NO. 14	F.A.P. RTE.	SECTION	COUNTY	TOTAL SHEETS	SHEET NO.
	34 SHEETS	809	67-1HBR	Monroe	144
CONTRACT NO. 76977					
FED. ROAD DIST. NO. 7 ILLINOIS FED. AID PROJECT					