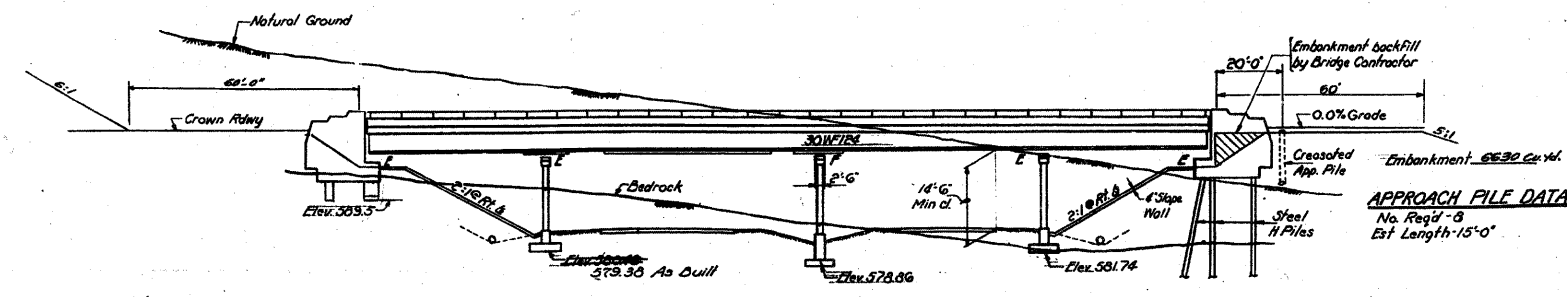


BM - 60d nail washer in twin 13" walnut trees 60' right tangent Sta. 273+75 Elev. 603.69 No Existing Structure

STATE OF ILLINOIS  
DEPARTMENT OF PUBLIC WORKS & BUILDINGS  
DIVISION OF HIGHWAYS

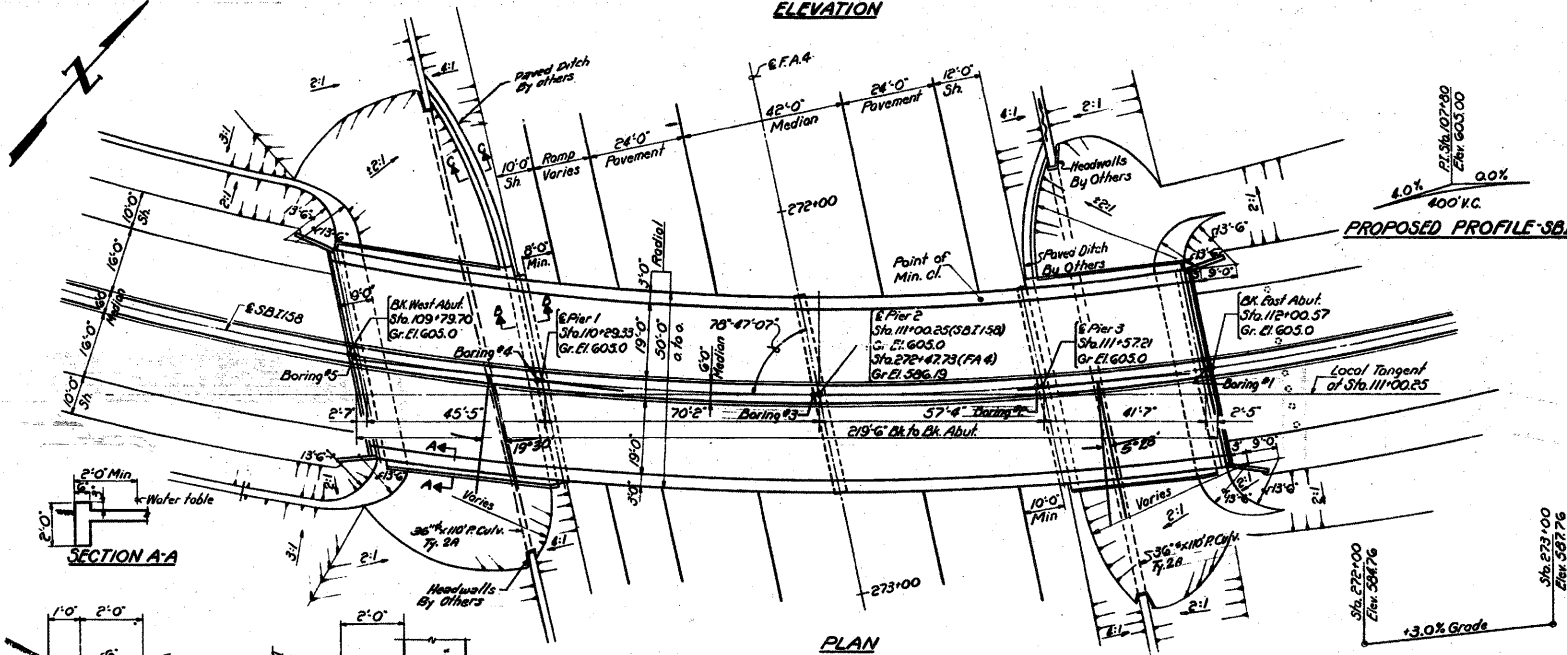
FA 4	67-1HB	MONROE	38	10	13 SHEETS
					SHEET NO. 1



ELEVATION

APPROACH PILE DATA  
No. Piles - 8  
Est Length - 15'-0"

**GENERAL NOTES**  
Coarse aggregate to be used in parapet handrails and end posts must be absolutely free of chert, flint, limonite, lignite and soft sandstone.  
The concrete floor slab shall be finished in accordance with Article 3119 of the Standard Specifications.  
Slope wall shall be reinforced with welded wire fabric 6"x6" mesh, weighing 50 lbs per 100 sq. ft.  
All reinforcement bars shall be lapped 20 diameters unless otherwise shown.  
All rivets & U.S. Bolts 3/4" Open Holes 1/8" unless otherwise noted. Anchor bolts shall be set before bolting diaphragms over supports. Diaphragms shall be rigidly connected before placement of slab.  
The exposed surfaces of the expansion guard shall be given two shop coats of red lead paint, the contact surfaces shall be given one coat of red lead paint. Anchor studs shall not be painted.  
Expansion guards are included in the quantity of Structural Steel, Est. Wt. 2260 lbs.  
Except as otherwise provided, all structural steel shall receive one shop coat of red lead paint and two field coats of aluminum paint. See Article 56.1 to 56.5 inclusive of the Standard Specifications.  
The contractor shall drive one steel test pile in a permanent location of East abutment as directed by the Engineer before ordering the remainder of piles.  
Steel H piles shall be driven to refusal.  
Permanent forms will not be permitted in forming the concrete floor.



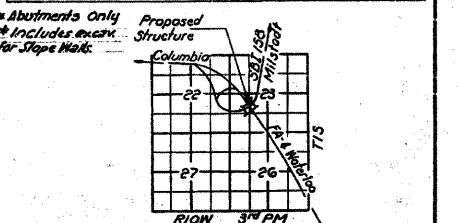
PLAN

PROPOSED PROFILE S.B.I. 158

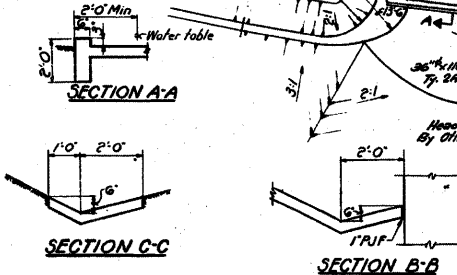
PROPOSED PROFILE FA 4

**TOTAL BILL OF MATERIAL**

Items	Units	Super	Substr.	Total
Rock Exc. for Structures	Cu. Yd.	135	223	358
Class A Exc. for Structures	Cu. Yd.	130	180	310
Class X Concrete	Cu. Yds.	332.6	667.4	1000
Structural Steel	Lbs.	302,200	261,0	563,200
Aluminum Handrail	Lin. Ft.	435	3,740	4,175
Reinforcement Bars	Lbs.	75,400	30,160	105,560
Creosoted Piles	Lin. Ft.		160	160
Steel Piles (A.P.P.36)	Lin. Ft.		160	160
Test Pile (Steel)	Each		1	1
Name Plates	Each		1	1
Pipe Culvert 14.24-36" P	Lin. Ft.		222	222
Slope Wall	Sq. Yds.		602	602
Protective Coat	Sq. Yds.	1380		1380
Bridge Joint Sealant	Lump Sum			



LOCATION SKETCH  
PROJ. F-47(17)  
GENERAL PLAN & ELEVATION  
S.B.I. 158 OVER  
FA 4 RELOCATED (ILL. RT. 3)  
SEC. 67-1HB  
MONROE COUNTY  
STA. 111+00.25



DESIGNED	J. W. Harkness	REVISIONS	None
CHECKED	B.C.	DATE	JULY 6 1924
DRAWN	W.E. Dickerson	APPROVED	U.E. [Signature]
CHECKED	B.C.		

HORIZONTAL CURVE DATA - S.B.I. 158

Δ = 67°  
D = 7°-30'  
T = 503.64  
L = 693.33  
P = 763.944  
E = 152.13  
PC = Sta. 105+06.00  
PT = Sta. 114+00.12  
SE = 0.0571% Super-elevation Attained  
Sta. 116+08.12 to Sta. 114+16.12

**DESIGN STRESSES**  
Pc = 1400 psi Superf. Sub.  
P = 20,000 psi Reinf.  
R = 20,000 psi Struct. (A-36)  
W = 75 psi / ft.  
n = 10  
Allowable Deflection = 1/1000  
LOADING H320-61

STATION 111+00.25  
BUILT 19% BY  
STATE OF ILLINOIS  
S.B.I. RT. 158 SEC. 67-1HB  
F.A. PROJ. F-47(17)  
LOADING H320

NAME PLATE  
Sta. 111+00.25

Rev. 6/12/26 J.J.N.  
Rev. 4-23-65 S.F.M. Changed quantities as shown in W. Abut. Footing  
Rev. 1-14-66 Added As Built Elevation for Pier 1. J.J.N.

FOR INFORMATION ONLY

FILE NAME =	USER NAME = owenbj	DESIGNED -	REVISED -	STATE OF ILLINOIS DEPARTMENT OF TRANSPORTATION	EXISTING STRUCTURE PLAN	F.A.P. RTE.	SECTION	COUNTY	TOTAL SHEETS	SHEET NO.	
es:\pw-work\p1dot\owenbj\dms52558\p1n0026a.dgn		DRAWN -	REVISED -			809	67-1HBR	MONROE	44	99	
PLOT SCALE = 50.0000' / IN.		CHECKED -	REVISED -	SCALE:	SHEET NO. OF SHEETS STA. TO STA.	FED. ROAD DIST. NO.	ILLINOIS FED. AID PROJECT	CONTRACT NO. 76977			
PLOT DATE = 11/5/2009		DATE	REVISED -								