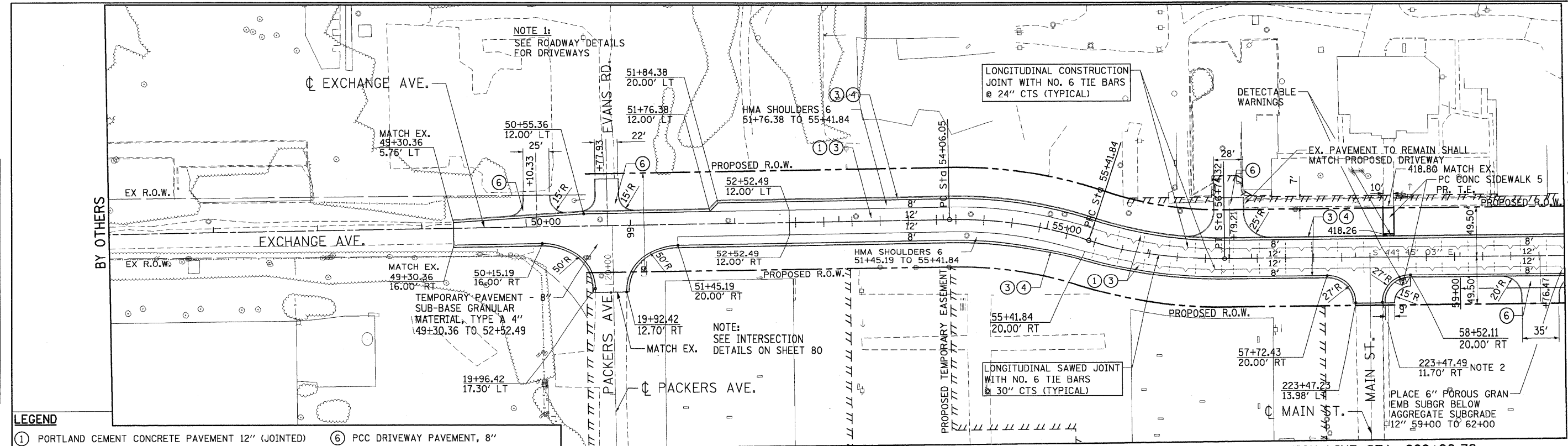
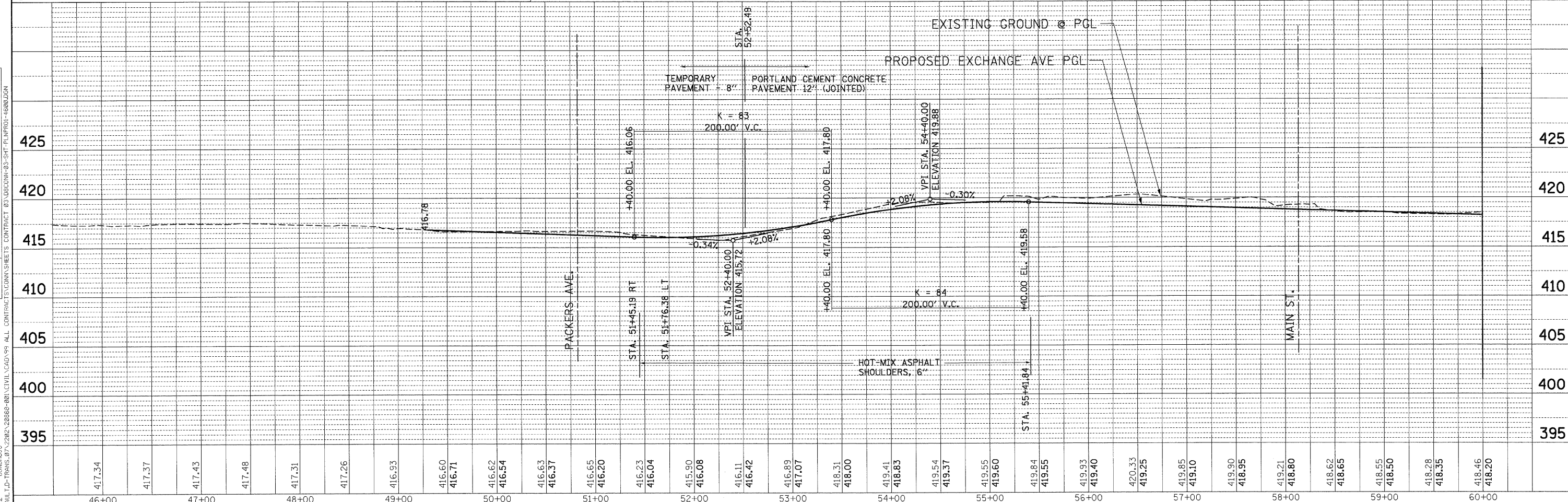


PLAN	DATE
SURVEYED	BY
NOTED	
ALIGNED	
CHECKED	
PAID	
FILE	
NO.	

PROFILE	DATE
SURVEYED	BY
NOTED	
GRADES	
CHECKED	
FILE	
NO.	



- LEGEND**
- ① PORTLAND CEMENT CONCRETE PAVEMENT 12" (JOINTED)
  - ② HOT-MIX ASPHALT SURFACE COURSE, MIX "C", N 50, 2"
  - ③ AGGREGATE SUBGRADE 12"
  - ④ COMBINATION CONCRETE CURB AND GUTTER, TYPE B-6.24
  - ⑤ HOT-MIX ASPHALT SHOULDERS, 8"
  - ⑥ PCC DRIVEWAY PAVEMENT, 8"
  - ⑦ AGGREGATE SHOULDERS, TYPE A, 6"
  - ⑧ CLASS B PATCHES
  - ⑨ AGGREGATE SURFACE COURSE, TYPE B, 8"
  - ⑩ CHAIN LINK FENCE, 6"



FILE NAME = #FILE#	USER NAME = #USER#	DESIGNED - JB	REVISED -	<b>STATE OF ILLINOIS DEPARTMENT OF TRANSPORTATION</b>	<b>PROPOSED ROADWAY PLAN &amp; PROFILE EXCHANGE AVENUE STA. 49+30.36 TO STA. 60+00.00</b>				F.A.P. RTE. 9153	SECTION 82-1K	COUNTY ST. CLAIR	TOTAL SHEETS 107	SHEET NO. 25
PLOT SCALE = #SCALE#	CHECKED - ACL	REVISOR -	REVISOR -		I-70 CONNECTION				CONTRACT NO. 76C40				
PLOT DATE = #DATE#	DATE - 10/09/09	REVISOR -	REVISOR -		SCALE: HORIZ. 1"=50' VERT. 1"=5'				ILLINOIS FED. AID PROJECT				
					STA. TO STA.				FED. ROAD DIST. NO.				

3-23-2010, 14:54:42 BONDHUIO \\F5-2044\NM\VAULT\TRANS\97\2282\28866-001\CIVIL\CAD\99 ALL CONTRACTS\CORNS\SHEETS CONTRACT 03\DCORNS-03-SHT-PLANPROJ-1600.DGN



TENGO & ASSOCIATES, INC.  
ENGINEERS/ARCHITECTS/PLANNERS  
CHICAGO, ILLINOIS