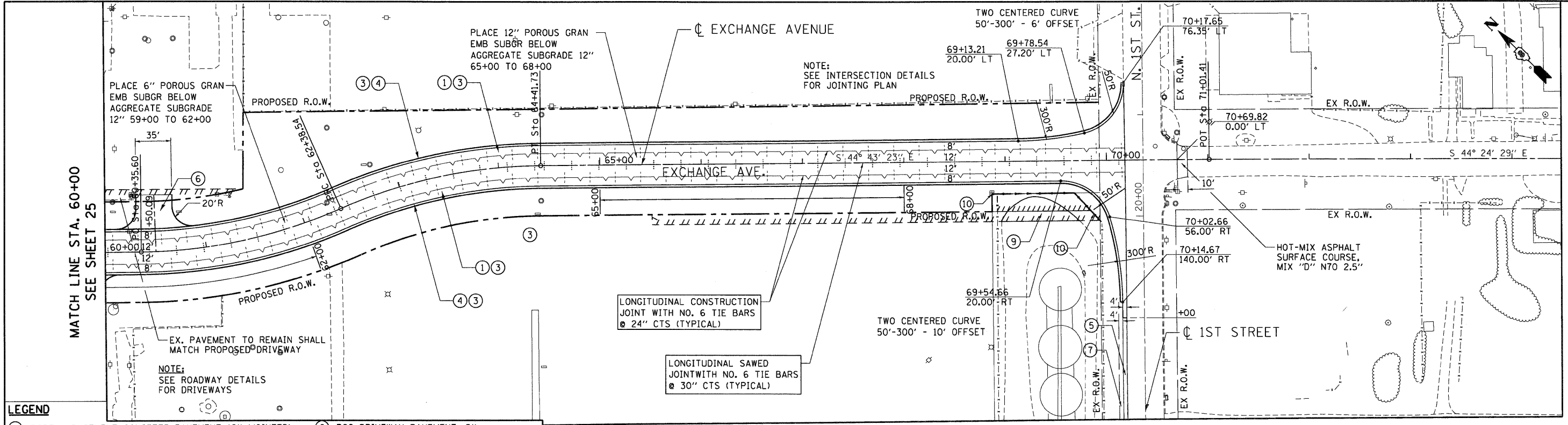


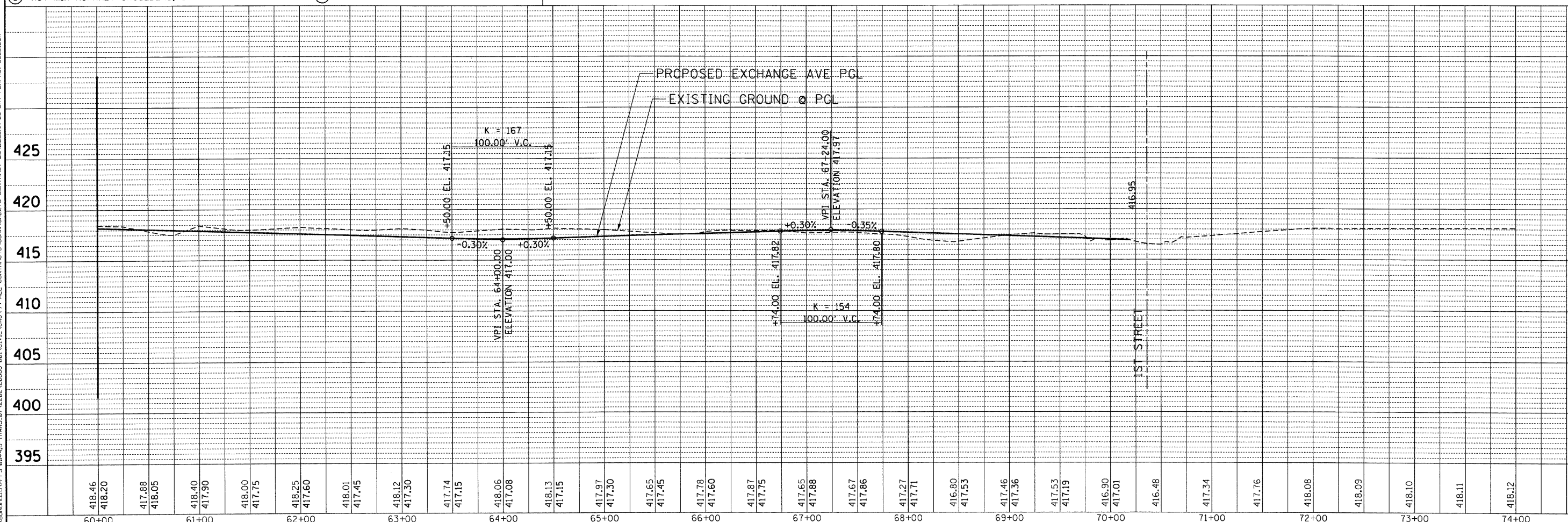
DATE	
BY	
PLAN	
NO.	
NO.	
NO.	
NO.	
NO.	

DATE	
BY	
PROF FILE	
NO.	
NO.	
NO.	
NO.	
NO.	

12-09-2009 10:00:24 BONDHLD  
 C:\T-CORSPACE\BONDHLD\WFS-0044.D-TRANS\_07\2202\28666-001\CIVIL\CAD\99 ALL CONTRACTS\CONTRACT SHEETS\CONTRACT 03\DRCONN-03-SH1-PLANPRO-60000.DGN



- LEGEND**
- ① PORTLAND CEMENT CONCRETE PAVEMENT 12" (JOINTED)
  - ② HOT-MIX ASPHALT SURFACE COURSE, MIX "C", N 50, 2"
  - ③ AGGREGATE SUBGRADE 12"
  - ④ COMBINATION CONCRETE CURB AND GUTTER, TYPE B-6.24
  - ⑤ HOT-MIX ASPHALT SHOULDERS, 8"
  - ⑥ PCC DRIVEWAY PAVEMENT, 8"
  - ⑦ AGGREGATE SHOULDERS, TYPE A, 6"
  - ⑧ CLASS B PATCHES
  - ⑨ AGGREGATE SURFACE COURSE, TYPE B, 8"
  - ⑩ CHAIN LINK FENCE, 6"



FILE NAME =	USER NAME = #USER#	DESIGNED - JB	REVISED -	<b>STATE OF ILLINOIS</b> <b>DEPARTMENT OF TRANSPORTATION</b> I-70 CONNECTION	<b>PROPOSED ROADWAY PLAN &amp; PROFILE</b> <b>EXCHANGE AVENUE</b> <b>STA. 60+00.00 TO 1ST STREET</b>	F.A.P. RTE.	SECTION	COUNTY	TOTAL SHEETS	SHEET NO.	
#FILEL#	PLOT SCALE = #SCALE#	DRAWN - JB	REVISED -			9153	82-1K	ST. CLAIR	107	26	
	PLOT DATE = #DATE#	CHECKED - ACL	REVISED -			CONTRACT NO. 76C40					
		DATE - 10/09/09	REVISED -			FED. ROAD DIST. NO. ILLINOIS FED. AID PROJECT					