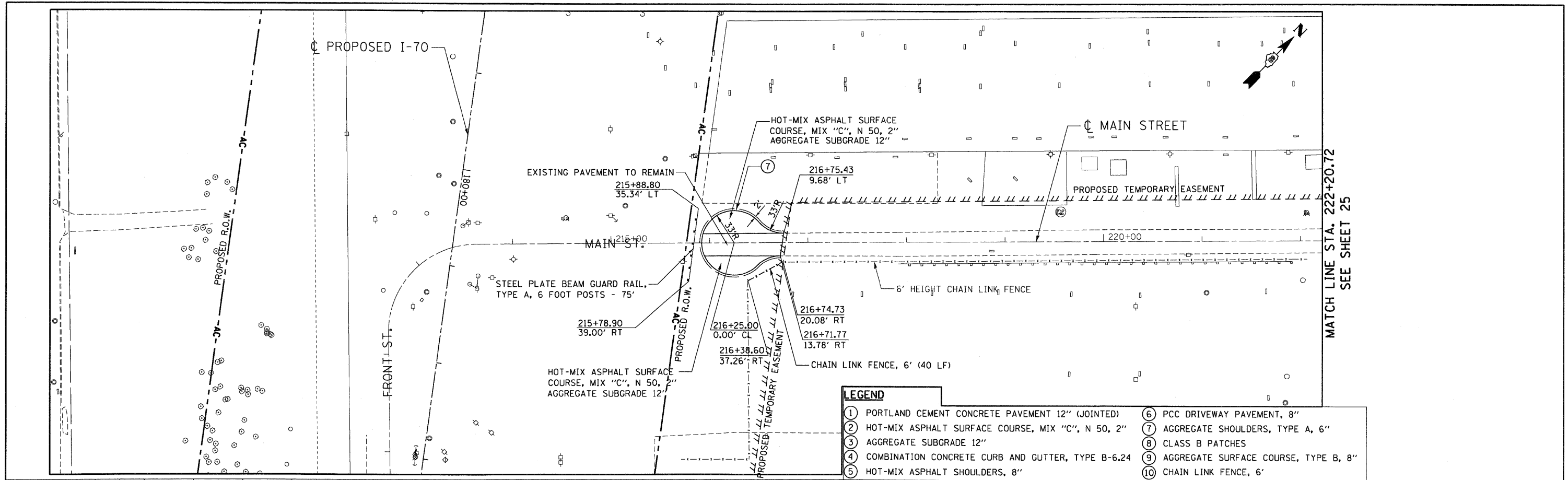


PLAN	SURVEYED	BY	DATE
	PLOTTED		
	NOTED		
	NO. OF WAY CHECKED		
	CADD FILE NAME		

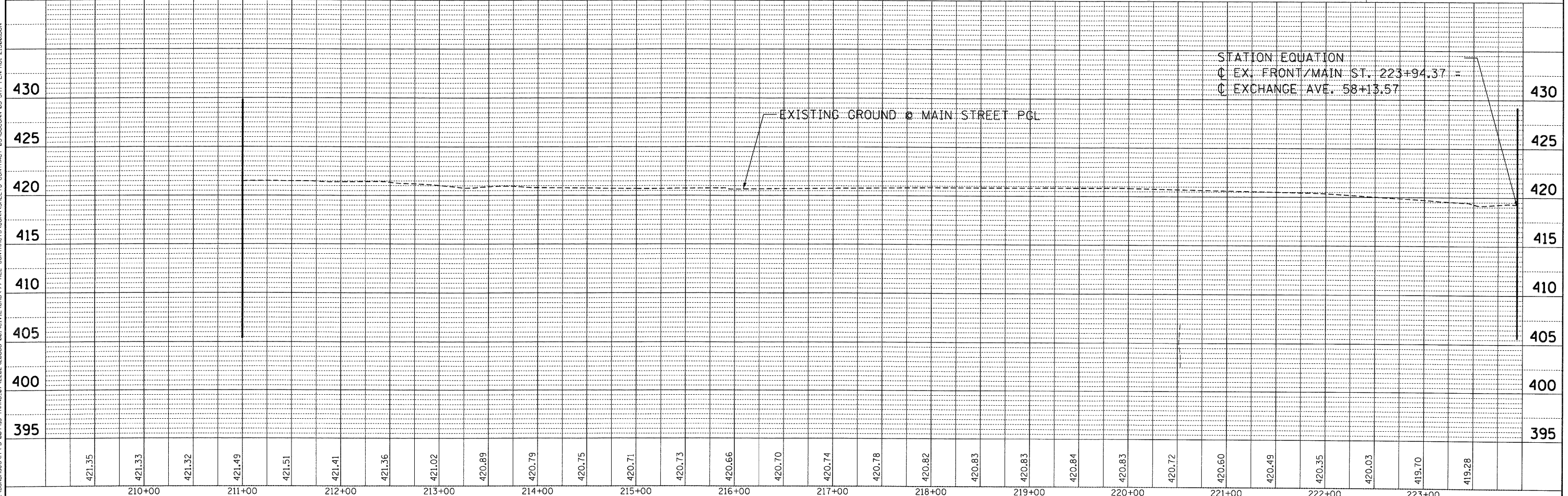
PROF ILE	SURVEYED	BY	DATE
	PLOTTED		
	NOTED		
	NO. OF WAY CHECKED		
	CADD FILE NAME		

10-14-2009 16:07:41 BONDHUJ0
 C:\IC-WORKSPACE\BONDHUJ0\M-FS-0044.D-TRANS.071-2202-22866-001\CIVIL\CAD\99 ALL CONTRACTS\CONV\SHEETS\CONTRACT 03\DBC\03-SHT-PLANPROJ-21600.DGN



LEGEND

① PORTLAND CEMENT CONCRETE PAVEMENT 12" (JOINTED)	⑥ PCC DRIVEWAY PAVEMENT, 8"
② HOT-MIX ASPHALT SURFACE COURSE, MIX "C", N 50, 2"	⑦ AGGREGATE SHOULDERS, TYPE A, 6"
③ AGGREGATE SUBGRADE 12"	⑧ CLASS B PATCHES
④ COMBINATION CONCRETE CURB AND GUTTER, TYPE B-6.24	⑨ AGGREGATE SURFACE COURSE, TYPE B, 8"
⑤ HOT-MIX ASPHALT SHOULDERS, 8"	⑩ CHAIN LINK FENCE, 6'



FILE NAME =	USER NAME = #USER*	DESIGNED - JB	REVISED -	STATE OF ILLINOIS DEPARTMENT OF TRANSPORTATION I-70 CONNECTION	PROPOSED ROADWAY PLAN & PROFILE MAIN STREET STA. 211+00 TO STA. 223+94	F.A.P. RTE.	SECTION	COUNTY	TOTAL SHEETS	SHEET NO.	
#FILEL#		DRAWN - JB	REVISED -			9153	82-1K	ST. CLAIR	107	28	
PLOT SCALE = #SCALE*		CHECKED - ACL	REVISED -			CONTRACT NO. 76C40					
PLOT DATE = #DATE*		DATE - 10/09/09	REVISED -			FED. ROAD DIST. NO. ILLINOIS FED. AID PROJECT					



SCALE: HORIZ. 1"=50' VERT. 1"=5' STA. TO STA.

MATCH LINE STA. 222+20.72 SEE SHEET 25