

F.A.I. RTE.	SECTION	COUNTY	TOTAL SHEETS	SHEET NO.
64	82-1,2,3,4L-1	ST. CLAIR	15	1
FED. ROAD DIST. NO.		ILLINOIS	CONTRACT NO. 76D24	

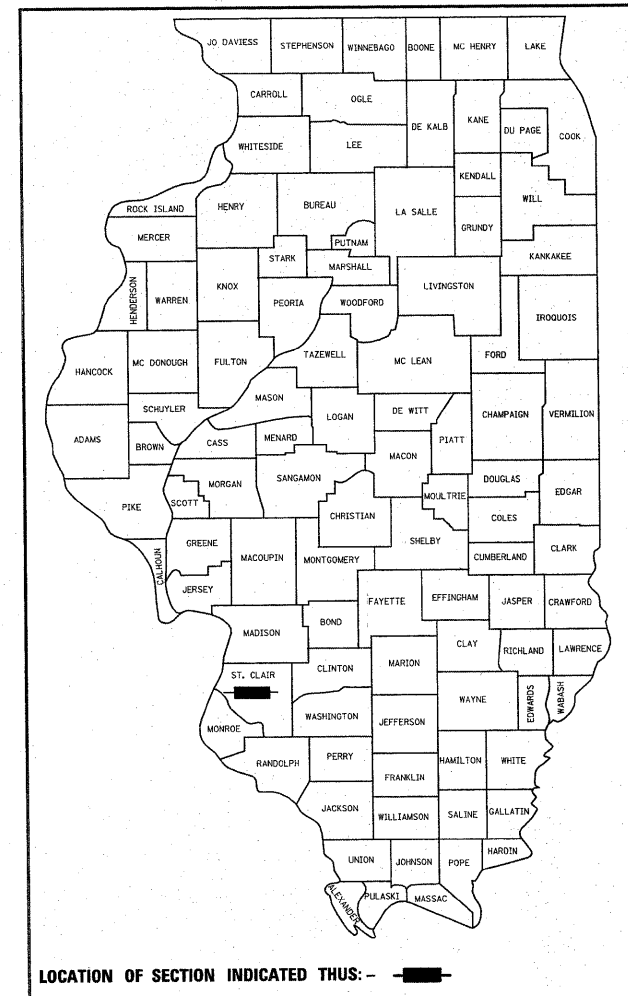
STATE OF ILLINOIS
DEPARTMENT OF TRANSPORTATION
DIVISION OF HIGHWAYS

PROPOSED
HIGHWAY PLANS

FAI ROUTE 64
SECTION 82-(1,2,3,4)L-1

ST. CLAIR COUNTY
HIGHWAY LIGHTING REHABILITATION
C-98-080-09

D-98-075-09

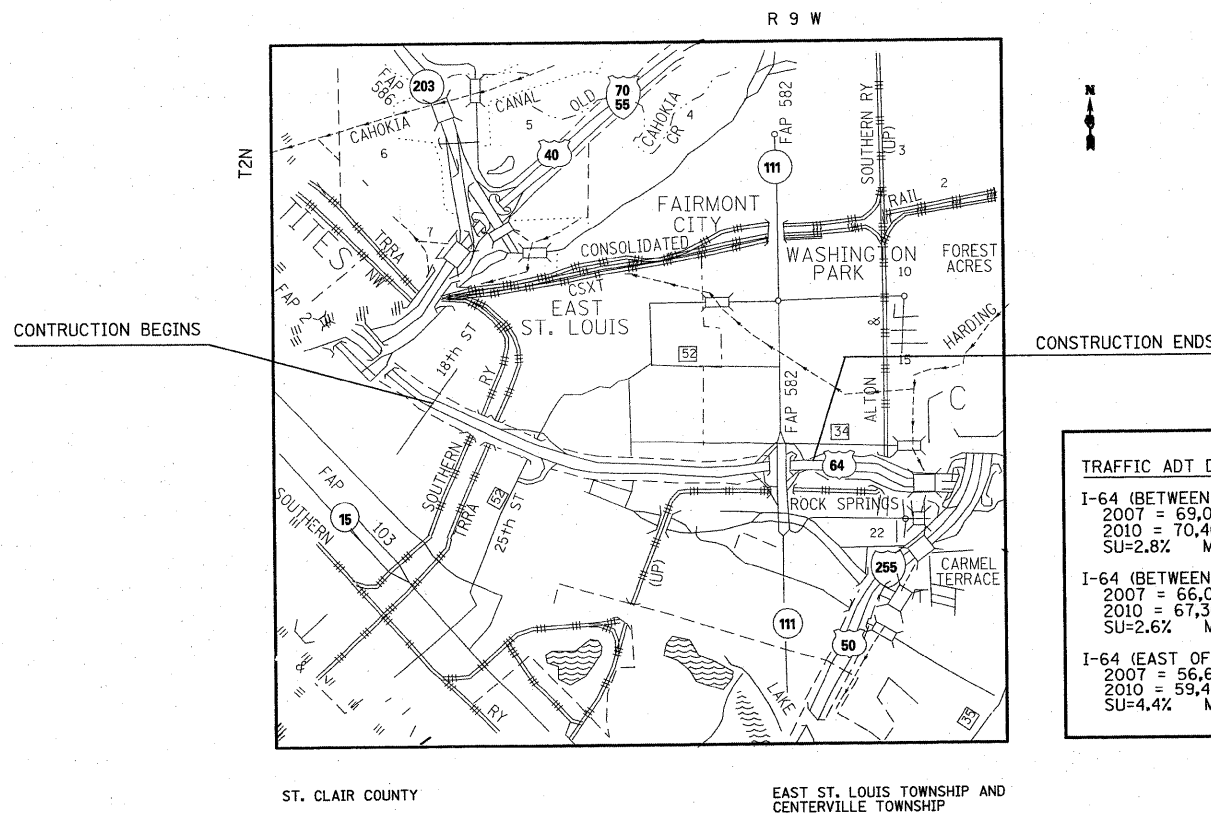


INDEX OF SHEETS

- 1 COVER PAGE
- 2 SUMMARY OF QUANTITIES AND GENERAL NOTES
- 3-11 HIGHWAY LIGHTING PLAN
- 12 HIGHWAY LIGHTING CABLE DIAGRAM
- 13-15 HIGHWAY LIGHTING STANDARD
- 16 NIGHT TIME LIGHTING INSPECTION

STANDARDS

- 000001-05
- 701001-02
- 701006-03
- 701101-02
- 701106-02
- 701301-03
- 701406-05
- 701456
- 701601-06
- 701901-01
- 720001-01
- 825026



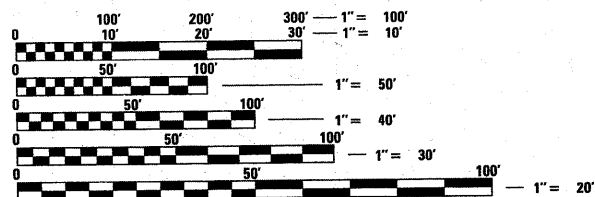
TRAFFIC ADT DATA	
I-64 (BETWEEN BAUGH AVE. AND 25th ST):	
2007 = 69,000 (ACTUAL)	
2010 = 70,400 (ESTIMATED)	
SU=2.8% MU=9.7%	
I-64 (BETWEEN 25th ST AND IL-111)	
2007 = 66,000 (ACTUAL)	
2010 = 67,300 (ESTIMATED)	
SU=2.6% MU=10.2%	
I-64 (EAST OF IL 111)	
2007 = 56,600 (ACTUAL)	
2010 = 59,400 (ESTIMATED)	
SU=4.4% MU=8.7%	

STATE OF ILLINOIS
DEPARTMENT OF TRANSPORTATION
DIVISION OF HIGHWAYS

SUBMITTED: Jan 28, 2010
Mr. C. Ammi
DEPUTY DIRECTOR OF HIGHWAYS, REGION 5 ENGINEER

March 19, 2010
Scott E. Stitt, P.E.
Acting ENGINEER OF DESIGN AND ENVIRONMENT

March 19, 2010
Christina M. Reed
DIRECTOR OF HIGHWAYS, CHIEF ENGINEER

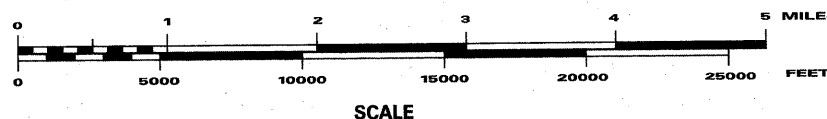


FULL SIZE PLANS HAVE BEEN PREPARED USING STANDARD ENGINEERING SCALES. REDUCED SIZED PLANS WILL NOT CONFORM TO STANDARD SCALES. IN MAKING MEASUREMENTS ON REDUCED PLANS, THE ABOVE SCALES MAY BE USED.

J.U.L.I.E.
JOINT UTILITY LOCATION INFORMATION FOR EXCAVATION
1-800-892-0123
OR 811

PROJECT ENGINEER PATTI LEBEAU (618) 346-3179
PROJECT MANAGER BHARAT PATEL (618) 346-3190

CONTRACT NO. 76D24



PRINTED BY THE AUTHORITY
OF THE STATE OF ILLINOIS

SUMMARY OF QUANTITIES

SUMMARY OF QUANTITIES			URBAN	CONSTRUCTION TYPE CODE Y030-1E	
CODE NO	ITEM	UNIT	TOTAL QUANTITIES	I-064 State-100%	
81100582	CONDUIT ATTACHED TO STRUCTURE, 1 1/4" DIA., ALUMINUM	FOOT	6	6	
25000200	SEEDING, CLASS 2	ACRE	1	1	
67000400	ENGINEER'S FIELD OFFICE, TYPE A	CAL MO	6	6	
67100100	MOBILIZATION	L SUM	1	1	
70100700	TRAFFIC CONTROL AND PROTECTION, STANDARD 701406	L SUM	1	1	
70100825	TRAFFIC CONTROL AND PROTECTION, STANDARD 701456	L SUM	1	1	
70102630	TRAFFIC CONTROL AND PROTECTION, STANDARD 701601	L SUM	1	1	
80300100	LOCATING UNDERGROUND CABLE	FOOT	17250	17250	
80400100	ELECTRIC SERVICE INSTALLATION	EACH	3	3	
81018500	CONDUIT PUSHED, 2" DIA., GALVANIZED STEEL	FOOT	1643	1643	
81018700	CONDUIT PUSHED, 3" DIA., GALVANIZED STEEL	FOOT	117	117	
81300310	JUNCTION BOX, STAINLESS STEEL, ATTACHED TO STRUCTURE, 8" X 6" X 4"	EACH	4	4	
81306500	REMOVE EXISTING JUNCTION BOX	EACH	4	4	
81603035	UNIT DUCT, 600V, 2-1C NO. 6, 1/C NO. 6 GROUND, (XLP-TYPE USE), 1" DIA. POLYETHYLENE	FOOT	19780	19780	
81702415	ELECTRIC CABLE IN CONDUIT, 600V (XLP-TYPE USE) 3-1/C NO. 6	FOOT	1625	1625	
81900200	TRENCH AND BACKFILL FOR ELECTRICAL WORK	FOOT	15770	15770	
82102400	LUMINAIRE, SODIUM VAPOR, HORIZONTAL MOUNT, 400 WATT	EACH	82	82	
82107300	UNDERPASS LUMINAIRE, 150 WATT, HIGH PRESSURE SODIUM VAPOR	EACH	14	14	
82500360	LIGHTING CONTROLLER, BASE MOUNTED, 480VOLT, 100AMP.	EACH	3	3	
83009100	LIGHT POLE, ALUMINUM, 45 FT. M.H., 4 FT. MAST ARM	EACH	5	5	
83024300	LIGHT POLE, ALUMINUM, TRANSFORMER BASE, 50 FT. M.H., 8 FT. MAST ARM	EACH	77	77	
84200500	REMOVAL OF LIGHTING UNIT, SALVAGE	EACH	96	96	
84500110	REMOVAL OF LIGHTING CONTROLLER	EACH	3	3	
84500120	REMOVAL OF ELECTRIC SERVICE INSTALLATION	EACH	3	3	
89502300	REMOVE ELECTRIC CABLE FROM CONDUIT	FOOT	4075	4075	
Z0048665	RAILROAD PROTECTIVE LIABILITY INSURANCE	L SUM	1	1	

GENERAL NOTES

- NEW SPLICES, FUSES, FUSE HOLDERS, AND SURGE PROTECTION SHALL BE PROVIDED AND INSTALLED FOR ALL LUMINAIRES BEING REPLACED. THIS WORK SHALL BE INCLUDED IN THE COST OF THE LUMINAIRE.
- ALL LIGHTING UNITS SHALL BE LABELED ACCORDING TO THE STANDARD SPECIFICATIONS, ARTICLE 1069.06. LIGHTING UNIT NUMBERS, WATTAGE, AND VOLTAGE SHALL BE AS SHOWN ON THE PLANS AND AS DIRECTED BY THE ENGINEER.
- CONTRACTOR SHALL BE RESPONSIBLE TO COORDINATE ELECTRICAL WORK WITH OTHER TRADES.
- ALL LUMINAIRES SHALL BE SALVAGED AND DELIVERED TO THE IDOT MAINTENANCE FACILITY IN ACCORDANCE WITH SECTION 842 OF THE STANDARD SPECIFICATION UNLESS NOTED OTHERWISE. THE LOCATION OF THE IDOT MAINTENANCE FACILITY IS 9601 ST. CLAIR AVE., FAIRVIEW HEIGHTS, IL. LUMINAIRES SHALL BE CRATED IN CONTAINERS ACCEPTABLE TO THE ENGINEER. LIGHT POLES SHALL NOT BE SALVAGED BUT SHALL BE REMOVED FROM THE JOB SITE AT THE CONTRACTOR'S EXPENSE.
- COORDINATION WITH THE DEPARTMENT'S BUREAU OF OPERATIONS IS REQUIRED BEFORE ANY TRENCHING SHALL BE DONE TO LOCATE HIGHWAY LIGHTING/PUMP STATION/INTELLIGENT TRANSPORTATION SYSTEM/TRAFFIC SIGNAL AND TO COORDINATE OTHER FIELD ACTIVITIES. ANY DAMAGE OCCURRED TO SUCH FACILITIES DUE TO THE CONSTRUCTION ACTIVITIES, THE REPAIR SHALL BE MADE TO THE SATISFACTION OF THE ENGINEER AT THE CONTRACTOR'S EXPENSE.
- IN ACCORDANCE WITH THE IDOT-IEPA "AGREEMENT ON MICRO SCALE AIR QUALITY ASSESSMENTS FOR IDOT SPONSORED TRANSPORTATION PROJECTS", THIS IS EXEMPT FROM A PROJECT-LEVEL CARBON MONOXIDE AIR QUALITY ANALYSIS BECAUSE IT DOES NOT ADD THROUGH LANES OR AUXILIARY TURNING LANES.
- ILLINOIS STATE LAW REQUIRES A 48-HOUR NOTICE BE GIVEN TO ALL UTILITIES BEFORE DIGGING. FIELD MARKING OF FACILITIES MAY BE OBTAINED BY CONTACTING J.U.L.I.E. OR FOR NON-MEMBERS, THE UTILITY COMPANY DIRECTLY. AGENCIES KNOWN TO HAVE FACILITIES WITHIN THE PROJECT AREA ARE AS FOLLOWS:
 - * AMEREN CIPS (GAS)
 - * AMEREN UE (ELECTRIC)
 - * AT&T ILLINOIS (COMM)
 - * BUCKEYE PARTNERS L.P.-WOOD RIVER PIPE LINE
 - * CENTER POINT ENERGY (PIPE LINE)
 - * CITY OF EAST. ST. LOUIS (LIGHTING)
 - * ILLINOIS AMERICAN WATER CO. (WTR)
 - * MEDIACOM (CABLE T.V.)
 - * METRO (COMM.)
 - * VILLAGE OF WASHINGTON PARK (SAN. SEWER)

(MEMBERS OF J.U.L.I.E. (800) 892-0123 ARE INDICATED BY " * ". NON-JULIE MEMBERS MUST BE NOTIFIED INDIVIDUALLY)
- THE INSIDE EDGE OF THE TRENCH UNDER THE PAY ITEM TRENCH AND BACKFILL FOR ELECTRICAL WORK SHALL BE TWO FEET OR MORE FROM THE EXISTING PAVEMENT, CURB AND GUTTER, STABILIZED SHOULDER, OR SIDEWALK.
- BRIDGE PARAPET MOUNTED LIGHT POLES SHALL BE "ANCHOR BASE" AND SHALL BE PROVIDED WITH VIBRATION ISOLATION MOUNTING PADS ACCORDING TO ARTICLE 1069.07 OF THE STANDARD SPECIFICATIONS AND AS SHOWN IN THE PLAN DETAILS. A STAINLESS STEEL SCREEN SHALL BE INSTALLED TO SEAL THE OPENING BELOW THE POLE BASE FROM RODENT ENTRY. LIGHT POLE # 58, 60, AND 100 ARE MOUNTED ON THE BRIDGE PARAPET.
- LIGHT POLES MOUNTED ON A WALL BRACKET ^{FOR NEW WALL} SHALL BE INSTALLED FLUSH TO THE MOUNTING BRACKET. ^{FOR WINDOW WALL} SHIMS, IF NEEDED, SHALL BE STAINLESS STEEL. A LIGHT POLES # 55 IS MOUNTED ON THE BRACKET.
- ALL 400 WATTS LUMINAIRES SHALL HAVE TYPE III MEDIUM DISTRIBUTION WITH FULL-CUT OFF, UNLESS NOTED. THE COST SHALL BE INCLUDED WITH LUMINAIRE, SODIUM VAPOR, HORIZ. MT., 400 WATTS.
- PROPOSED LIGHTING CONTROLLER #2, #3, AND #5 SHALL BE INSTALLED ON EXISTING FOUNDATIONS. THE CONTRACTOR SHALL UTILIZE NEW STAINLESS STEEL MOUNTING HARDWARE. NO ADDITIONAL COMPENSATION WILL BE ALLOWED.
- A PHOTOCCELL FOR CONTROLLER #3 SHALL BE MOUNTED EXTERNALLY ON 1" GSC CONDUIT, 12" (MIN.) ABOVE THE CABINET. THE COST SHALL BE INCLUDED WITH THE LIGHTING.
- A PHOTOCCELL FOR CONTROLLERS #2 AND #5 SHALL BE MOUNTED ON THE EXISTING CONDUIT AT THE SERVICE POLE. THE COST SHALL BE INCLUDED WITH ELECTRIC SERVICE INSTALLATION.
- THE EXISTING SERVICE INSTALLATION FOR CONTROLLER # 3 SHALL BE REMOVED AND REPLACED. EXISTING TRANSFORMER AND SECONDARY CONNECTION BOX SHALL BE RELOCATED TO A NEW SERVICE POLE. THE COST SHALL BE INCLUDED WITH "ELECTRIC SERVICE INSTALLATION".
- AMEREN UE APPROVAL IS REQUIRED FOR SERVICE POLE LOCATION AND POLE SIZE PRIOR TO CONSTRUCTION. THE POLE SHALL NOT EXCEED 28 FEET ABOVE GROUND.
- THE CONTRACTOR SHALL VERIFY THAT MOUNTING HOLES IN BASE PLATE OF THE PROPOSED LIGHT POLE SHALL MATCH WITH ANCHORS IN THE EXISTING FOUNDATION. IF REPAIR IS NECESSARY, IT SHALL BE TO THE SATISFACTION OF THE ENGINEER AND AT THE CONTRACTOR'S EXPENSE.
- THE FOLLOWING PROJECTS ARE ANTICIPATED TO BE UNDER CONSTRUCTION AT THE SAME TIME.
 - FAI ROUTE 64, SECTION: DIST. 8 ITS 2010-1, ST. CLAIR COUNTY AND
 - FAI ROUTE 64, SECTION: DIST 8 ITS 2010-3, ST. CLAIR COUNTY
 - FAI ROUTE 64, SECTION: 82-2VB-2, ST. CLAIR COUNTY

COOPERATION BETWEEN CONTRACTORS SHALL BE AS PER ARTICLE 105.08 OF THE STANDARD SPECIFICATIONS.

TRAFFIC CONTROL & PROTECTION SCHEDULE

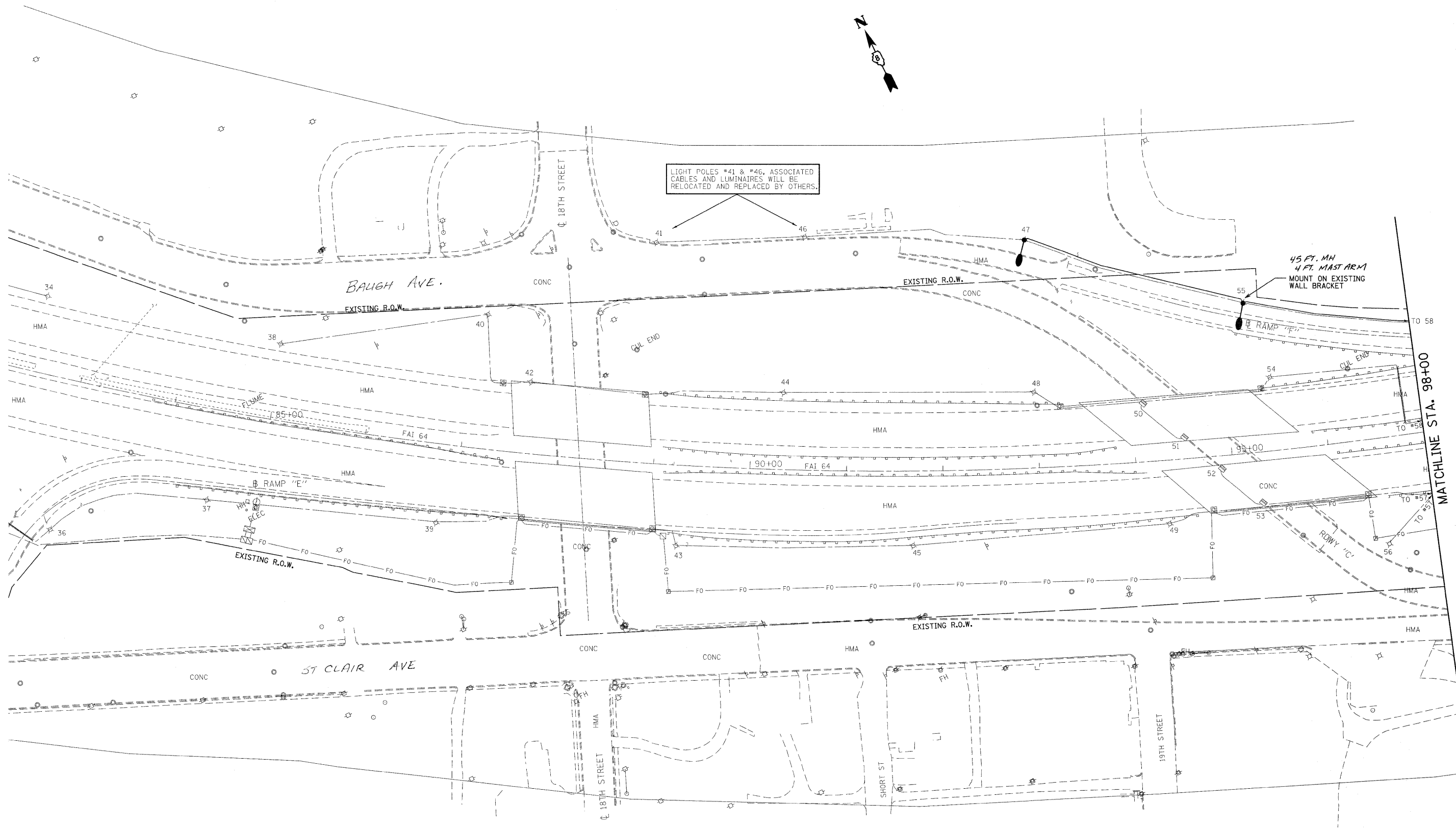
STANDARD	LOCATION
701406	BRIDGE OVER NS & TRRA R.R. (LT# 58 & 60)
701456	BOUGH AVE. RAMP AND 25TH ST. RAMP TO I-64 (EB)
701601	25TH ST.

COMMITMENTS
ALL EXCAVATED MATERIAL WILL REMAIN ON SITE.

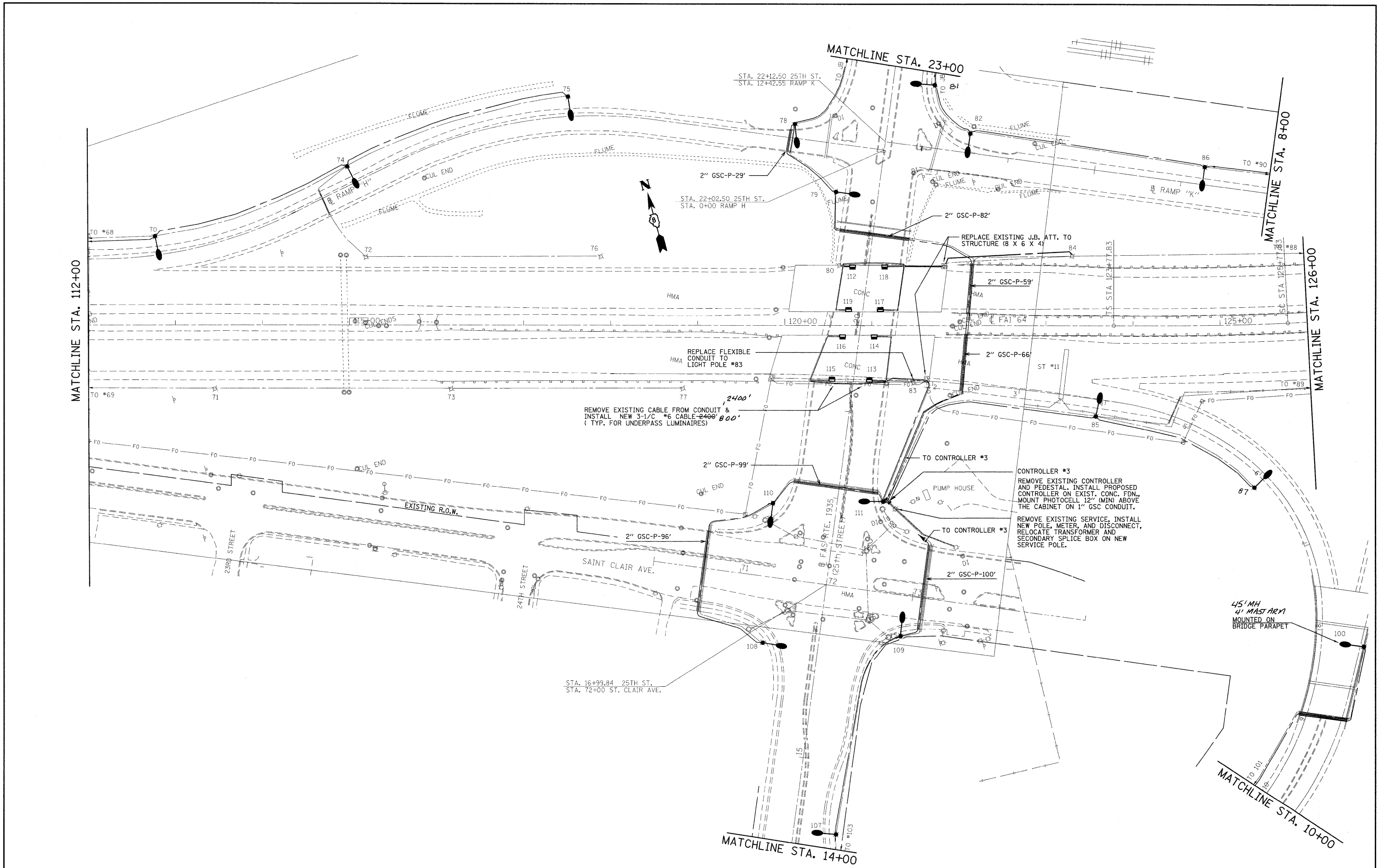


LIGHT POLES #41 & #46, ASSOCIATED CABLES AND LUMINAIRES WILL BE RELOCATED AND REPLACED BY OTHERS.

45 FT. MH
4 FT. MAST ARM
MOUNT ON EXISTING WALL BRACKET



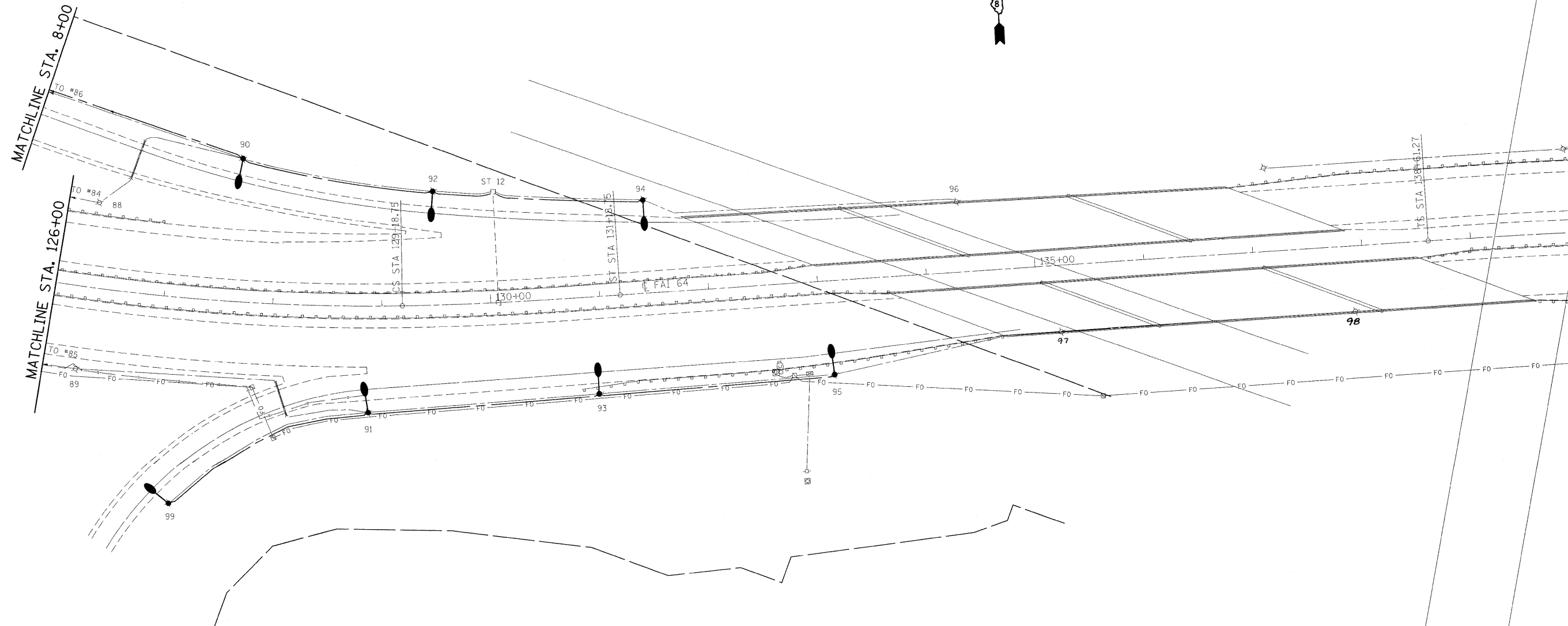
FILE NAME = c:\pwork\PWIDOT\PATELBM\d0148511\d87	USER NAME = patelbm d24-sht-light.dgn	DESIGNED - BP DRAWN - SP	REVISED - REVISED - REVISED - REVISED -	STATE OF ILLINOIS DEPARTMENT OF TRANSPORTATION	HIGHWAY LIGHTING PLAN	F.A.I. RTE. 64	SECTION 82-(1,2,3,4)I-1	COUNTY ST. CLAIR	TOTAL SHEETS 15	SHEET NO. 3
	PLOT SCALE = 50,000 ' / IN. PLOT DATE = 1/26/2010	CHECKED - DATE -	SCALE: 1"=50' SHEET NO. 1 OF 9 SHEETS STA. TO STA.			CONTRACT NO. 76D24 FED. ROAD DIST. NO. ILLINOIS FED. AID PROJECT				



FILE NAME = es:\pwwork\pwwd00\pate\lbn\d0148511\d07624-ah-1-light.dgn	USER NAME = pte\lbn	DESIGNED - BP	REVISED -	STATE OF ILLINOIS DEPARTMENT OF TRANSPORTATION	HIGHWAY LIGHTING PLAN			F.A.I. RTE. 64	SECTION 82-(1,2,3,4)I-1	COUNTY ST. CLAIR	TOTAL SHEETS 15	SHEET NO. 5
	PLOT SCALE = 50,0000 ' / IN.	DRAWN - SP	CHECKED -		REVISED -	SCALE: 1"=50'	SHEET NO. 3 OF 9 SHEETS	STA. TO STA.	CONTRACT NO. 76D24		FED. ROAD DIST. NO. ILLINOIS FED. AID PROJECT	

MATCHLINE STA. 8+00

MATCHLINE STA. 126+00



FILE NAME =
 c:\pwwork\p\WIDOT\p\ATELBM\d0148511\d87624-sht-light.dgn

USER NAME = pataibm
 PLOT SCALE = 50.0000' / IN.
 PLOT DATE = 1/26/2010

DESIGNED - BP
 DRAWN - SP
 CHECKED -
 DATE -

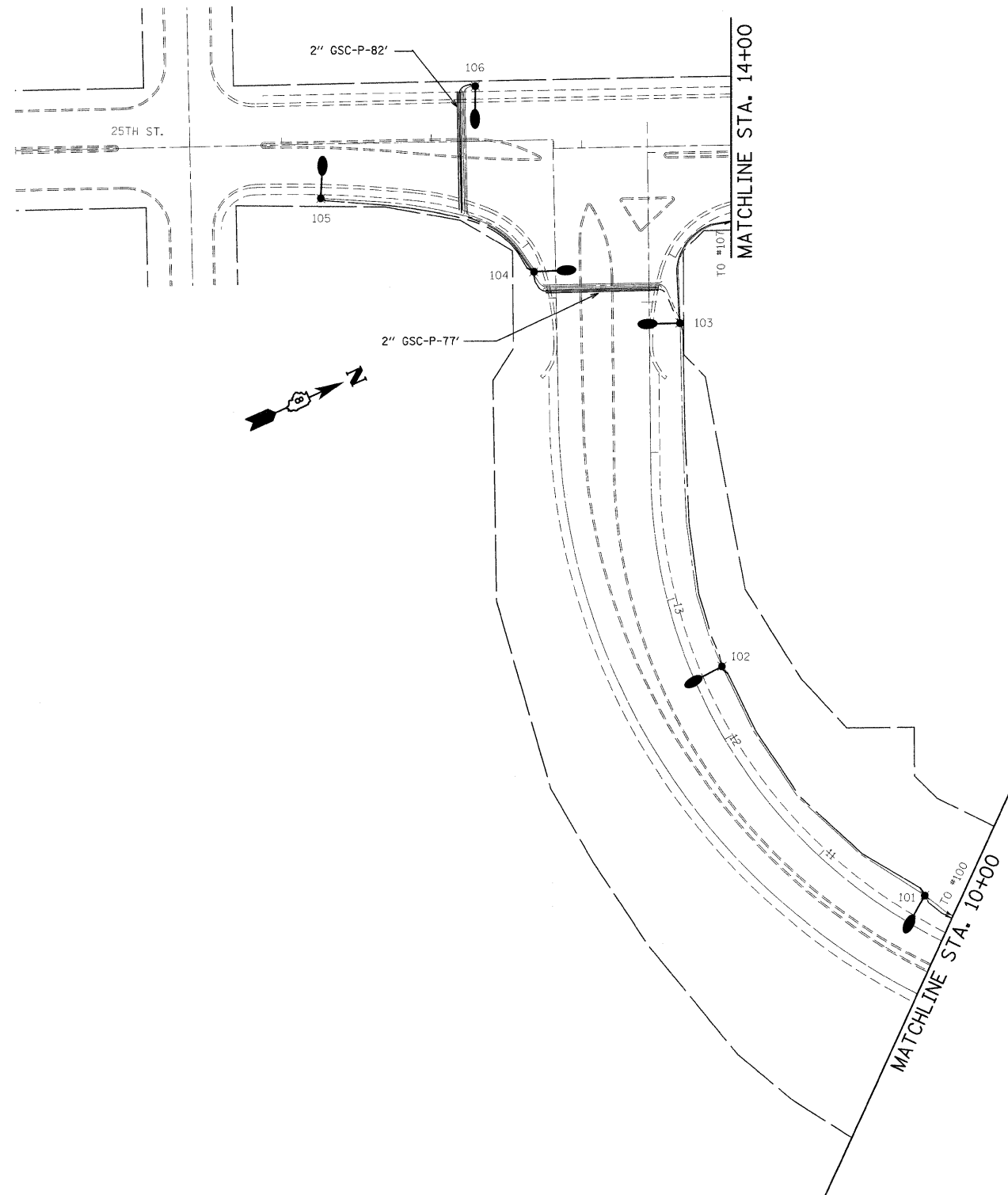
REVISED -
 REVISED -
 REVISED -
 REVISED -

**STATE OF ILLINOIS
 DEPARTMENT OF TRANSPORTATION**

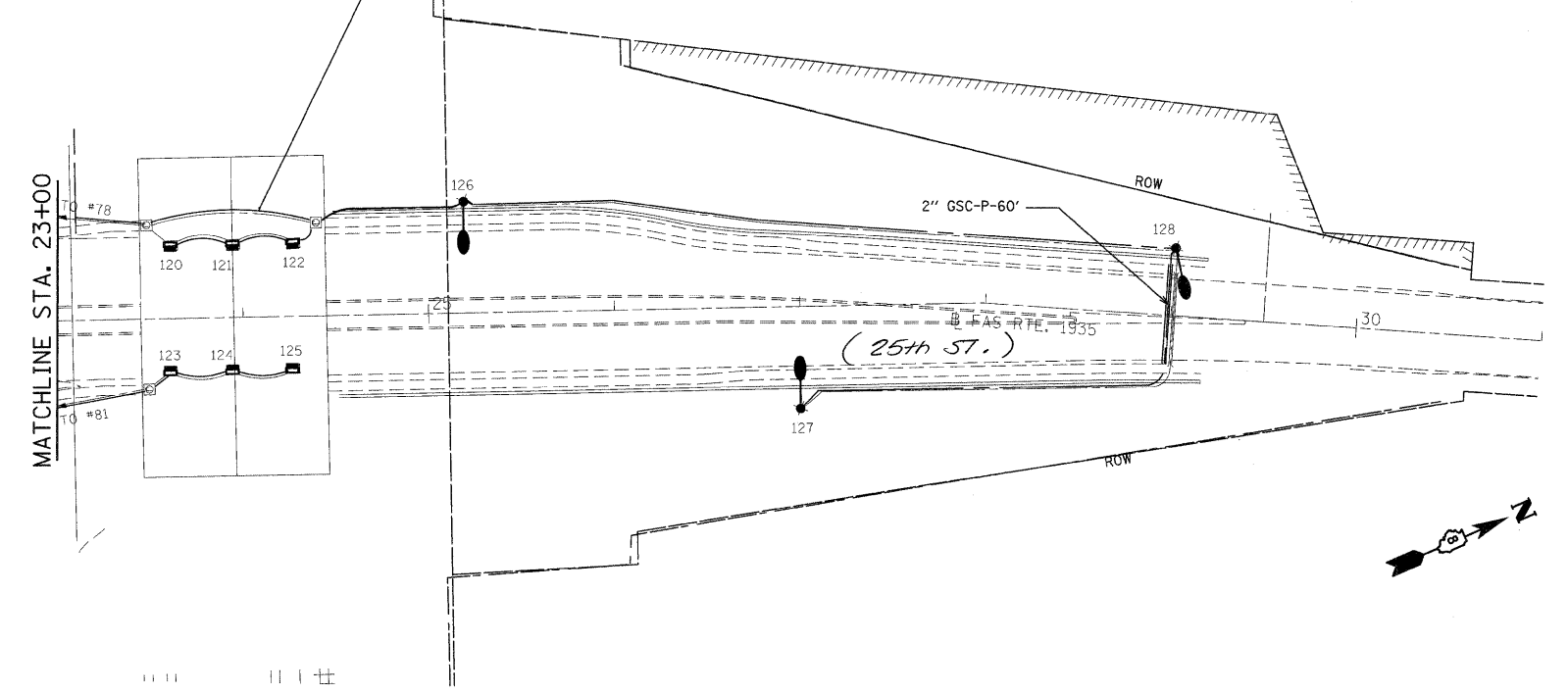
HIGHWAY LIGHTING PLAN

SCALE: 1"=50' SHEET NO. 4 OF 9 SHEETS STA. TO STA.

F.A.I. RTE.	SECTION	COUNTY	TOTAL SHEETS	SHEET NO.
64	82-(1,2,3,4)I-1	ST. CLAIR	15	6
CONTRACT NO. 76D24				
FED. ROAD DIST. NO.		ILLINOIS FED. AID PROJECT		



REMOVE EXISTING CABLES FROM CONDUIT & INSTALL NEW 3-1/2" #6 CABLE 1200' (TYP. FOR UNDERPASS LUMINAIRES)



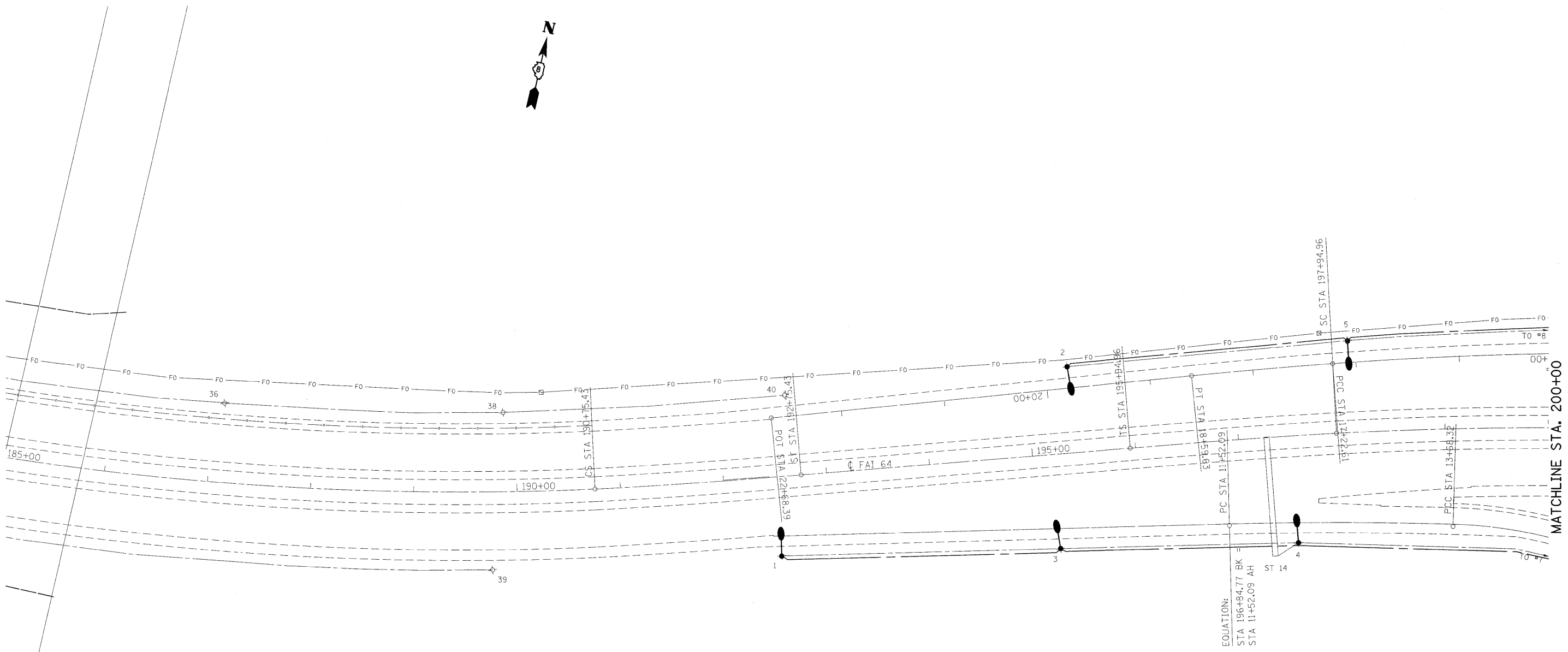
FILE NAME =	USER NAME = patelbm	DESIGNED - BP	REVISED -
ca:\pw\work\PWID001\PATELBM\d0148511\d876	24-sh1-light.dgn	DRAWN - SP	REVISED -
	PLOT SCALE = 50.0000' / IN.	CHECKED -	REVISED -
	PLOT DATE = 1/26/2010	DATE -	REVISED -

**STATE OF ILLINOIS
DEPARTMENT OF TRANSPORTATION**

HIGHWAY LIGHTING PLAN

SCALE: 1"=50' SHEET NO. 5 OF 9 SHEETS STA. TO STA.

F.A.I. RTE.	SECTION	COUNTY	TOTAL SHEETS	SHEET NO.
64	82-(1,2,3,4)I-1	ST. CLAIR	15	7
CONTRACT NO. 76D24				
FED. ROAD DIST. NO.		ILLINOIS FED. AID PROJECT		



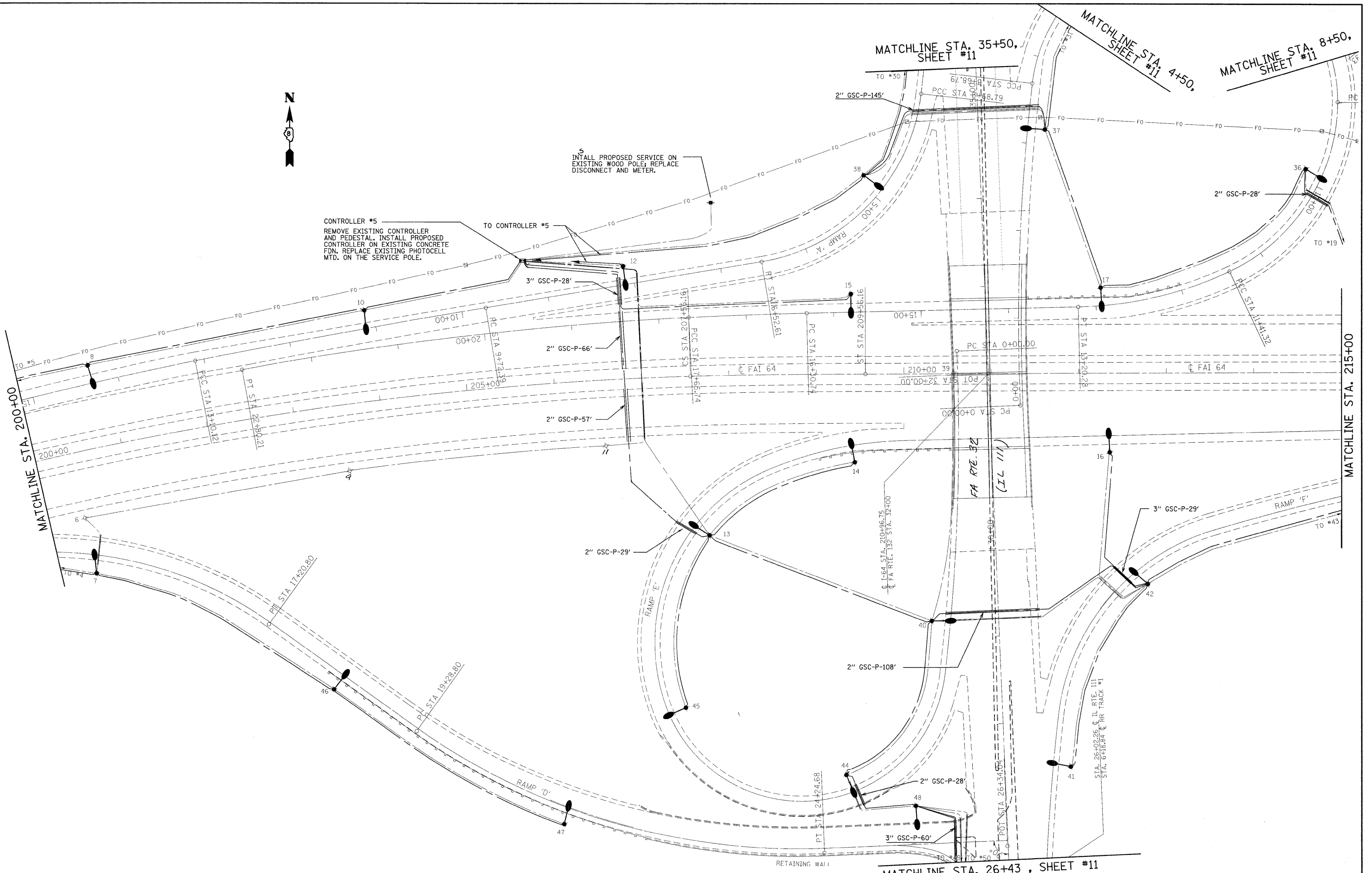
FILE NAME =	USER NAME = petelbm	DESIGNED - BP	REVISED -
c:\pwork\pwork\IDOT\PA TELBM\d0148511\d876	24-shr-light.dgn	DRAWN - SP	REVISED -
	PLOT SCALE = 50.0000 "/ IN.	CHECKED -	REVISED -
	PLOT DATE = 1/26/2010	DATE -	REVISED -

**STATE OF ILLINOIS
DEPARTMENT OF TRANSPORTATION**

HIGHWAY LIGHTING PLAN

SCALE: 1"=50' SHEET NO. 7 OF 9 SHEETS STA. TO STA.

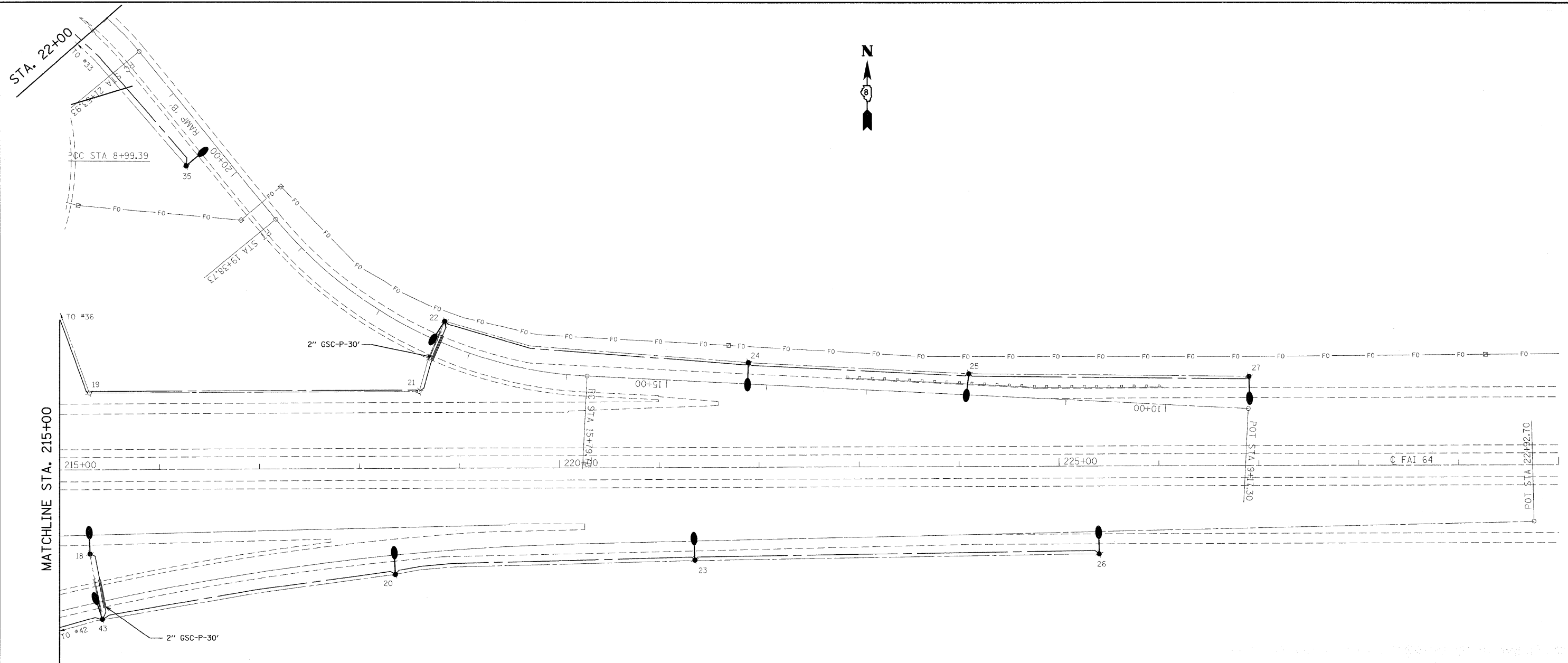
F.A.I. RTE.	SECTION	COUNTY	TOTAL SHEETS	SHEET NO.
64	82-(1,2,3,4)I-1	ST. CLAIR	15	8
CONTRACT NO. 76D24				
FED. ROAD DIST. NO.		ILLINOIS FED. AID PROJECT		



CONTROLLER #5
 REMOVE EXISTING CONTROLLER AND PEDESTAL. INSTALL PROPOSED CONTROLLER ON EXISTING CONCRETE FDN. REPLACE EXISTING PHOTOCELL MTD. ON THE SERVICE POLE.

INSTALL PROPOSED SERVICE ON EXISTING WOOD POLE; REPLACE DISCONNECT AND METER.

FILE NAME =	USER NAME = petelbm	DESIGNED - BP	REVISED -	STATE OF ILLINOIS DEPARTMENT OF TRANSPORTATION	HIGHWAY LIGHTING PLAN			F.A.I. RTE.	SECTION	COUNTY	TOTAL SHEETS	SHEET NO.	
ca:\pwwork\p\WID001\PA TELBM\d0148511\d976	24-shr-light.dgn	DRAWN - SP	REVISED -		SCALE: 1:50	SHEET NO. 7 OF 9 SHEETS	STA.	TO STA.	64	82-(1,2,3,4)L-1	ST. CLAIR	15	9
	PLOT SCALE = 50.0000' / IN.	CHECKED -	REVISED -										
	PLOT DATE = 1/26/2010	DATE -	REVISED -										
								CONTRACT NO. 76D24					
								FED. ROAD DIST. NO. ILLINOIS FED. AID PROJECT					



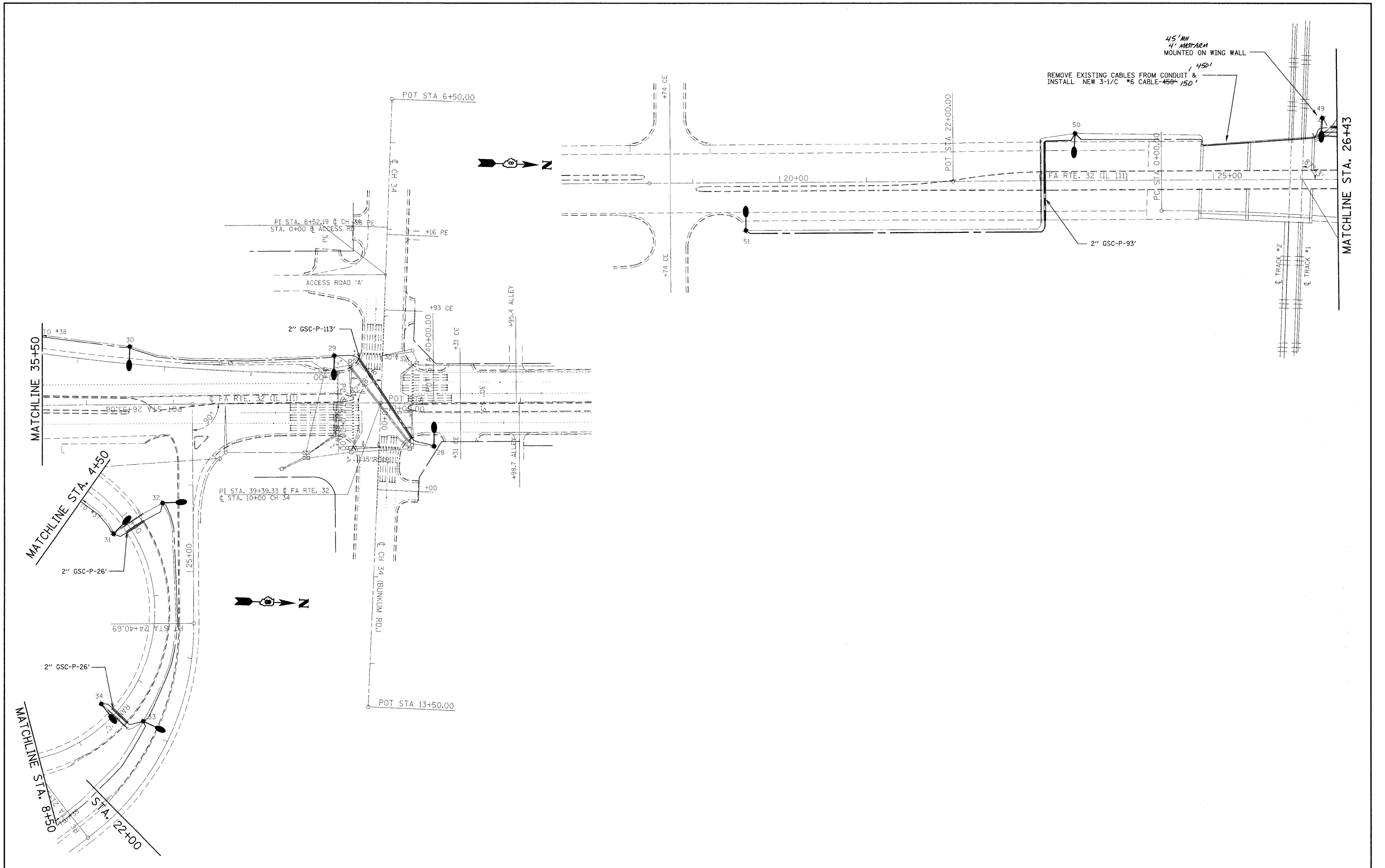
FILE NAME =	USER NAME = petelbm	DESIGNED - BP	REVISED -
es:\pwwork\pwwid01\pate\lbn\d0148511\d876	24-shr-light.dgn	DRAWN - SP	REVISED -
	PLOT SCALE = 50.0000' / IN.	CHECKED -	REVISED -
	PLOT DATE = 1/26/2010	DATE -	REVISED -

**STATE OF ILLINOIS
DEPARTMENT OF TRANSPORTATION**

HIGHWAY LIGHTING PLAN

SCALE: 1"=50' SHEET NO. 8 OF 9 SHEETS STA. TO STA.

F.A.I. RTE.	SECTION	COUNTY	TOTAL SHEETS	SHEET NO.
64	82-(1,2,3,4)I-1	ST. CLAIR	15	10
CONTRACT NO. 76D24				
FED. ROAD DIST. NO.		ILLINOIS FED. AID PROJECT		

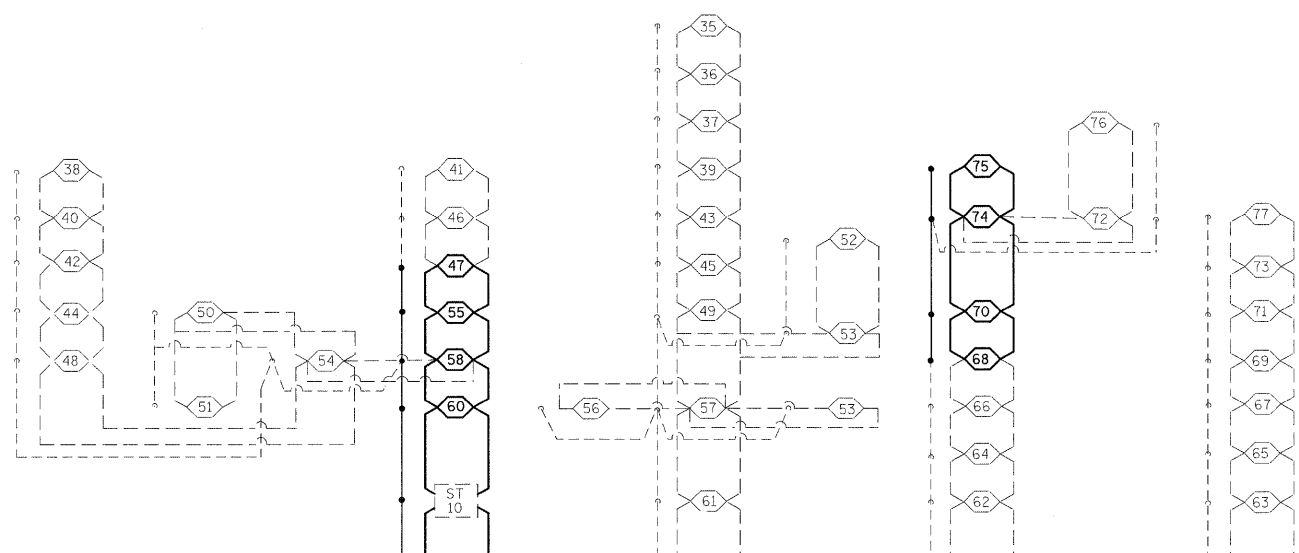


FILE NAME =	USER NAME = patelbm	DESIGNED - BP	REVISED -
ca:\pw\work\PW0001\PA TEL BM\d0148511\d876	24-shr-light.dgn	DRAWN - SP	REVISED -
	PLOT SCALE = 50.0000' / IN.	CHECKED -	REVISED -
	PLOT DATE = 1/26/2010	DATE -	REVISED -

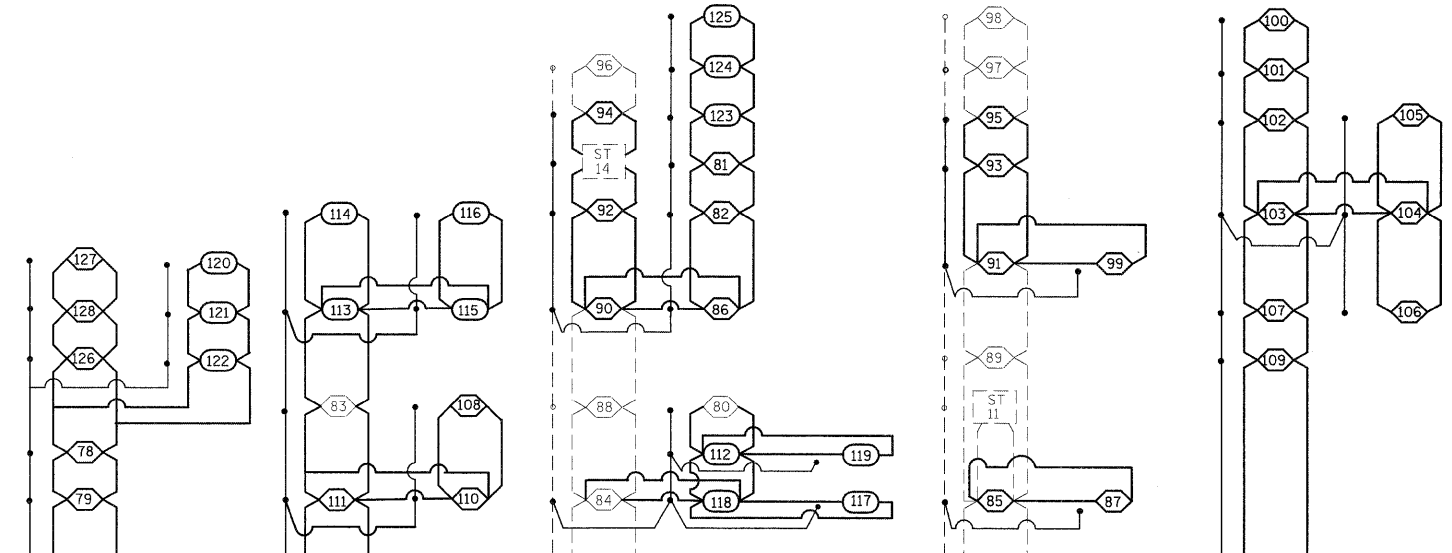
**STATE OF ILLINOIS
DEPARTMENT OF TRANSPORTATION**

HIGHWAY LIGHTING PLAN			
SCALE: 1"=50'	SHEET NO. 9 OF 9 SHEETS	STA.	TO STA.

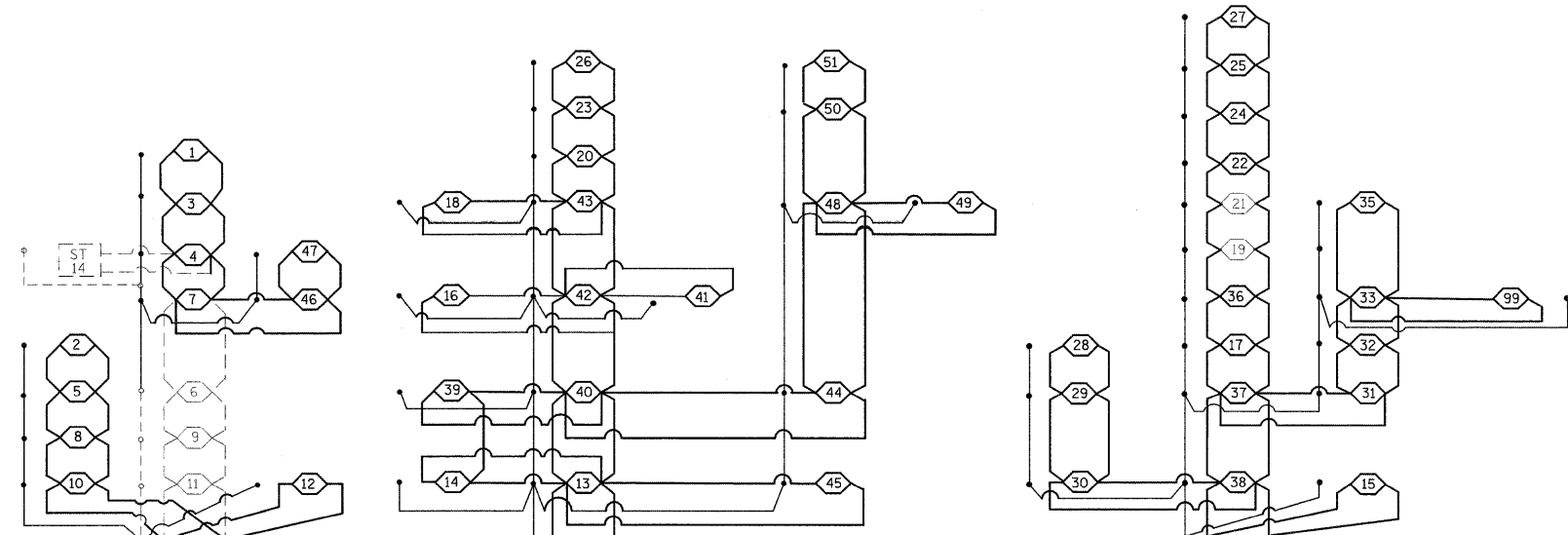
F.A.I. RTE.	SECTION	COUNTY	TOTAL SHEETS	SHEET NO.
64	82-(1,2,3,4)L-1	ST. CLAIR	15	11
CONTRACT NO. 76D24				
FED. ROAD DIST. NO. ILLINOIS FED. AID PROJECT				



CONTROLLER NO. 2
480 VOLT 100 AMP
50 AMP CIRCUIT BREAKERS



CONTROLLER NO. 3
480 VOLT 100 AMP
50 AMP CIRCUIT BREAKERS



CONTROLLER NO. 5
480 VOLT 100 AMP
50 AMP CIRCUIT BREAKERS

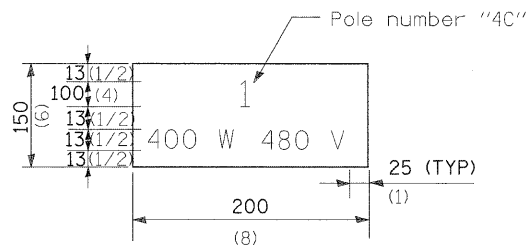
FILE NAME =	USER NAME = pstelbm	DESIGNED - BP	REVISED -
ca:\pwwork\pwidot\pstelbm\d014851\d076	24-sh-t-light.dgn	DRAWN - SP	REVISED -
	PLOT SCALE = 50,0000 / IN.	CHECKED -	REVISED -
	PLOT DATE = 1/26/2010	DATE -	REVISED -

STATE OF ILLINOIS
DEPARTMENT OF TRANSPORTATION

CABLE DIAGRAM

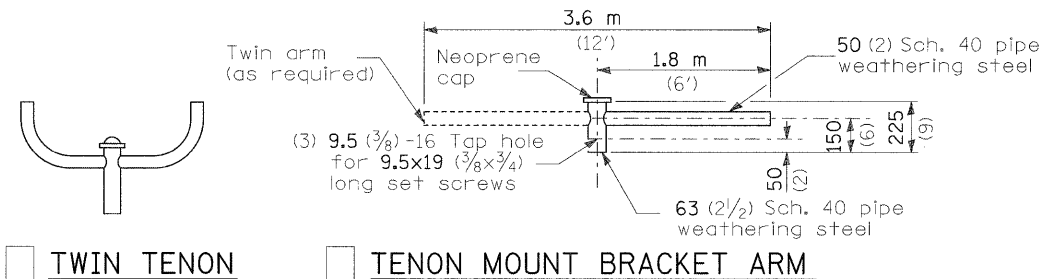
SCALE: NONE SHEET NO. 1 OF 1 SHEETS STA. TO STA.

F.A.I. RTE.	SECTION	COUNTY	TOTAL SHEETS	SHEET NO.
64	82-(1,2,3,4)I-1	ST. CLAIR	15	12
CONTRACT NO. 76D24				
FED. ROAD DIST. NO.		ILLINOIS FED. AID PROJECT		



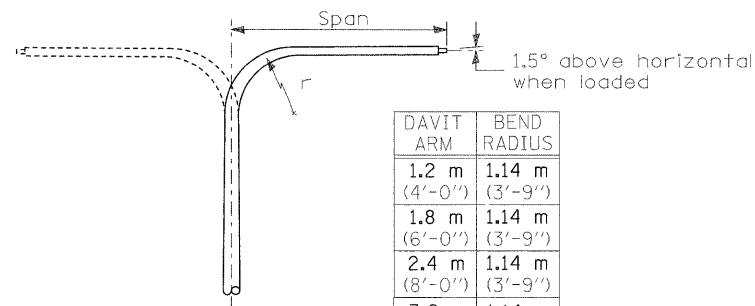
The contractor shall furnish and install a light pole identification of each new light pole, as shown above, incidental to the respective light pole pay item. The numerals shall be 100 (4) series "C", black, screened on silver-white type B pressure sensitive reflective sheeting conforming to the requirements of Section 1091 of the Standard Specifications. The numerals shall conform to the FHWA "Standard Alphabets for Highway Signs".

The light pole identification shall be applied to sign base material as specified in Article 1069.06 of the Standard Specifications, visible to approaching traffic in accordance with Highway Standard 720001.

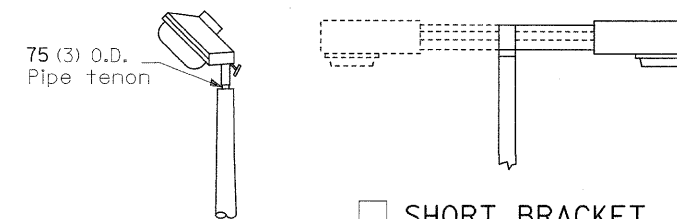


TWIN TENON TENON MOUNT BRACKET ARM

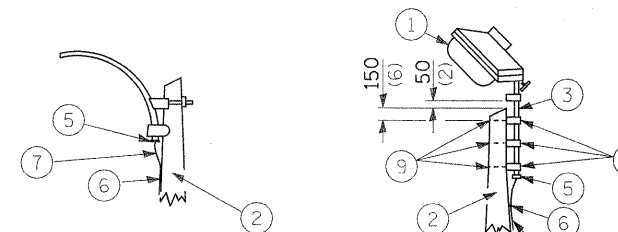
NOTE: Single or twin arm assembly shall be tilted 3° above horizontal.



DAVIT ARM DAVIT ARM-TWIN

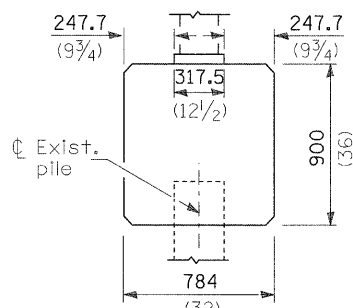
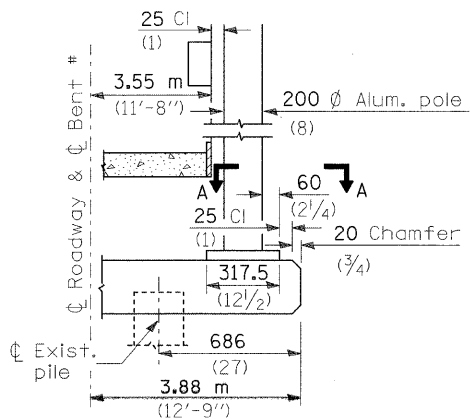


TENON SHORT BRACKET SHORT BRACKET - TWIN

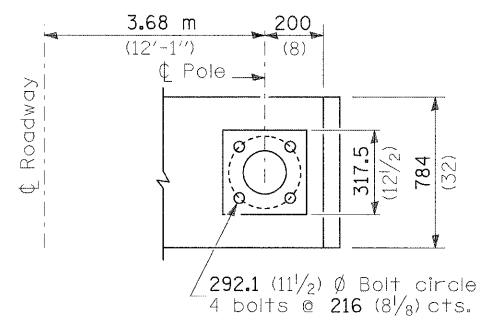


MAST ARM TENON

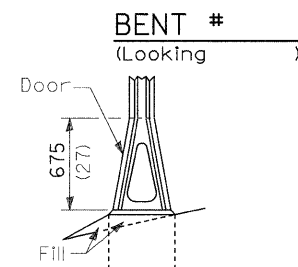
- ① Luminaire
- ② Wood pole, class 3 or better
- ③ 63 (2 1/2) Galv. steel conduit
- ④ Single offset pole band
- ⑤ Conduit bushing
- ⑥ Cable clamps on 600 (24) centers
- ⑦ 2/c #12 Type use cable
- ⑧ 25 (1) Galv. steel conduit 3.0 m (10') in length
- ⑨ 16 (5/8) Ø hot dipped galvanized bolt with flat washer & locknut (3 req'd)
- ⑩ Conduit clamps on 900 (36) centers
- ⑪ Unit duct
- ⑫ Threaded reducer
- ⑬ "C" Condulet, threaded
- ⑭ 40 (1 1/2) Galv. steel conduit for 1 unit duct or 75 (3) galv. steel conduit for 2 or 3 unit ducts.



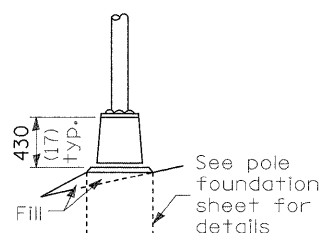
BRIDGE PIER MOUNT



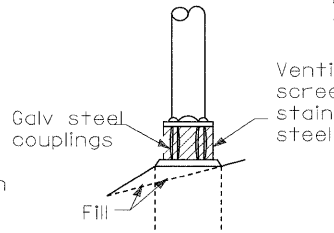
SECTION A-A



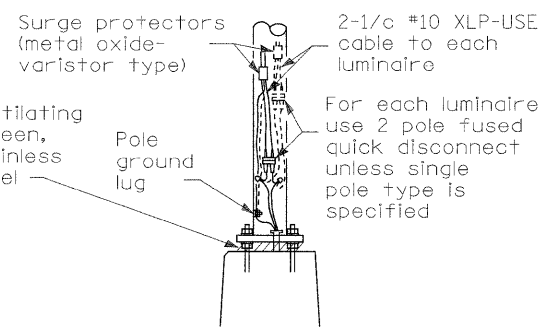
STAINLESS STEEL FLAIR BASE



TRANSFORMER BASE



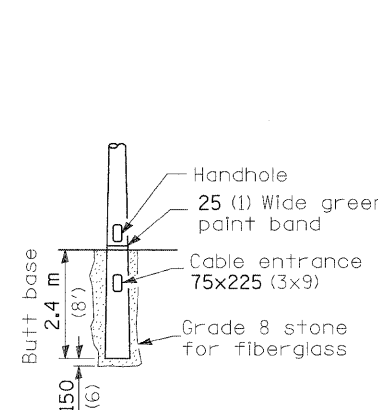
BREAKAWAY COUPLING



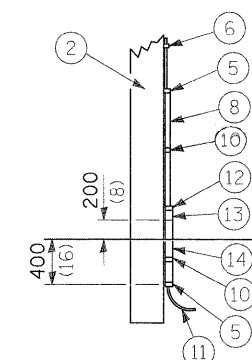
ANCHOR

METAL OR CONCRETE

Details for underground distribution if required



BUTT BASE



POLE, WOOD

POLE LENGTH	DEPTH IN GROUND
19.8 m (65')	3.6 m (12')
18.0 m (60')	3.0 m (10')
16.8 m (55')	2.7 m (9')
16.0 m (50')	2.4 m (8')
13.7 m (45')	2.1 m (7')
12.0 m (40')	2.0 m (6.5')
10.7 m (35')	1.8 m (6')
9.0 m (30')	1.7 m (5.5')

All dimensions are in millimeters (inches) unless otherwise shown.

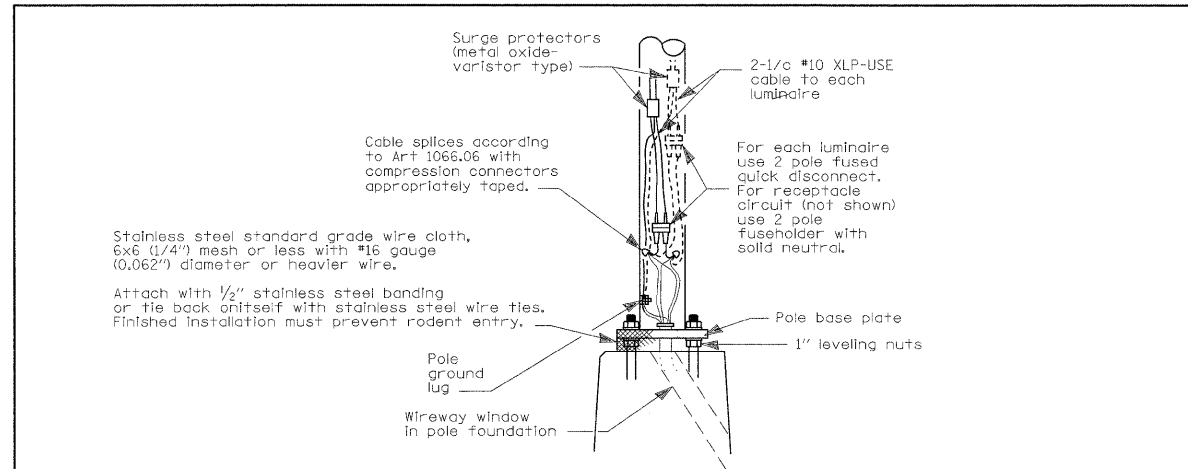
DATE	REVISIONS
	Corrected 6/24/09

POLE STANDARDS

DRAFT

LGTO08.M32

DRAFT COPY
not for distribution



WIRING DETAIL
NO SCALE

GENERAL NOTES

All taped splices shall use 2 layers of electrical tape over 3 layers of rubber tape as required by the Standard Specifications. Coat the finished taped splice with bonding compound.
All cable splices shall be taped unless another method has been specifically approved by the Engineer.
For example purposes the pole is shown on an anchor base. If the pole is required to be set on a breakaway base, consult the Standard Specifications.

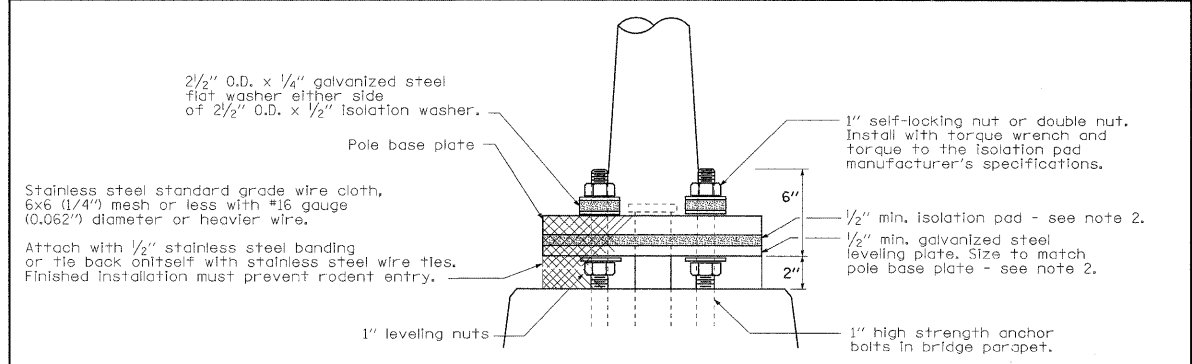
All dimensions are in millimeters (inches) unless otherwise shown.

DATE	REVISIONS
7/31/08	Updated

POLE HANDHOLE WIRING

DRAFT

LGT008A.DGN



Pole Mounted on Bridge Parapet Detail

GENERAL NOTES

Locate poles over bridge piers where possible.

The vibration isolation pad and leveling plate shall match the footprint of the pole base plate.

Thickness of isolation pad and washers shall be according to the isolation pad manufacturer's recommendations based upon pole height and loading.

Should the length of the exposed anchor bolts be too short on an existing bridge to mount the poles as shown, then the leveling plate shall be mounted directly on the concrete and leveled with stainless steel washers. Remove concrete as directed by the Engineer to fully thread the top nut.

All dimensions are in millimeters (inches) unless otherwise shown.

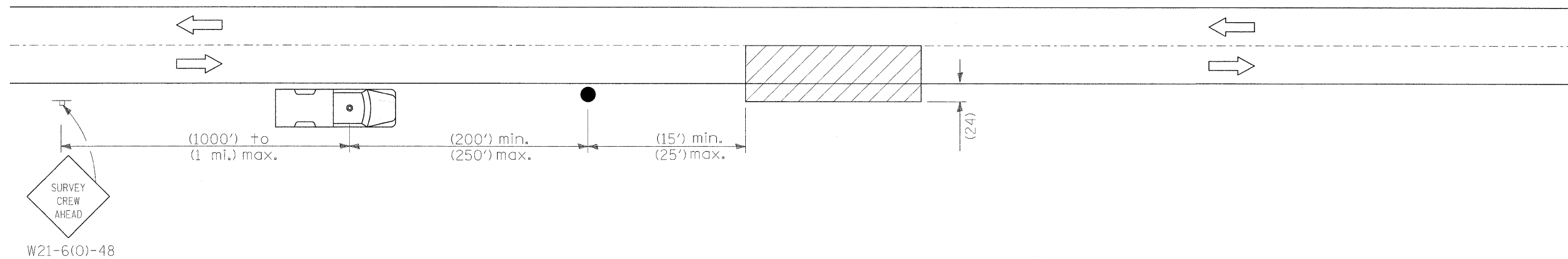
DATE	REVISIONS
7/31/08	Updated

POLE MOUNTED ON BRIDGE PARAPET

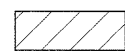
DRAFT

LGT018A.DGN

DRAFT COPY
not for distribution



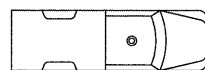
SYMBOLS



Work area



Sign on portable or permanent support



Truck with flashing amber light and dual emergency flashers



Flagger with traffic control sign

TYPICAL APPLICATIONS
Utility operations

All dimensions are in inches, unless otherwise shown.

FILE NAME =	USER NAME = patelbm	DESIGNED -	REVISED -	STATE OF ILLINOIS DEPARTMENT OF TRANSPORTATION	DETAIL FOR NIGHTTIME LIGHTING INSPECTION			F.A.I. RTE.	SECTION	COUNTY	TOTAL SHEETS	SHEET NO.
ca\pwork\PWIDOT\PAELBM\d014851\1\0876	24-shr-light.dgn	DRAWN -	REVISED -					64	82-(1,2,3,4)I-1	ST. CLAIR	15	15
	PLOT SCALE = 50.0000' / IN.	CHECKED -	REVISED -		CONTRACT NO. 76D24							
	PLOT DATE = 1/26/2010	DATE -	REVISED -		SCALE: NONE	SHEET NO. 3 OF 3 SHEETS	STA.	TO STA.	FED. ROAD DIST. NO.	ILLINOIS FED. AID PROJECT		