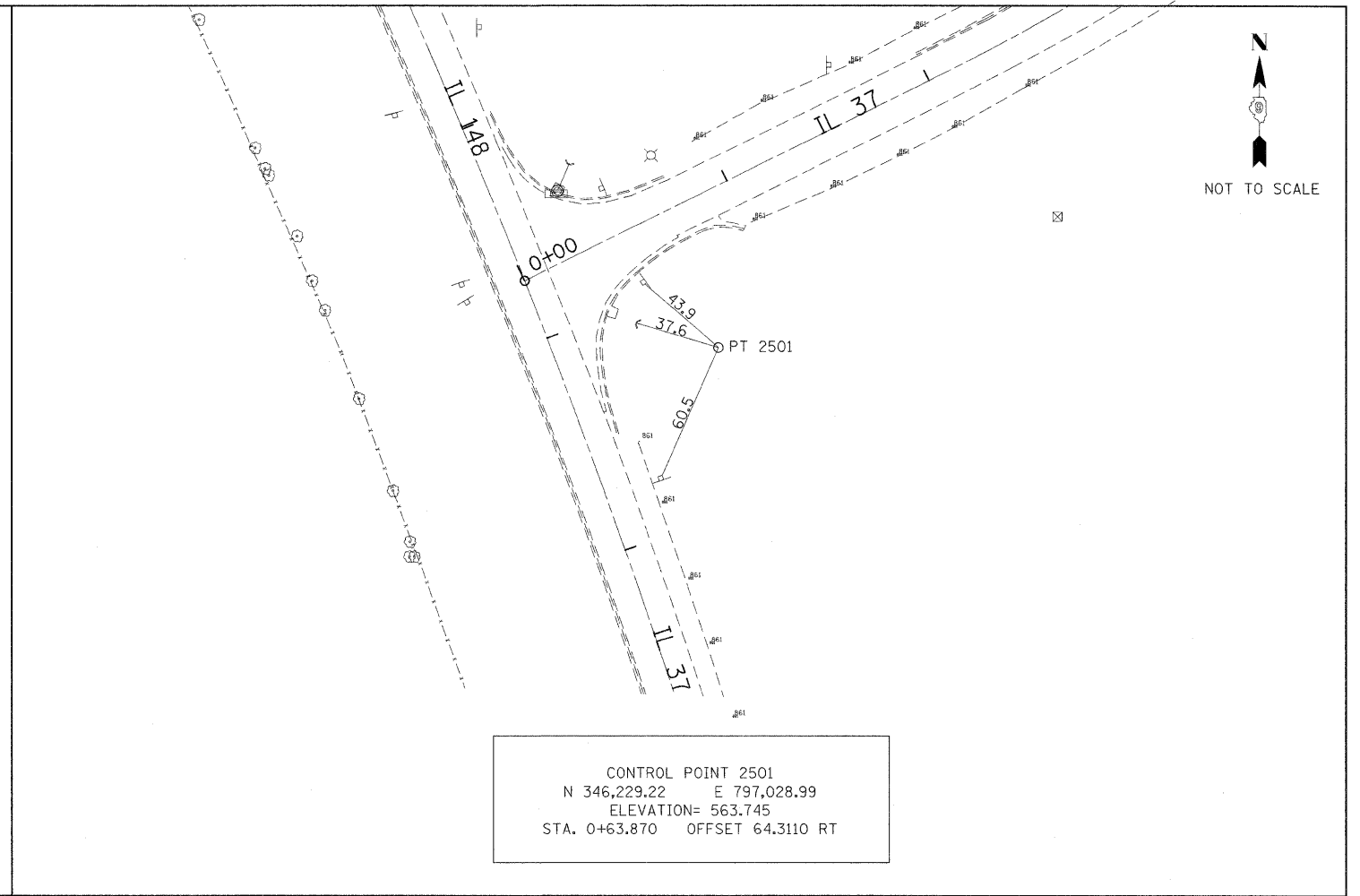
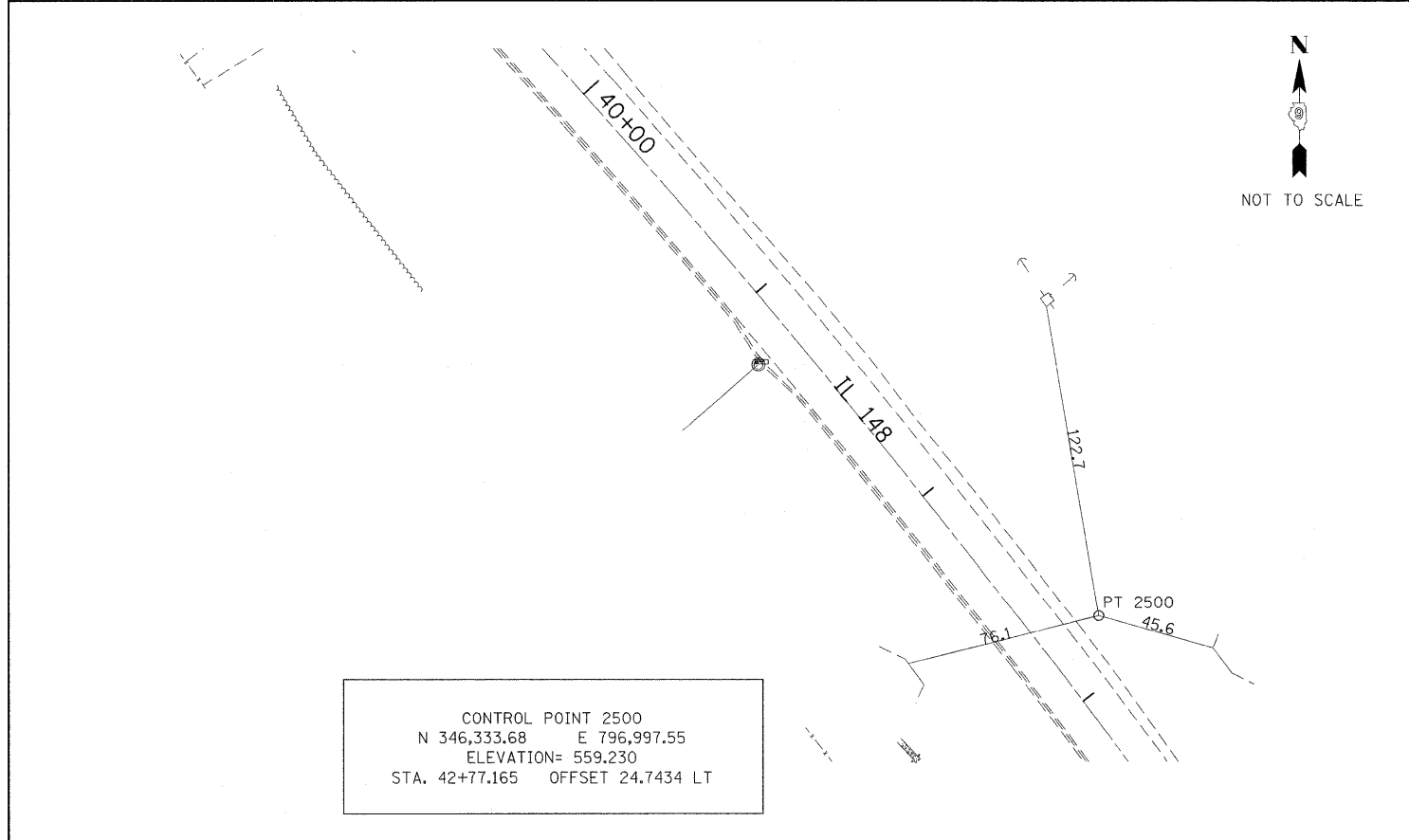


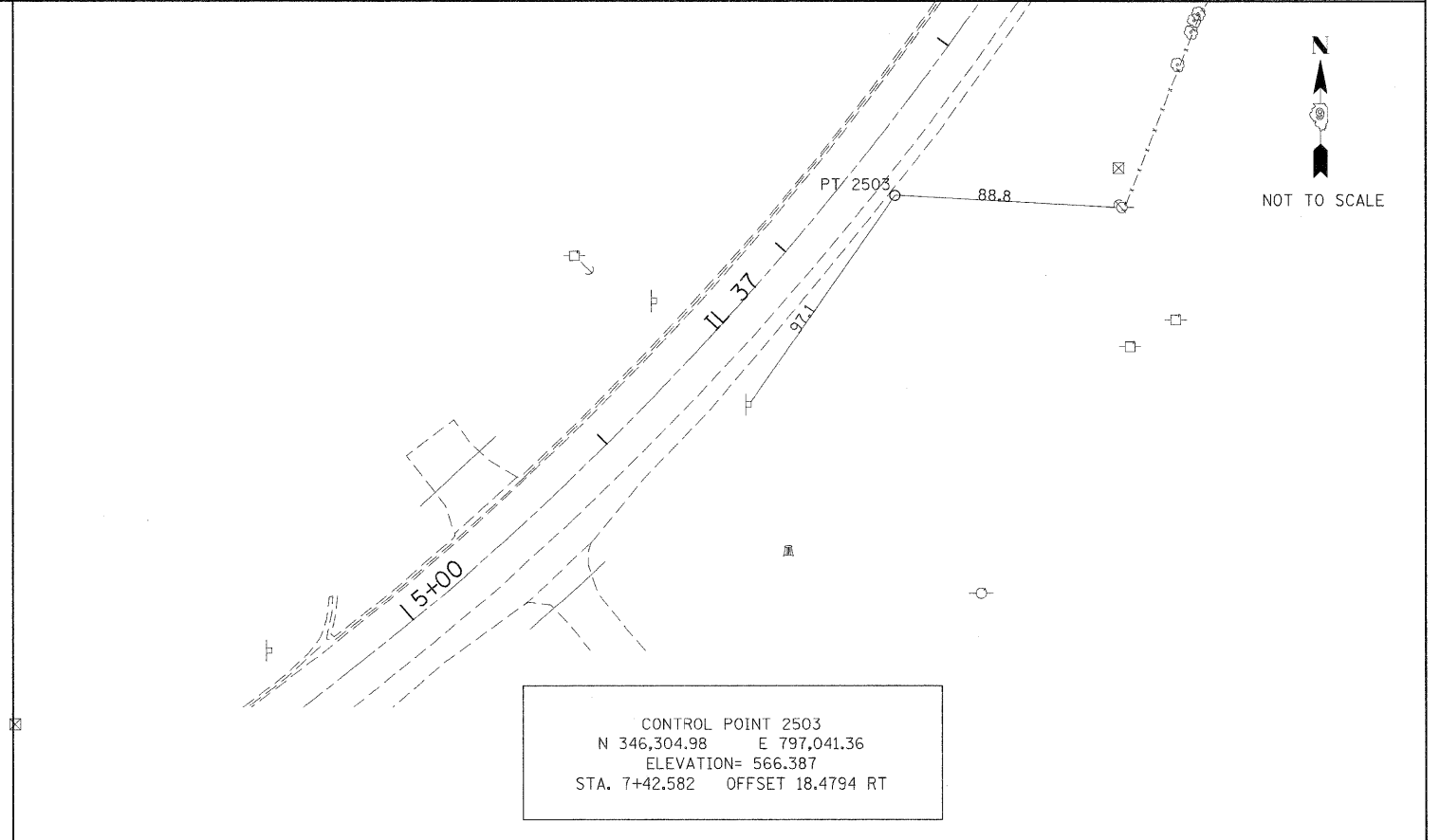
CONTROL POINT 2502
 N 346,274.20 E 797,035.51
 ELEVATION= 565.426
 STA. 61+91.338 OFFSET 28.0385 LT.



CONTROL POINT 2501
 N 346,229.22 E 797,028.99
 ELEVATION= 563.745
 STA. 0+63.870 OFFSET 64.3110 RT



CONTROL POINT 2500
 N 346,333.68 E 796,997.55
 ELEVATION= 559.230
 STA. 42+77.165 OFFSET 24.7434 LT



CONTROL POINT 2503
 N 346,304.98 E 797,041.36
 ELEVATION= 566.387
 STA. 7+42.582 OFFSET 18.4794 RT

FILE NAME =	USER NAME = naesdp	DESIGNED -	REVISED -	STATE OF ILLINOIS DEPARTMENT OF TRANSPORTATION	SCALE:		SHEET NO. OF SHEETS STA. TO STA.	F.A. RTE.	SECTION	COUNTY	TOTAL SHEETS	SHEET NO.
ct:\pw_work\pxidot\naesdp\d0113864\78113-sheet-plan.dgn		DRAWN -	REVISED -		148/37	113(N-1)		WILLIAMSON	91	35		
PLOT SCALE = 50.0000' / IN.		CHECKED -	REVISED -		CONTRACT NO. 78113							
PLOT DATE = 1/27/2010		DATE -	REVISED -		ILLINOIS FED. AID PROJECT							