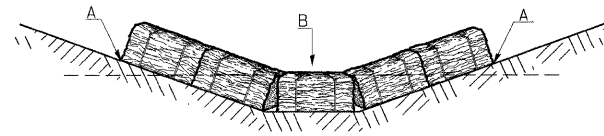


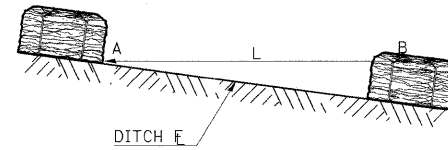
TEMPORARY DITCH CHECKS

PLACEMENT OF TEMPORARY STRAW BALE DITCH CHECK IN DRAINAGEWAY



POINTS A SHOULD BE HIGHER THAN POINT B

SPACING BETWEEN TEMPORARY DITCH CHECKS

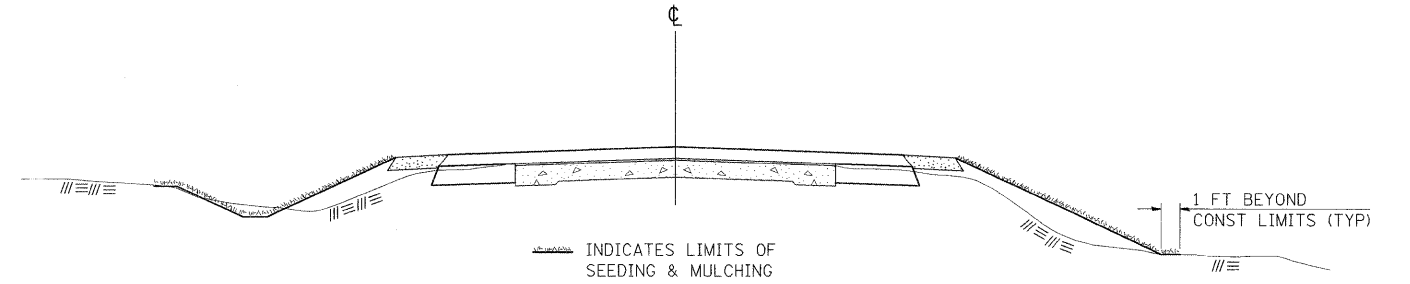


- L = THE DISTANCE SUCH THAT POINTS A AND B ARE OF EQUAL ELEVATION
- B = THE LOW POINT IN CENTER OF CHECK

REVISIONS	
DRAWN	9-01-99
REVISED	10-3-01
RESIZED	5-8-08

STD. 9-108

SEEDING & MULCHING



GENERAL NOTES

IN GENERAL, ALL EARTH SURFACES DISTURBED DURING CONSTRUCTION OPERATIONS SHALL BE SEED AND MULCHED UPON COMPLETION OF ALL GRADING OPERATIONS.

FERTILIZER NUTRIENTS AND LIMESTONE SHALL BE APPLIED TO ALL SEEDED AREAS.

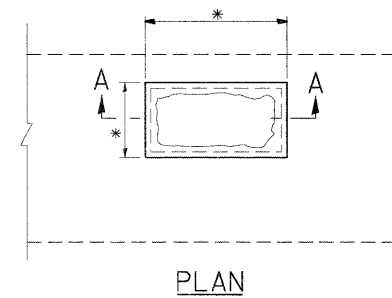
THE RATES OF APPLICATION OF FERTILIZER, MULCH AND LIMESTONE SHALL BE AS SPECIFIED IN THE SPECIAL PROVISIONS.

SECTIONS 250 AND 251 OF THE STANDARD SPECIFICATIONS SHALL GOVERN THIS WORK EXCEPT AS SPECIFIED HEREIN OR AS NOTED IN THE SPECIAL PROVISIONS.

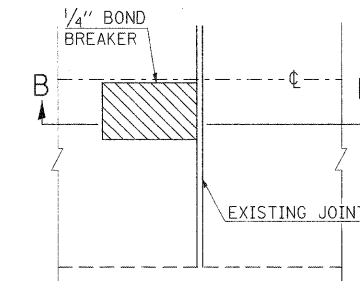
REVISIONS	
REDRAWN	2-15-89
REVISED	8-15-94
REVISED	6-3-99
REVISED	3-27-08

STD. 9-12

DETAILS OF P.C.C. PATCHING-PARTIAL DEPTH

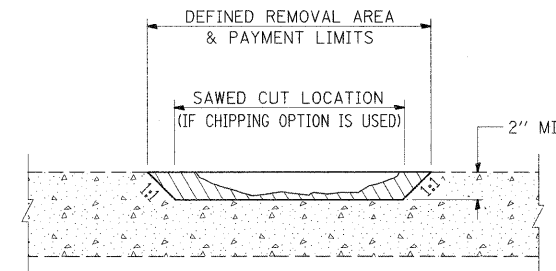


PLAN

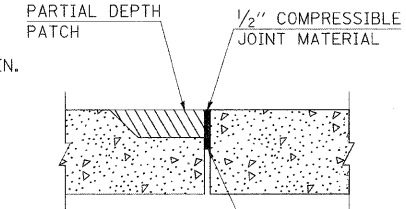


PLAN

* LIMITS OF PARTIAL DEPTH PATCHING AS DIRECTED BY THE ENGINEER.



SECTION A-A



SECTION B-B

NOTES:

THE CONTRACTOR HAS THE OPTION OF SAWING THE PAVEMENT AND CHIPPING THE EDGES OR BY MILLING THE DEFINED AREA OF THE PATCH.

THE PAVEMENT SHALL BE SAWED A MINIMUM OF 2 INCH DEPTH IF THE SAWING OPTION IS USED.

THE DIAMETER OF THE WHEEL SAW OR MILLING MACHINE SHALL BE OF SUFFICIENT SIZE TO MAINTAIN THE 1:1 SIDE SLOPE. CHIPPING MAY STILL BE REQUIRED ON NARROW SIDES IF SO DIRECTED BY THE ENGINEER.

BEFORE SANDBLASTING, ALL VISIBLE WIRE MESH SHALL BE REMOVED FLUSH WITH THE CONCRETE BEING PATCHED.

IMMEDIATELY BEFORE APPLYING GROUT PRIOR TO CONCRETE PLACEMENT ALL EXPOSED SURFACES SHALL BE CLEANED BY SANDBLASTING, AIRBLASTING, WASHING AND BRUSHING.

A HAND VIBRATOR OR VIBRATING SCREED SHALL BE USED DURING THE PATCHING OPERATIONS. BURLAP CURING BLANKETS ARE NOT REQUIRED. CURING SHALL BE WITH CURING COMPOUNDS MEETING THE APPROVAL OF THE ENGINEER.

FOR ADDITIONAL REQUIREMENTS AND BASIS OF PAYMENT, SEE THE SPECIAL PROVISIONS.

REVISIONS	
DRAWN	2-15-89
REVISED	3-26-08
REVISED	
REVISED	

STD. 9-37

FILE NAME =	USER NAME = nseesp	DESIGNED -	REVISED -	STATE OF ILLINOIS DEPARTMENT OF TRANSPORTATION	DETAIL SHEET				F.A. RTE.	SECTION	COUNTY	TOTAL SHEETS	SHEET NO.
cd:\pw_work\pki\dot\nseesp\0113864\78113	ht:miso.dgn	DRAWN -	REVISED -		148/37	113(N-1)	WILLIAMSON	91	39				
	PLOT SCALE = 7.3407 1/1 IN.	CHECKED -	REVISED -						CONTRACT NO. 78113				
	PLOT DATE = 1/26/2010	DATE -	REVISED -						ILLINOIS FED. AID PROJECT				