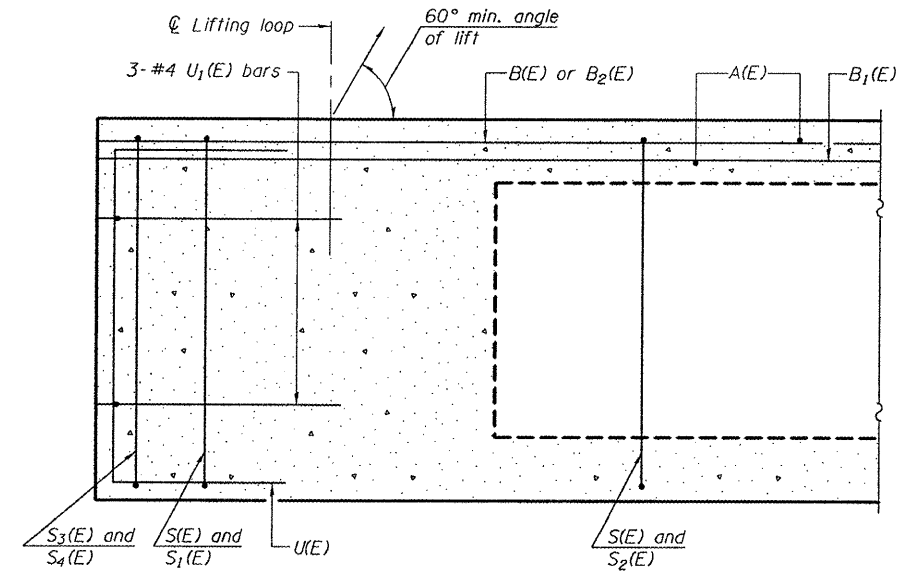
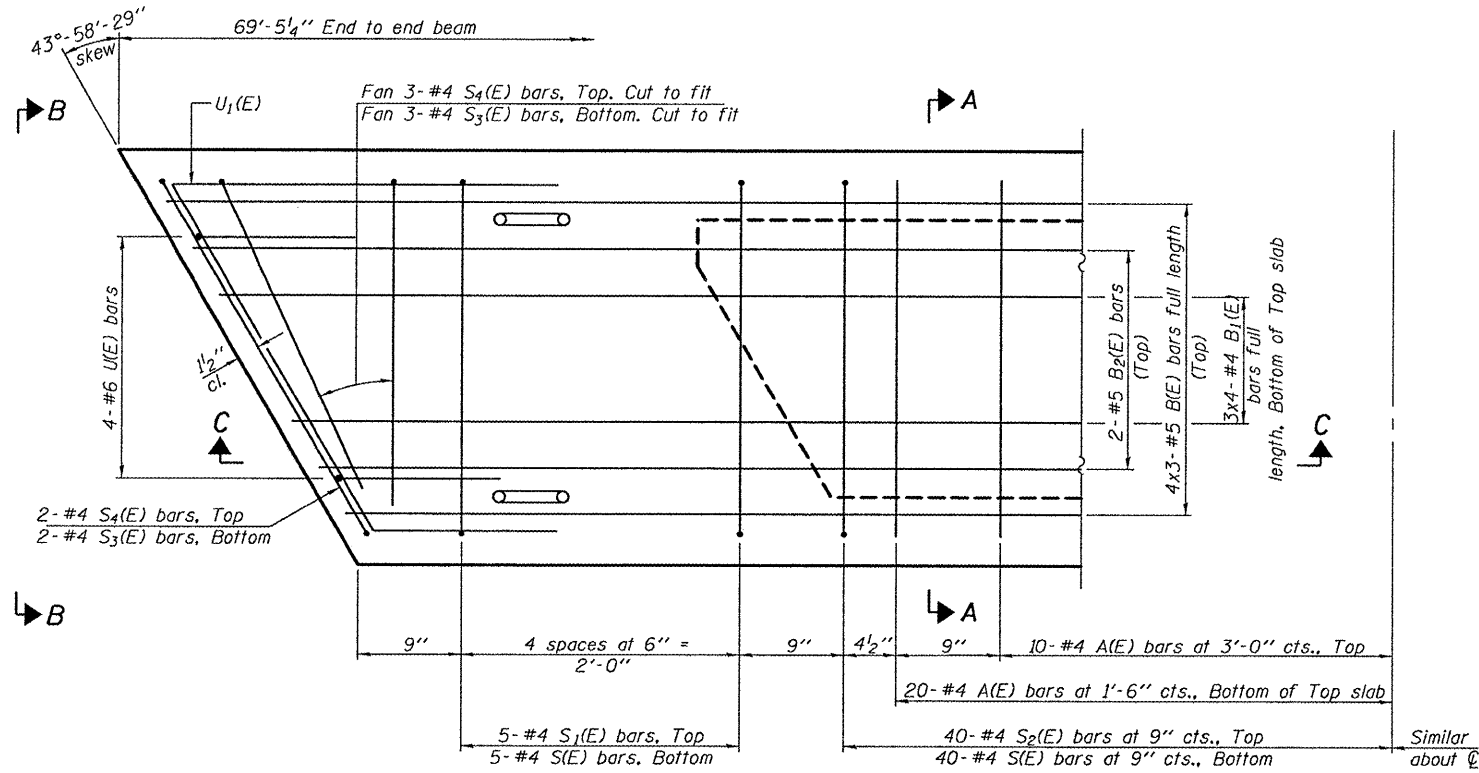


STATE OF ILLINOIS
DEPARTMENT OF TRANSPORTATION

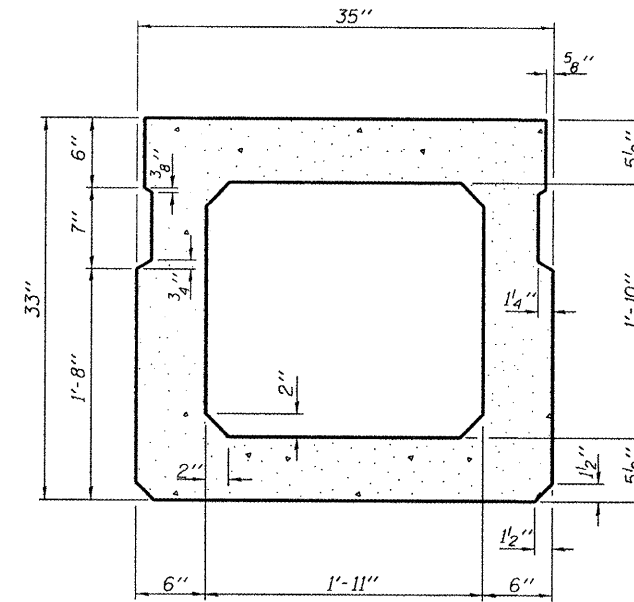


SECTION C-C

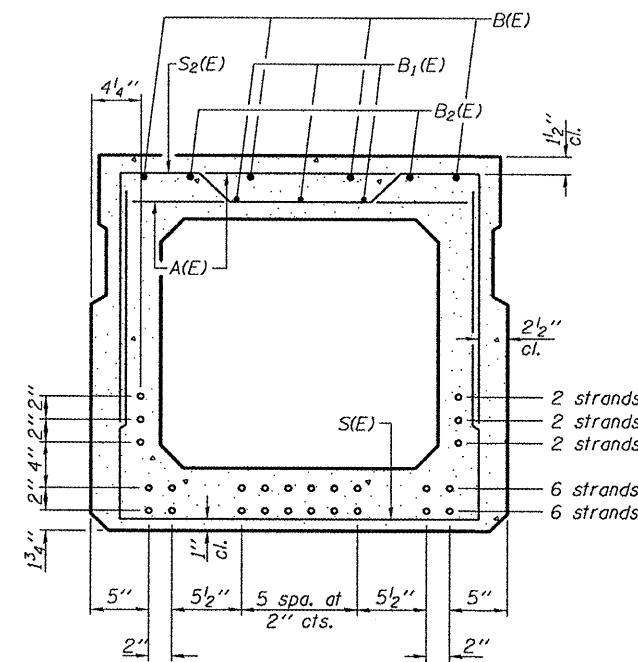


PLAN VIEW

Note: Spacing of S(E) and S2(E) bars may be adjusted up to 4" in the immediate area of the transverse tie diaphragms to miss the block outs for the transverse ties.

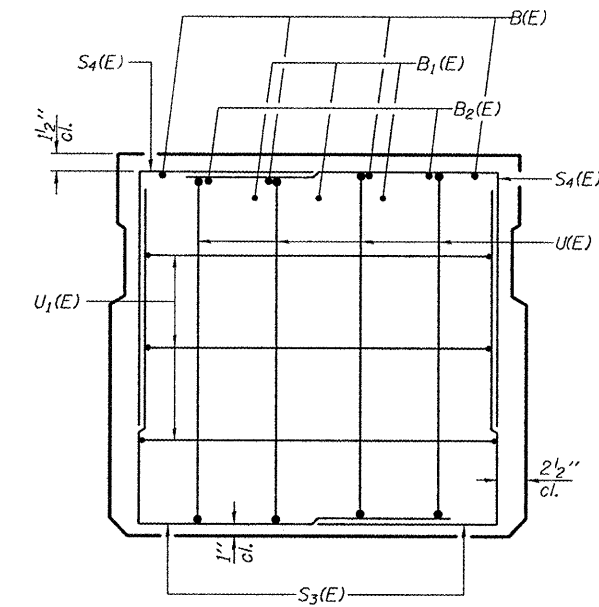


SECTION A-A
(Showing dimensions)



SECTION A-A

(Showing reinforcement and permissible strand locations)
Note: Place the number of strands specified in each row symmetrically about the centerline of beam in the permissible strand locations shown.



VIEW B-B

MIN. BAR LAPS

#4 = 1'-8"
#5 = 2'-2"

BAR LIST
ONE BEAM ONLY
(For information only)

Bar	No.	Size	Length	Shape
A(E)	60	#4	2'-6"	—
B(E)	12	#5	24'-7"	—
B1(E)	12	#4	18'-7"	—
B2(E)	4	#5	14'-0"	—
S(E)	90	#4	7'-4"	┌
S1(E)	10	#4	6'-2"	┌
S2(E)	80	#4	6'-5"	┌
S3(E)	10	#4	5'-10"	┌
S4(E)	10	#4	5'-3"	┌
U(E)	8	#6	4'-11"	┌
U1(E)	6	#4	8'-2"	┌

Note: See sheet 3 of 4 for additional details and Bill of Material.
Bars indicated thus 4 x 3-#5 etc. indicates 4 lines of bars with 3 lengths per line.

BEAM DETAILS
IL ROUTE 1 OVER ROCK CREEK
SN 035-0002

DESIGNED	ATH
CHECKED	GGE
DRAWN	Kyle M. Steffen
CHECKED	ATH GGE

FEBRUARY 11, 2010
EXAMINED *Carl P. ...*
PASSED *Ralph E. Anderson*
ENGINEER OF STRUCTURAL SERVICES
ENGINEER OF BRIDGES AND STRUCTURES

SHEET NO. 2 4 SHEETS	F.A.P. RTE. 782	SECTION 1151-2	COUNTY HARDIN	TOTAL SHEETS 8	SHEET NO. 5
	CONTRACT NO.				
FED. ROAD DIST. NO. ILLINOIS FED. AID PROJECT					