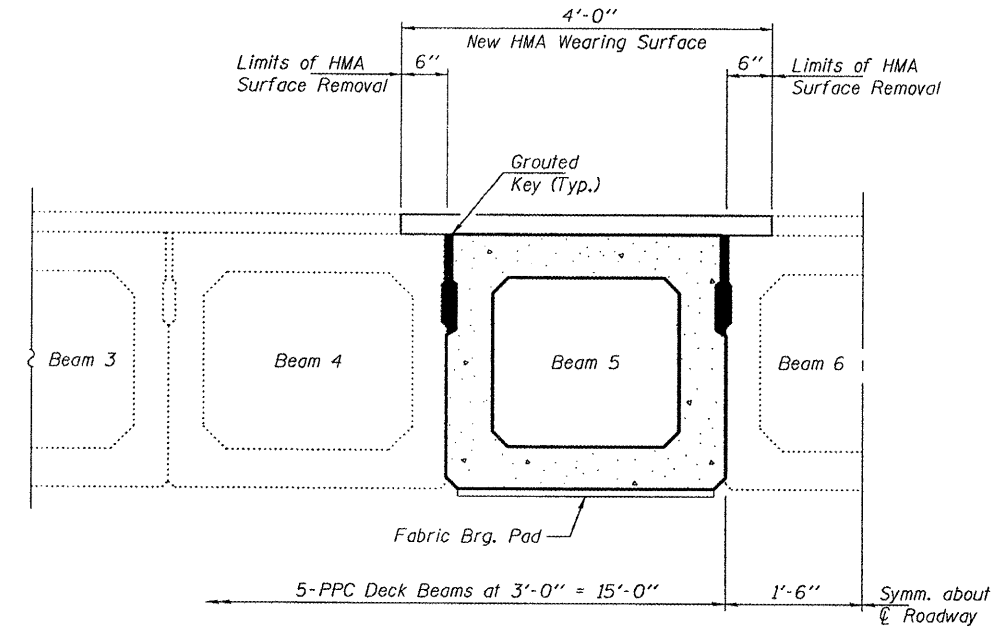
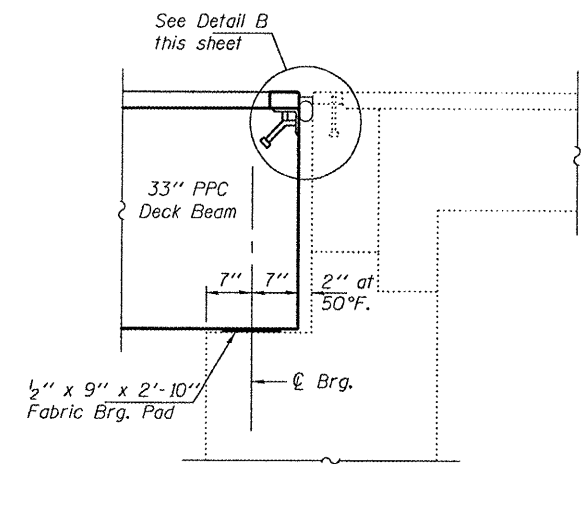
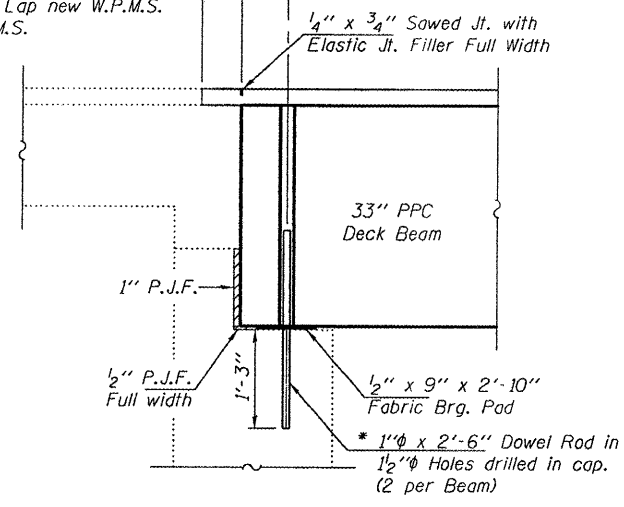
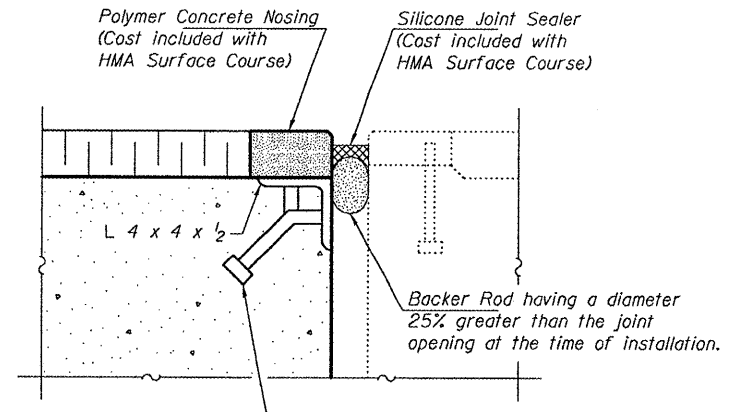


STATE OF ILLINOIS
DEPARTMENT OF TRANSPORTATION

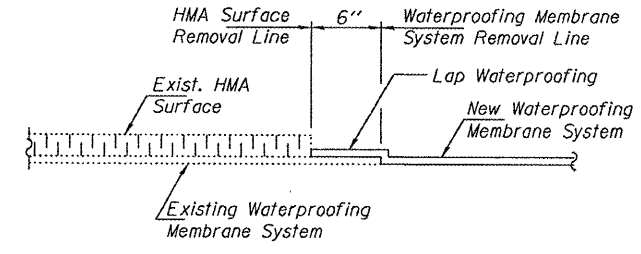
Limits of HMA Removal & Replacement. 6" 7" ϕ Brg.
Existing Water-Proofing Membrane System to remain. Lap new W.P.M.S. with existing W.P.M.S.



* Existing dowel rods are to be burned off, ground flush, and sealed with epoxy prior to placement of new beams. Cost included in Removal of Existing PPC Deck Beams. After beams have been erected holes shall be drilled into cap and dowel rods placed. Dowel holes shall be filled with non-shrink grout to top of beam and allowed to cure a minimum of 24 hours prior to grouting the shear keys.



$\frac{3}{4}$ " ϕ X 8" Granular or solid flux filled headed studs conforming to Article 1006.32 of the Std. Specs., automatically end welded. See sheet 3 of 4 for spacing.



DESIGNED	ATH	FEBRUARY 11, 2010
CHECKED	GGE	EXAMINED <i>R. Carl Proyer</i> ENGINEER OF STRUCTURAL SERVICES
DRAWN	Kyle M. Steffen	PASSED <i>Ralph E. Anderson</i> ENGINEER OF BRIDGES AND STRUCTURES
CHECKED	ATH GGE	

REPAIR DETAILS
IL ROUTE 1 OVER ROCK CREEK
SN 035-0002

SHEET NO. 4 4 SHEETS	F.A.P. RTE. 782	SECTION 115I-2	COUNTY HARDIN	TOTAL SHEETS 8	SHEET NO. 7
	CONTRACT NO.				
FED. ROAD DIST. NO. ILLINOIS FED. AID PROJECT					