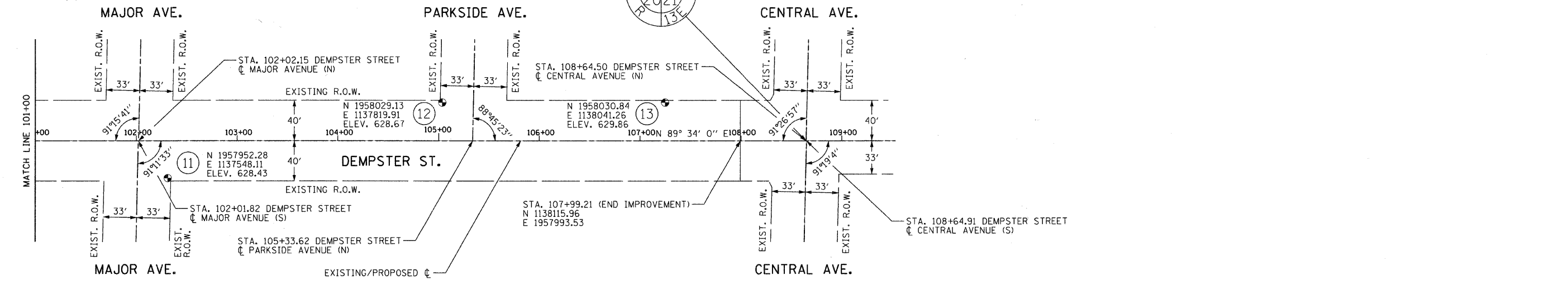
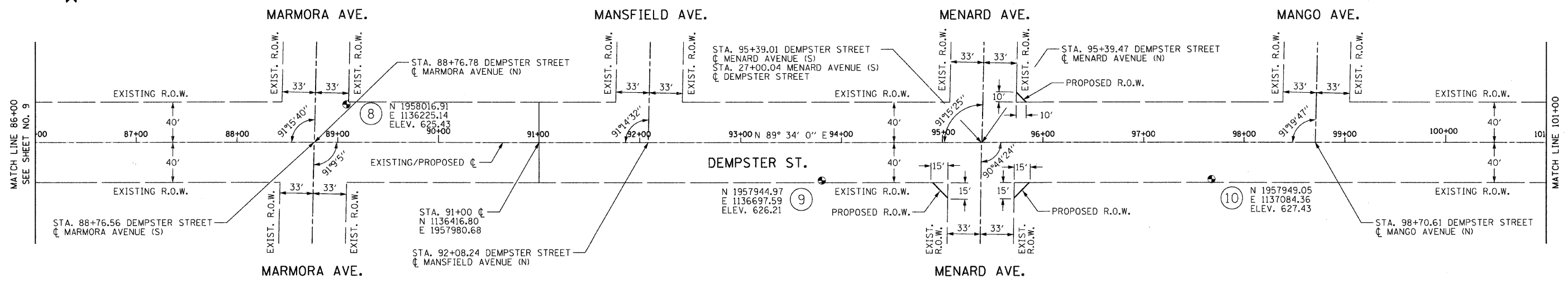


F.A.U. RTE.	SECTION	COUNTY	TOTAL SHEETS	SHEET NO.
1324	03-00097-01-PV	COOK	82	10
STA.	TO STA.			
FED. ROAD DIST. NO.	ILLINOIS	FED. AID PROJECT		
CONTRACT # 83971				



CONTROL POINTS/BENCHMARKS:

- | | | |
|---|---|---|
| <p>8. CROSS IN CONCRETE
NORTH 1958016.91
EASTING 1136225.14
ELEVATION 625.43
OFFSET TO PROP. ϕ 37.68'</p> <p>9. CROSS IN CONCRETE
NORTH 1957944.97
EASTING 1136697.59
ELEVATION 626.21
OFFSET TO PROP. ϕ 37.83'</p> | <p>10. CROSS IN CONCRETE
NORTH 1957949.05
EASTING 1137084.36
ELEVATION 627.43
OFFSET TO PROP. ϕ 36.68'</p> <p>11. CROSS IN CONCRETE
NORTH 1957952.28
EASTING 1137548.11
ELEVATION 628.43
OFFSET TO PROP. ϕ 36.96'</p> | <p>12. CROSS IN CONCRETE
NORTH 1958029.13
EASTING 1137819.91
ELEVATION 628.67
OFFSET TO PROP. ϕ 37.84'</p> <p>13. CROSS IN CONCRETE
NORTH 1958030.84
EASTING 1138041.26
ELEVATION 629.86
OFFSET TO PROP. ϕ 37.88'</p> |
|---|---|---|

REVISIONS	
NAME	DATE

ILLINOIS DEPARTMENT OF TRANSPORTATION
IL RTE 58 (DEMPSTER ST) IMPROVEMENTS
ALIGNMENT, TIES & BENCHMARKS

SCALE: 1" = 50'
DATE: 10-16-09
DRAWN BY: DMB
CHECKED BY: NKU

