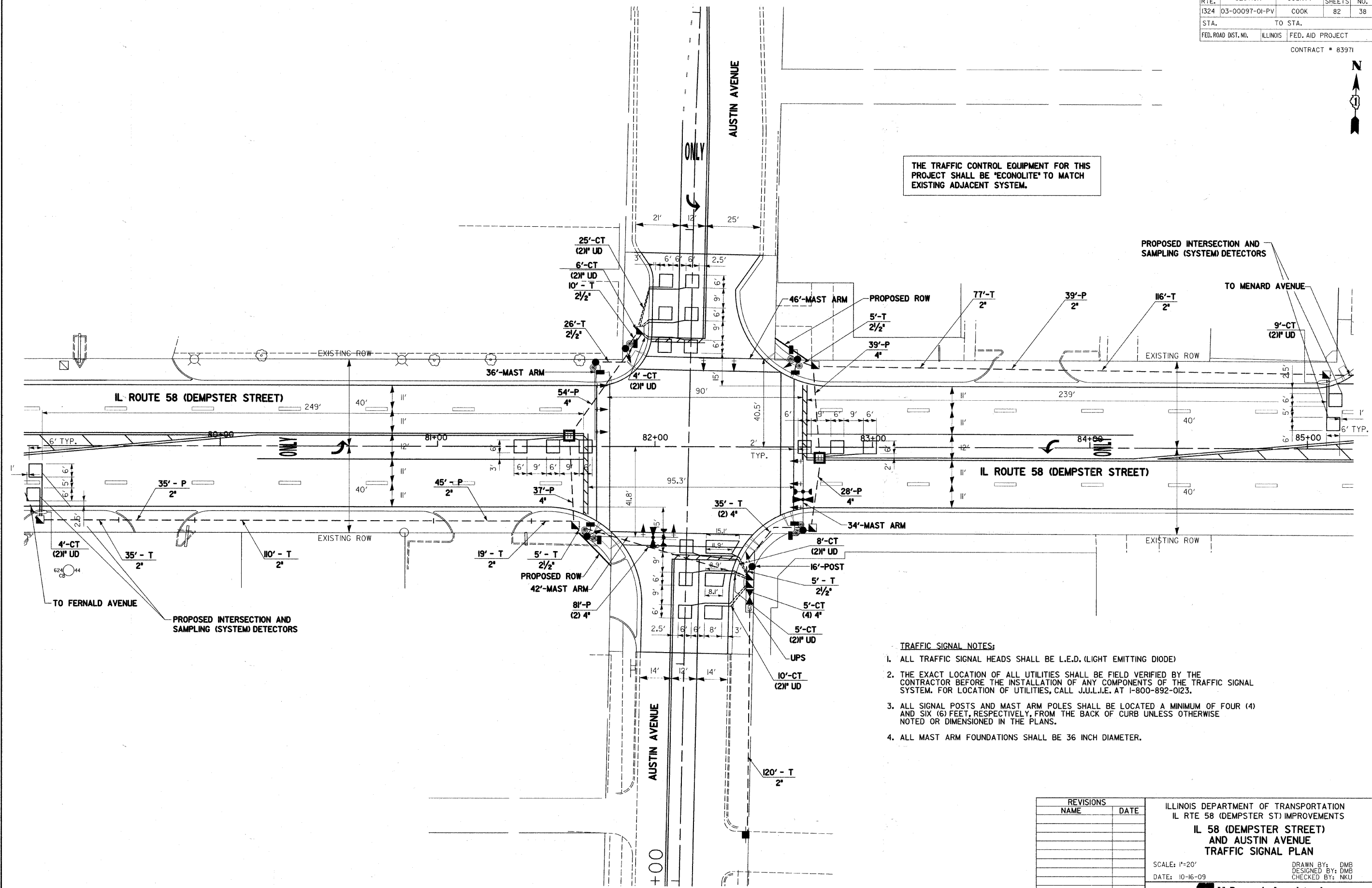




THE TRAFFIC CONTROL EQUIPMENT FOR THIS PROJECT SHALL BE 'ECONOLITE' TO MATCH EXISTING ADJACENT SYSTEM.



- TRAFFIC SIGNAL NOTES:
1. ALL TRAFFIC SIGNAL HEADS SHALL BE L.E.D. (LIGHT EMITTING DIODE)
 2. THE EXACT LOCATION OF ALL UTILITIES SHALL BE FIELD VERIFIED BY THE CONTRACTOR BEFORE THE INSTALLATION OF ANY COMPONENTS OF THE TRAFFIC SIGNAL SYSTEM. FOR LOCATION OF UTILITIES, CALL J.U.L.I.E. AT 1-800-892-0123.
 3. ALL SIGNAL POSTS AND MAST ARM POLES SHALL BE LOCATED A MINIMUM OF FOUR (4) AND SIX (6) FEET, RESPECTIVELY, FROM THE BACK OF CURB UNLESS OTHERWISE NOTED OR DIMENSIONED IN THE PLANS.
 4. ALL MAST ARM FOUNDATIONS SHALL BE 36 INCH DIAMETER.

REVISIONS	
NAME	DATE

ILLINOIS DEPARTMENT OF TRANSPORTATION
 IL RTE 58 (DEMPSTER ST) IMPROVEMENTS
**IL 58 (DEMPSTER STREET)
 AND AUSTIN AVENUE
 TRAFFIC SIGNAL PLAN**

SCALE: 1"=20'
 DATE: 10-16-09

DRAWN BY: DMB
 DESIGNED BY: DMB
 CHECKED BY: NKU

McDonough Associates Inc.
 Engineers / Architects