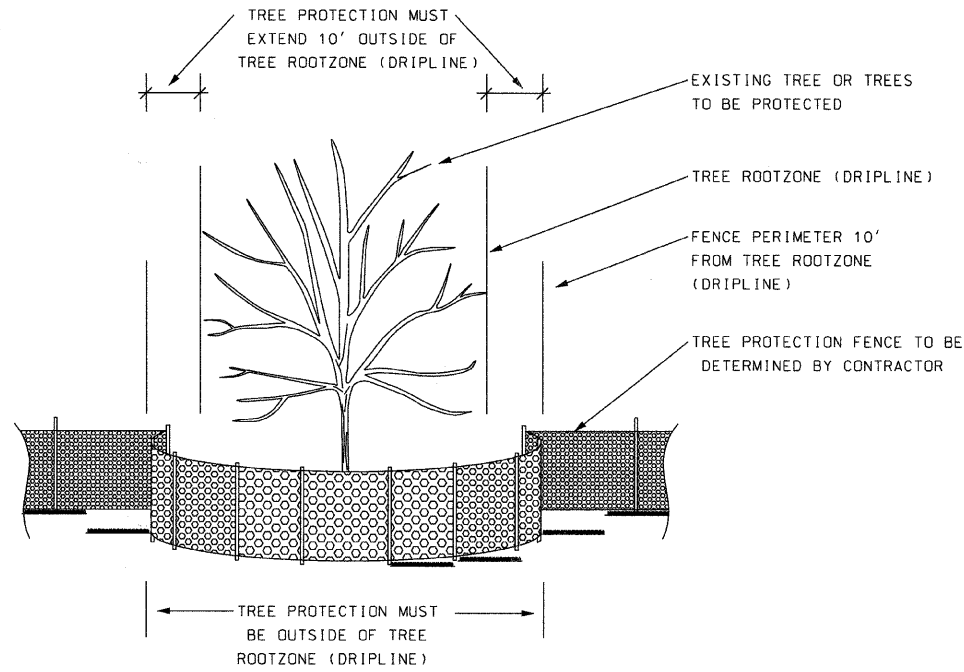
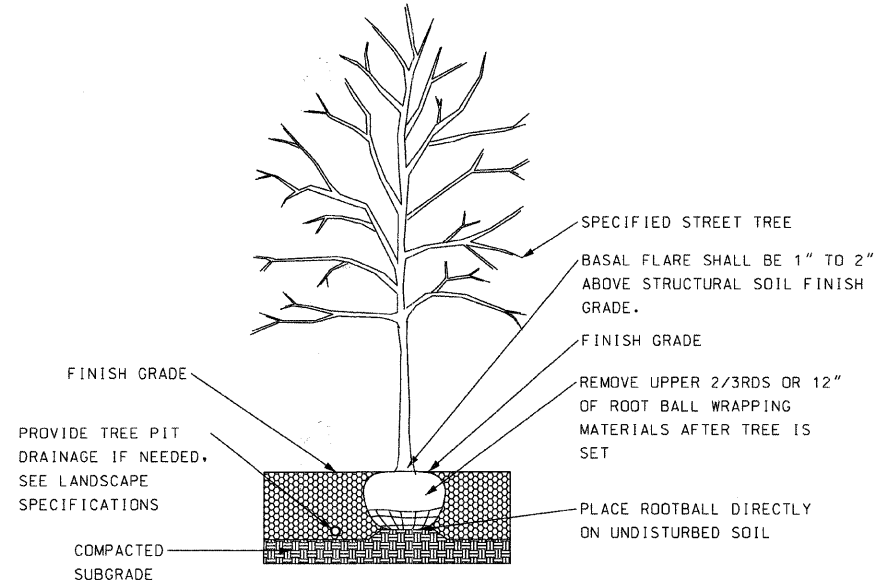


F.A.P. RYE	SECTION	COUNTY	TOTAL SHEETS	SHEET NO.
351	03-00037-01-PV	COOK	82	58
STA. _____		TO STA. _____		
FED. ROAD DIST. NO. _____		ILLINOIS FED. AID PROJECT		
CONTRACT # 83971				

- NOTES:
1. CONSTRUCTION FENCE TO INCLUDE PERIMETER OF TREE(S) PROTECTION FENCE WHERE THESE INTERSECT.
  2. MAINTAIN TREE PROTECTION AND FENCE WITHIN LIMIT FENCE FOR THE DURATION OF THE PROJECT.
  3. MAINTAIN FENCE IN PLACE FOR THE DURATION OF THE CONSTRUCTION. NO STAGING, TRENCHING, DIGGING, TRAFFICKING, RE-GRADING OR OTHER IMPACT IN TREE PROTECTION AREA
  4. CONTRACTOR MUST COORDINATE PLACEMENT OF EROSION CONTROL FENCE WITH TREE PROTECTION TO ENSURE MAXIMUM PROTECTION OF ROOTS, AND SOIL IN CANOPY ZONE
  5. MAINTAIN AREA INSIDE FENCE, INCLUDING TREE WATERING, MOWING, TRASH REMOVAL, DURING CONSTRUCTION PERIOD.

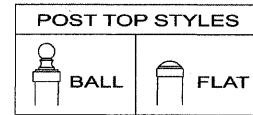
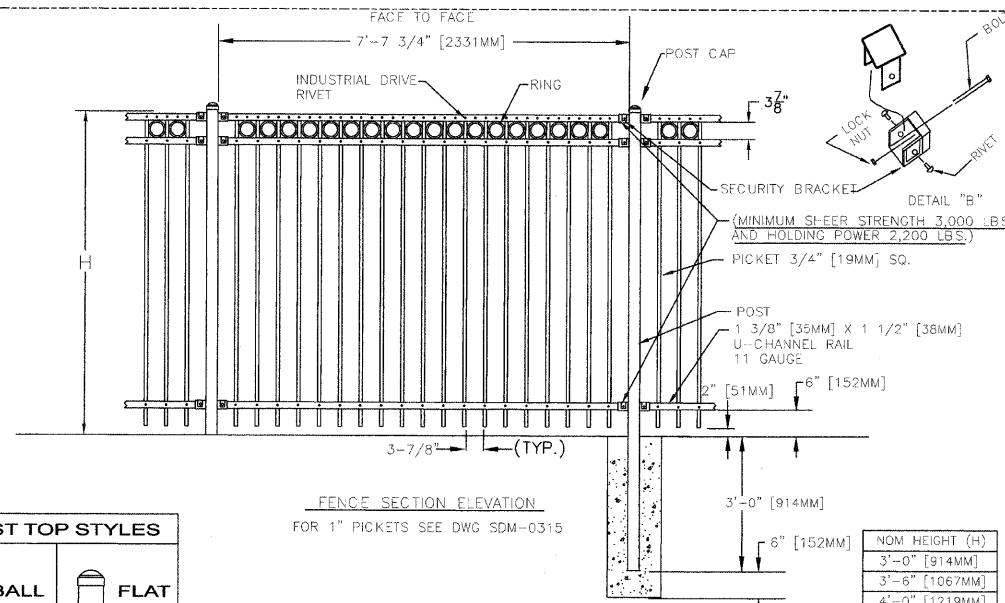


① TREE PROTECTION DETAIL  
N.T.S.



② TREE PLANTING DETAIL  
N.T.S.

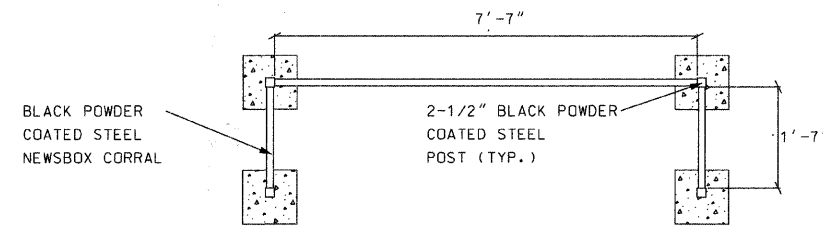
- LANDSCAPE NOTES:
- 1) SEE DRAWINGS FOR SITE INFORMATION. CALL DIGGER AT (312) 744-7000 PRIOR TO EXCAVATING.
  - 2) TREE PLANTING PIT MUST DRAIN AND BE FREE OF CONSTRUCTION SCRAP, TRASH, DEBRIS, AND NON-SOIL MATERIAL.
  - 3) MAINTAIN TREE AND ADJACENT LANDSCAPE THROUGH CONSTRUCTION PERIOD AND PER VILLAGE OF MORTON GROVE DIRECTION.
  - 4) ARBORIST TO PRUNE TREE TO REMOVE BROKEN AND CROSSING BRANCHES, AS DIRECTED BY OWNER.
  - 5) WATER IN TREE DURING BACKFILLING PROCESS.
  - 6) TREE SHALL REMAIN ALIGNED AND PLUMB AFTER WATERING AND SETTLING. TOP OF ROOT BALL SHALL EXIST 1"-2" ABOVE FINISHED GRADE AND BELOW TREE GRATE. CONTRACTOR SHALL MEET FINISHED GRADE BELOW TREE GRATE WITH BACKFILL. CONTRACTOR SHALL RESET TREE IF TREE IS NOT IN CORRECT POSITION THREE MONTHS FOLLOWING INSTALLATION. NO DEADEN OR BRICKS SHALL BE USED TO STABILIZE TREE.
  - 7) CONTRACTOR SHALL NOT SHAVE ROOT BALLS.
  - 8) PROTECT TREE BALLS FROM HEAT AND DESSICATION DURING THE INSTALLATION PROCESS.
  - 9) COORDINATE TREE PLANTING WITH OTHER INSTALLATION SCHEDULES.
  - 10) IF TREES ARE INSTALLED PRIOR TO SIDEWALK, CONTRACTOR IS TO SURVEY TREES AFTER INSTALLATION TO ENSURE THEY WILL BE IN PROPER POSITION AFTER THIS SIDEWALK AND TREE FRAME AND GRATE INSTALLATION.
  - 11) REFER TO GENERAL NOTES AND ORDINANCE REQUIREMENTS.



- NOTES:
1. SPECIFICATIONS SHOWN CAN BE CHANGED BY THE MANUFACTURER ONLY.
  2. FOOTING WIDTH TO BE (4)X POST WIDTH.
  3. OWNER'S REPRESENTATIVE TO PICK POST TOP SYLE PRIOR TO INSTALLATION.

NOM HEIGHT (H)
3'-0" [914MM]
3'-6" [1067MM]
4'-0" [1219MM]
5'-0" [1524MM]
6'-0" [1829MM]
7'-0" [2134MM]
8'-0" [2438MM]

- NOTES:
1. DIMENSIONS FOR REFERENCE ONLY.
  2. SEE DETAIL 3 THIS SHEET FOR SPECIFIC FENCE DIMENSIONS.



④ BLACK POWDER COATED STEEL NEWSBOX CORRAL, PLAN  
N.T.S.

③ BLACK POWDER COATED STEEL NEWSBOX CORRAL, SECTION  
N.T.S.

L-2.2  
SHEET NUMBER

REVISIONS	NAME	DATE	ILLINOIS DEPARTMENT OF TRANSPORTATION IL RTE 58 (DEMPSTER ST) IMPROVEMENTS  TREE PROTECTION AND PLANTING & ALTERNATE PLANTING DETAILS
			SCALE: NOT TO SCALE DATE: 10-16-09
			DRAWN BY: TH CHECKED BY: TG
Terry Guen Design Associates, Inc. <small>Landscape Architecture - Urban Design - Planning - Analysis Chicago, Illinois</small>			McDonough Associates Inc. <small>Engineers / Architects</small>

FILES  
DATE  
STAMP