

Route No.	Section	County	Total Sheets	Sheet No.
5455/5445	09-00105-00-RS	OGLE	10	1
Illinois Project: 5061(013)				
Contract No: 85490				

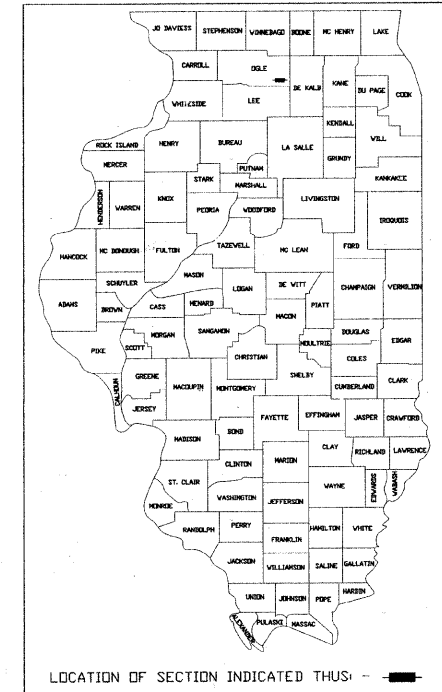
**STATE OF ILLINOIS**  
**DEPARTMENT OF TRANSPORTATION**  
**DIVISION OF HIGHWAYS**  
**PLANS FOR PROPOSED**  
**AMERICAN RECOVERY REINVESTMENT ACT**  
**FEDERAL AND LOCAL FUNDING**  
**STREET REHABILITATION/RESURFACING PROJECT**  
**FAU 5455 (LINCOLN HWY/WASHINGTON ST) - 1st Ave to 5th Ave/**  
**FAU 5445 (4th Avenue) - 6th St to Main St**  
**SECTION: 09-00105-00-RS**  
**PROJECT: ARA - 5061(013)**  
**JOB NO: C-92-187-09**  
**CITY OF ROCHELLE**  
**OGLE COUNTY**  
**CONTRACT NO: 85490**

**INDEX OF SHEETS**

DESCRIPTION	SHEET NO
Title Sheet	1
General Note, Summary of Quantities, Typicals	2
Washington St - 1st Av. to UPRR	3
Washington St/Lincoln Hwy - UPRR to 4th Av.	4
Lincoln Hwy - 4th Av to 5th Av	5
4th Av. - 6th St. to Main St.	6
Cross Sections	7
Details	8
Details	9
Traffic Control - Detour Route	10

**STANDARDS**

NUMBER	TITLE
280001-05	Tempory Erosion Control Systems
602401-02	Manhole, Type A
602601-02	Precast Reinforced Concrete Flat Slab Top
602701-02	Manhole Steps
604001-03	Frame and Lids, Type 1
606001-04	Concrete Curb Type B and Combination Concrete Curb and Gutter
701006-03	Off-Rd Operations, 2L, 2W, 15' (4.5m) to 24" (600mm) From Pavement Edge
701011-02	Off-Rd Moving Operations 2L, 2W, Day Only
701301-03	Lane Closure, 2L, 2W Short Time Operations
701501-05	Urban Lane Closure 2L, 2W, Undivided
701801-04	Lane Closure Multilane 1W or 2W Crosswalk or Sidewalk Closure
701901-01	Traffic Control Devices
720011-01	Metal Post for Signs, Markers & Delineators
728001-01	Telescoping Steel Sign Support
729001-01	Applications of Types A & B Metal Post (For Signs & Markers)
780001-02	Typical Pavement Markings



**PRINTED BY AUTHORITY**  
**OF THE STATE OF ILLINOIS**



**Location Map**  
 Not to Scale

Gross Length of Improvements = 2164 Feet or 0.41 Miles  
 Net Length of Improvements = 2059 Feet or 0.39 Miles

I, SAMUEL C. TESREAU, A FULLY REGISTERED PROFESSIONAL ENGINEER UNDER THE LAWS OF THE STATE OF ILLINOIS, HEREBY CERTIFY THAT THIS PLAN, SPECIFICATION OR REPORT WAS PREPARED BY MYSELF OR UNDER MY DIRECT SUPERVISION

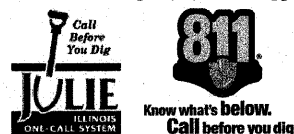
Signed: *Samuel C. Tesreau*  
 SAMUEL C. TESREAU, P.E.  
 CITY ENGINEER  
 LICENSE EXPIRES 11/30/2011



Date: 3/23/2010

AGENCY RESPONSIBLE FOR LETTING	
Approved	<u>3-24</u> 2010
	<i>Ken Allstate</i> City Manager, City of Rochelle
Passed	<u>MARCH 25</u> 2010
	<i>[Signature]</i> District 2 Engineer of Local Roads
Released for Bid Based on Limited Review	<u>MARCH 25</u> 2010
	<i>[Signature]</i> Deputy Director of Highways Region 2 Engineer

**CALL BEFORE YOU DIG**  
**CALL 811 or 1-800-892-0123**  
 48 hours/2 working days prior to digging.



**LINCOLN HIGHWAY/WASHINGTON STREET:**  
**ADT = 4800 (2010) <1% TRUCKS**  
**URBAN MINOR ARTERIAL**

**4TH AVENUE:**  
**ADT = 2600 (2010) <1% TRUCKS**  
**COLLECTOR**

**City of Rochelle**  
**Engineering Division**  
 417 N. 6th St. Rochelle, IL 61068

GENERAL NOTES:

Specifications for this project shall be IDOT "Standard Specifications for Road and Bridge Construction", latest edition, IDOT "Reoccurring Special Provisions", latest edition, and City of Rochelle Special Provisions unless otherwise approved by the Engineer. All reference to "Engineer" shall mean the City Engineer or his authorized representative.

Any construction or work indicated in the plans or specified in the proposal shall be completed by the Contractor. Any construction or work not included in a pay item shall be incidental to the project contract cost. quantities shown are estimates and for information only. The contractor shall verify all quantities.

Contractor shall be required to file a Notice of Intent with the I.E.P.A. for N.P.D.E.S. storm water regulations as well as the S.W.P.P.P. Notice of Termination shall be filed once the project has been accepted by the City Engineer. Cost and fees associated with this item shall be considered incidental to the contract.

Call J.U.L.I.E. (1-800-892-0123) for utility location information prior to excavation. The location for existing utilities as shown on the plans are approximate and based on best information available, but not guaranteed. It shall be the Contractor's responsibility to ascertain their exact location from the utility companies and by field inspection. The contractor shall verify all underground utility locations in the field. The Contractor shall be responsible for "potholing" or locating utilities both vertical and horizontal, within the project limits or along any sewer trench, before installation of any proposed improvements to determine if conflicts exist with said improvements. The contractor shall be responsible for contacting the utility company for any adjustments. This item shall be considered incidental to the project contract.

Protect all overhead and underground utility lines during construction. All Electric, Utility pole or street light, Water, and Sanitary Sewer adjustments and/or relocations will be performed by Rochelle Municipal Utilities unless otherwise directed by the Engineer.

Right-of-way line and property lines indicated on the plans are approximate. The contractor shall carefully preserve all existing property markers until an authorized surveyor has referenced their location. Property markers damaged by the contractor shall be replaced at the expense of the contractor. All property corner monumentation shall be restored to the condition existing before construction began.

Top of curb (TOC) elevations indicated on the plans are to the top back of curb.

EARTHWORK, TRENCH/BACKFILL, SUBGRADE AND PAVEMENT PREPARATION NOTES:

All excess earth excavation or unsuitable material shall be disposed of by the contractor off-site in accordance with IDOT requirements. This item shall be considered incidental to applicable pay items.

The upper 12 inches of subgrade below pavements, or new fills shall be brought to within ±2% of optimum moisture and compacted to not less than 90% of maximum density. Optimum moisture is estimated to be in the range of 8% to 9% during cool or wet seasons, therefore it may be necessary to disk and aerate the existing upper 12 inches of soil to achieve optimum moisture content.

No fill or backfill material shall be placed over frozen, muddy, or otherwise unstable material.

All fill or backfill shall be placed beneath exterior paved areas shall be compacted to not less than 90% of maximum density.

All fill and backfill shall be placed in lifts not greater than 8 inches in thickness, loose measurement, prior to compaction.

Areas of unsuitable and unstable subgrade and aggregate base course shall be removed, disposed of and treated in accordance with the Special Provisions and as directed by the Engineer.

All density measurements referenced above shall be in accordance with ASTM designation D1557-78 modified proctor method.

Contractor is responsible for maintaining a final grade that is suitable for drainage, seeding and landscaping (minimum of 6" of topsoil). Contractor shall restore all disturbed areas to preconstruction conditions or better as directed by the Engineer.

Contractor shall protect and prevent damage to existing trees which are not indicated on the plans to be removed.

The contractor shall catalog, document and remove existing street signs and post and stockpile them at a safe location to prevent damage and theft. This work shall be considered incidental to the project. If signs and posts are not suitable for reuse the contractor will provide and install new street signs as directed by the Engineer. Cost for this work shall be considered incidental to the project contract.

If existing brick or other pavement base course is encountered during HMA surface removal operations the depth and quantity of HMA surface removal shall be adjusted in accordance with section 440 of the IDOT Standard Specifications.

EROSION AND SEDIMENTATION CONTROL NOTES:

Erosion control practices shall be constructed in accordance with the IDOT Standard Specifications, the Standards for Soil Erosion and Sediment Control as contained in IEPA/WPC/ 87-012 or current edition and according to Procedures and Standards for Urban Soil Erosion and Sedimentation Control in Illinois, latest edition, and according to the Standards of the City of Rochelle.

A temporary sediment barrier of straw bales, filter fabric, or other approved barrier shall be placed around each storm sewer inlet potentially impacted by work. This work shall be considered incidental to the project contract cost. Fabric filter fences or straw bales shall be placed around any stock pile with more than 10 cu. yd. of material. At the end of each work day, the contractor shall sweep or clean (not flush) and dispose of any construction soil material and debris from the street.

The Engineer shall determine the adequacy of the contractor's erosion control efforts. The Engineer or his designated representative shall have full authority to suspend or limit the contractor's operations pending adequate performance of erosion control methods.

The contractor shall inspect erosion control structures daily and immediately after any major storm. All mud and debris shall be swept clean from roadways at the end of each working day or as directed by the Engineer. This item shall be considered incidental to the contract.

Refer to the Special Provisions for further requirements of contract pay items.

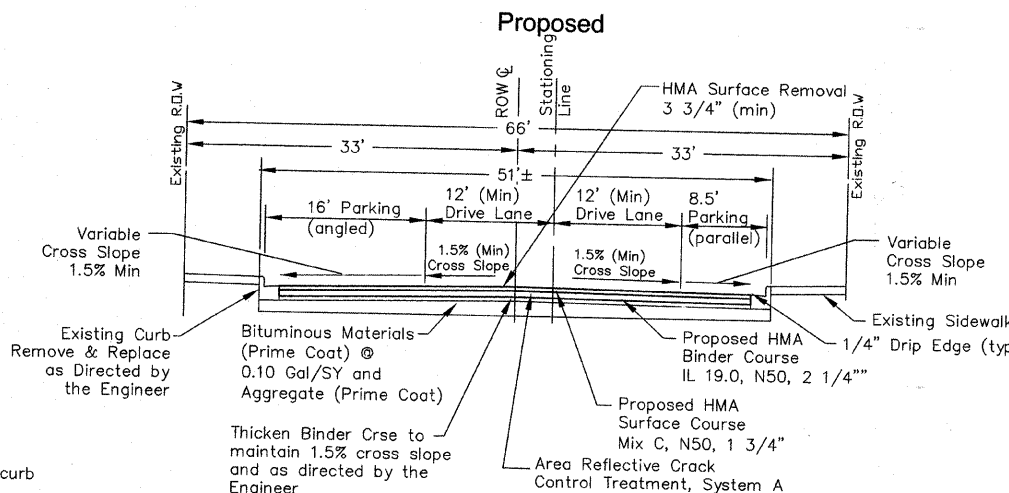
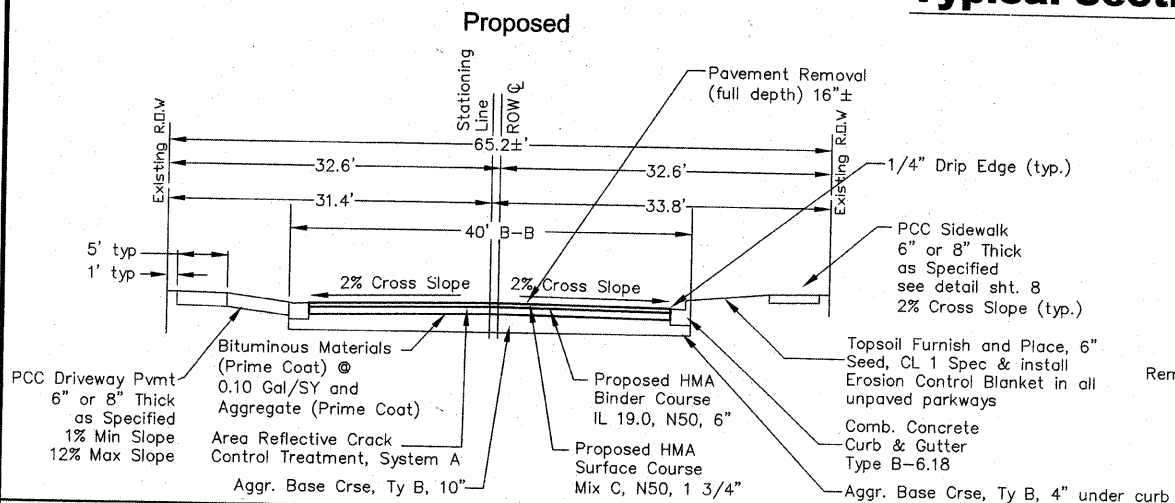
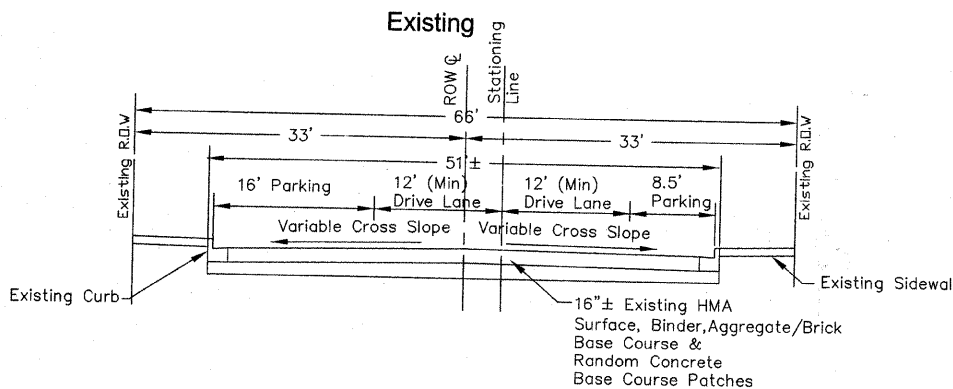
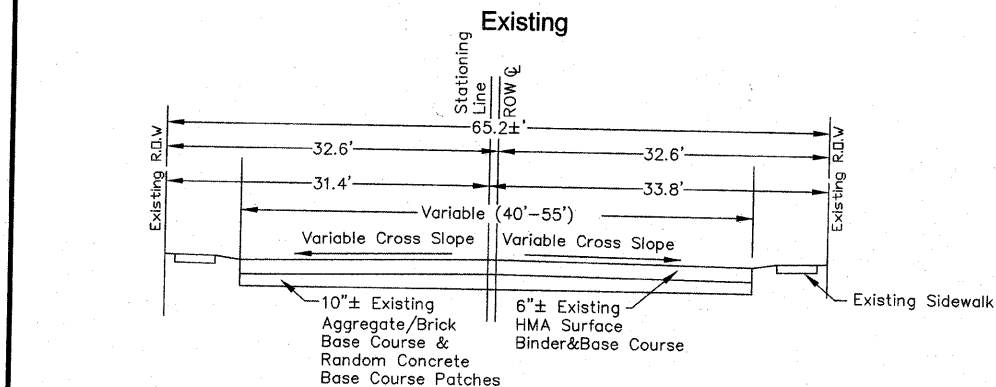
SUMMARY OF QUANTITIES CONSTRUCTION TYPE CODE: Y051

Table with 4 columns: Item Number, Items, Unit, Quantity. Lists various construction items such as Earth Excavation, Trenchbackfill, and various pavement and utility items with their respective units and quantities.

Sta 99+80 to Sta 104+20

Sta 104+20 to Sta 115+50 & Sta 400+00 to Sta 406+00

Typical Sections



HMA Chart table with columns: Mixture Uses(s), Surface, Binder. Lists technical specifications for HMA mixtures.

Manhole, Inlet & Water Valve Adjustment Schedule table with columns: Sta, Type. Lists manhole and valve types and their corresponding stationing.

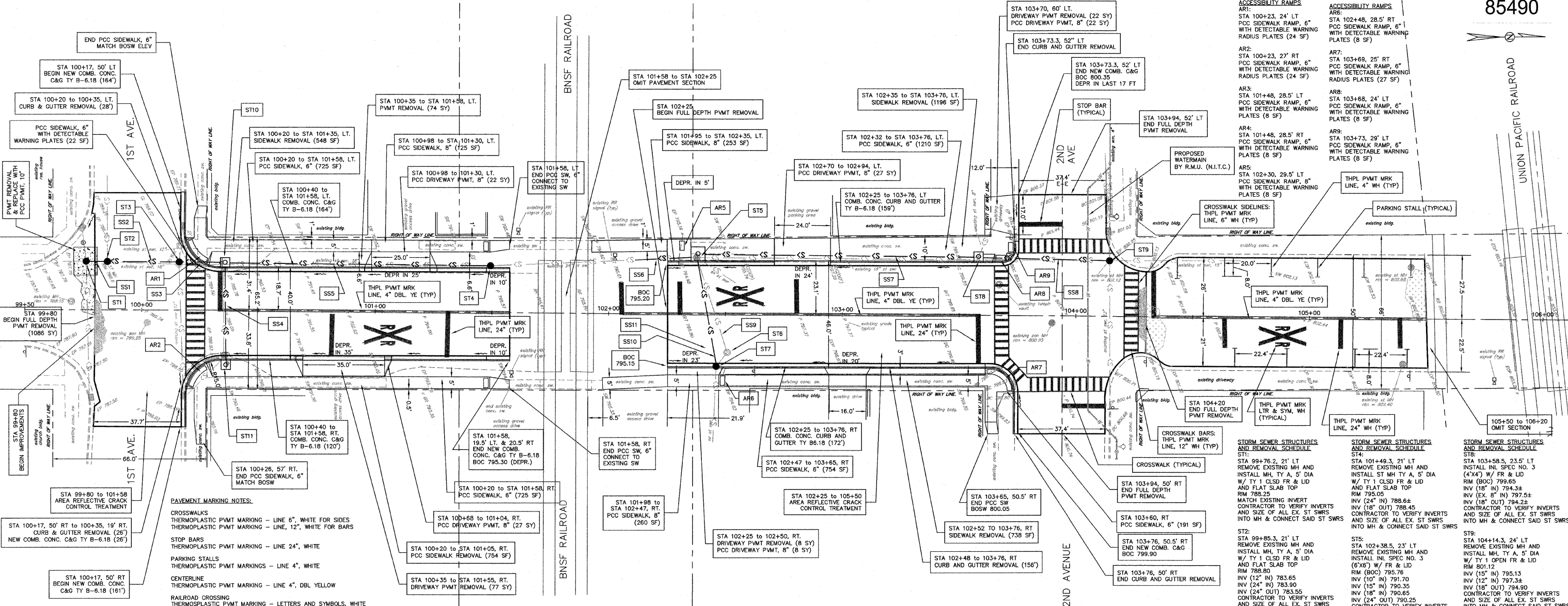
City of Rochelle Engineering Division 417 N. 6th St. Rochelle, IL 61068

2009 ARRA Stimulus Funds City of Rochelle Street Rehabilitation/Resurfacing Project Lincoln Hwy/Washington St - 1st Av to 5th Av incl 4th Av Section #09-00105-00-RS

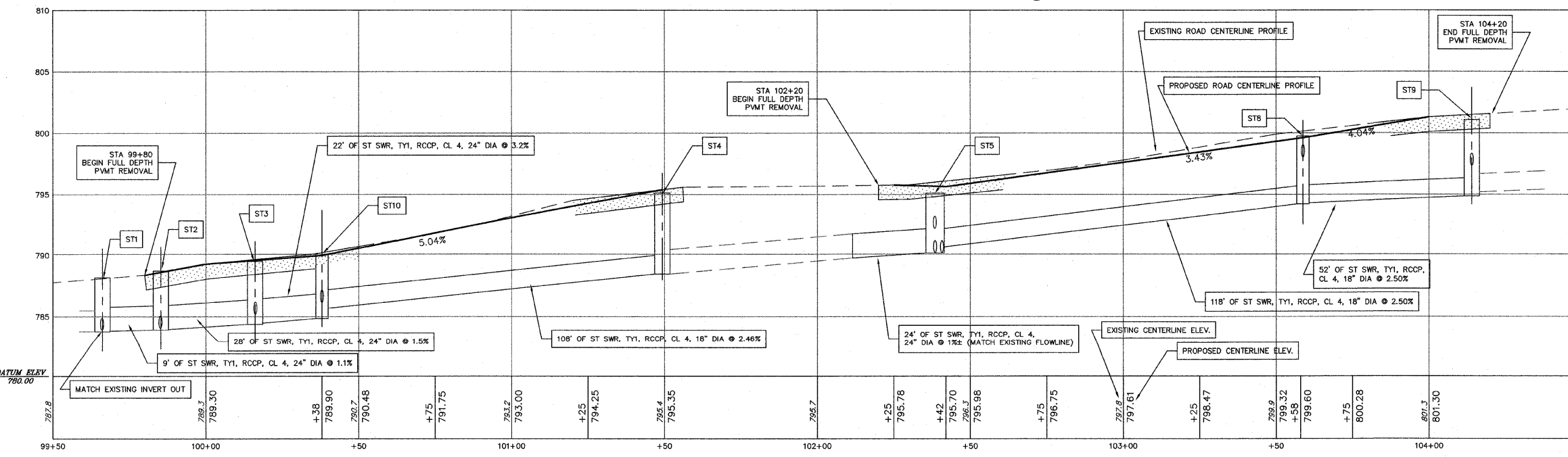
REVISIONS table with columns: REV, DESCRIPTION, DATE, APPROVED. Table for tracking project changes.

General Notes, Quantities, Typ Sections

DRAWN BY: CW, CHECKED BY: ST, DATE: 3/22/10, SCALE: HORZ SCALE: NA, SHEET: 2 of 10



### Washington St



**STORM SEWER REMOVAL AND INSTALLATION SCHEDULE**

**ST1:**  
 STA 99+76.2, 21' LT  
 REMOVE EXISTING MH AND  
 INSTALL ST MH TY A, 5' DIA  
 W/ TY 1 CLSD FR & LID  
 AND FLAT SLAB TOP  
 RIM (BOC) 799.65  
 INV (18" IN) 794.3  
 INV (24" OUT) 798.64  
 CONTRACTOR TO VERIFY INVERTS  
 AND SIZE OF ALL EX. ST SWRS  
 INTO MH & CONNECT SAID ST SWRS

**ST2:**  
 STA 99+85.3, 21' LT  
 REMOVE EXISTING MH AND  
 INSTALL MH, TY A, 5' DIA  
 W/ TY 1 CLSD FR & LID  
 AND FLAT SLAB TOP  
 RIM (BOC) 795.76  
 INV (12" IN) 783.65  
 INV (24" IN) 783.90  
 INV (18" OUT) 790.35  
 INV (24" OUT) 783.55  
 CONTRACTOR TO VERIFY INVERTS  
 AND SIZE OF ALL EX. ST SWRS  
 INTO MH & CONNECT SAID ST SWRS

**ST3:**  
 STA 100+16.1, 21' LT  
 REMOVE EXISTING MH AND  
 INSTALL ST MH TY A, 5' DIA  
 W/ TY 1 CLSD FR & LID  
 AND FLAT SLAB TOP  
 RIM (BOC) 789.95  
 INV (12" IN) 785.1  
 INV (18" IN) 784.30  
 INV (18" OUT) 784.40  
 CONTRACTOR TO VERIFY INVERTS  
 AND SIZE OF ALL EX. ST SWRS  
 INTO MH & CONNECT SAID ST SWRS

**ST4:**  
 STA 102+20, 8' RT  
 REMOVE EXISTING MH  
 AND FLAT SLAB TOP  
 RIM (BOC) 795.50  
 INV (12" IN) 785.1  
 INV (18" IN) 784.30  
 INV (18" OUT) 784.40  
 CONTRACTOR TO VERIFY INVERTS  
 AND SIZE OF ALL EX. ST SWRS  
 INTO MH & CONNECT SAID ST SWRS

**ST5:**  
 STA 102+48, 22' RT  
 REMOVE EXISTING MH AND  
 INSTALL MH, TY A, 5' DIA  
 W/ TY 1 OPEN FR & LID  
 AND FLAT SLAB TOP  
 RIM (BOC) 794.85  
 INV (10" IN) 791.30  
 INV (12" OUT) 791.25  
 CONTRACTOR TO VERIFY INVERTS  
 AND SIZE OF ALL EX. ST SWRS  
 INTO MH & CONNECT SAID ST SWRS

**ST6:**  
 STA 102+50.8, 16.3' RT  
 REMOVE EXISTING MH  
 AND FLAT SLAB TOP  
 RIM (BOC) 789.95  
 INV (18" IN) 785.70  
 INV (12" IN) 786.20  
 INV (24" OUT) 794.83  
 CONTRACTOR TO VERIFY INVERTS  
 AND SIZE OF ALL EX. ST SWRS  
 INTO MH & CONNECT SAID ST SWRS

**ST7:**  
 STA 102+48, 22' RT  
 REMOVE EXISTING MH AND  
 INSTALL MH, TY A, 5' DIA  
 W/ TY 1 OPEN FR & LID  
 AND FLAT SLAB TOP  
 RIM (BOC) 794.85  
 INV (10" IN) 791.30  
 INV (12" OUT) 791.25  
 CONTRACTOR TO VERIFY INVERTS  
 AND SIZE OF ALL EX. ST SWRS  
 INTO MH & CONNECT SAID ST SWRS

**ST8:**  
 STA 102+58.5, 23.5' LT  
 REMOVE EXISTING MH AND  
 INSTALL MH, TY A, 5' DIA  
 W/ TY 1 OPEN FR & LID  
 AND FLAT SLAB TOP  
 RIM (BOC) 794.85  
 INV (12" IN) 791.30  
 INV (12" OUT) 791.25  
 CONTRACTOR TO VERIFY INVERTS  
 AND SIZE OF ALL EX. ST SWRS  
 INTO MH & CONNECT SAID ST SWRS

**ST9:**  
 STA 104+20, 18.5' LT  
 REMOVE EXISTING MH AND  
 INSTALL INL. SPEC NO. 3  
 (4'x4') W/ FR & LID  
 RIM (BOC) 789.90  
 INV (12" OUT) 786.70  
 CONTRACTOR TO VERIFY INVERTS  
 AND SIZE OF ALL EX. ST SWRS  
 INTO MH & CONNECT SAID ST SWRS

**ST10:**  
 STA 100+38, 21.5' RT  
 REMOVE EXISTING MH AND  
 INSTALL INL. SPEC NO. 3  
 (4'x4') W/ FR & LID  
 RIM (BOC) 789.90  
 INV (12" OUT) 786.70  
 CONTRACTOR TO VERIFY INVERTS  
 AND SIZE OF ALL EX. ST SWRS  
 INTO MH & CONNECT SAID ST SWRS

**ST11:**  
 STA 104+14.3, 24' LT  
 REMOVE EXISTING MH AND  
 INSTALL MH, TY A, 5' DIA  
 W/ TY 1 OPEN FR & LID  
 AND FLAT SLAB TOP  
 RIM (BOC) 794.85  
 INV (10" IN) 791.30  
 INV (12" OUT) 791.25  
 CONTRACTOR TO VERIFY INVERTS  
 AND SIZE OF ALL EX. ST SWRS  
 INTO MH & CONNECT SAID ST SWRS

**City of Rochelle Engineering Division**  
 417 N. 6th St. Rochelle, IL 61068

**PROJECT:** 2009 ARRA Stimulus Funds  
 City of Rochelle Street Rehabilitation/Resurfacing Project  
 Lincoln Hwy/Washington St - 1st Av to 5th Av incl 4th Av  
 Section #09-00105-00-RS

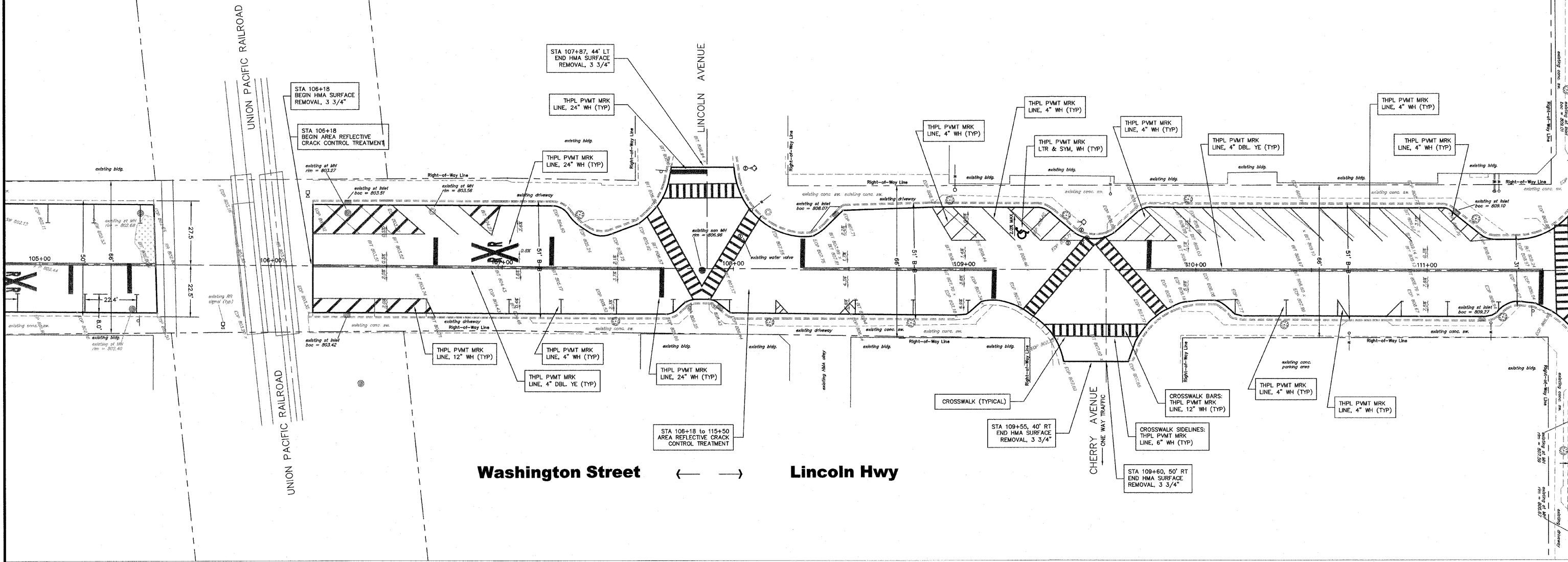
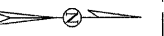
REV	DESCRIPTION	DATE	APPROVED

**DRAWING:** Washington Street - 1st Av to UPRR

**DRAWN BY:** CW  
**CHECKED BY:** ST  
**DATE:** 3/22/10

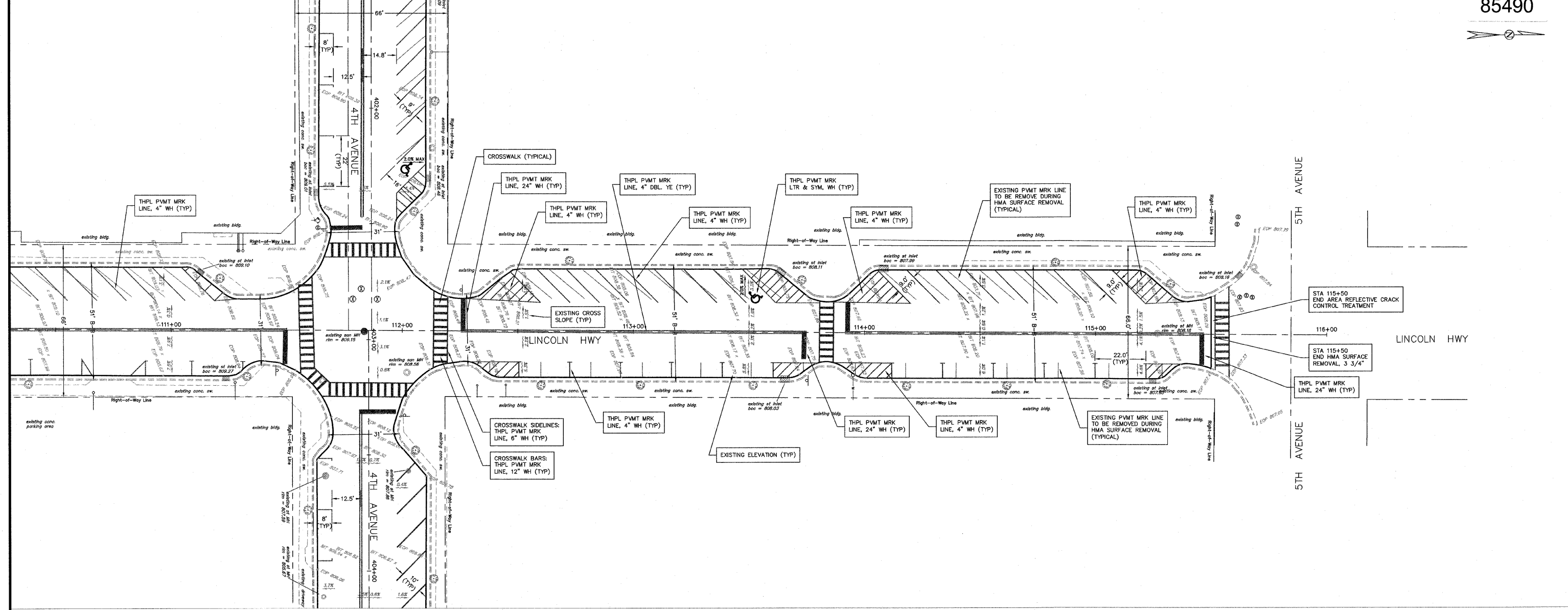
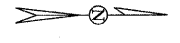
**SCALE:** 1" = 20'  
**VERT SCALE:** NA

**SHEET:** 3 of 10

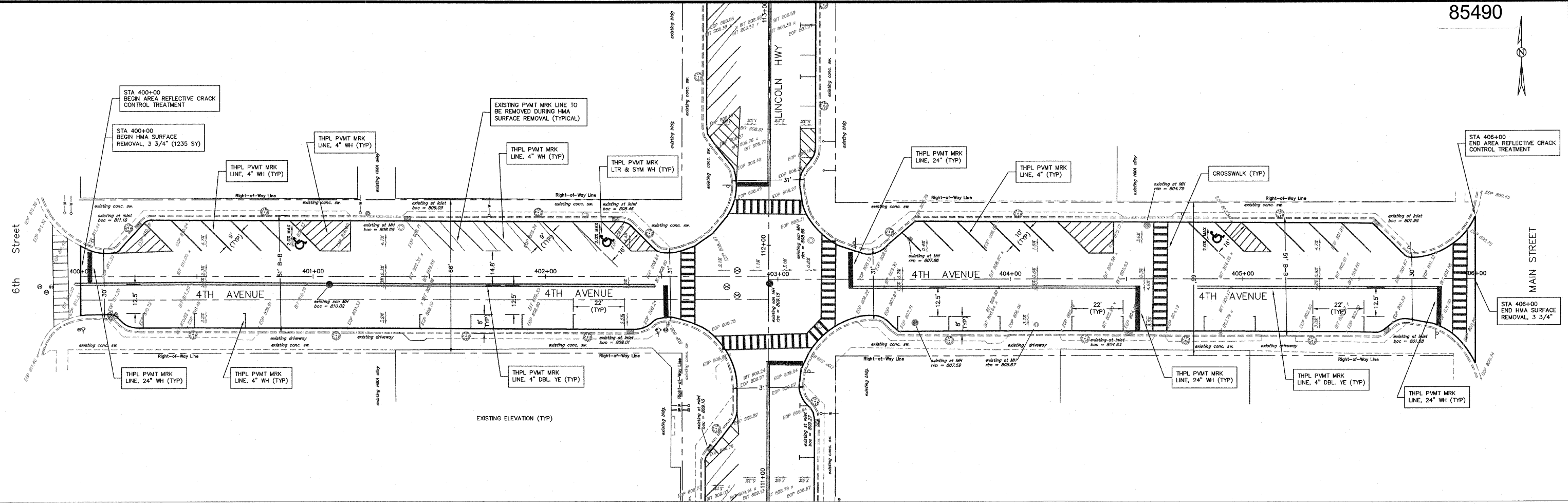


Washington Street ← → Lincoln Hwy

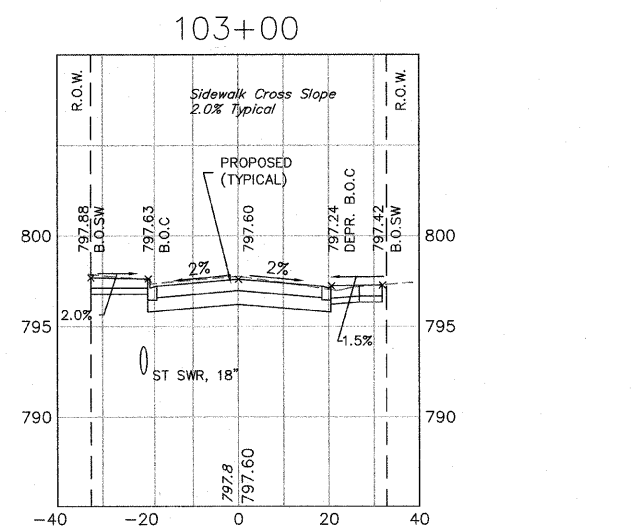
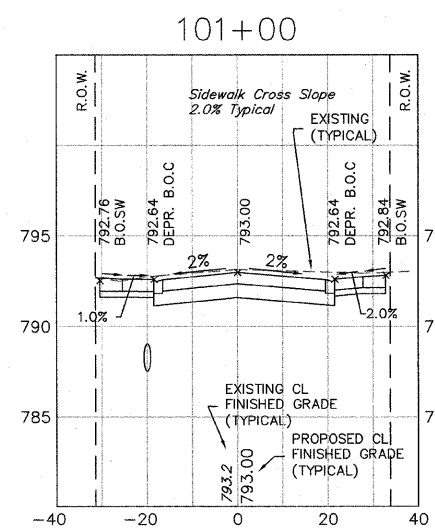
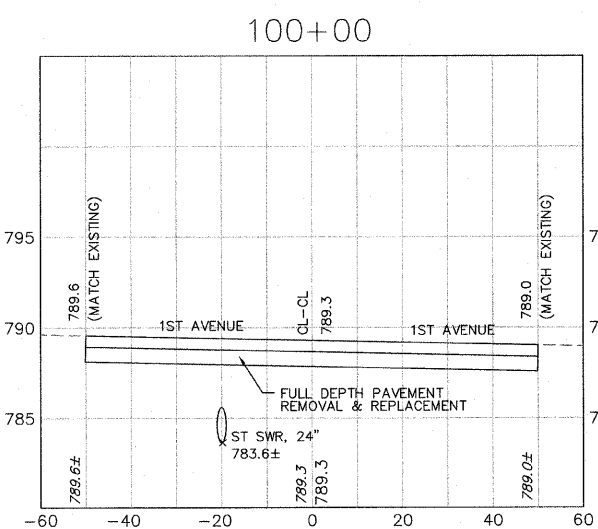
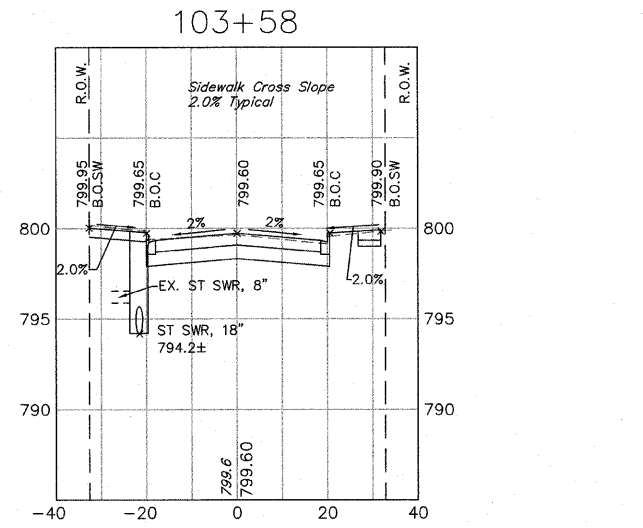
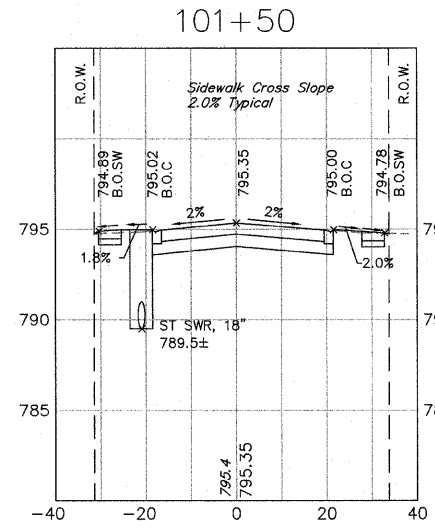
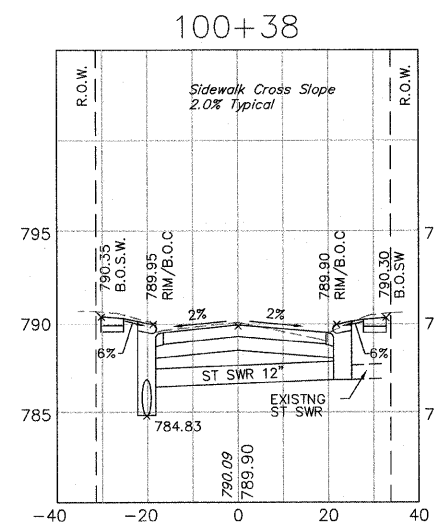
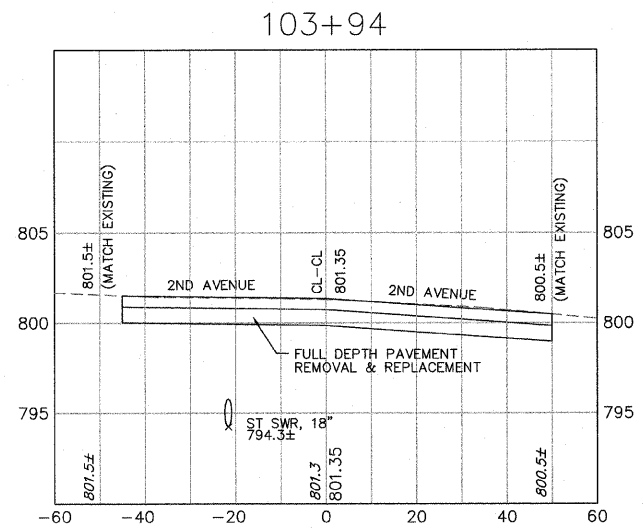
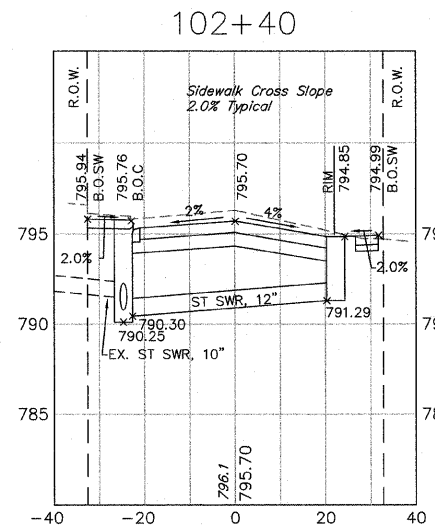
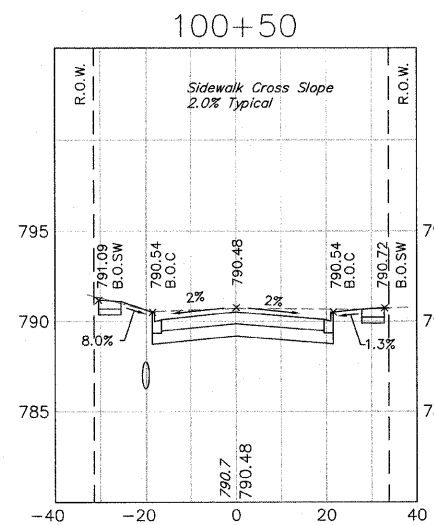
REVISIONS			
REV	DESCRIPTION	DATE	APPROVED



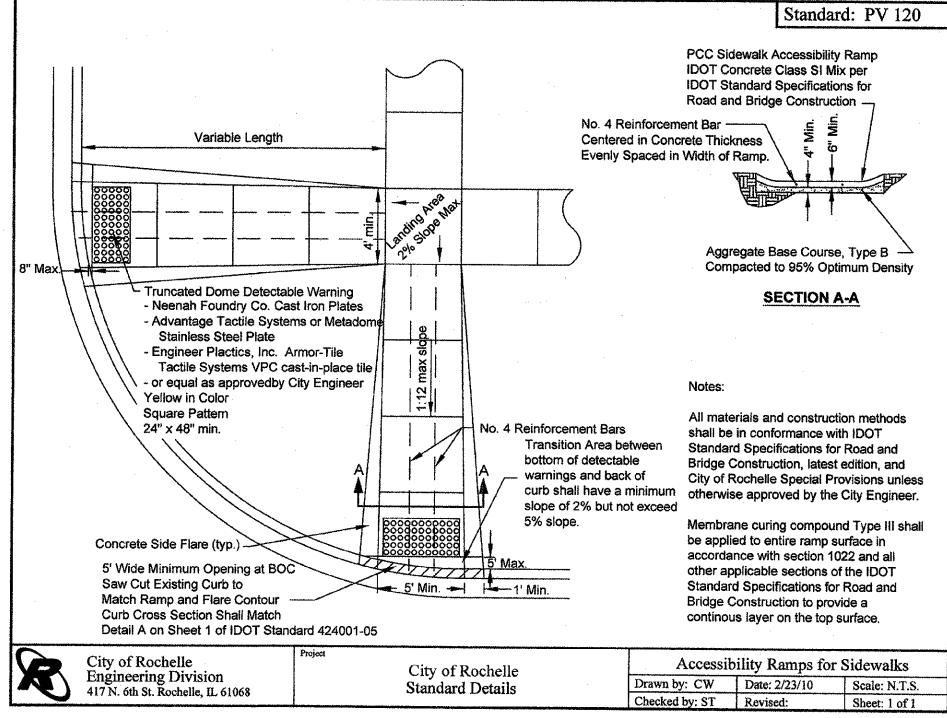
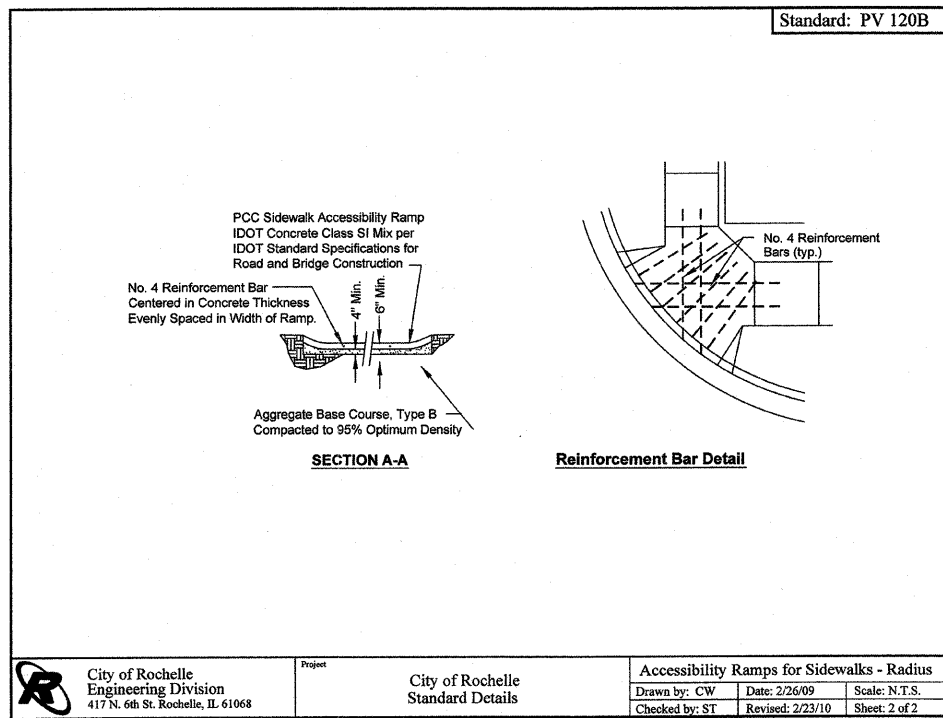
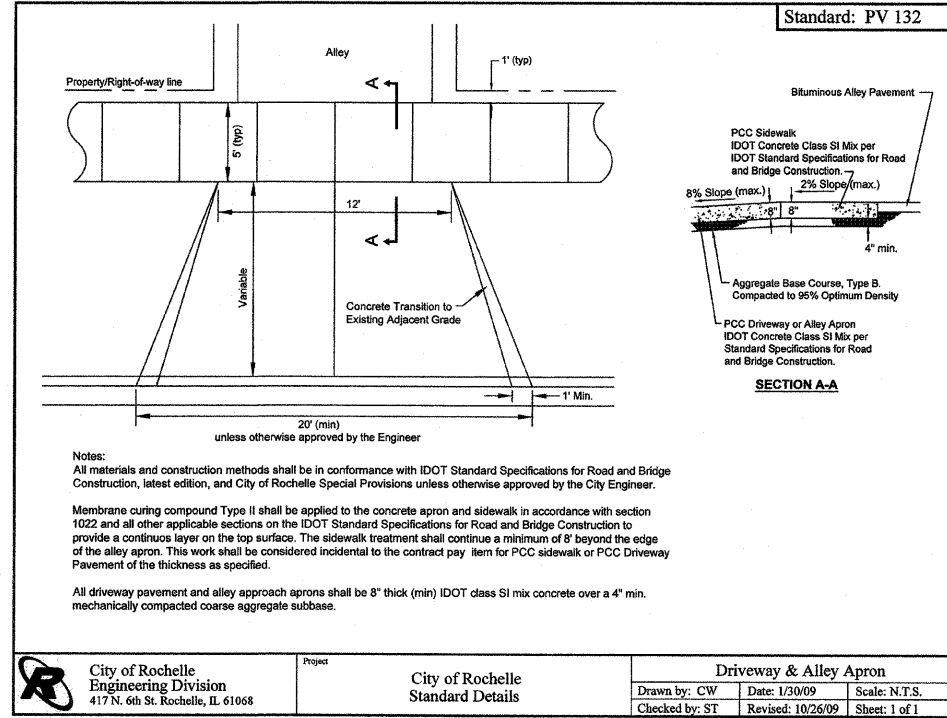
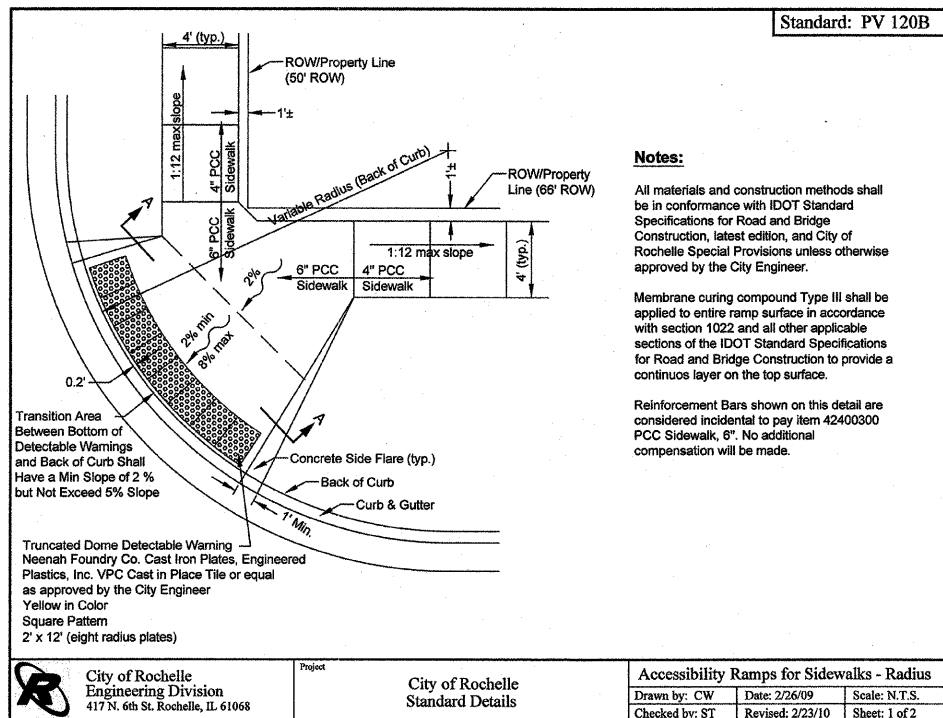
REVISIONS			
REV	DESCRIPTION	DATE	APPROVED



REVISIONS			
REV	DESCRIPTION	DATE	APPROVED

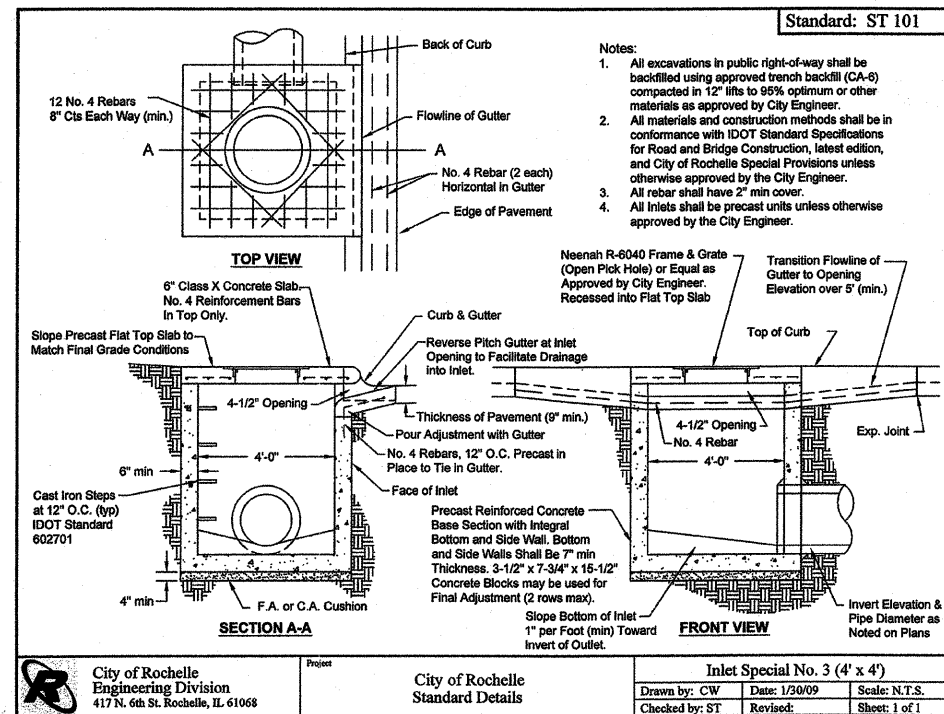
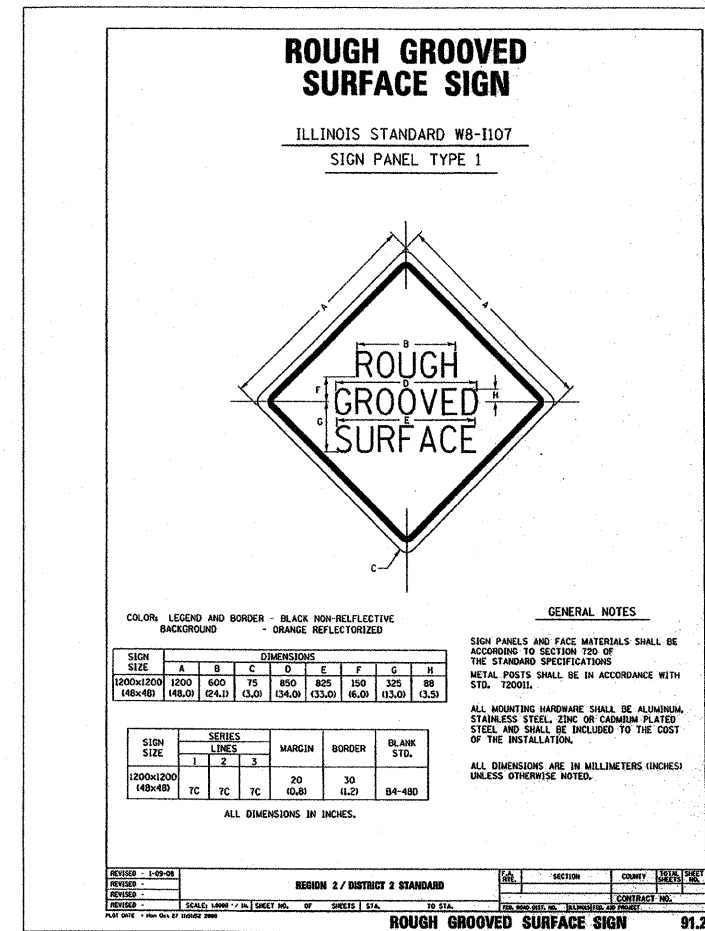
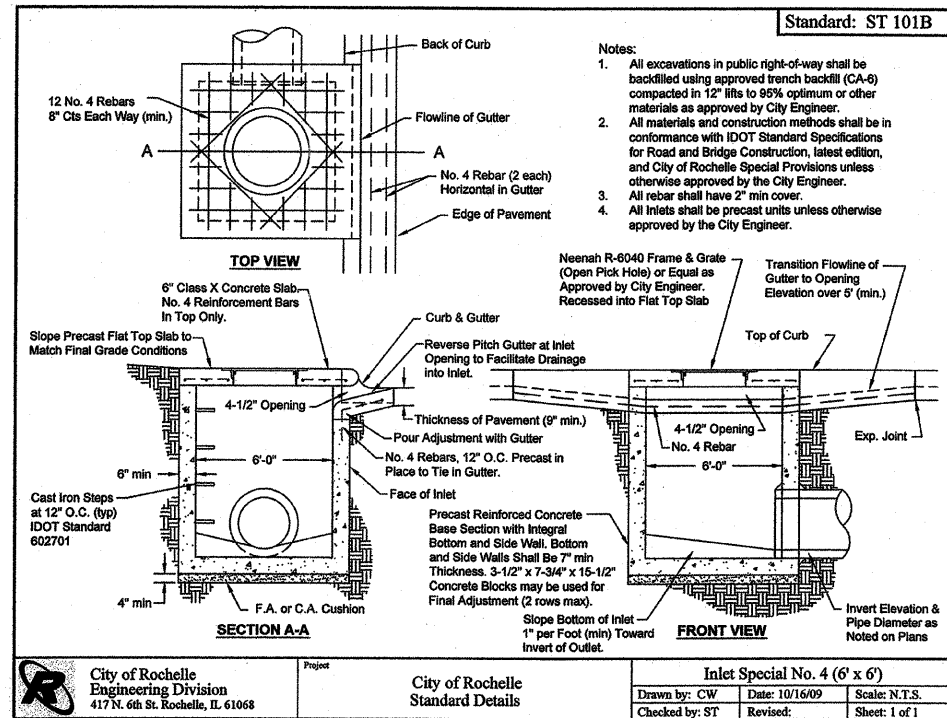


REVISIONS			
REV	DESCRIPTION	DATE	APPROVED



REVISIONS			
REV	DESCRIPTION	DATE	APPROVED





REVISIONS			
REV	DESCRIPTION	DATE	APPROVED

DRAWING: <b>Details</b>		
DRAWN BY: CW	SCALE	SHEET
CHECKED BY: ST	HORZ SCALE: NA	<b>9 of 10</b>
DATE: 3/22/10	VERT SCALE: NA	

DETOUR ROUTE

- ① ROAD CLOSED 1000 FT SIGN (W20-3) WITH "WASHINGTON ST/1ST AVE INTERSECTION" SUPPLEMENTARY SIGN
- ② DETOUR LT ARROW (M4-9LT)
- ③ DETOUR RT ARROW (M4-9RT)
- ④ "WESTBOUND 1ST AVE" 24"x24" SUPPLEMENTARY SIGN BLACK LETTERS ON WHITE BACKGROUND
- ⑤ "EASTBOUND 1ST AVE" 24"x24" SUPPLEMENTARY SIGN BLACK LETTERS ON WHITE BACKGROUND
- ⑥ TYPE 3 BARRICADES (3 EA MIN.) WITH TYPE A FLASHERS AND ROAD CLOSED SIGN (R11-2)
- ⑦ TYPE 3 BARRICADES (3 EA MIN.) WITH TYPE A FLASHERS AND ROAD CLOSED TO THRU TRAFFIC SIGN (R11-4)
- ⑧ ROAD CONSTRUCTION AHEAD SIGN (W20-1A)
- ⑨ DETOUR AHEAD SIGN (W20-2) WITH ARROW (W1-6)
- ⑩ TYPE 3 BARRICADES (2 EA MIN.) WITH TYPE A FLASHERS AND ROAD CLOSED SIGN (R11-2) TO BE INSTALLED AT EACH INTERSECTION/SIDEROAD, IN ADDITION TO REQUIRED FLAGGERS, DURING PAVEMENT SURFACE REMOVAL, HMA PLACEMENT AND STRIPING OPERATIONS
- ⑪ PORTABLE CHANGEABLE MESSAGE SIGN

Notes:

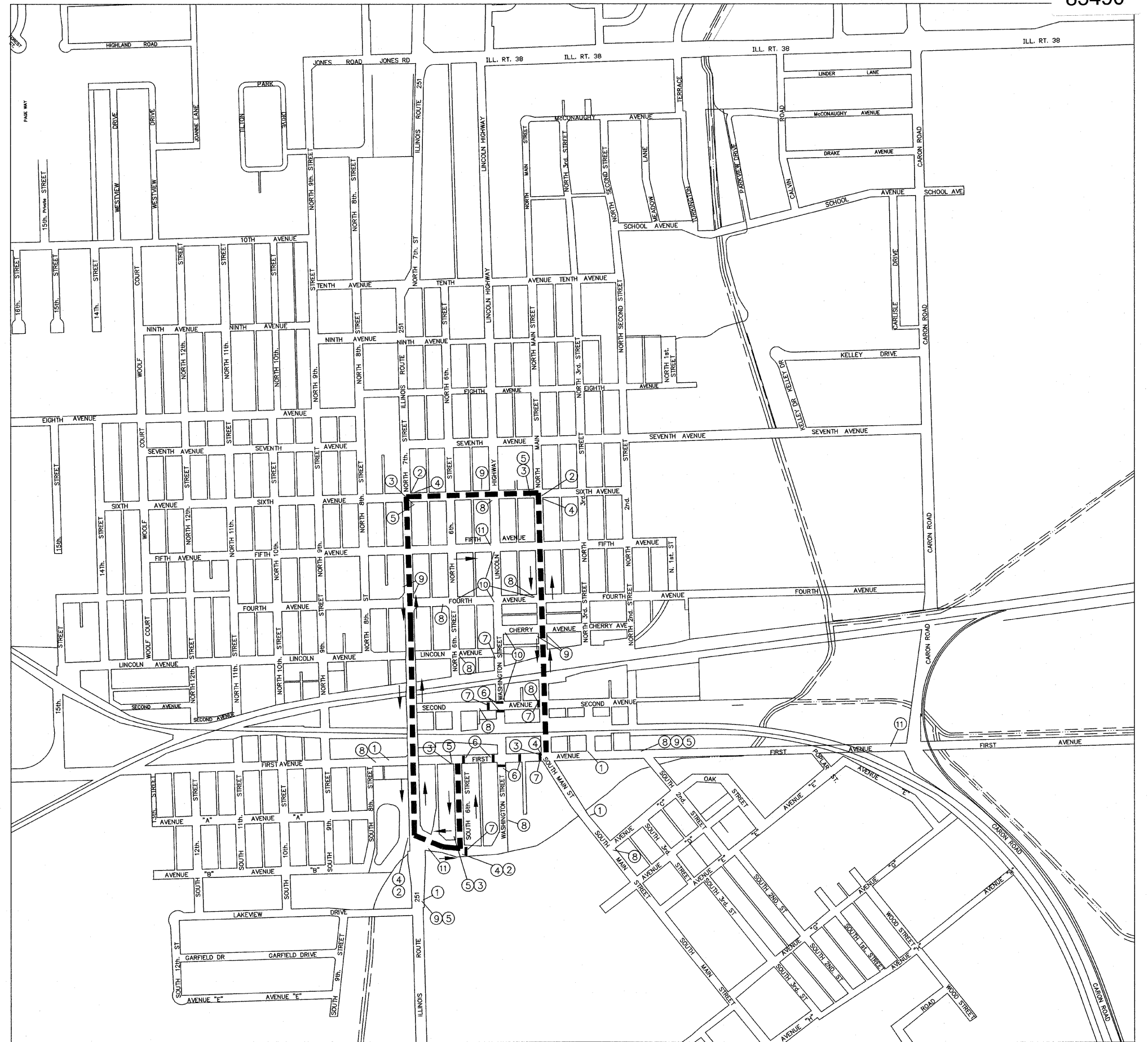
The contractor shall furnish and install all temporary traffic control devices as required by the Manual for Uniform Traffic Control Devices (MUTCD), IL Supplement to the MUTCD, IDOT Standard Specifications, Specifications, and as directed by the engineer.

Sidewalk closure signs and additional traffic control devices, including but not limited to changeable message signs, not shown on this plan shall be furnished and installed by the contractor in accordance with the applicable standards and as directed by the Engineer.

Complete road closure in project area is only allowed on Washington Street from 1st Avenue to 2nd Avenue. Contractor must provide access to residents and business along 2nd Ave between 7th and Main Street at all times.

Pavement Surface Removal and HMA Placement shall be completed in stages to reduce the disruption to downtown vehicular access and business operations. Barricades shall be placed as shown and as directed by the Engineer during pavement surface removal, HMA placement and striping operations.

See Traffic Control and Protection special provisions for further information and requirements including flaggers at all major sideroads and intersections.



REVISIONS			
REV	DESCRIPTION	DATE	APPROVED