

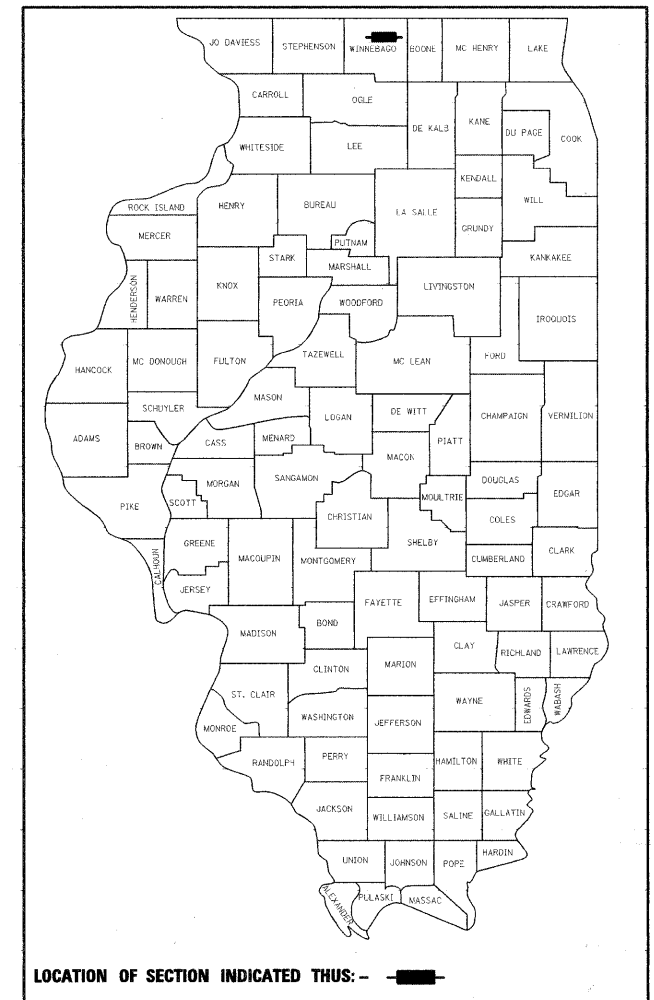
F.A.U. RTE.	SECTION	COUNTY	TOTAL SHEETS	SHEET NO.
5102	09-00557-00-BR	Winnebago	18	1
FED. ROAD DIST. NO. 2	ILLINOIS	CONTRACT NO.	85508	

INDEX OF SHEETS	
SHEET NO.	DESCRIPTION
1	COVER SHEET
2	GENERAL NOTES & SPECIFICATIONS
3	SUMMARY OF QUANTITIES
4	TYPICAL SECTIONS
5	PLAN AND PROFILE
6	TEMPORARY DETOUR PLAN
7	STRIPING, EROSION CONTROL & RESTORATION PLAN
8-16	BRIDGE PLANS
17-18	CROSS SECTIONS

STATE STANDARDS	
000001-05	STANDARD SYMBOLS, ABBREVIATIONS AND PATTERNS
280001-05	TEMPORARY EROSION CONTROL SYSTEM
515001-03	NAME PLATE FOR BRIDGES
542301-02	PRECAST REINFORCED CONCRETE FLARED END SECTION
602001-01	CATCH BASIN TYPE A
602401-02	MANHOLE TYPE A
604001-03	FRAME AND LIDS TYPE 1
604006-04	FRAME AND GRATE TYPE 3
606001-04	CONCRETE CURB TYPE B AND COMBINATION CONCRETE CURB AND GUTTER
630001-08	STEEL PLATE BEAM GUARDRAIL
630301-05	SHOULDER WIDENING FOR TYPE 1 (SPECIAL) GUARDRAIL TERMINALS
631031-08	TRAFFIC BARRIER TERMINAL, TYPE 6
635006-03	REFLECTOR AND TERMINAL MARKER PLACEMENT
635011-02	REFLECTOR MARKER AND MOUNTING DETAILS
701006-03	OFF-RD OPERATIONS, 2L, 2W, 15' (4.5M) TO 24' (600mm) FROM PAVEMENT EDGE
701201-03	LANE CLOSURE, 2L, 2W, DAY ONLY, FOR SPEEDS ≥ 45 MPH
701301-03	LANE CLOSURE, 2L, 2W, SHORT TIME OPERATIONS
701901-01	TRAFFIC CONTROL DEVICES
720001-01	SIGN PANEL MOUNTING DETAILS
720006-02	SIGN PANEL ERECTION DETAILS
720011-01	METAL POSTS FOR SIGNS, MARKERS AND DELINEATORS
728001-01	TELESCOPING STEEL SIGN SUPPORT
729001-01	APPLICATIONS OF TYPES A & B METAL POSTS (FOR SIGNS AND MARKERS)
780001-02	TYPICAL PAVEMENT MARKINGS
BLR 21-8	TYPICAL APPLICATION OF TRAFFIC CONTROL DEVICES FOR CONSTRUCTION ON RURAL LOCAL HIGHWAYS
701801-04	LANE CLOSURE MULTILANE 1W OR 2W CROSSWALK OR SIDEWALK CLOSURE
BLR 22-6	TYPICAL APPLICATION OF TRAFFIC CONTROL DEVICES FOR CONSTRUCTION ON RURAL LOCAL HIGHWAYS

# CITY OF ROCKFORD PLANS FOR PROPOSED FEDERAL AID HIGHWAY

**FAU ROUTE 5102  
CENTRAL AVENUE  
OVER THE SOUTH BRANCH OF KENT CREEK  
SECTION 09-00557-00-BR  
BRIDGE SUPERSTRUCTURE REPLACEMENT  
PROJECT NO. BHM-5099 (081)  
S.N. 101-6124  
WINNEBAGO COUNTY  
C-92-097-09**



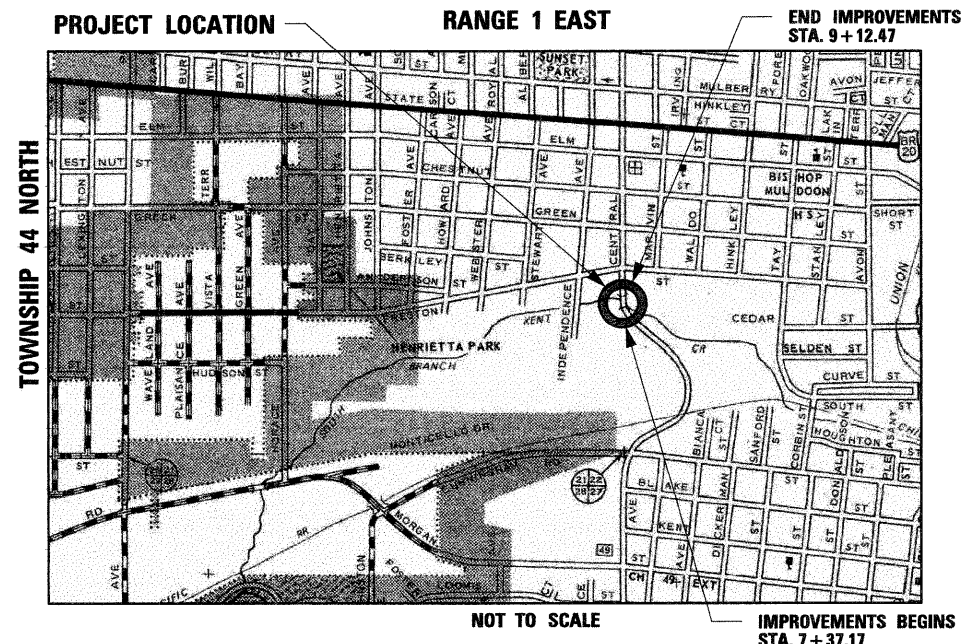
**PRINTED BY THE AUTHORITY  
OF THE STATE OF ILLINOIS**

**CITY OF ROCKFORD**

APPROVED January 27, 2010 (DATE)  
Bud T. Moberg  
CITY OF ROCKFORD, CITY ENGINEER

PASSED February 9, 2010 (DATE)  
Paul J. Plow  
DISTRICT 2 ENGINEER OF LOCAL ROADS & STREETS

RELEASING FOR BID  
BASED ON LIMITED  
REVIEW February 9, 2010 (DATE)  
Shirley F. Puzawa  
DEPUTY DIRECTOR OF HIGHWAYS, REGION 2 ENGINEER



**ROCKFORD TOWNSHIP**  
GROSS LENGTH OF IMPROVEMENT = 176 FT. = 0.03 MILES  
NET LENGTH OF IMPROVEMENT = 176 FT. = 0.03 MILES

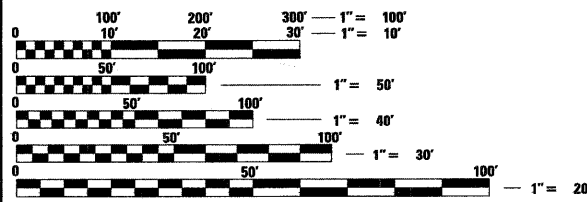
**FUNCTIONAL CLASSIFICATION  
MINOR ARTERIAL (URBAN)**

**DESIGN SPEED  
CENTRAL AVE.: 35 MPH**

**SPEED LIMIT  
CENTRAL AVE.: 30 MPH**

**TRAFFIC DATA:**  
CENTRAL AVE: ADT=5,800 (2008)  
ADT=7,200 (2030)  
4% TRUCKS

**STRUCTURE INFORMATION:**  
EXISTING SN: 101-6124:  
EXISTING THREE SPAN STRUCTURE CONSISTS OF CONTINUOUS REINFORCED CONCRETE SLAB WITH AN OUT-TO-OUT WIDTH OF 39'-0" AND A TOTAL LENGTH OF 76'-3 5/8" BK. TO BK. ABUTMENTS WITH A 9 DEGREE 56 MINUTE SKEW. THE SUBSTRUCTURES CONSIST OF PILE BENT PIERS AND ABUTMENTS. SUPERSTRUCTURE TO BE REMOVED AS SHOWN. SALVAGED EXISTING ALUMINUM RAILINGS TO REMAIN PROPERTY OF THE CITY.  
PROPOSED WORK INCLUDES PLACING A REINFORCED CONCRETE SLAB SUPERSTRUCTURE AS SHOWN.



FULL SIZE PLANS HAVE BEEN PREPARED USING STANDARD ENGINEERING SCALES. REDUCED SIZED PLANS WILL NOT CONFORM TO STANDARD SCALES. IN MAKING MEASUREMENTS ON REDUCED PLANS, THE ABOVE SCALES MAY BE USED.

**J.U.L.I.E.  
JOINT UTILITY LOCATION INFORMATION FOR EXCAVATION  
1-800-892-0123**

**CONTRACT NO. 85508**

**ENGINEER AND SURVEYOR:**  
SEC GROUP INC.  
420 NORTH FRONT STREET  
MCHENRY, ILLINOIS 60050-2136  
(815) 385-1778  
CONTACT:  
BOB DAVIES, S.E., P.E. - STRUCTURAL ENGINEER  
KEVIN M. ARFT, P.E. - PROJECT ENGINEER

**STRUCTURAL ENGINEER'S SIGN & SEAL**  
Robert G. Davies  
ROBERT G. DAVIES, S.E., P.E.  
DATE 1-26-2010  
EXPIRES 11/30/2010

**PROFESSIONAL ENGINEER'S SIGN & SEAL**  
Kevin M. Arft  
KEVIN M. ARFT, P.E.  
DATE 01-26-2010  
EXPIRES 11-30-2011

FEDERAL AID DESIGN ENGINEER: LAURA CONNOLLY (815) 284-2271

**GENERAL NOTES**

1. REMOVAL AND DISPOSAL OF UNSUITABLE MATERIAL, AND POROUS GRANULAR EMBANKMENT SUBGRADE HAS BEEN ADDED FOR USE IF UNSUITABLE MATERIAL IS ENCOUNTERED IN THE FIELD, AS DETERMINED BY THE ENGINEER. IF UNSUITABLE AND/OR UNSTABLE MATERIALS IS NOT ENCOUNTERED, THEN THE QUANTITY SHALL BE DEDUCTED AND NO COMPENSATION WILL BE DUE THE CONTRACTOR.
2. FORTY EIGHT HOURS BEFORE STARTING EXCAVATION THE CONTRACTOR WILL CALL J.U.L.I.E. (1-800-892-0123) TO HAVE THE LOCATION OF EXISTING UTILITIES STAKED.
3. THE CONTRACTOR SHALL CONTACT THE CITY OF ROCKFORD AT LEAST 72 HOURS IN ADVANCE OF BEGINNING ANY WORK ON CENTRAL AVENUE.
4. THE CONTRACTOR WILL NOT BE ALLOWED TO SET UP A YARD OR FIELD OFFICE ON CITY PROPERTY WITHOUT WRITTEN PERMISSION FROM THE CITY OF ROCKFORD.
5. PRIOR TO COMMENCEMENT OF CONSTRUCTION, THE CONTRACTOR SHALL VERIFY ALL DIMENSIONS AND CONDITIONS AFFECTING THEIR WORK WITH THE ACTUAL CONDITIONS AT THE JOB SITE. IN ADDITION, THE CONTRACTOR MUST VERIFY THE ENGINEER'S LINE AND GRADE STAKES. IF THERE ARE ANY DISCREPANCIES FROM WHAT IS SHOWN ON THE CONSTRUCTION PLANS, HE MUST IMMEDIATELY REPORT SAME TO THE ENGINEER BEFORE DOING ANY WORK, OTHERWISE THE CONTRACTOR ASSUMES FULL RESPONSIBILITY. IN THE EVENT OF DISAGREEMENT BETWEEN THE CONSTRUCTION PLANS, STANDARD SPECIFICATIONS AND/OR SPECIAL DETAILS, THE CONTRACTOR SHALL SECURE WRITTEN INSTRUCTIONS FROM THE ENGINEER PRIOR TO PROCEEDING WITH ANY PART OF THE WORK AFFECTED BY OMISSIONS OR DISCREPANCIES. FAILING TO SECURE SUCH INSTRUCTIONS, THE CONTRACTOR WILL BE CONSIDERED TO HAVE PROCEEDED AT HIS OWN RISK AND EXPENSE. IN THE EVENT OF ANY DOUBT OR QUESTION ARISING WITH RESPECT TO THE TRUE MEANING OF THE CONSTRUCTION PLANS OR SPECIFICATIONS, THE DECISION OF THE ENGINEER SHALL BE FINAL AND CONCLUSIVE.
6. THE LENGTH OF "GUARDRAIL REMOVAL" INCLUDES THE LENGTH OF THE TRAFFIC BARRIER TERMINALS.
7. THE WORK UNDER THIS CONTRACT SHALL CONFORM TO ALL REGULATIONS GIVEN IN THE ARMY CORPS OF ENGINEERS PERMIT ISSUED FOR THE PROJECT.
8. REMOVAL AND RELOCATION OF EXISTING SIGNS AND EXISTING TRAFFIC CONTROL SIGNS WILL NOT BE PAID SEPARATELY BUT WILL BE INCLUDED IN THE UNIT COST OF THE PAY ITEMS PERSUANT TO ARTICLE 107 OF THE "STANDARD SPECIFICATIONS"
9. THE CONTRACTOR SHALL PROVIDE ACCESS TO ALL ABUTTING PROPERTY AT ALL TIMES DURING THE CONSTRUCTION OF THIS PROJECT, EXCEPT FOR PERIODS OF SHORT DURATION AS DETERMINED BY THE ENGINEER.
10. THE ENGINEER WILL BE THE SOLE JUDGE CONCERNING CURING TIME FOR THE VARIOUS HMA LIFTS.
11. EXCEPT AS NOTED ON THE PLANS, PAVEMENT GRADES SHOWN ARE AT THE TOP OF PAVEMENT SURFACES.
12. OFFSET LOCATIONS GIVEN IN THE PLANS FOR STRUCTURES, EDGE OF PAVEMENT, ETC. ARE FROM THE ROADWAY CENTERLINE UNLESS NOTED OTHERWISE.
13. ALL ELEVATIONS REFERRING TO U.S.G.S. MEAN SEA LEVEL DATUM.
14. ADDITIONAL SHOULDER WIDENING INDICATED IN HIGHWAY STANDARD 630301-05 WILL NOT BE REQUIRED
15. THE EXISTING BRIDGE DESIGN PLANS ARE AVAILABLE AT THE CITY OF ROCKFORD.

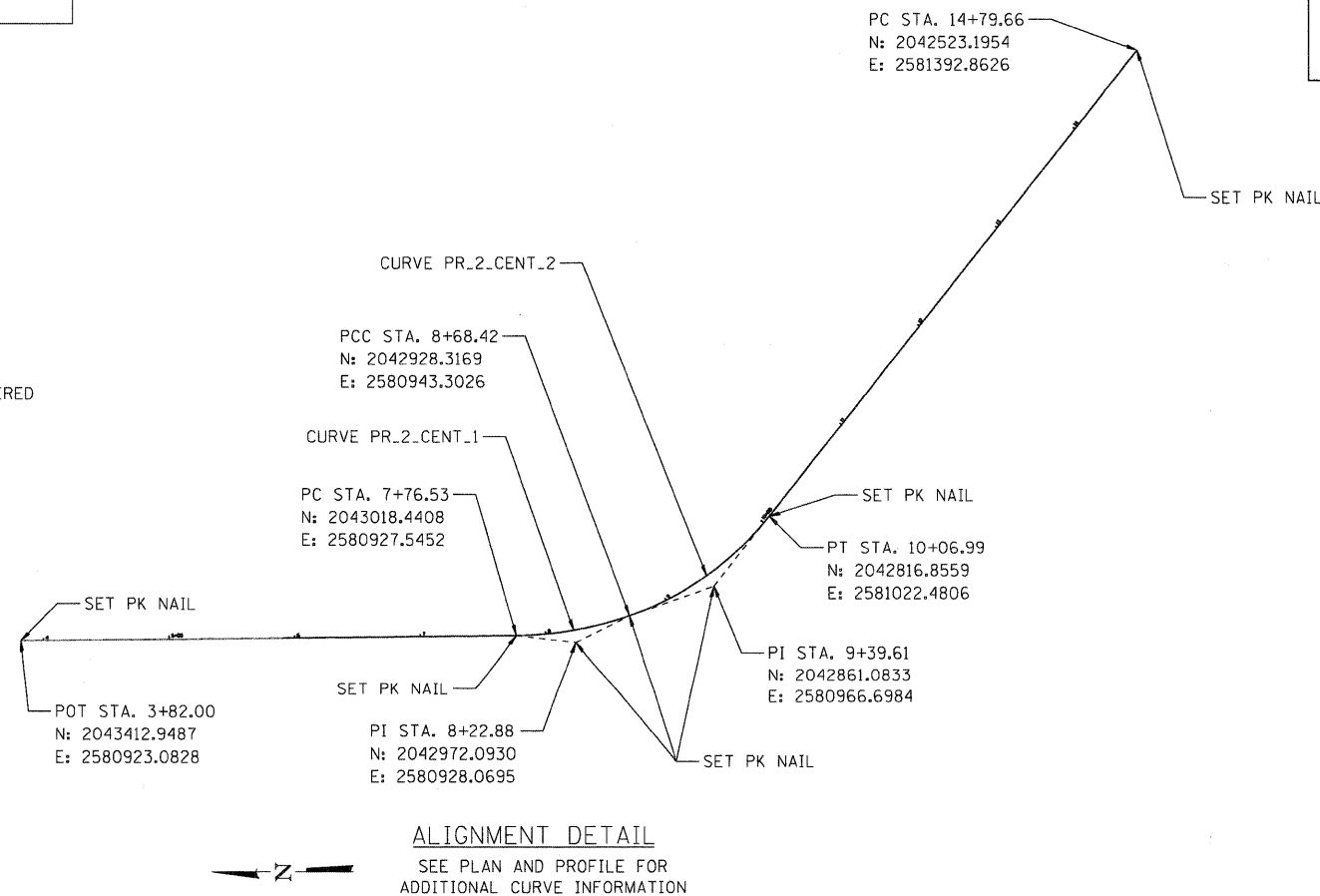
16. THE LOCATION OF EXISTING DRAINAGE STRUCTURES, STORM SEWERS, WATER MAINS, SANITARY SEWERS, AND ANY OTHER PUBLIC OR PRIVATE UTILITIES AS SHOWN ON THE PLANS IS APPROXIMATE AND THEIR EXACT LOCATION IS TO BE DETERMINED IN THE FIELD BY THE CONTRACTOR. THIS WORK SHALL BE CONSIDERED AS INCLUDED IN THE UNIT BID PRICES OF THE CONTRACT, AND NO ADDITIONAL COMPENSATION WILL BE ALLOWED.
17. THE CONTRACTOR SHALL BE RESPONSIBLE FOR THE PROTECTION OF ALL UNDERGROUND AND SURFACE UTILITIES EVEN THOUGH THEY MIGHT NOT BE SHOWN ON THE PLANS. ANY UTILITY PROPERTY DAMAGED DURING CONSTRUCTION SHALL BE REPAIRED OR REPLACED TO THE SATISFACTION OF THE OWNER AT THE CONTRACTOR'S EXPENSE.
18. ANY LOOSE MATERIAL DEPOSITED IN THE FLOWLINES OF DRAINAGE STRUCTURES WHICH OBSTRUCT THE NATURAL FLOW OF WATER SHALL BE REMOVED AT THE CLOSE OF EACH WORKING DAY. PRIOR TO ACCEPTANCE OF THE IMPROVEMENT, ALL DRAINAGE STRUCTURES SHALL BE FREE OF DIRT AND DEBRIS. THIS WORK SHALL NOT BE PAID FOR SEPARATELY BUT SHALL BE CONSIDERED AS INCLUDED IN THE UNIT BID PRICES OF THE CONTRACT.
19. WHERE NEW WORK MEETS EXISTING FEATURES TO REMAIN, THE CONTRACTOR SHALL FIELD CHECK ALL DIMENSIONS AND ELEVATIONS PRIOR TO PROCEEDING WITH CONSTRUCTION AND NOTIFY THE ENGINEER IMMEDIATELY OF ANY DISCREPANCIES.
20. SEEDING WILL NOT BE PERMITTED AT ANY TIME WHEN THE GROUND IS FROZEN, WET, OR IN AN UNTILLABLE CONDITION. LOCATIONS TO BE SEEDED WILL BE DETERMINED BY THE ENGINEER.
21. SAW CUTTING WILL BE REQUIRED FOR ALL REMOVAL ITEMS LISTED IN SECTION 440 OF THE STANDARD SPECIFICATIONS, SHOWN IN THE PLANS, AND AS DIRECTED BY THE ENGINEER. THE COST OF SAW CUTTING WILL BE INCLUDED IN CONTRACT UNIT BID PRICES FOR THE ITEMS BEING REMOVED.
22. THE COST FOR FURNISHING AND INSTALLING REFLECTOR MARKERS IN ACCORDANCE WITH HIGHWAY STANDARDS 635006 AND 635011 IS INCLUDED IN THE COST OF TRAFFIC BARRIER TERMINALS, OF THE TYPE SPECIFIED.

**SYMBOL LEGEND**

	EXISTING	PROPOSED
SANITARY MANHOLE	⊙	⊙
STORM MANHOLE	⊙	⊙
STORM CATCH BASIN INLET	○	●
FLARED END SECTION	▷	▷
VALVE VAULT	⊙	⊙
FIRE HYDRANT	▽	▽
LIGHT POLE	✱	✱
STREET SIGN	+	+
REGULATORY SIGN	+	+
UTILITY POLE	○	○
UTILITY BOX	⊙	⊙
MAILBOX	⊙	⊙
WELL	⊙	⊙
SANITARY SEWER	—	—
STORM SEWER	—	—
CULVERT	—	—
WATER MAIN	—	—
WATER MAIN ENCASEMENT	—	—
STORM UNDERDRAIN	—	—
ELECTRIC LINE	—	—
TELEPHONE LINE	—	—
GAS LINE	—	—
CABLE TV LINE	—	—
TREELINE	⊙	⊙
TREE	⊙	⊙
FENCE	—	—
EROSION CONTROL FENCE	—	—
DITCH CHECK	—	—
DRAINAGE ARROW	→	→
100 YEAR OVERFLOW	—	—

**UTILITY CONTACTS**

CITY OF ROCKFORD WATER DIVISION	GREG CASSARO	(815) 987-3084
ROCK RIVER WATER RECLAMATION DISTRICT	MIKE OLSON	(815) 387-7663
COMCAST	MICHAEL OWENS	(815) 509-7876
COMED	MIKE LENOX	(815) 490-2869
AT&T	STEVEN JONES	(815) 394-7270
NICOR	CHRIS WINTERS	(815) 455-0271



**ALIGNMENT DETAIL**  
SEE PLAN AND PROFILE FOR ADDITIONAL CURVE INFORMATION

**STANDARD ABBREVIATIONS**

- B-B - BACK TO BACK OF CURB
- B.C. - BACK OF CURB
- B.O.C. - BACK OF CURB
- B.S.L. - BUILDING SETBACK LINE
- C.B. - STORM CATCH BASIN
- C.E. - COMMONWEALTH EDISON CO.
- D.E. - DRAINAGE EASEMENT
- E-E - EDGE TO EDGE OF PAVEMENT
- E.O.P. - EDGE OF PAVEMENT
- E.O.S. - EDGE OF SHOULDER
- E.S. - EDGE OF SHOULDER
- F.E.S. - FLARED END SECTION
- I.B.T. - ILLINOIS BELL TELEPHONE CO.
- L.E. - LANDSCAPE EASEMENT
- M.H. - MANHOLE (TYPE SPECIFIED ON PLANS)
- R.O.W. - RIGHT OF WAY
- T.B.F. - TRENCH BACKFILL
- T.C. - TOP OF CURB
- T.C.E. - TEMPORARY CONSTRUCTION EASEMENT
- T.O.B. - TOP OF BERM
- T.O.C. - TOP OF CURB
- U.E. - UTILITY EASEMENT

COMPANY NAME: SEC GROUP, INC.  
 PROJECT CONTACT: Robert G. Davies  
 CLIENT: City of Rockford  
 DATE PLOTTED: 1/26/2010 10:45 PM  
 FILE NAME: 090026-Nim01.dgn  
 PLOT DRIVER: pdf.plt  
 PEN TABLE: standard-trans.tbl

**SEC Group, Inc.**  
 An HDR Group Company  
 420 N. First Street  
 Rockford, IL 61103-1130  
 P: 815.395.1779 F: 815.395.1701  
 www.secgroupinc.com

USER NAME = rhood	DESIGNED - KMA	REVISED -
FILE NAME = 090026-Nim01.dgn	DRAWN - WJH	REVISED -
PLOT SCALE = NTS	CHECKED - TH	REVISED -
PLOT DATE = 1/26/2010	DATE - 1/26/10	REVISED -

**CITY OF ROCKFORD**

**CENTRAL AVENUE OVER THE SOUTH BRANCH OF KENT CREEK**  
**GENERAL NOTES AND SPECIFICATIONS**

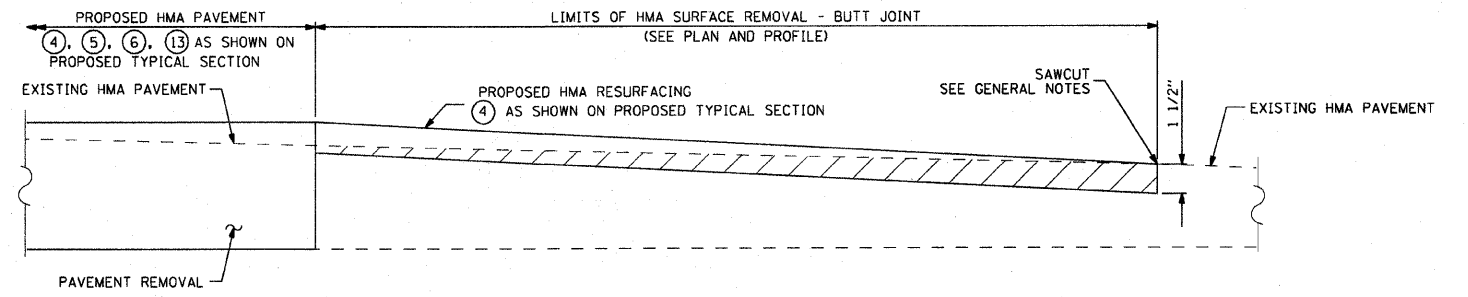
SCALE: NTS SHEET NO. 1 OF SHEETS STA. TO STA.

F.A.U. RTE.	SECTION	COUNTY	TOTAL SHEETS	SHEET NO.
5102	09-00557-00-BR	Winnebago	18	2

CONTRACT NO. 85508  
 FED. ROAD DIST. NO. 2 ILLINOIS FED. AID PROJECT

SUMMARY OF QUANTITIES			URBAN CONSTRUCTION TYPE CODE		
CODE NUMBER	PAY ITEMS	UNIT	TOTAL QUANTITY	ROADWAY	BRIDGE
Δ 20201200	REMOVAL AND DISPOSAL OF UNSUITABLE MATERIAL	CU. YD.	44.4	44.4	---
Δ 20700400	POROUS GRANULAR EMBANKMENT, SPECIAL	CU. YD.	32.6	---	32.6
Δ 20700420	POROUS GRANULAR EMBANKMENT, SUBGRADE	CU. YD.	44.4	44.4	---
21101615	TOPSOIL FURNISH AND PLACE, 4"	SO. YD.	316	316	---
25000210	SEEDING CLASS 2A	ACRE	0.10	0.10	---
25000400	NITROGEN FERTILIZER NUTRIENT	POUND	9	9	---
25000500	PHOSPHOROUS FERTILIZER NUTRIENT	POUND	9	9	---
25000600	POTASSIUM FERTILIZER NUTRIENT	POUND	9	9	---
25100630	EROSION CONTROL BLANKET	SO. YD.	316	316	---
28000305	TEMPORARY DITCH CHECKS	FOOT	32	32	---
28000400	PERIMETER EROSION BARRIER	FOOT	532	532	---
28100109	STONE RIPRAP CLASS A5	SO. YD.	523	---	523
28200200	FILTER FABRIC	SO. YD.	523	---	523
31101200	SUB-BASE GRANULAR MATERIAL, TYPE B, 4"	SO. YD.	156	156	---
40600100	BITUMINOUS MATERIALS (PRIME COAT)	GAL.	64	64	---
40600982	HOT-MIX ASPHALT SURFACE REMOVAL - BUTT JOINT	SO. YD.	192	192	---
40603080	HOT-MIX ASPHALT BINDER COURSE, IL-19.0, N50	TON	71	71	---
40603335	HOT-MIX ASPHALT SURFACE COURSE, MIX "D", N50	TON	36	36	---
42400200	PORTLAND CEMENT CONCRETE SIDEWALK, 5"	SO. FT.	245	245	---
44000100	PAVEMENT REMOVAL	SO. YD.	127	127	---
44000500	COMBINATION CURB AND GUTTER REMOVAL	FOOT	90	90	---
44000600	SIDEWALK REMOVAL	SO. FT.	245	245	---
50101500	REMOVAL OF EXISTING SUPERSTRUCTURES	EACH	1	---	1
50200100	STRUCTURE EXCAVATION	CU. YD.	32.6	---	32.6
50300255	CONCRETE SUPERSTRUCTURE	CU. YD.	160.4	---	160.4
50300260	BRIDGE DECK GROOVING	SO. YD.	246	---	246
50300300	PROTECTIVE COAT	SO. YD.	363	---	363
50800205	REINFORCEMENT BARS, EPOXY COATED	POUND	42,350	---	42,350
* 50900105	ALUMINUM RAILING, TYPE L	FOOT	72	---	72
51500100	NAME PLATES	EACH	1	---	1
54213675	PRECAST REINFORCED CONCRETE FLARED END SECTIONS 30"	EACH	1	1	---
550A0430	STORM SEWERS, CLASS A, TYPE 2 30"	FOOT	78	78	---
55101400	STORM SEWER REMOVAL 30"	FOOT	42	42	---
60204005	CATCH BASINS, TYPE A, 5' DIAMETER, TYPE 3 FRAME AND GRATE	EACH	1	1	---
60221100	MANHOLE, TYPE A, 5' DIAMETER, TYPE 1 FRAME, CLOSED LID	EACH	1	1	---
60604400	COMBINATION CONCRETE CURB AND GUTTER, TYPE B-6.18	FOOT	90	90	---
* 63000001	STEEL PLATE BEAM GUARDRAIL, TYPE A, 6 FOOT POSTS	FOOT	125	125	---
* 63100085	TRAFFIC BARRIER TERMINAL, TYPE 6	EACH	1	1	---
* Δ 63100167	TRAFFIC BARRIER TERMINAL, TYPE 1 (SPECIAL) TANGENT	EACH	1	1	---
Δ 63200310	GUARDRAIL REMOVAL	FOOT	254	254	---
67000400	ENGINEER'S FIELD OFFICE, TYPE A	CAL MO	4	4	---
67100100	MOBILIZATION	L SUM	1	0.5	0.5
Δ 70101700	TRAFFIC CONTROL & PROTECTION	L SUM	1	1	---
* 78005110	EPOXY PAVEMENT MARKING - LINE 4"	FOOT	800	800	---
* Δ 78201000	TERMINAL MARKER - DIRECT APPLY	EACH	1	1	---
* Δ X5610010	REMOVE AND REINSTALL EXISTING WATER MAIN	FOOT	74	---	74
Δ Z0013798	CONSTRUCTION LAYOUT	L SUM	1	1	---

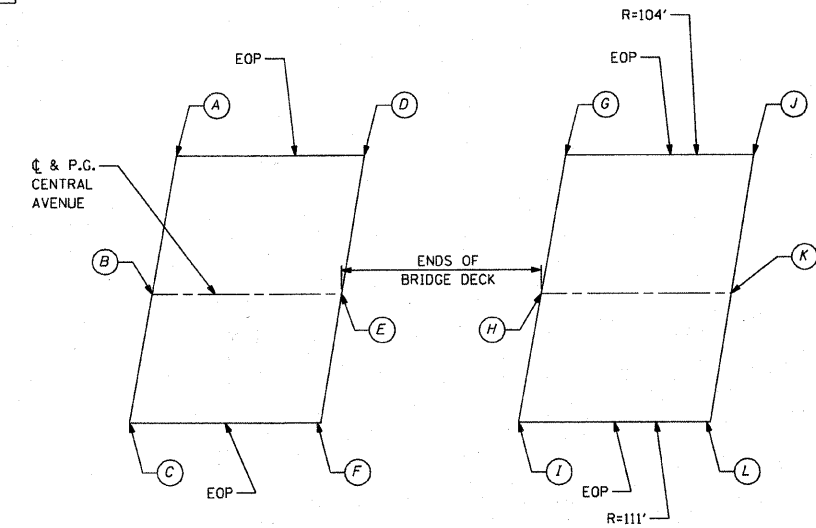
Δ DENOTES SPECIALTY ITEM  
 Δ DENOTES SPECIAL PROVISION



HMA SURFACE REMOVAL - BUTT JOINT DETAIL

STORM SEWER TAGS

- 1 EXIST. MH  
 STA. = 7+63.53, 24.8' RT  
 RIM = 722.96  
 INV = 713.96 N (2-EXIST. 18" RCP)  
 INV = 713.96 NW (EXIST 15" RCP)  
 INV = 713.85 E (PROP. 30" RCP)  
 CORE INTO EXIST. MH.  
 OPENING LEFT FROM REMOVED 30" RCP  
 SHALL BE SEALED WITH CLASS SI CONCRETE.  
 THE COST FOR CORING PROP. 30" RCP AND  
 CLOSING THE OPENING SHALL BE INCLUDED  
 IN THE COST OF STORM SEWER 30".
- 2 43 LIN FT SS CL A 2 30" @ 1.50%
- 3 CB TA 5' DIA T3 F&G  
 STA. = 7+84.97, 16.8' LT  
 RIM = 722.53 (FLOWLINE OF CURB)  
 INV. = 713.20 W  
 INV. = 713.10 E
- 4 6 LIN FT SS CL A 2 30" @ 1.50%
- 5 MH TA 5' DIA CL  
 STA. = 7+85.43, 26.8' LT  
 RIM = 722.00  
 INV. = 713.01 W  
 INV. = 712.91 S
- 6 29 LIN FT SS CL A 2 30" @ 1.41%
- 7 PRC FLAR END SEC 30"  
 STA. = 8+15.30, 28.9' LT  
 INV. = 712.50



PAVEMENT ELEVATION DETAIL

POINT	STA	EOP OFFSET	PROP. ELEV.
A	7+69.94	14.72' LT	722.37
B	7+67.17	0.00'	722.60
C	7+64.72	13.38' RT	722.65
D	7+90.68	15.44' LT	722.72
E	7+87.17	0.00'	723.09
F	7+84.42	13.50' RT	723.43
G	8+70.99	15.59' LT	724.12
H	8+62.40	0.00'	724.68
I	8+55.79	13.53' RT	725.08
J	8+91.64	13.54' LT	724.50
K	8+82.40	0.00'	725.02
L	8+74.09	13.98' RT	725.30

COMPANY NAME: Smith  
 PROJECT CONTACT: Robert G. Davies  
 CLIENT: City of Rockford  
 DATE PLOTTED: 2/3/2010 12:25:57 PM  
 FILE NAME: 090026-Soq.dgn  
 PLOT DRIVER: pdf.plt  
 PEN TABLE: STANDARD-TRANS.TBL



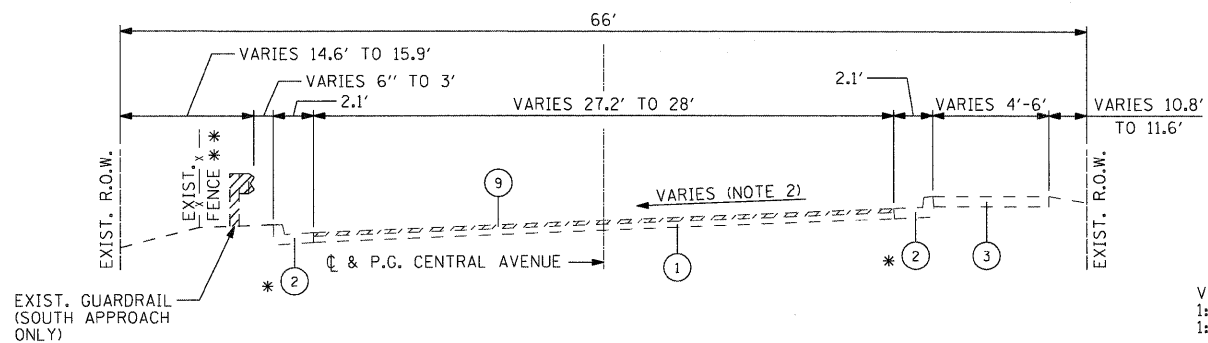
USER NAME = whood	DESIGNED - KMA	REVISED -
FILE NAME = 090026-Soq.dgn	DRAWN - WJH	REVISED -
PLOT SCALE = NTS	CHECKED - TH	REVISED -
PLOT DATE = 2/3/2010	DATE - 2/3/2010	REVISED -

CITY OF ROCKFORD

CENTRAL AVENUE OVER THE SOUTH BRANCH OF KENT CREEK  
 SUMMARY OF QUANTITIES

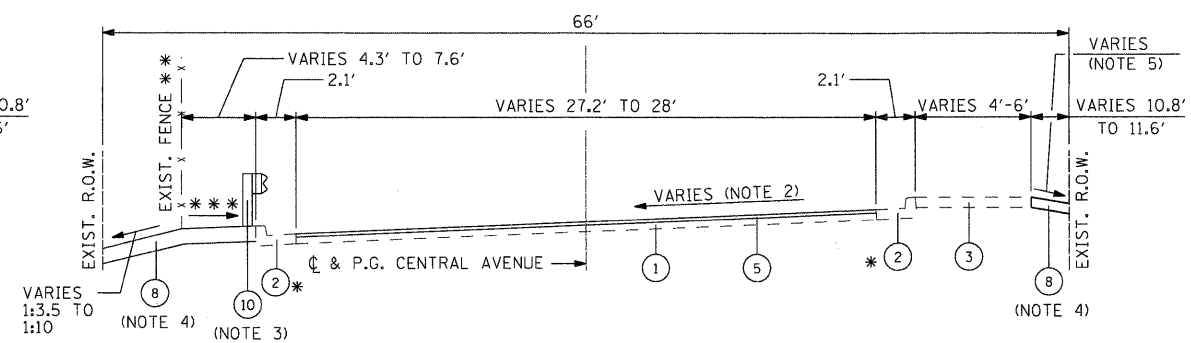
SCALE: NTS SHEET NO. 1 OF SHEETS STA. TO STA.

F.A.U. RTE.	SECTION	COUNTY	TOTAL SHEETS	SHEET NO.
5102	09-00557-00-BR	Winnebago	18	3
CONTRACT NO. 85508			FED. ROAD DIST. NO. 2 [ILLINOIS] FED. AID PROJECT	



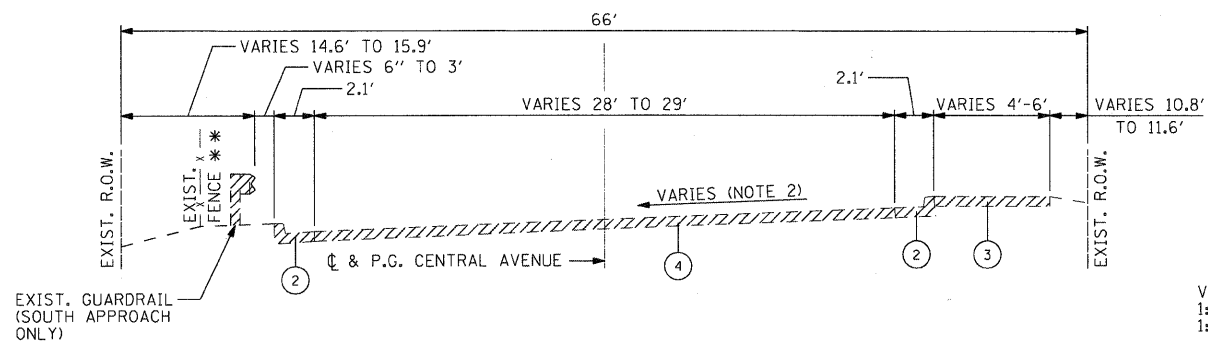
**EXISTING APPROACH ROADWAY SECTION**

STA. 7+37.17 TO STA. 7+67.17  
 STA. 8+82.47 TO STA. 9+12.47  
 \* HMA SURFACE COVERS EXIST. GUTTER  
 \*\* STA. 8+62.97 TO STA. 9+12.47 SOUTH END ONLY



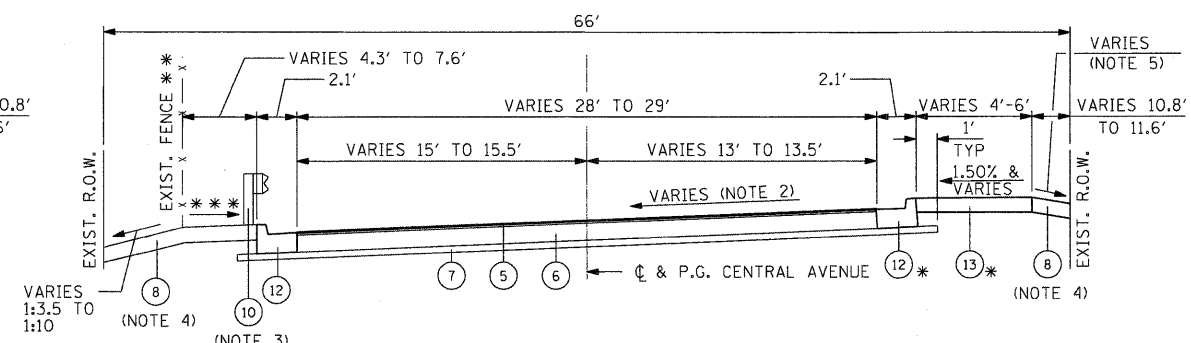
**PROPOSED APPROACH ROADWAY SECTION**

STA. 7+37.17 TO STA. 7+67.17  
 STA. 8+82.47 TO STA. 9+12.47  
 \* HMA SURFACE COVERS EXIST. GUTTER  
 \*\* STA. 8+62.97 TO STA. 9+12.47 SOUTH END ONLY  
 \*\*\* VARIES 1.50% TO MATCHING EXIST.



**EXISTING APPROACH ROADWAY SECTION**

STA. 7+67.17 TO STA. 7+86.67  
 STA. 8+62.97 TO STA. 8+82.47  
 \*\* STA. 8+62.97 TO STA. 9+12.47 SOUTH END ONLY



**PROPOSED APPROACH ROADWAY SECTION**

STA. 7+67.17 TO STA. 7+86.67  
 STA. 8+62.97 TO STA. 8+82.47  
 \* STA. 7+55.00 TO STA. 7+86.67 NORTH END  
 \*\* STA. 8+62.97 TO STA. 9+12.47 SOUTH END ONLY  
 \*\*\* VARIES 1.50% TO MATCHING EXIST.

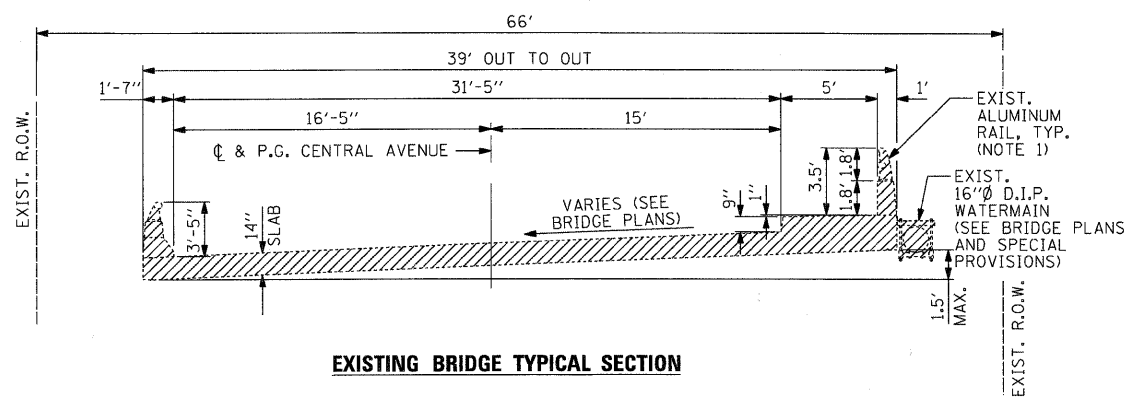
**NOTES**

1. COST FOR REMOVAL INCLUDED IN THE ITEM REMOVAL OF EXISTING SUPERSTRUCTURE
2. SEE PAVEMENT ELEVATION DETAIL ON SHEET 3 AND THE CROSS SECTIONS.
3. SOUTH APPROACH ONLY
4. SEE STRIPING, EROSION CONTROL & RESTORATION PLAN FOR LIMITS
5. SEE CROSS SECTIONS

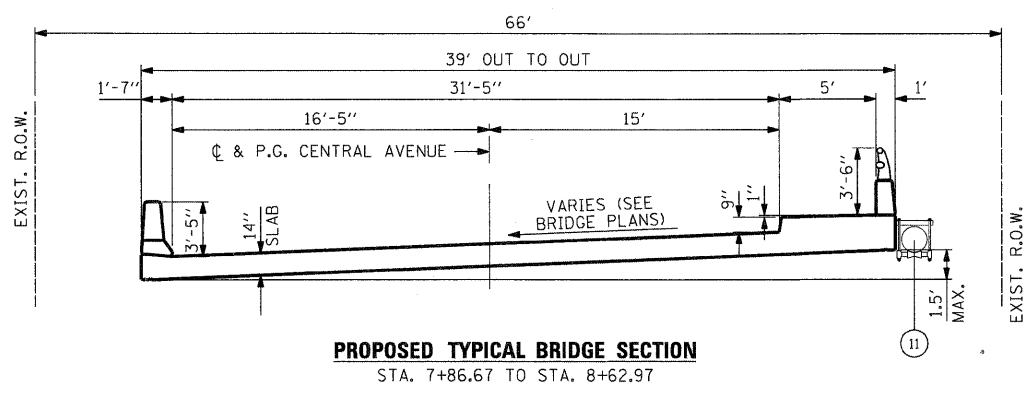
**TYPICAL SECTION LEGEND**

- 1 EXISTING HMA PAVEMENT (THICKNESS VARIES 5" TO 10")
- 2 EXIST. COMB. CC&G TB6.18
- 3 EXIST. PCC SIDEWALK
- 4 PAVEMENT REMOVAL
- 5 HOT-MIX ASPHALT SURFACE COURSE MIX "D" N50 @ 2"
- 6 HOT-MIX ASPHALT BINDER COURSE IL - 19.0, N50 @ 10"
- 7 SUBBASE GRANULAR MATERIAL, TYPE B 4"
- 8 TOPSOIL FURNISH & PLACE 4" WITH SEEDING CLASS 2A
- 9 HOT-MIX ASPHALT SURFACE REMOVAL - BUTT JOINT
- 10 STEEL PLATE BEAM GUARDRAIL, TYPE A, 6' POSTS (SOUTH APPROACH ONLY)
- 11 RE-ATTACH 16" DIA. D.I.P. WATER MAIN WITH NEW HANGERS (SEE BRIDGE PLANS)
- 12 COMBINATION CONCRETE CURB AND GUTTER, TYPE B-6.18
- 13 PORTLAND CEMENT CONCRETE SIDEWALK 5"

INDICATES ITEMS TO BE REMOVED



**EXISTING BRIDGE TYPICAL SECTION**



**PROPOSED TYPICAL BRIDGE SECTION**

STA. 7+86.67 TO STA. 8+62.97

HOT-MIX ASPHALT MIXTURE REQUIREMENTS		
MIXTURE USE	SURFACE	BINDER
PG:	PG 64-22	PG 58-22
DESIGN AIR VOIDS	4.0 @ N50	4.0 @ N50
MIXTURE COMPOSITION (GRADIATION MIXTURE)	IL 9.5 OR 12.5	IL 19.0
FRICTION AGGREGATE	D	N/A
20 YEAR ESAL	0.0	0.0
MIX UNIT WEIGHT	112 LBS/SY/IN	

SEC GROUP, INC.  
 PROJECT CONTACT: Robert C. Davies  
 CLIENT: City of Rockford  
 DATE PLOTTED: 1/26/2010 1:01:53 PM  
 FILE NAME: 090026-Typ.dgn  
 PLOT DRIVER: pdf.plt  
 PEN TABLE: standard-trans.tbl

**SEC Group, Inc.**  
 An HR Group Company  
 400 N. First Street  
 McHenry, IL 60050-3158  
 1-815-385-1778 • 815-385-1781  
 www.secgroupinc.com  
 ©2009 SEC Group, Inc. • All Rights Reserved

USER NAME = whood	DESIGNED - KMA	REVISED -
FILE NAME = 090026-Typ.dgn	DRAWN - WJH	REVISED -
PLOT SCALE = NTS	CHECKED - TH	REVISED -
PLOT DATE = 1/26/2010	DATE - 1/26/2010	REVISED -

**CITY OF ROCKFORD**

**CENTRAL AVENUE OVER THE SOUTH BRANCH OF KENT CREEK  
 TYPICAL SECTIONS**

SCALE: NTS SHEET NO. 1 OF SHEETS STA. TO STA.

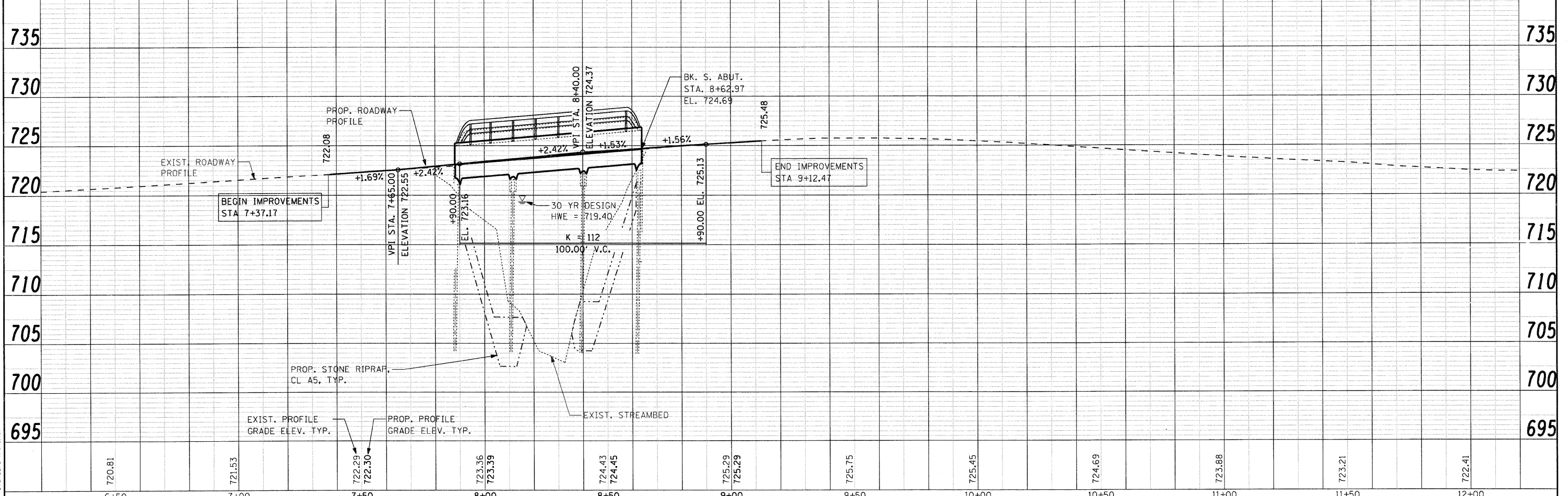
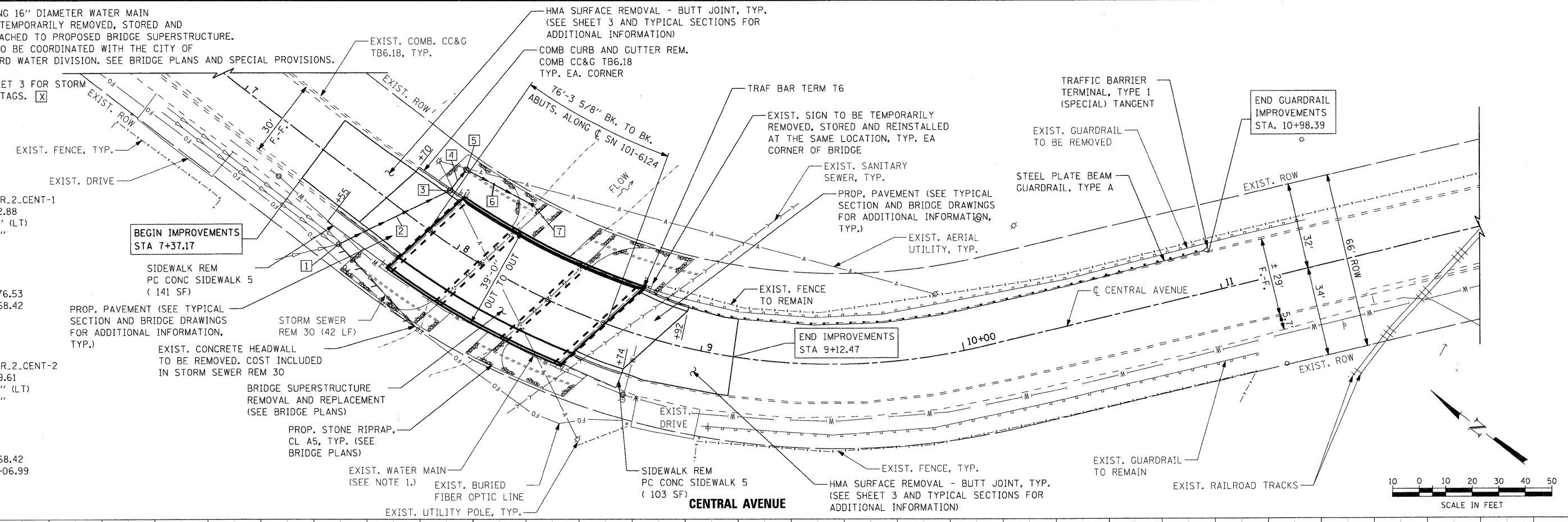
F.A.U. RTE.	SECTION	COUNTY	TOTAL SHEETS	SHEET NO.
5102	09-00557-00-BR	Winnebago	18	4
FED. ROAD DIST. NO. 2 (ILLINOIS) FED. AID PROJECT			CONTRACT NO. 85508	

NOTE 1. EXISTING 16" DIAMETER WATER MAIN TO BE TEMPORARILY REMOVED, STORED AND RE-ATTACHED TO PROPOSED BRIDGE SUPERSTRUCTURE. WORK TO BE COORDINATED WITH THE CITY OF ROCKFORD WATER DIVISION. SEE BRIDGE PLANS AND SPECIAL PROVISIONS.

NOTE 2. SEE SHEET 3 FOR STORM SEWER TAGS. [X]

PROP. CURVE PR.2.CENT-1  
 PI STA. = 8+22.88  
 $\Delta = 18^\circ 32' 19''$  (LT)  
 $D = 20^\circ 10' 28''$   
 $R = 284.00'$   
 $T = 46.35'$   
 $L = 91.89'$   
 $E = 3.76'$   
 P.C. STA = 7+76.53  
 P.T. STA = 8+68.42

PROP. CURVE PR.2.CENT-2  
 PI STA. = 9+39.61  
 $\Delta = 32^\circ 24' 14''$  (LT)  
 $D = 23^\circ 23' 10''$   
 $R = 245.00'$   
 $T = 71.19'$   
 $L = 138.56'$   
 $E = 10.13'$   
 P.C. STA = 8+68.42  
 P.T. STA = 10+06.99



COMPANY NAME: SEC Group, Inc.  
 PROJECT CONTACT: Robert C. Davies  
 CLIENT: City of Rockford  
 DATE PLOTTED: 1/26/2010 10:59 AM  
 FILE NAME: 090026-pnp01-PDR.dgn  
 PLOT DRIVER: pnf.plt  
 PEN TABLE: standard-trans.tbl

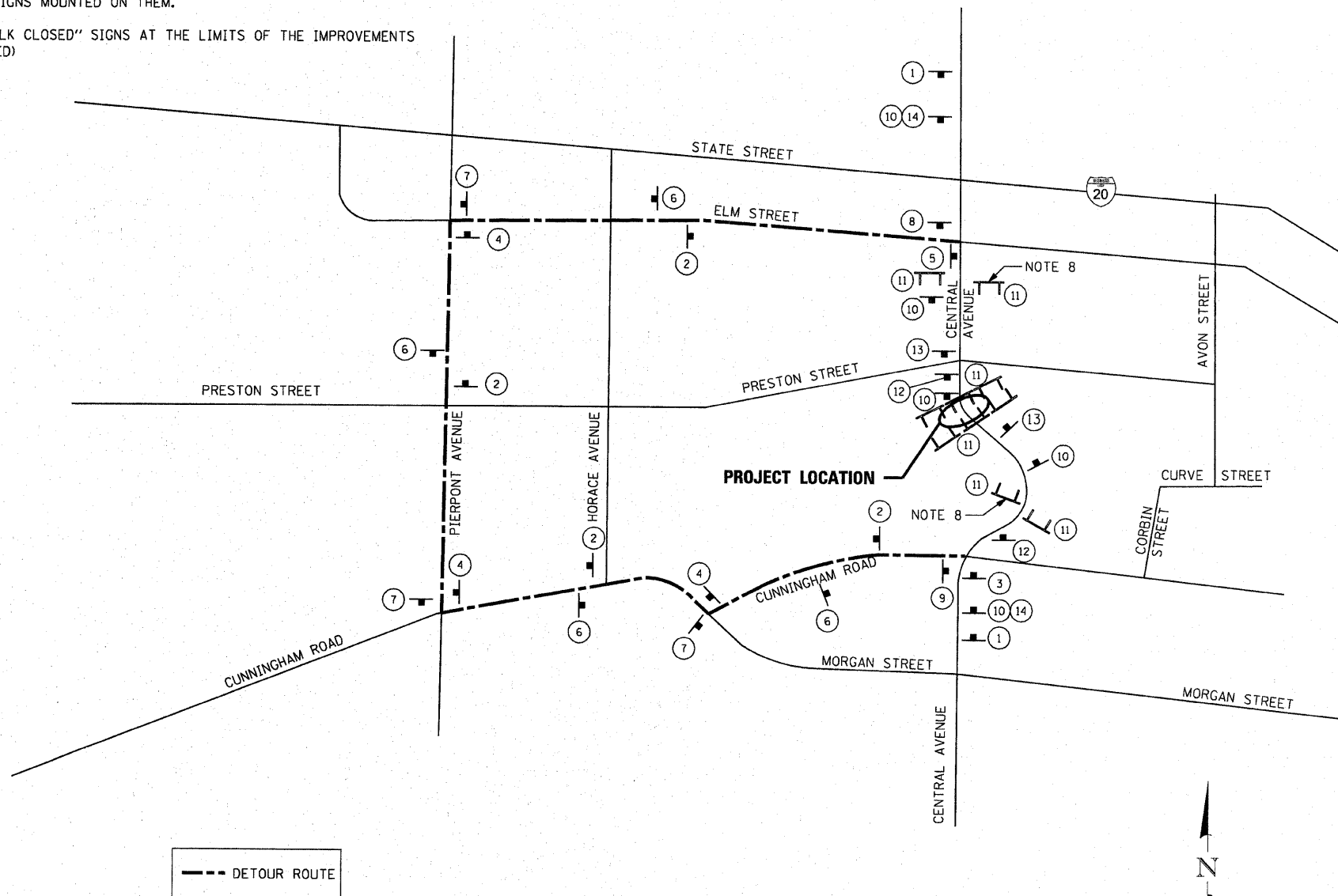
<p>SEC Group, Inc.          An HR Group Company          420 N. First Street          Rockford, IL 61103-2130          815.395.1779   815.365.1761          www.secgroupinc.com</p>	USER NAME = whood FILE NAME = 090026-pnp01-PDR.dgn PLOT SCALE = 1"=20' PLOT DATE = 1/26/2010	DESIGNED - KMA DRAWN - WJH CHECKED - TH DATE = 1/26/10	REVISED - REVISED - REVISED - REVISED -	<b>CITY OF ROCKFORD</b>  <b>CENTRAL AVENUE OVER THE SOUTH BRANCH OF KENT CREEK</b> <b>PROPOSED PLAN AND PROFILE</b>	F.A.U. RTE. = 5102 SECTION = 09-00557-00-BR COUNTY = Winnebago TOTAL SHEETS = 18 SHEET NO. = 5	CONTRACT NO. = 85508 FED. ROAD DIST. NO. 2 [ILLINOIS] FED. AID PROJECT
	SCALE: 1"=20'    SHEET NO. 1 OF 1 SHEETS    STA. 6+50 TO STA. 12+00					
	CITY OF ROCKFORD					
	SEC Group, Inc.					

**ROAD CLOSURE GENERAL NOTES:**

1. THE CONTRACTOR WILL BE ALLOWED TO CLOSE CENTRAL AVENUE TO THRU TRAFFIC BETWEEN STATE STREET AND CUNNINGHAM ROAD IN ACCORDANCE WITH THE SPECIAL PROVISIONS.
2. THE DETOUR ROUTE SHALL BE POSTED PRIOR TO CLOSING THE ROAD.
3. ALL TRAFFIC CONTROL WORK ASSOCIATED WITH THE ROAD CLOSURE, SIGNING, TEMPORARY FENCING AND BARRICADING SHALL BE INCLUDED IN THE PAY ITEM FOR 'TRAFFIC CONTROL AND PROTECTION'.
4. THE CONTRATOR SHALL GIVE THE ENGINEER, THE CITY, IDOT, AND THE WINNEBAGO COUNTY HIGHWAY DEPARTMENT A 72 HOUR NOTICE PRIOR TO PLACING THE ADVANCE NOTICE SIGNS.
5. ADVANCE NOTICE SIGNS, (12), SHALL BE PLACED TWO WEEKS PRIOR TO CLOSING THE ROADWAY.
6. ALL SIGNS SHALL CONFORM TO SPACING REQUIREMENTS SET FORTH IN THE 'MANUAL ON UNIFORM TRAFFIC CONTROL DEVICES FOR STREETS AND HIGHWAYS'.
7. THE CONTRACTOR SHALL MAINTAIN ACCESS TO ADJACENT DRIVEWAYS IN ACCORDANCE WITH THE SPECIAL PROVISIONS.
8. PROVIDE PAIR OF STAGGERED TYPE 3 BARRICADES, (11), IN ACCORDANCE WITH HIGHWAY STANDARD BLR 22. EACH BARRICADE SHALL HAVE "ROAD CLOSED TO THRU TRAFFIC" SIGNS MOUNTED ON THEM.
9. PROVIDE "SIDEWALK CLOSED" SIGNS AT THE LIMITS OF THE IMPROVEMENTS (2 SIGNS REQUIRED)

**SIGN LEGEND**

- 1. W20-2 (48"x48") WITH STREET SIGN AND FLASHING AMBER LIGHT
- 2. M4-9 (30"x21") WITH STREET SIGN AND DIRECTION OF TRAFFIC
- 3. M4-9L (30"x24") WITH STREET SIGN AND DIRECTION OF TRAFFIC
- 4. M4-9R (30"x24") WITH STREET SIGN AND DIRECTION OF TRAFFIC
- 5. M4-8a (24"x18") WITH STREET SIGN AND INFORMATION SIGN
- 6. M4-9 (30"x24") WITH STREET SIGN AND DIRECTION OF TRAFFIC
- 7. M4-9L (30"x24") WITH STREET SIGN AND DIRECTION OF TRAFFIC
- 8. M4-9R (30"x24") WITH STREET SIGN AND DIRECTION OF TRAFFIC
- 9. M4-8a (24"x18") WITH STREET SIGN AND INFORMATION SIGN
- 10. W20-3 (48"x48") WITH FLASHING AMBER LIGHT
- 11. R11-2 (48"x30") WITH 2 FLASHING AMBER LIGHTS
- 12. INFO (48"x30")
- 13. W20-3 (48"x48") WITH FLASHING AMBER LIGHT
- 14. DISTANCE SIGN



--- DETOUR ROUTE

**PROPOSED DETOUR ROUTE**  
(CENTRAL AVENUE - BRIDGE RE-CONSTRUCTION)

COMPANY NAME: Smith, G. Davis  
 PROJECT CONTACT: City of Rockford  
 CLIENT: 2/23/2010 12:30:55 PM  
 DATE PLOTTED: 09/02/06 01:11:00  
 FILE NAME: 090206-D1r.dgn  
 PLOT DRIVER: pdf.plt  
 PEN TABLE: STANDARD-TRANS.TBL

**SEC Group, Inc.**  
 25111 Green Company  
 420 N. Ford Street  
 Moline, IL 61201-2100  
 L 815.365.1778 F 815.365.1781  
 www.secgroup.com  
 Michigan, IL, Indiana, WI, Ohio, OH

USER NAME = wwood	DESIGNED - KMA	REVISED -
FILE NAME = 090206-D1r.dgn	DRAWN - WJH	REVISED -
PLOT SCALE = 1"=20'	CHECKED - TH	REVISED -
PLOT DATE = 2/3/2010	DATE - 2/3/10	REVISED -

**CITY OF ROCKFORD**

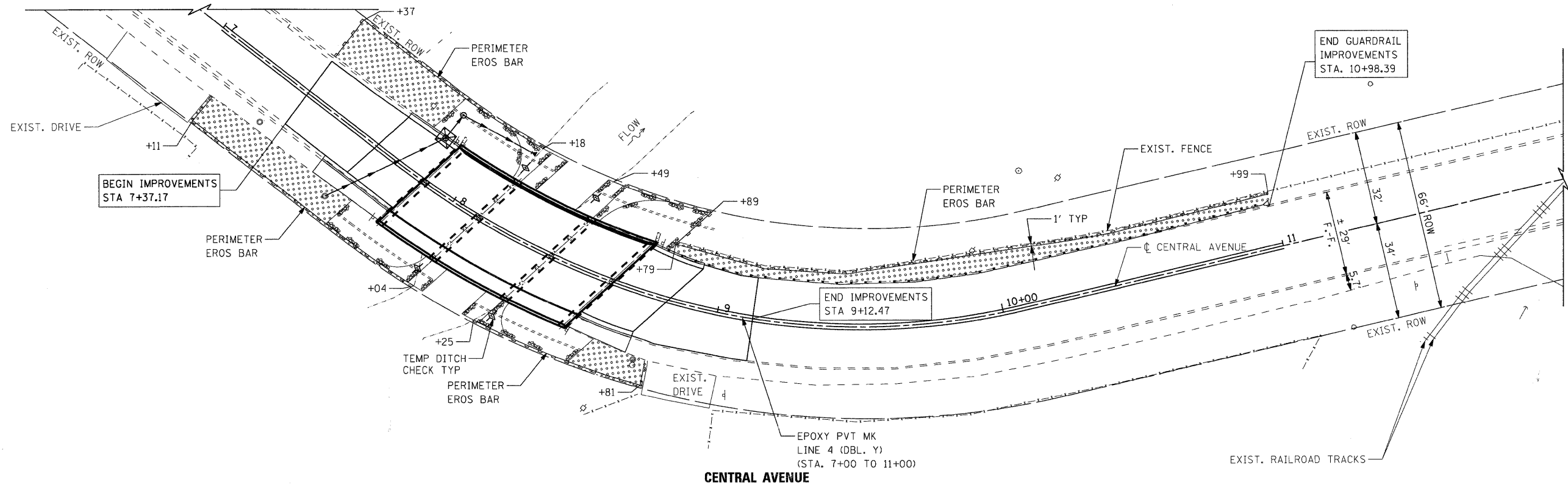
**CENTRAL AVENUE OVER THE SOUTH BRANCH OF KENT CREEK  
 TEMPORARY DETOUR PLAN**

F.A.U. RTE. 5102	SECTION 09-00557-00-BR	COUNTY Winnebago	TOTAL SHEETS 18	SHEET NO. 6
FED. ROAD DIST. NO. 2 [ILLINOIS] FED. AID PROJECT			CONTRACT NO. 85508	

SCALE: 1"=20' SHEET NO. 1 OF SHEETS STA. TO STA.

**EROSION CONTROL NOTES**

1. THE CONTRACTOR WILL BE REQUIRED TO IMPLEMENT AND MAINTAIN EROSION CONTROL MEASURES IMMEDIATELY AFTER STRIPPING OF EXISTING VEGETATION.
2. TEMPORARY DITCH CHECKS ARE MEASURED PER FOOT, REGARDLESS OF TYPE OR CONFIGURATION USED.
3. STOCKPILES OF SOIL AND OTHER BUILDING MATERIALS TO REMAIN IN PLACE MORE THAN THREE (3) DAYS SHALL BE FURNISHED WITH EROSION AND SEDIMENT CONTROL MEASURES (I.E. PERIMETER SILT FENCE). STOCKPILES TO REMAIN IN PLACE FOR 30 DAYS OR MORE SHALL RECEIVE TEMPORARY SEEDING.
4. THE CONTRACTOR SHALL TAKE ALL PRECAUTIONS TO PREVENT POLLUTION OF STORM WATER AND SHALL FOLLOW IEPA REGULATIONS & IDOT CONSTRUCTION MEMORANDUM NO. 06-60.
5. STABILIZATION MEASURES SHALL BE INITIATED WITHIN 7 DAYS OF CONSTRUCTION ACTIVITY TEMPORARILY OR PERMANENTLY CEASING IN AREAS WHERE IT WILL NOT OCCUR FOR A PERIOD OF 14 OR MORE CALENDAR DAYS.
6. THE SOIL EROSION AND SEDIMENT CONTROL PRACTICES WILL BE INSPECTED WEEKLY AND AFTER 1/2 INCH OF RAIN OR MORE BY THE INDIVIDUAL ON SITE IN CHARGE OF SOIL EROSION AND SEDIMENT CONTROL DURING THE CONSTRUCTION OF THE PROJECT.
7. SILT FENCE SHALL BE INSTALLED FOLLOWING THE COMPLETION AND STABILIZATION OF THE STORMWATER FACILITIES AND WILL REMAIN IN PLACE UNTIL THE CONTRIBUTING AREA IS STABILIZED.
8. ALL ADJACENT STREETS MUST BE KEPT CLEAR OF DEBRIS, INSPECTED DAILY AND CLEANED WHEN NECESSARY OR AS DIRECTED BY THE ENGINEER.
9. ALL SOIL EROSION AND SEDIMENT CONTROL PRACTICES ARE REFERENCED FROM THE ILLINOIS URBAN MANUAL.

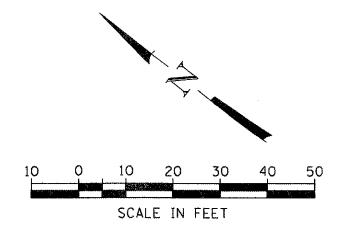


**TEMPORARY EROSION CONTROL SEQUENCE OF CONSTRUCTION**

1. ESTABLISH TEMPORARY EROSION CONTROL MEASURES AND ERECT PERIMETER EROSION BARRIER ALONG SITE BOUNDARIES PRIOR TO EARTHWORK.
2. INSTALL DITCH CHECKS IMMEDIATELY AFTER DITCH GRADING IS COMPLETED.
3. INSTALL TEMPORARY EROSION CONTROL SEEDING.

**LEGEND**

- PERIMETER EROSION BARRIER
- EXISTING R.O.W.
- DIRECTION OF FLOW
- FINAL RESTORATION OF DISTURBED AREAS  
- TOPSOIL FURNISH AND PLACE, 4"  
- SEEDING CLASS 2A  
- EROSION CONTROL BLANKET
- TEMPORARY DITCH CHECK
- INLET AND PIPE PROTECTION



COMPANY NAME: SEC GROUP, INC.  
 PROJECT CONTACT: Robert G. Davies  
 CLIENT: City of Rockford  
 DATE PLOTTED: 1/26/2010 10:08:08 AM  
 FILE NAME: 090026-Erodgn  
 PLOT DRIVER: pdf.plt  
 STANDARD: Trans.Mtl

**SEC Group, Inc.**  
 An ITR Green Company  
 420 N. First Street  
 Moline, IL 61201-2116  
 1.815.386.1779 | 1.815.386.1781  
 www.secgroupinc.com  
 ©2009 SEC Group, Inc. All Rights Reserved. Chicago, IL

USER NAME = whoad	DESIGNED - KMA	REVISED -
FILE NAME = 090026-Erodgn	DRAWN -	REVISED -
PLOT SCALE =	CHECKED - TH	REVISED -
PLOT DATE = 1/26/2010	DATE - 1/26/10	REVISED -

**CITY OF ROCKFORD**

**CENTRAL AVENUE OVER THE SOUTH BRANCH OF KENT CREEK STRIPING, EROSION CONTROL, AND RESTORATION PLAN**

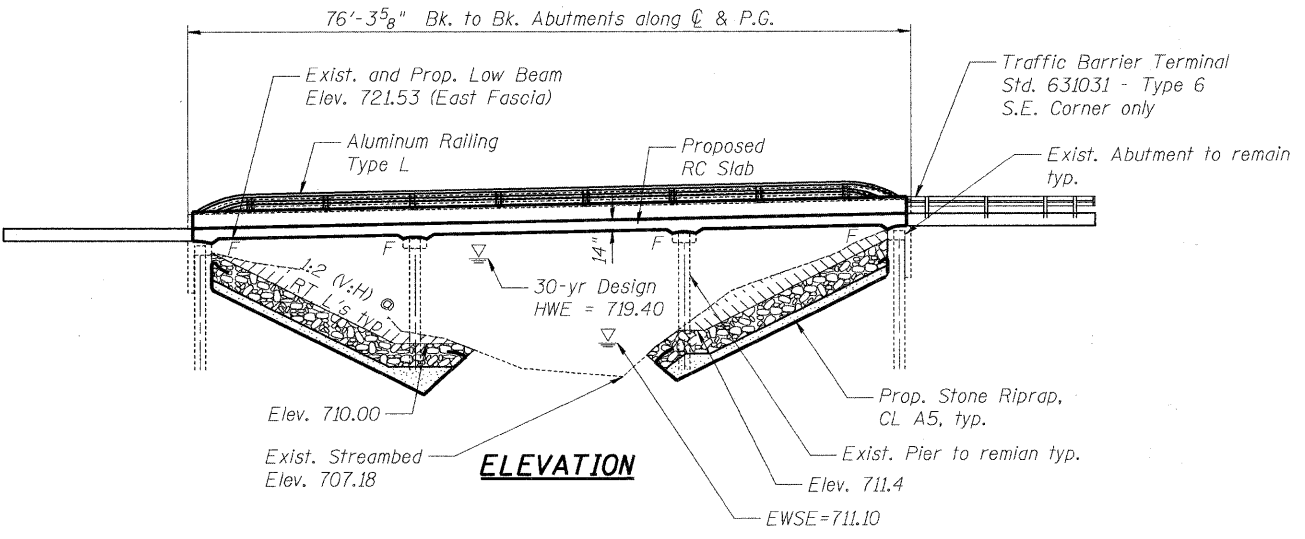
SCALE: SHEET NO. 1 OF SHEETS STA. TO STA.

F.A.U. RTE.	SECTION	COUNTY	TOTAL SHEETS	SHEET NO.
5102	09-00557-00-BR	Winnebago	18	7
CONTRACT NO. 85508			FED. ROAD DIST. NO. 2 ILLINOIS FED. AID PROJECT	

Bench Marks:  
 BM 1: Railroad spike in north face of wood light pole located at the southwest corner of the South Central bridge over Kent Creek. Elevation = 726.59 NAVD88  
 BM 2: Railroad spike in the south face of wood power pole located at the northeast corner of South Central Avenue and Preston Street. Elevation = 719.84 NAVD88

Existing Structure: S.N. 101-6124, originally built in 1975. The existing structure consists of a 3 span continuous reinforced concrete slab supported on pile bent piers and abutments. The back to back abutments measures 76'-3 5/8" along the C & P.G. and the out to out of deck is 39'-0". The Superstructure is to be removed and replaced. The Substructure is to remain. Traffic is to be detoured during construction.

No Salvage except for undamaged rails from the existing Aluminum Railings. Salvaged rails shall remain the property of the City of Rockford. Cost shall be included in the Removal of Existing Superstructures.



**LOADING HS 20-44**  
 Allow 25#/sq. ft. for future wearing surface.  
**DESIGN SPECIFICATIONS**  
 2002 AASHTO Standard Specifications

**DESIGN STRESSES**  
**FIELD UNITS**

f'c = 3,500 psi  
 fy = 60,000 psi (Reinforcement)

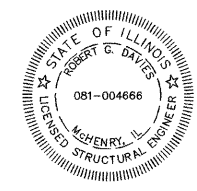
**SEISMIC DATA**

Seismic Performance Category (SPC) = A  
 Bedrock Acceleration Coefficient (A) = 4%g  
 Site Coefficient (S) = 1.0

**CURVE DATA**

Central Avenue Curve 1		Central Avenue Curve 2	
D = 20°10'28"	T = 46.35'	D = 23°23'10"	T = 71.19'
L = 91.89'	E = 3.76'	L = 138.56'	E = 10.13'
R = 284.00'	S.E. =	R = 245.00'	S.E. =
P.C. = Sta. 7+76.53	P.T. = Sta. 8+68.42	P.C. = Sta. 8+68.42	P.T. = Sta. 10+06.99
P.I. = Sta. 8+22.88	P.I. = Sta. 9+39.61		

See S-2 for offset sketch



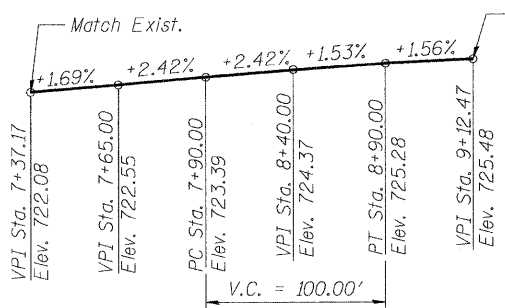
To the best of my knowledge, information and belief, this bridge design is structurally adequate for the design loading shown on the plans. The design is an economical one for the style of structure and complies with requirements of the current "AASHTO Standard Specifications for Highway Bridges".

*Robert G. Daves* 1/26/2010  
 Structural Engineer Expires: 11/30/2010  
 SEC Group, Inc.

KENT CREEK  
 RE-BUILT 2010 BY  
 CITY OF ROCKFORD  
 SEC. 09-00557-00-BR  
 F.A.U. RT. 5102 STA. 8+25.00  
 STR. NO. 101-6124 LOADING HS20

**NAME PLATE**  
 See Std. 515001

Existing Name Plate shall be cleaned and relocated next to the new Name Plate. Cost included with Name Plates

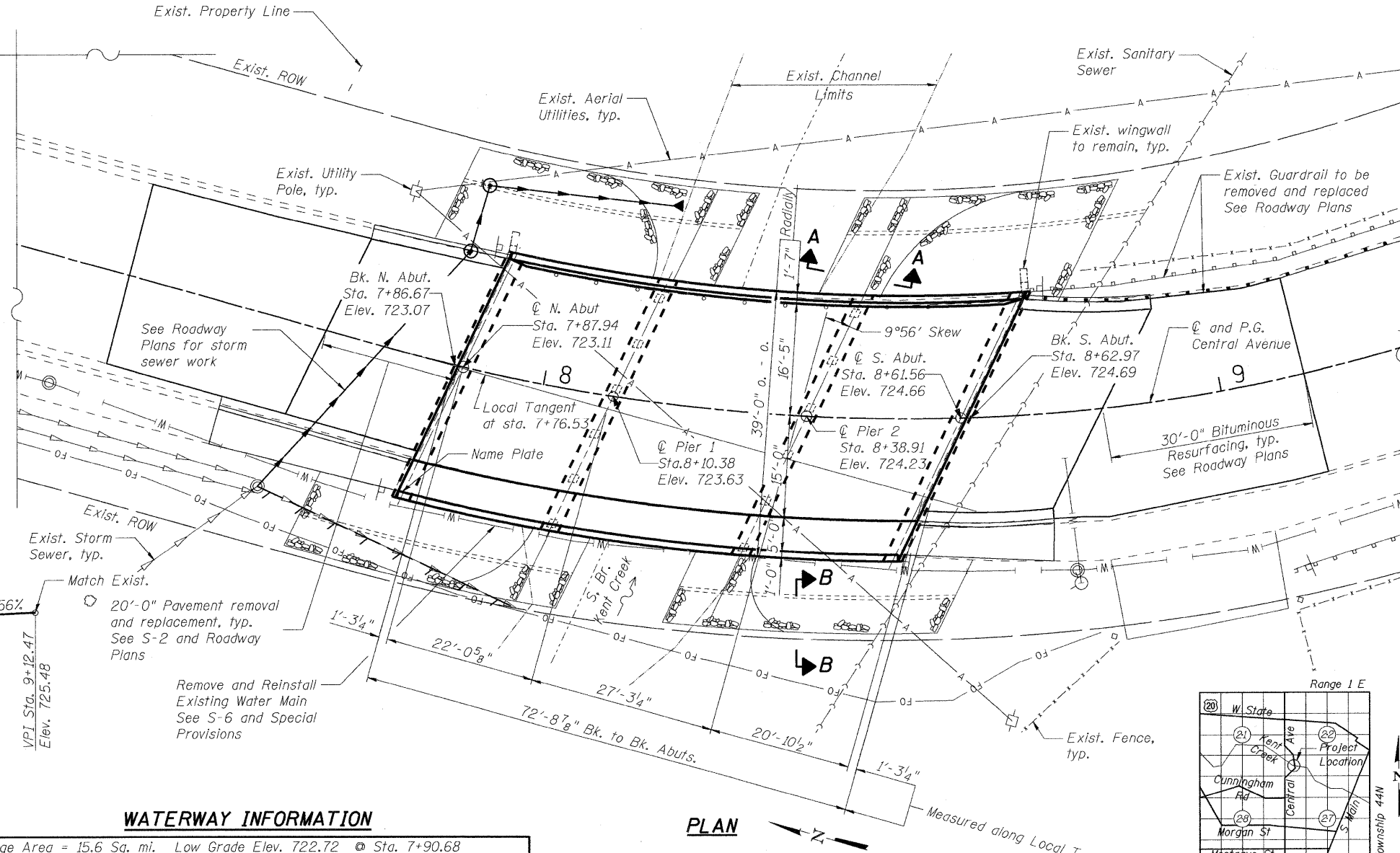


**PROFILE GRADE**  
 Central Avenue

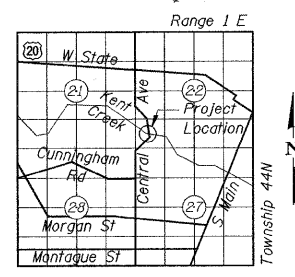
**WATERWAY INFORMATION**

Drainage Area = 15.6 Sq. mi. Low Grade Elev. 722.72 @ Sta. 7+90.68

Flood	Freq. Yr.	Q C.F.S.	Opening Sq. Ft.		Nat. H.W.E.	Head - Ft.		Headwater El.	
			Exist.	Prop.		Exist.	Prop.	Exist.	Prop.
Design	10	-	-	-	719.40	-	-	-	-
Base	100	1600	841	841	720.70	-	-	-	-
Overtopping	500	-	-	-	721.40	-	-	-	-



**PLAN**



**LOCATION SKETCH**

**GENERAL PLAN AND ELEVATION**

**CENTRAL AVENUE (FAU ROUTE 5102)  
 OVER KENT CREEK  
 SECTION NO. 09-00557-00-BR  
 CITY OF ROCKFORD  
 WINNEBAGO COUNTY  
 STRUCTURE NO. 101-6124**

DATE: 1/26/10

FILE NAME: 090026-ape.dgn  
 PLOT DRIVER: pdf.plt  
 PEN TABLE: standard-trans.tbl 1/26/2010



Illinois Professional Design Firm # 184-000106  
**SEC GROUP, INC.**  
 An HR Green Company  
 420 N. Front Street, McHenry, IL 60050  
 815.385.1778 F. 815.385.1781  
 www.secgroupinc.com  
 • McHenry, IL • Yorkville, IL • New Lenox, IL • Chicago, IL

SHEET NO. <b>S-1</b>  S-9 SHEETS	F.A.U. RTE. 5102	SECTION 09-00557-00-BR	COUNTY WINNEAGO	TOTAL SHEETS 18	SHEET NO. 8
	CONTRACT NO. 85508		FED. ROAD DIST. NO. 2 ILLINOIS FED. AID PROJECT BHM 5099 (081)		



**GENERAL NOTES:**

STATE OF ILLINOIS  
DEPARTMENT OF TRANSPORTATION

Reinforcement bars shall conform to the requirements of ASTM A 706 Gr 60. See Special Provisions.

Reinforcement bars designated (E) shall be epoxy coated.

Plan dimensions and details relative to existing plans are subject to nominal construction variations. The Contractor shall field verify existing dimensions and details affecting new construction and make necessary approved adjustments prior to construction or ordering of materials. Such variations shall not be cause for additional compensation for a change in scope of the work, however, the Contractor will be paid for the quantity actually furnished at the unit price bid for the work.

Layout of Slope Protection System may be varied to suit ground conditions in field as directed by the Engineer.

The Contractor shall make allowance for the deflection of forms, shrinkage and settlement of falsework, in addition to allowance for dead load deflection. Forms for deck slab shall be removed prior to placement of bridge approach pavement.

Excavation behind existing abutment walls shall be performed to balance front and back soil pressure before removing the existing superstructure.

Backfill shall be placed behind the abutment after the superstructure has been poured and falsework removed. See Article 502.10 of the Standard Specifications.

The Contractor shall obtain a construction permit from the Illinois Department of Natural Resources (IDNR), Office of Water Resources for any temporary construction activity not included in Statewide Permit #9. Any permit application by the Contractor shall refer to the IDNR Statewide permit included in the contract documents.

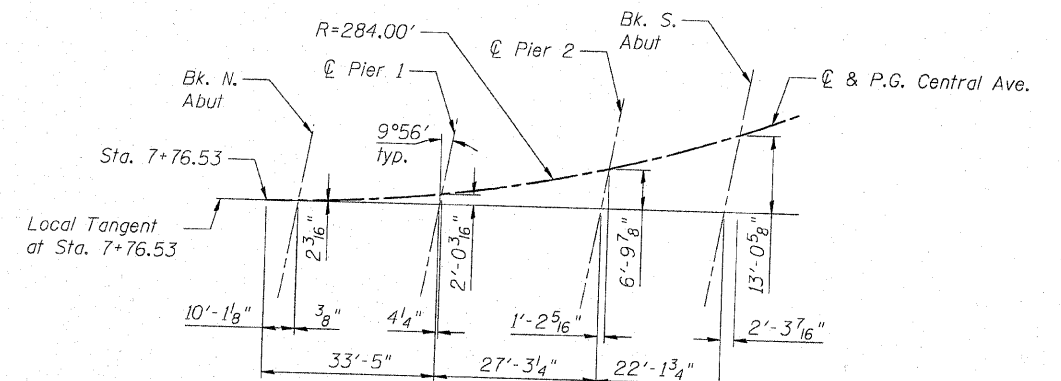
Incidental excavation / shaping required to place Stone Riprap shall be in accordance with the applicable portion of Section 202 of the Standard Specifications. The cost for this work shall be included in Stone Riprap, Class A5.

**INDEX OF SHEETS**

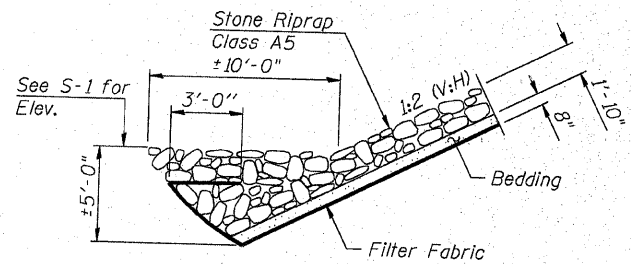
- S-1 General Plan and Elevation
- S-2 General Notes and Total Bill of Materials
- S-3 Top of Slab Elevations
- S-4 Superstructure Plan and Cross Section
- S-5 Superstructure Details
- S-6 Superstructure Details
- S-7 Superstructure Details
- S-8 Aluminum Railing, Type L
- S-9 Substructure Details

**TOTAL BILL OF MATERIAL**

ITEM	UNIT	SUPER	SUB	TOTAL
Porous Granular Embankment, Special	Cu. Yd.	---	32.6	32.6
Stone Riprap, Class A5	Sq. Yd.	---	523	523.0
Filter Fabric	Sq. Yd.	---	523	523.0
Removal of Existing Superstructures	Each	1	---	1
Structure Excavation	Cu. Yd.	---	32.6	32.6
Concrete Superstructure	Cu. Yd.	160.4	---	160.4
Bridge Deck Grooving	Sq. Yd.	246	---	246
Protective Coat	Sq. Yd.	363	---	363
Reinforcement Bars, Epoxy Coated	Pound	42,350	---	42,350
Aluminum Railing, Type L	Foot	72	---	72
Name Plates	Each	1	---	1
Remove and Reinstall Existing Water Main	Foot	74	---	74

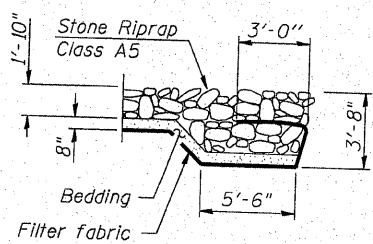


**OFFSET SKETCH**

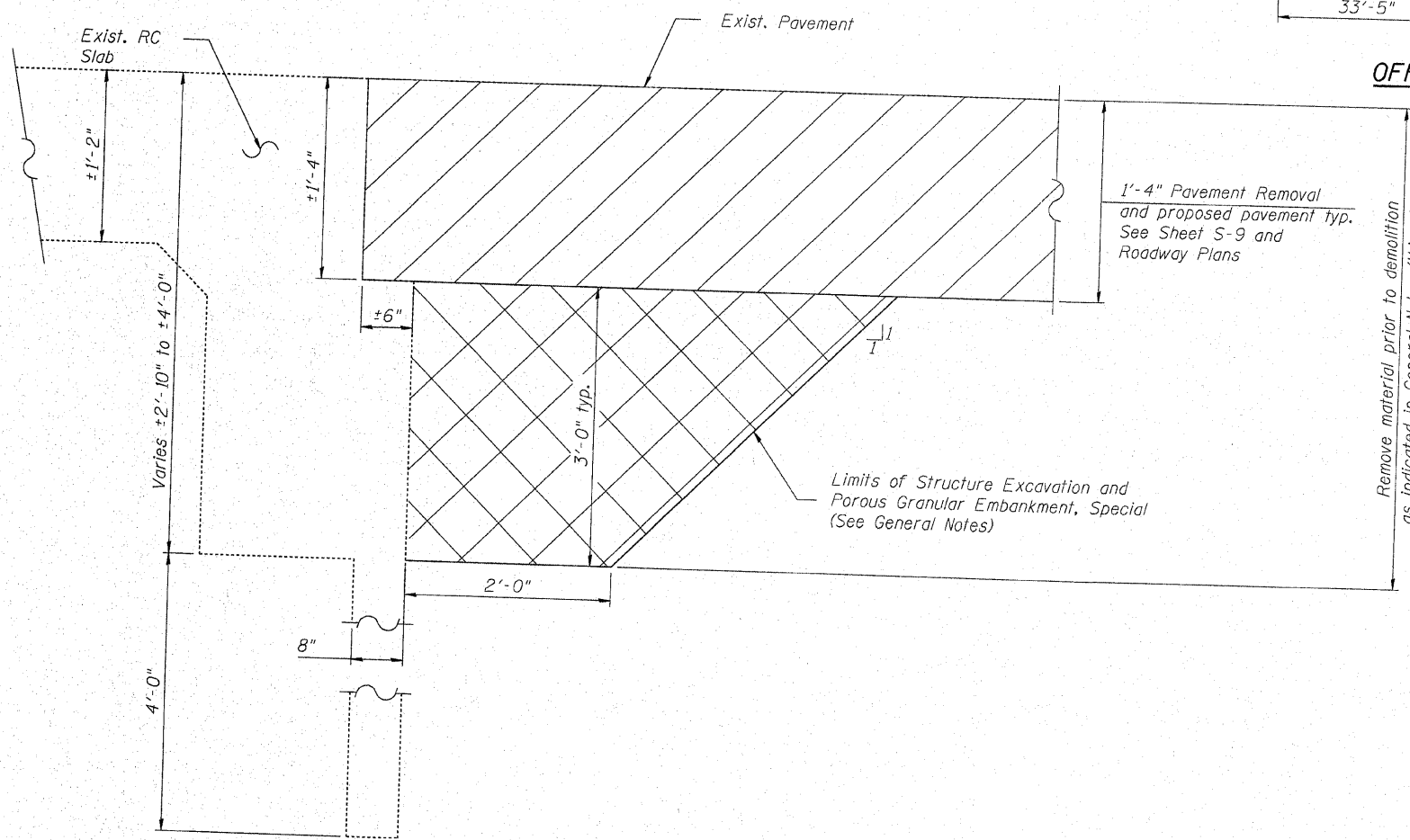


**SECTION A-A**

Modify as shown in the Elevation on S-1 (See General Notes).



**SECTION B-B**



**SECTION THRU ABUTMENT**

Remove material prior to demolition as indicated in General Notes (this sheet)

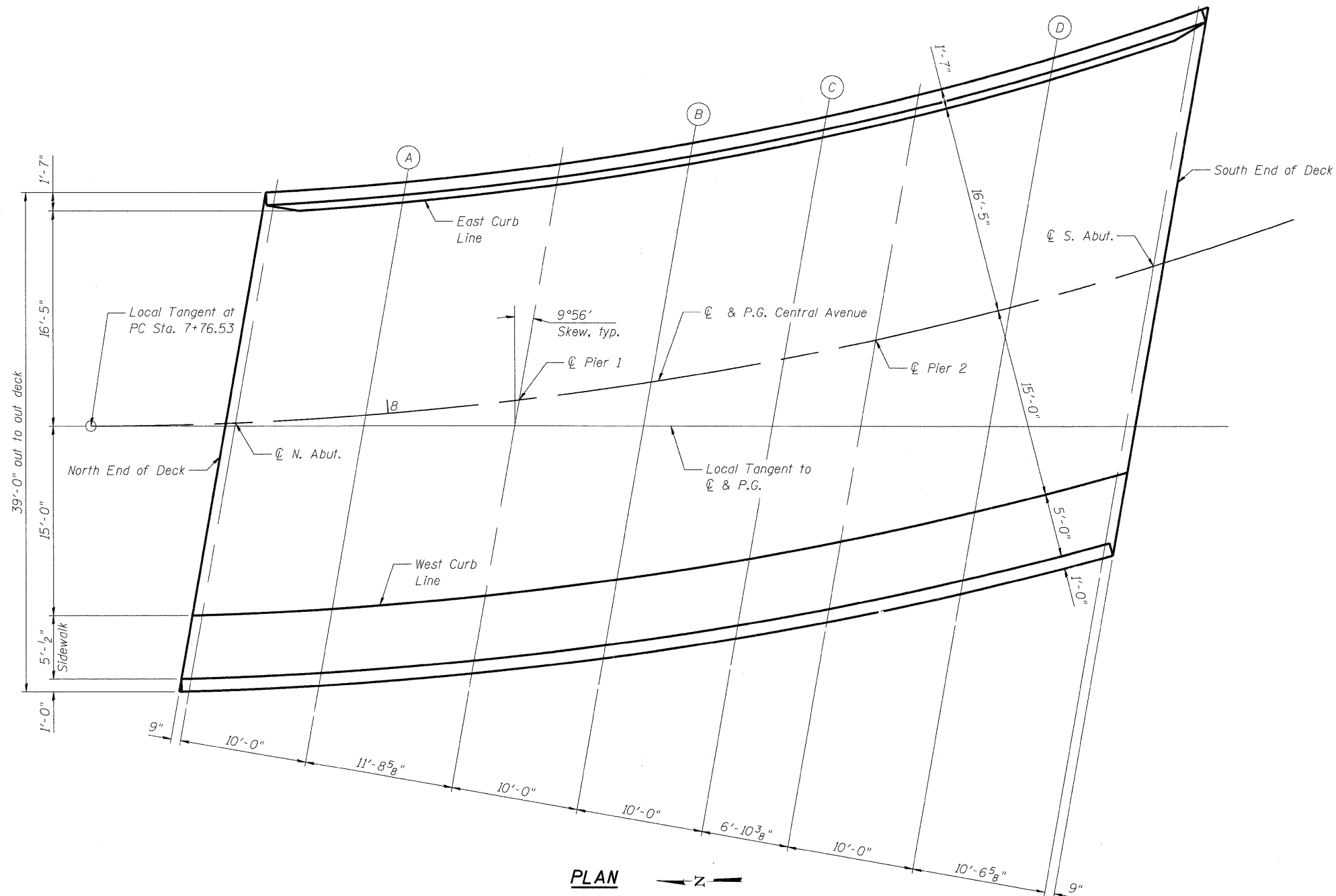
GENERAL NOTES, AND  
TOTAL BILL OF MATERIALS  
CENTRAL AVENUE (FAU ROUTE 5102)  
OVER KENT CREEK  
SECTION NO. 09-00557-00-BR  
CITY OF ROCKFORD  
WINNEBAGO COUNTY  
STRUCTURE NO. 101-6124

DESIGNED	KMA
CHECKED	RGD
DRAWN	WJH
CHECKED	RGD

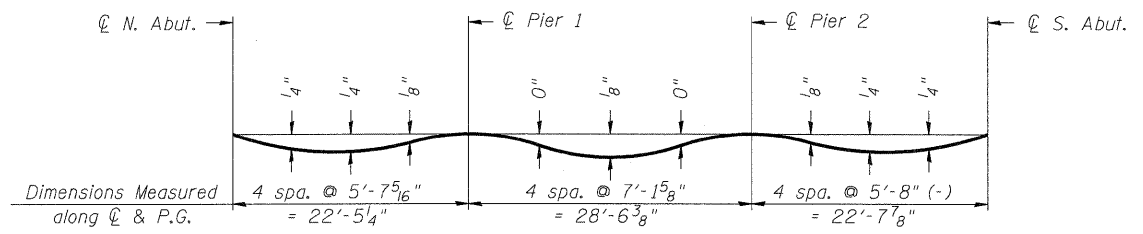
FILE NAME: 090026-gen01.dgn  
PLOT DRIVER: pdf.plt  
PEN TABLE: STANDARD-TRANS.TBL 2/3/10

**SEC GROUP INC.**  
An HR Green Company  
420 N. Front Street, McHenry, IL 60050  
T. 815.385.1778 F. 815.385.1781  
www.secgroupinc.com  
McHenry, IL • Yorkville, IL • New Lenox, IL • Chicago, IL

SHEET NO. S-2		SECTION		COUNTY		TOTAL SHEETS		SHEET NO.	
S-9 SHEETS		09-00557-00-BR		WINNEAGO		18		9	
F.A.U. RTE. 5102		SECTION 09-00557-00-BR		COUNTY WINNEAGO		TOTAL SHEETS 18		SHEET NO. 9	
FED. ROAD DIST. NO. 2		ILLINOIS		FED. AID PROJECT		CONTRACT NO. 85508		DATE: 2/3/10	
						BHM 5099 (081)			



**PLAN** ← Z →



**DEAD LOAD DEFLECTION DIAGRAM**

(Includes weight of concrete only.)

Note:  
The above deflections are not to be used in the field if the engineer is working from the grade elevations adjusted for dead load deflections as shown.

**EAST CURB LINE**

Location	Station	Offset to C & P.G.	Theoretical Grade Elevations	Theoretical Grade Elevations Adjusted For Dead Load Deflection
N. End of Deck	7+90.90	-16.417	722.68	722.68
C N. Abut.	7+91.72	-16.417	722.70	722.70
A	8+02.66	-16.417	722.92	722.94
C Pier 1	8+15.64	-16.417	723.14	723.14
B	8+26.86	-16.417	723.33	723.34
C	8+38.25	-16.417	723.52	723.53
C Pier 2	8+46.17	-16.417	723.65	723.65
D	8+57.90	-16.417	723.86	723.88
C S. Abut.	8+70.57	-16.417	724.07	724.07
S. End of Deck	8+71.48	-16.417	724.09	724.09

**CENTERLINE AND PROFILE GRADE LINE**

Location	Station	Offset to C & P.G.	Theoretical Grade Elevations	Theoretical Grade Elevations Adjusted For Dead Load Deflection
N. End of Deck	7+87.17	0.000	723.09	723.09
C N. Abut.	7+87.94	0.000	723.11	723.11
A	7+98.21	0.000	723.35	723.37
C Pier 1	8+10.38	0.000	723.63	723.63
B	8+20.88	0.000	723.86	723.87
C	8+31.52	0.000	724.09	724.10
C Pier 2	8+38.91	0.000	724.23	724.23
D	8+49.83	0.000	724.45	724.47
C S. Abut.	8+61.56	0.000	724.66	724.66
S. End of Deck	8+62.40	0.000	724.68	724.68

**WEST CURB LINE**

Location	Station	Offset to C & P.G.	Theoretical Grade Elevations	Theoretical Grade Elevations Adjusted For Dead Load Deflection
N. End of Deck	7+84.13	15.000	723.47	723.47
C N. Abut.	7+84.85	15.000	723.49	723.49
A	7+94.59	15.000	723.66	723.68
C Pier 1	8+06.10	15.000	724.03	724.03
B	8+16.03	15.000	724.23	724.24
C	8+26.07	15.000	724.47	724.48
C Pier 2	8+33.03	15.000	724.63	724.63
D	8+43.30	15.000	724.86	724.88
C S. Abut.	8+54.32	15.000	725.09	725.09
S. End of Deck	8+55.11	15.000	725.12	725.12

**TOP OF SLAB ELEVATIONS  
CENTRAL AVENUE (FAU ROUTE 5102)  
OVER KENT CREEK  
SECTION NO. 09-00557-00-BR  
CITY OF ROCKFORD  
WINNEBAGO COUNTY  
STRUCTURE NO. 101-6124**

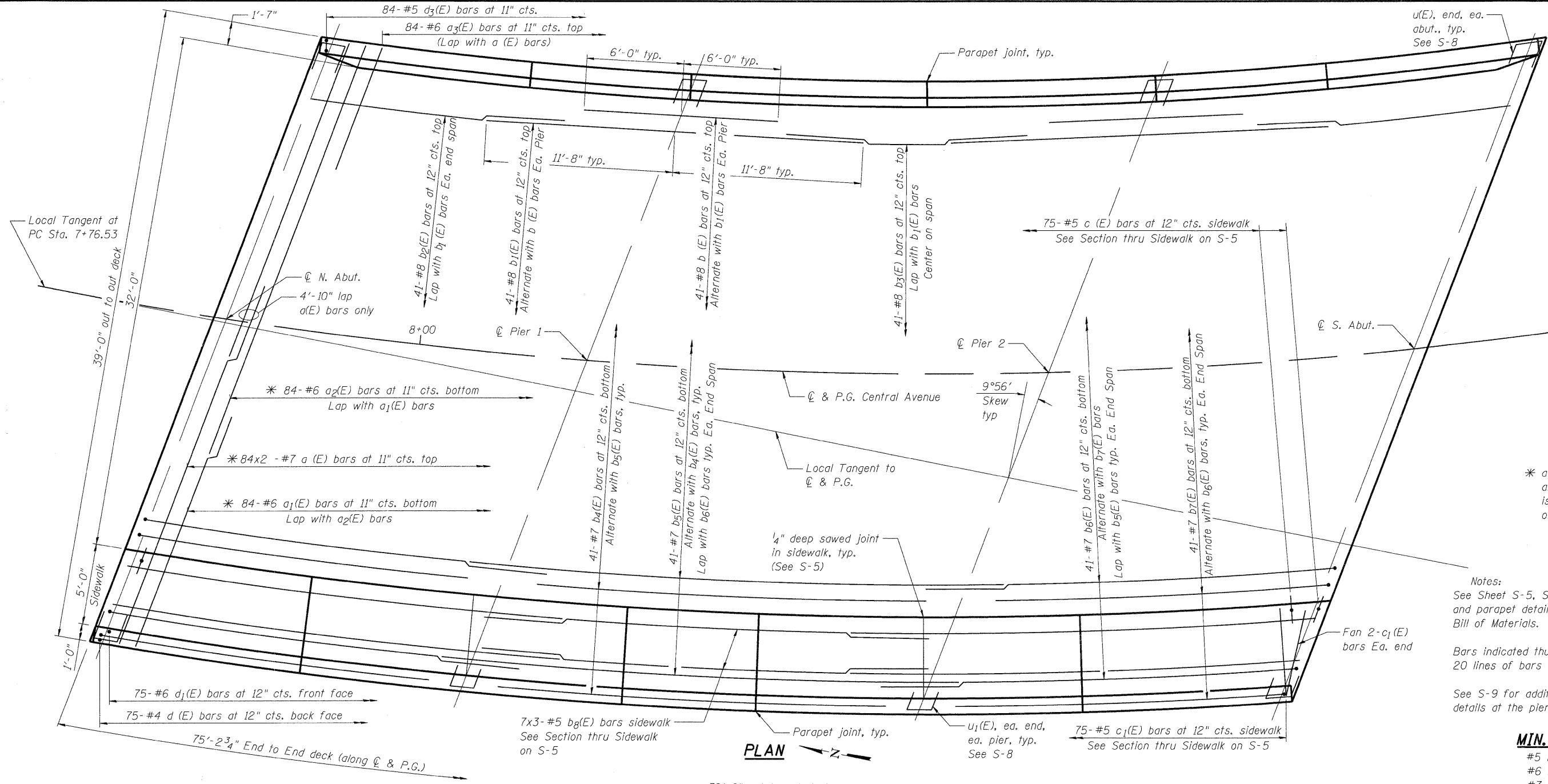
DATE: 1/26/10

DESIGNED	KMA
CHECKED	RGD
DRAWN	WJH
CHECKED	RGD

FILE NAME: 090026-tos01.dgn  
PLOT DRIVER: pdf.plt  
PEN TABLE: standard-trans.tbl 1/26/2010

**SEC GROUP, INC.**  
An HR Green Company  
420 N. Front Street, McHenry, IL 60050  
T. 815.365.1778 F. 815.365.1781  
www.secgroupinc.com  
McHenry, IL • Yorkville, IL • New Lenox, IL • Chicago, IL

SHEET NO. <b>S-3</b>	F.A.U. RTE.	SECTION	COUNTY	TOTAL SHEETS	SHEET NO.
	5102	09-00557-00-BR	WINNEAGO	18	10
<b>S-9</b> SHEETS			CONTRACT NO. 85508		
FED. ROAD DIST. NO. 2		ILLINOIS	FED. AID PROJECT		BHM 5099 (081)

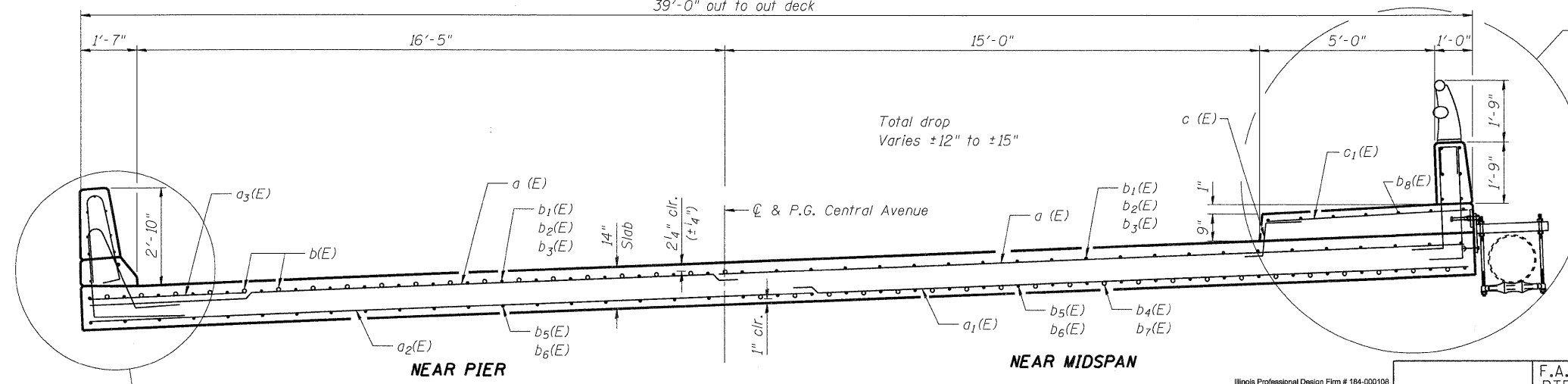


\* Order a(E) a<sub>1</sub>(E) and c<sub>1</sub>(E) bars full length. Cut to fit skew and use remainder of bars in opposite end.

\* a bars placed parallel to abutments, but spacing is measured along centerline of Central Avenue

Notes:  
See Sheet S-5, S-6 and S-7 for additional superstructure and parapet details. See S-7 for Superstructure Bill of Materials.  
Bars indicated thus 20 x 3-#5 etc. indicates 20 lines of bars with 3 lengths per line.  
See S-9 for additional reinforcement and details at the piers and abutments.

**MIN. BAR LAP**  
#5 bar = 2'-2"  
#6 bar = 2'-7"  
#7 bar = 2'-8"  
#8 bar = 4'-10"



**SUPERSTRUCTURE PLAN AND CROSS SECTION**  
**CENTRAL AVENUE (FAU ROUTE 5102) OVER KENT CREEK**  
**SECTION NO. 09-00557-00-BR**  
**CITY OF ROCKFORD**  
**WINNEBAGO COUNTY**  
**STRUCTURE NO. 101-6124**

DATE: 1/26/10

DESIGNED	KMA
CHECKED	RGD
DRAWN	WJH
CHECKED	RGD

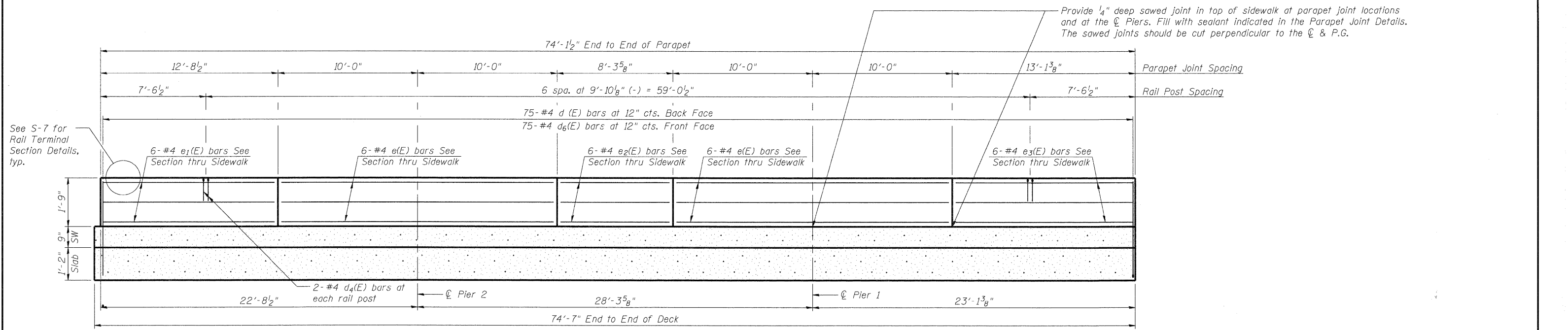
FILE NAME: 090026-sup01.dgn  
PLOT DRIVER: pdf.plt  
PEN TABLE: standard-trans.tbl 1/26/2010

**CROSS SECTION**  
Dimensions Perpendicular to & P.G. Central Avenue



Illinois Professional Design Firm # 184-000108  
**SEC GROUP INC.**  
An HR Green Company  
420 N. Front Street, McHenry, IL 60050  
t. 815.385.1778 f. 815.385.1761  
www.secgroupinc.com  
McHenry, IL • Yorkville, IL • New Lenox, IL • Chicago, IL

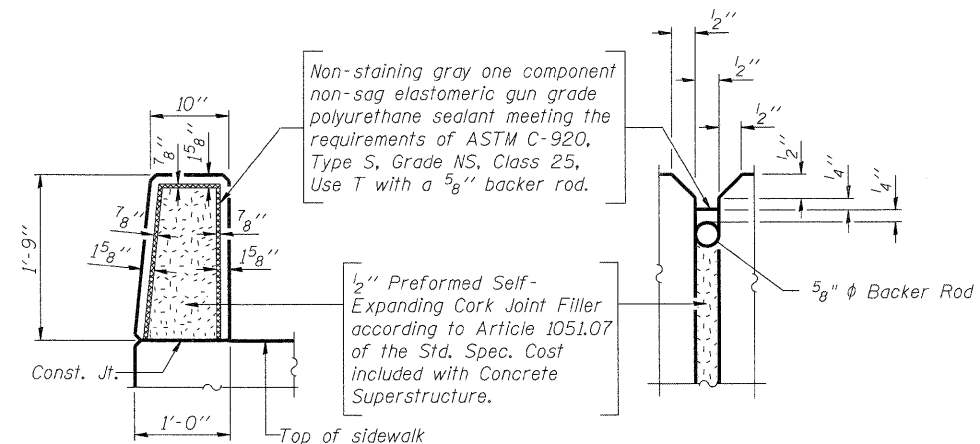
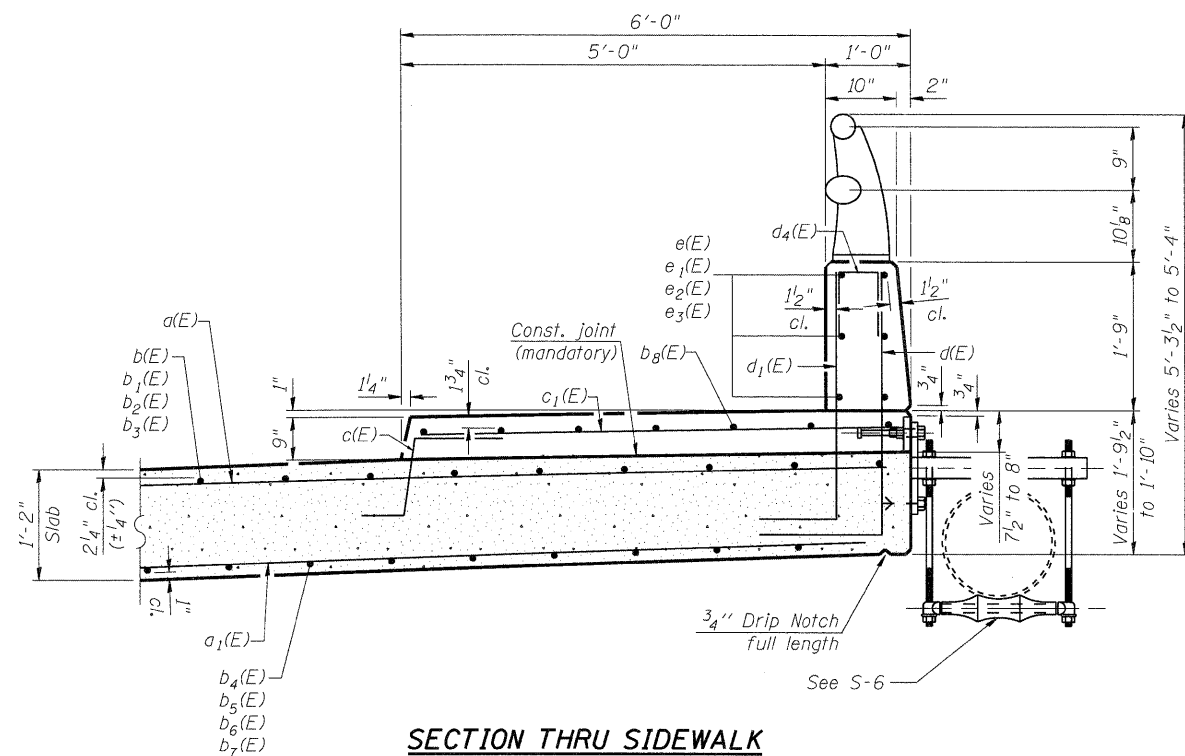
SHEET NO. S-4	F.A.U. RTE.	SECTION	COUNTY	TOTAL SHEETS	SHEET NO.
	5102	09-00557-00-BR	WINNEAGO	18	11
S-9 SHEETS	CONTRACT NO.			85508	
FED. ROAD DIST. NO. 2		ILLINOIS	FED. AID PROJECT	BHM 5099 (081)	



**MINIMUM BAR LAP**  
(Parapet)  
#4 bar = 1'-8"

**INSIDE ELEVATION OF WEST PARAPET**

All dimensions measured along front face of parapet



**PARAPET JOINT DETAILS**

**SUPERSTRUCTURE DETAILS**  
CENTRAL AVENUE (FAU ROUTE 5102)  
OVER KENT CREEK  
SECTION NO. 09-00557-00-BR  
CITY OF ROCKFORD  
WINNEBAGO COUNTY  
STRUCTURE NO. 101-6124

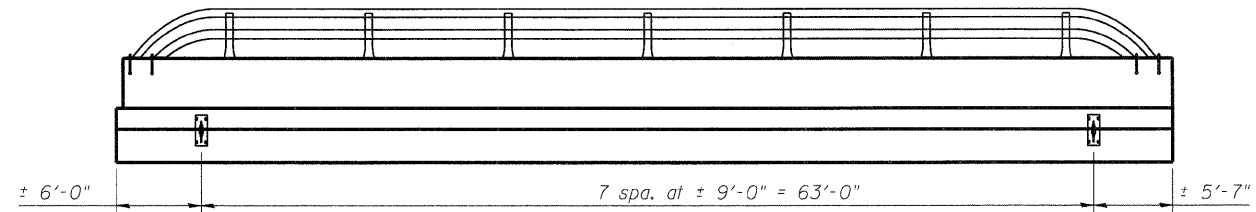
DATE: 1/26/10

DESIGNED	KMA
CHECKED	RGD
DRAWN	WJH
CHECKED	RGD

FILE NAME: 090026-sup02.dgn  
PLOT DRIVER: pdt.plt  
PEN TABLE: standard-trans.tbl 1/26/2010

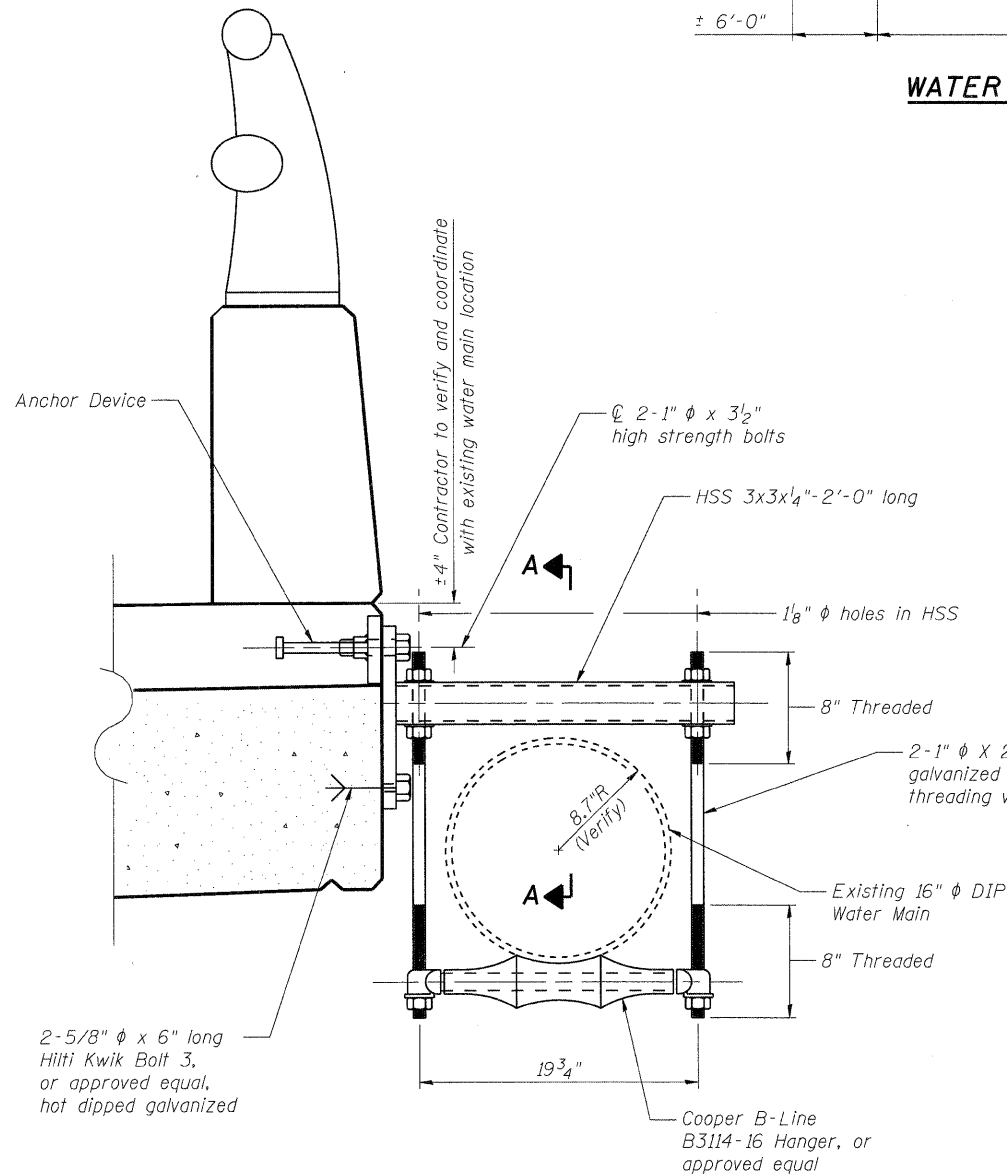
**SEC GROUP, INC.**  
An HR Green Company  
420 N. Front Street, McHenry, IL 60050  
1-815-385-1778 F: 815-385-1781  
www.secgroupinc.com  
• McHenry, IL • Yorkville, IL • New Lenox, IL • Chicago, IL

SHEET NO. <b>S-5</b>	F.A.U. RTE.	SECTION	COUNTY	TOTAL SHEETS	SHEET NO.
	5102	09-00557-00-BR	WINNEAGO	18	12
S-9 SHEETS				CONTRACT NO. 85508	
FED. ROAD DIST. NO. 2		ILLINOIS	FED. AID PROJECT	BHM 5099 (081)	



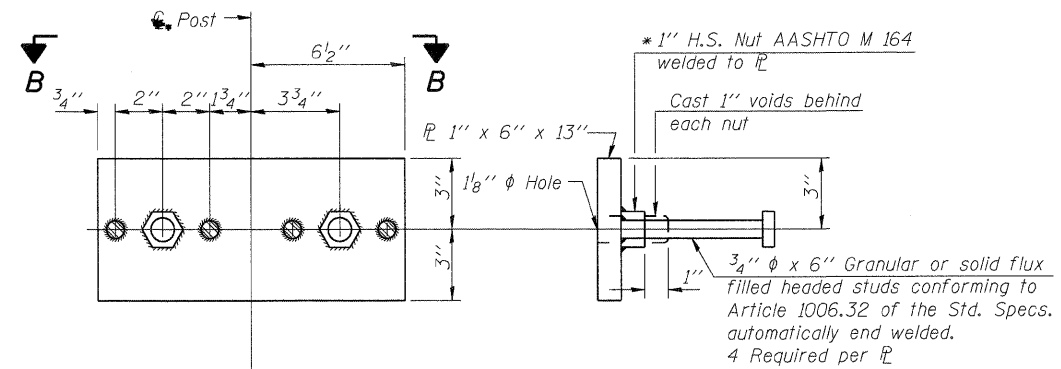
**WATER MAIN HANGER LAYOUT - ELEVATION OF WEST FACE**

Coordinate layout with existing water main to be re-used.



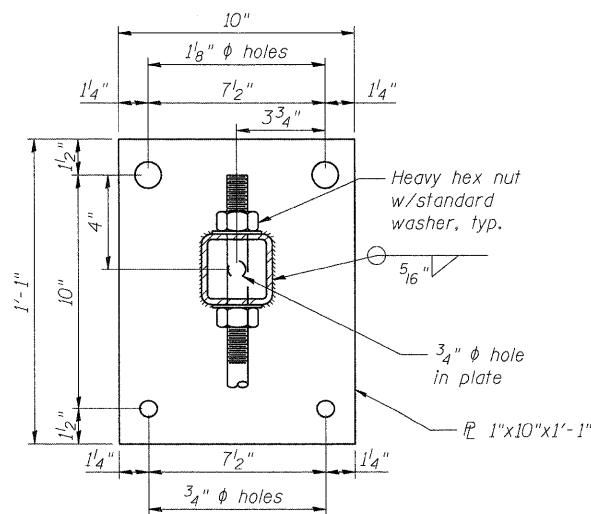
**WATER MAIN HANGER DETAIL**

(8 Assemblies req'd)



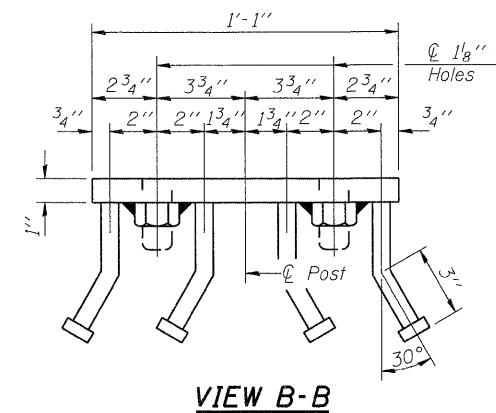
**ANCHOR DEVICE**

\* Threaded areas shall be plugged or blocked off during casting of beam.



**VIEW A-A**

Water Main not shown for clarity



**VIEW B-B**

**NOTES**

1. Hollow structural steel tubing shall conform to the requirements of ASTM designation A500 Grade B Structural Steel Tubing and shall meet the longitudinal CVN requirements of 15 ft.-lbs. at 0° F.
2. All other steel shapes and plates shall conform to the requirements of AASHTO M 270 Grade 36.
3. Bolts and nuts shall conform to the requirements of ASTM designation A307 except for high strength bolts, nuts and washers noted which shall conform to AASHTO M 164.
4. All bolts, nuts, washers and lock washers shall be galvanized according to AASHTO M 232.
5. All anchor devices plates and HSS shall be galvanized after shop fabrication according to AASHTO M-111 and ASTM A 385.
6. The 1" φ high strength bolts connecting the plate to the concrete shall be tightened to a snug fit and given an additional 1/8 turn.

**SUPERSTRUCTURE DETAILS**  
**CENTRAL AVENUE (FAU ROUTE 5102)**  
**OVER KENT CREEK**  
**SECTION NO. 09-00557-00-BR**  
**CITY OF ROCKFORD**  
**WINNEBAGO COUNTY**  
**STRUCTURE NO. 101-6124**

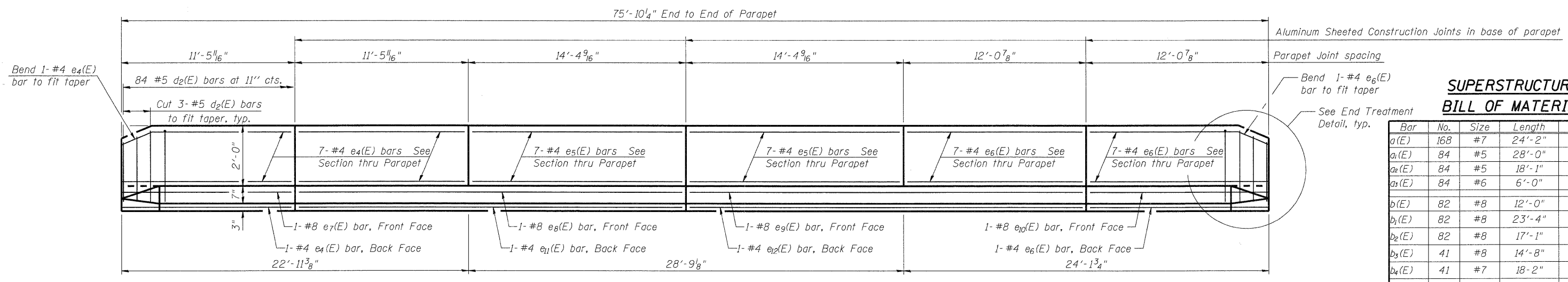
DATE: 1/26/10

DESIGNED	KMA
CHECKED	RGD
DRAWN	WJH
CHECKED	RGD

FILE NAME: 090026-sup03.dgn  
 PLOT DRIVER: pdf.plt  
 PEN TABLE: standard-trans.tbl 1/26/2010

Illinois Professional Design Firm # 184-000108  
**SEC GROUP, INC.**  
 An HR Green Company  
 420 N. Front Street, McHenry, IL 60050  
 T. 815.385.1778 F. 815.385.1781  
 www.secgroupinc.com  
 \* McHenry, IL • Yorkville, IL • New Lenox, IL • Chicago, IL

SHEET NO. <b>5-6</b>	F.A.U. RTE.	SECTION	COUNTY	TOTAL SHEETS	SHEET NO.
	5102	09-00557-00-BR	WINNEAGO	18	13
S-9 SHEETS			CONTRACT NO. 85508		
FED. ROAD DIST. NO. 2		ILLINOIS	FED. AID PROJECT		BHM 5099 (081)



**SUPERSTRUCTURE  
BILL OF MATERIAL**

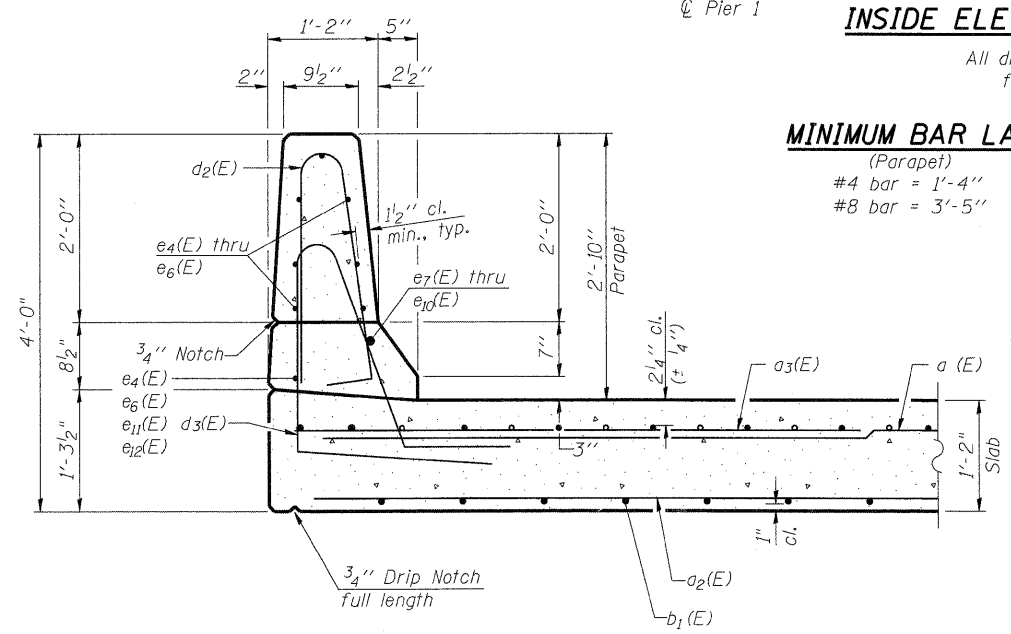
Bar	No.	Size	Length	Shape
a(E)	168	#7	24'-2"	—
a <sub>1</sub> (E)	84	#5	28'-0"	—
a <sub>2</sub> (E)	84	#5	18'-1"	—
a <sub>3</sub> (E)	84	#6	6'-0"	—
b(E)	82	#8	12'-0"	—
b <sub>1</sub> (E)	82	#8	23'-4"	—
b <sub>2</sub> (E)	82	#8	17'-1"	—
b <sub>3</sub> (E)	41	#8	14'-8"	—
b <sub>4</sub> (E)	41	#7	18'-2"	—
b <sub>5</sub> (E)	41	#7	31'-0"	—
b <sub>6</sub> (E)	82	#7	25'-2"	—
b <sub>7</sub> (E)	82	#7	18'-9"	—
b <sub>8</sub> (E)	21	#5	26'-0"	—
c(E)	75	#5	2'-5"	—
c <sub>1</sub> (E)	75	#5	5'-8"	—
d(E)	75	#4	4'-10"	L
d <sub>1</sub> (E)	75	#6	4'-0"	L
d <sub>2</sub> (E)	84	#5	5'-7"	I
d <sub>3</sub> (E)	84	#5	7'-10"	L
d <sub>4</sub> (E)	14	#4	2'-0"	I
e(E)	12	#4	19'-8"	—
e <sub>1</sub> (E)	6	#4	12'-1"	—
e <sub>2</sub> (E)	6	#4	7'-11"	—
e <sub>3</sub> (E)	6	#4	12'-9"	—
e <sub>4</sub> (E)	15	#4	11'-1"	—
e <sub>5</sub> (E)	14	#4	14'-0"	—
e <sub>6</sub> (E)	15	#4	11'-8"	—
e <sub>7</sub> (E)	1	#8	11'-1"	—
e <sub>8</sub> (E)	1	#8	25'-6"	—
e <sub>9</sub> (E)	1	#8	26'-1"	—
e <sub>10</sub> (E)	1	#8	11'-8"	—
e <sub>11</sub> (E)	1	#4	25'-6"	—
e <sub>12</sub> (E)	1	#4	26'-1"	—
f(E)	12	#7	23'-4"	—
u(E)	8	#5	6'-1"	—
u <sub>1</sub> (E)	8	#5	6'-7"	—
Reinforcement Bars, Epoxy Coated			Pound	42,350
Concrete Superstructure			Cu. Yds.	160.4

**INSIDE ELEVATION OF EAST PARAPET**

All dimensions measured along front face of parapet

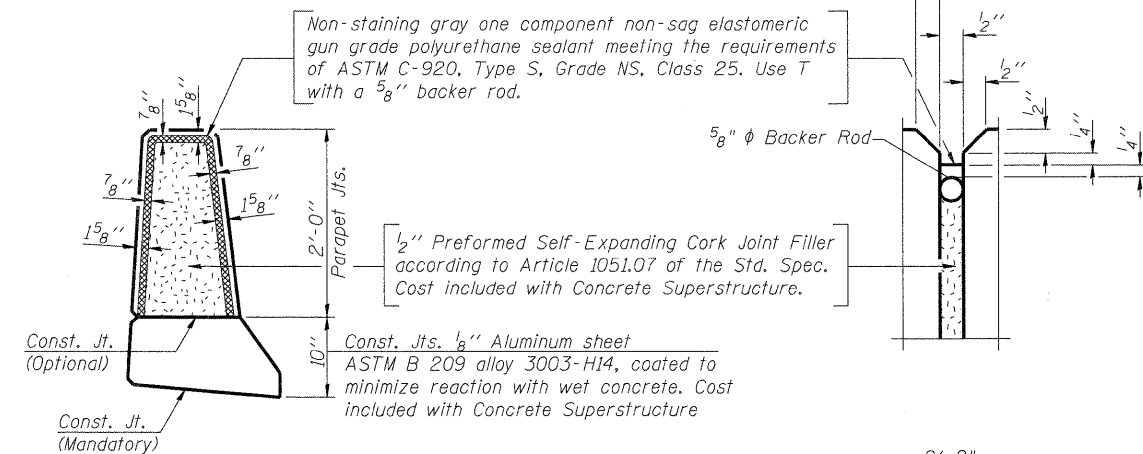
**MINIMUM BAR LAP**

(Parapet)  
#4 bar = 1'-4"  
#8 bar = 3'-5"

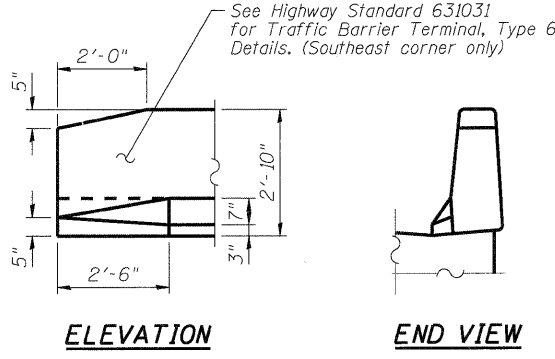
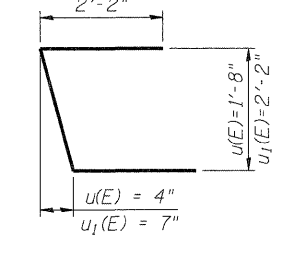


**SECTION THRU PARAPET**

**PARAPET JOINT DETAILS**



**BARS u(E), & u<sub>1</sub>(E)**

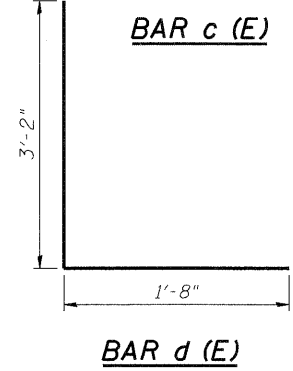


**ELEVATION**

**END VIEW**

**END TREATMENT DETAIL**

Not to Scale



**BAR c(E)**

**BAR d<sub>1</sub>(E)**

**BAR d<sub>2</sub>(E)**

**BAR d<sub>3</sub>(E)**

**BAR d<sub>4</sub>(E)**

**BARS b<sub>6</sub>(E), & b<sub>7</sub>(E)**

**BAR d(E)**

**SUPERSTRUCTURE DETAILS**  
CENTRAL AVENUE (FAU ROUTE 5102)  
OVER KENT CREEK  
SECTION NO. 09-00557-00-BR  
CITY OF ROCKFORD  
WINNEBAGO COUNTY  
STRUCTURE NO. 101-6124

DESIGNED	KMA
CHECKED	RGD
DRAWN	WJH
CHECKED	RGD

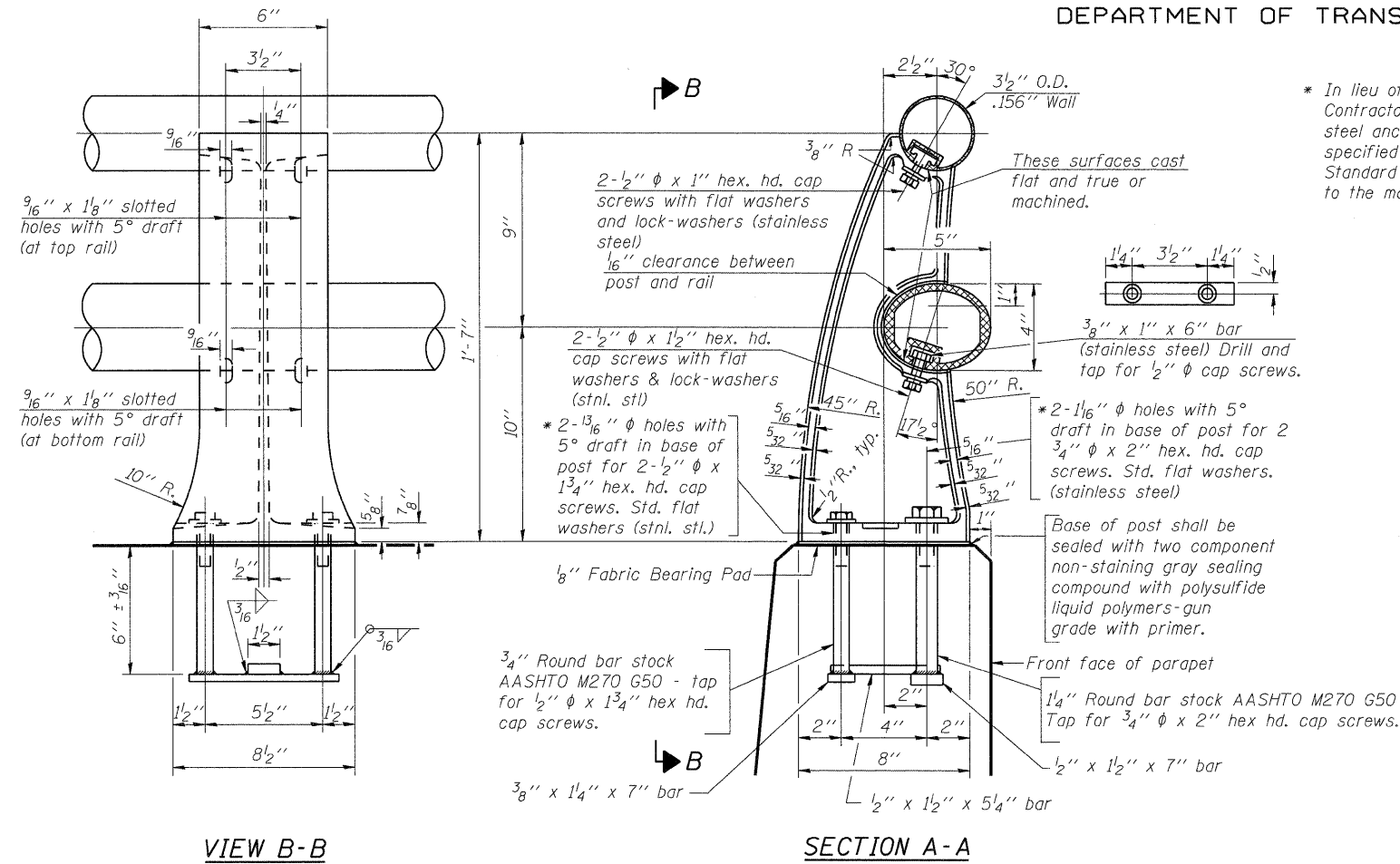
FILE NAME: 090026-sup04.dgn  
PLOT DRIVER: pdt.plt  
PEN TABLE: standard-trans.tbl 1/26/2010

**SEC GROUP, INC.**  
An HR Green Company  
420 N. Front Street, McHenry, IL 60050  
1-815-385-1778 1-815-385-1781  
www.secgroupinc.com  
McHenry, IL • Yorkville, IL • New Lenox, IL • Chicago, IL

SHEET NO. <b>5-7</b>	F.A.U. RTE.	SECTION	COUNTY	TOTAL SHEETS	SHEET NO.
	5102	09-00557-00-BR	WINNEAGO	18	14
S-9 SHEETS			CONTRACT NO. 85508		
FED. ROAD DIST. NO. 2 ILLINOIS		FED. AID PROJECT		BHM 5099 (C61)	

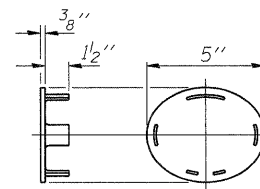
DATE: 1/26/10

STATE OF ILLINOIS  
DEPARTMENT OF TRANSPORTATION

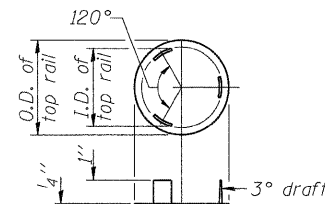


RAIL POST DETAILS

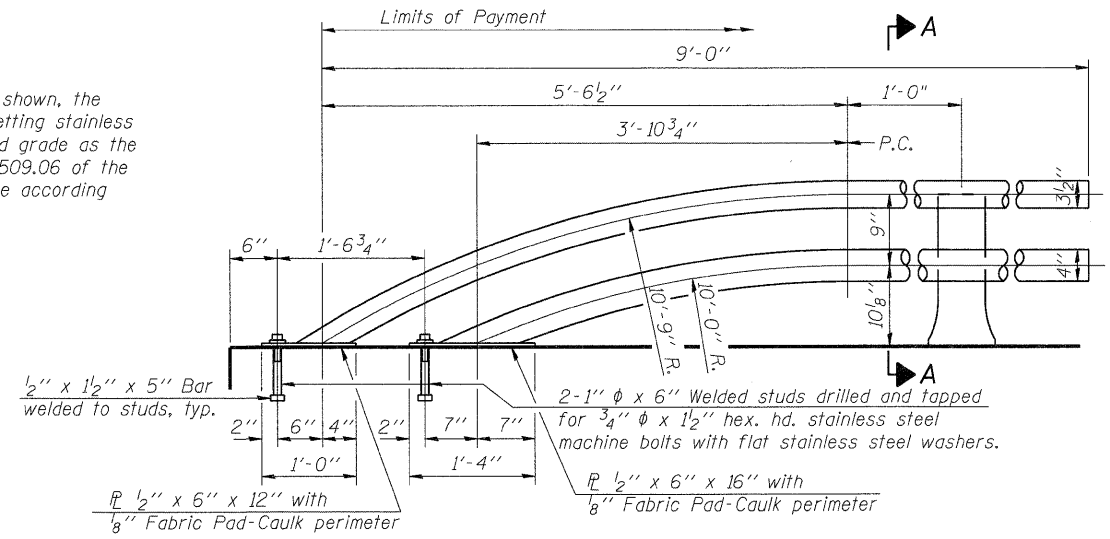
\* In lieu of the cast-in-place anchor device shown, the Contractor has the option of drilling and setting stainless steel anchor rods of the same diameter and grade as the specified cap screws according to Article 509.06 of the Standard Specifications. Embedment shall be according to the manufacturer's specifications.



CAST END CAP  
For bottom rail  
DRIVE FIT TYPE

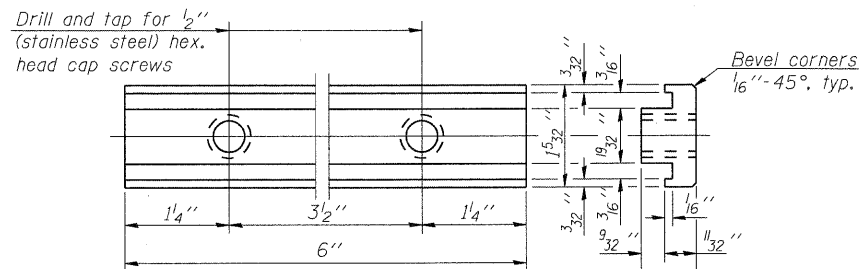


CAST END CAP  
For top rail

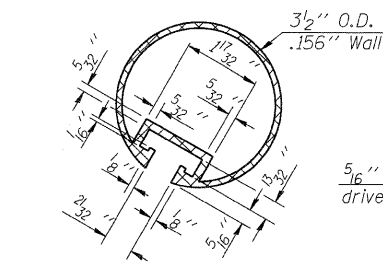


RAIL TERMINAL SECTION

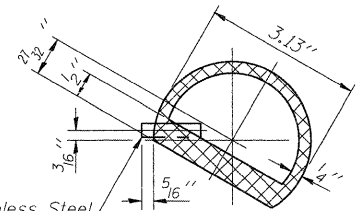
Note:  
The end rail post shall be set back as required for the terminal rail section.



RAIL POST CLAMP BAR  
For Top Rail



SECTION THRU TOP RAIL

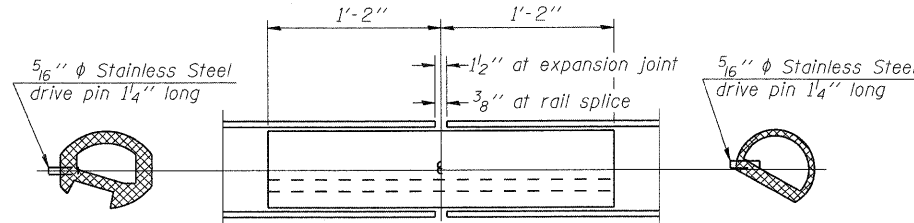


SECTION THRU SPLICE  
For Top Rail

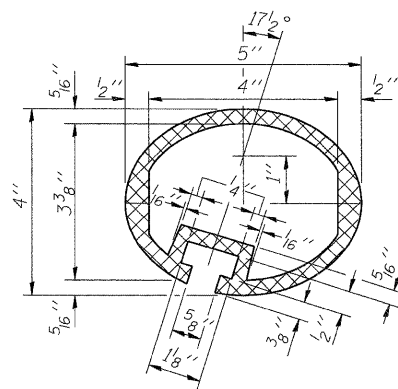
Notes:  
All Posts shall be normal to parapet.  
All joints in rail shall be spliced per detail.  
All exposed rail ends shall be capped per detail.  
Provide 1-1/8" and 2-1/16" Aluminum Shims for 25% of the Posts. Rail elements shall be parallel to Grade-high spots will be ground and low spots shimmed.  
See sheet S-5 of S-9 for rail post spacing.

BILL OF MATERIAL

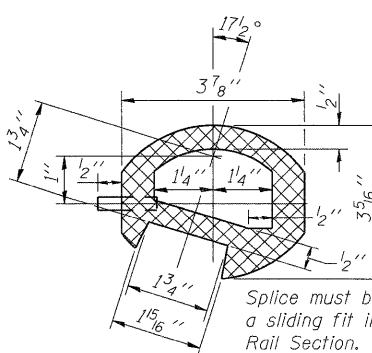
Item	Unit	Quantity
Aluminum Railing, Type L	Foot	72



RAIL SPLICE



SEC. THRU ELLIPTICAL  
RAIL SECTION



SEC. THRU SPLICE

ALUMINUM RAILING, TYPE L  
CENTRAL AVENUE (FAU ROUTE 5102)  
OVER KENT CREEK  
SECTION NO. 09-00557-00-BR  
CITY OF ROCKFORD  
WINNEBAGO COUNTY  
STRUCTURE NO. 101-6124

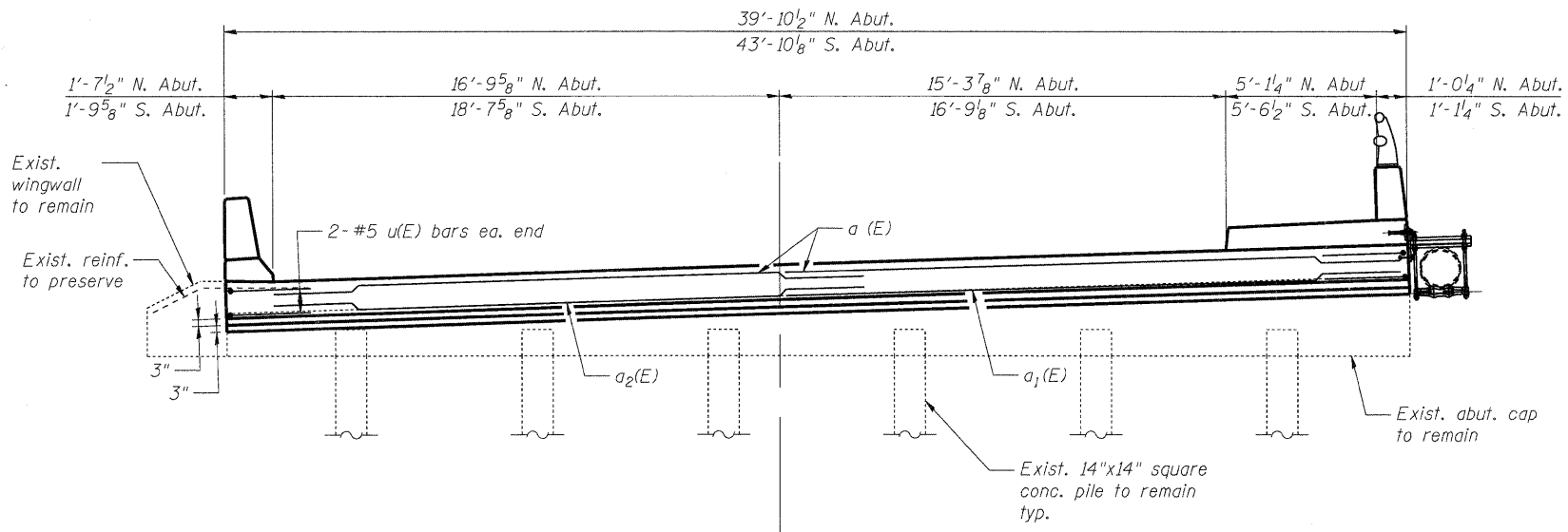
DATE: 1/26/10

DESIGNED	KMA
CHECKED	RGD
DRAWN	WJH
CHECKED	RGD

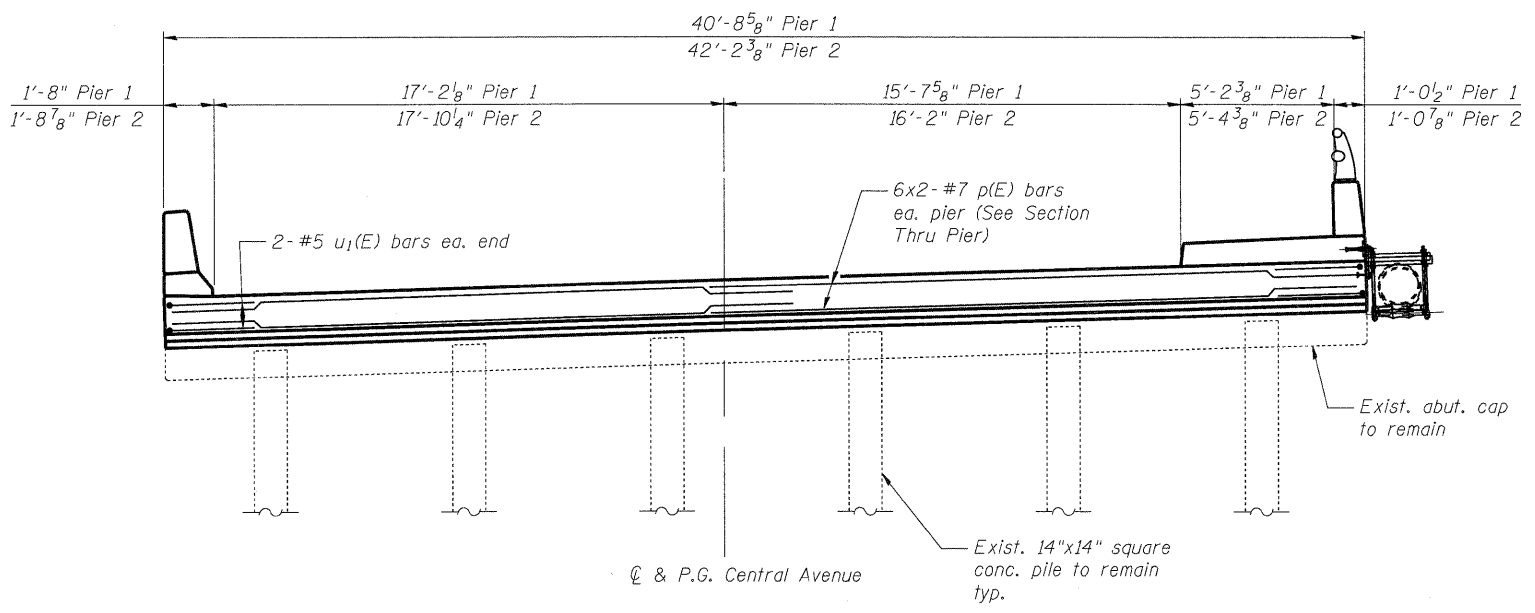
FILE NAME: 090056-rail.dgn  
PLOT DATE: 2/20/10  
PEN TABLE: STANDARD-TRANS.TB  
1/27/2010 11-1-09 (7'-0" to 10'-0" Post spacing)

Illinois Professional Design Firm # 184-000108  
**SEC GROUP, INC.**  
An HR Green Company  
420 N. Front Street, McHenry, IL 60050  
L 815.385.1778 F 815.385.1781  
www.secgroupinc.com  
McHenry, IL • Yorkville, IL • New Lenox, IL • Chicago, IL

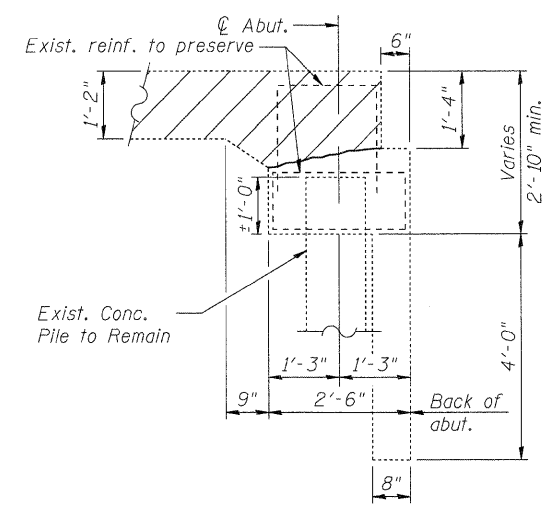
SHEET NO.	F.A.U. RTE.	SECTION	COUNTY	TOTAL SHEETS	SHEET NO.
S-8	5102	09-00557-00-BR	WINNEAGO	18	15
S-9 SHEETS			CONTRACT NO. 85508		
FED. ROAD DIST. NO. 2		ILLINOIS	FED. AID PROJECT	BHM 5099 (081)	



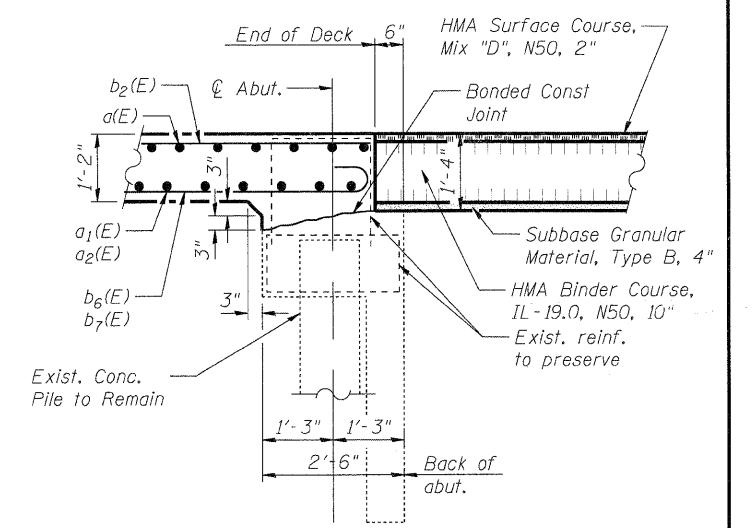
CL & P.G. Central Avenue  
**ABUTMENT ELEVATION**  
 South Abutment looking South  
 (North Abutment similar, but opposite hand)  
 Dimensions along skew



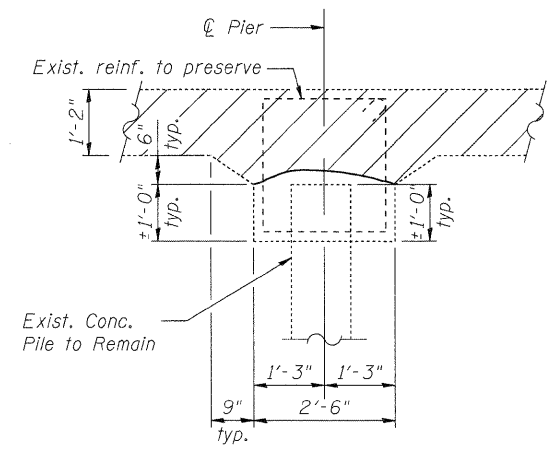
CL & P.G. Central Avenue  
**PIER ELEVATION**  
 Looking South  
 Dimensions along skew



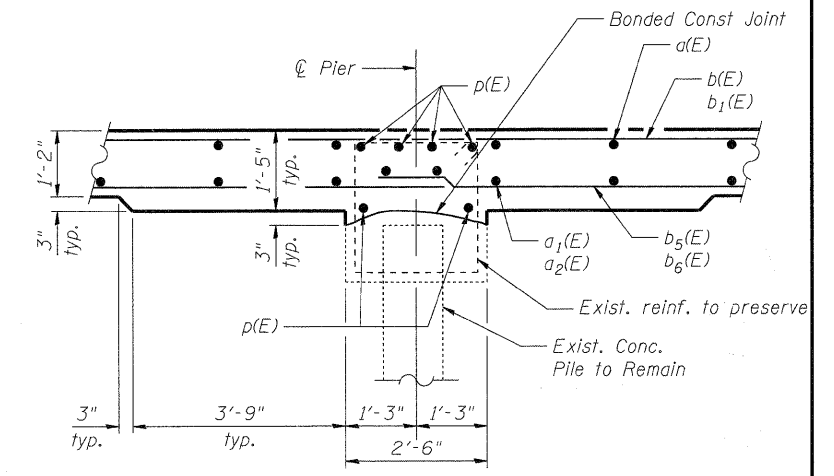
**REMOVAL SECTION THRU ABUT.**



**SECTION THRU ABUT.**



**REMOVAL SECTION THRU PIER**



**SECTION THRU PIER**

**NOTES**

1. See Superstructure Bill of Materials for u(E), u<sub>1</sub>(E), and p(E) bars.
2. Existing reinforcement shall be cleaned and incorporated into the new construction. Cost included in Removal of Existing Superstructures.

**SUBSTRUCTURE DETAILS**  
**CENTRAL AVENUE (FAU ROUTE 5102)**  
**OVER KENT CREEK**  
**SECTION NO. 09-00557-00-BR**  
**CITY OF ROCKFORD**  
**WINNEBAGO COUNTY**  
**STRUCTURE NO. 101-6124**

DATE: 1/26/10

DESIGNED	KMA
CHECKED	RGD
DRAWN	WJH
CHECKED	RGD

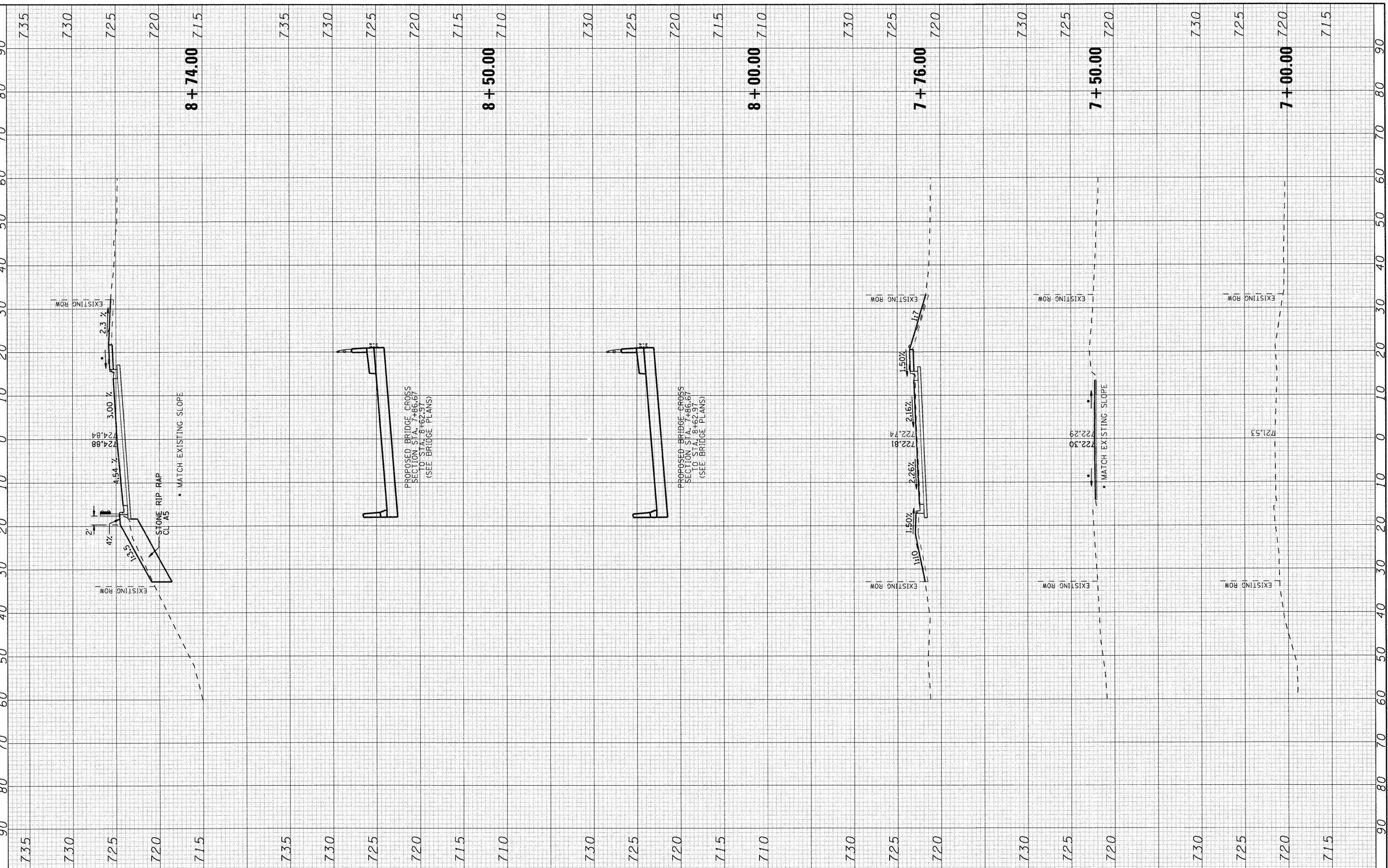
FILE NAME: 090026-sub01.dgn  
 PLOT DRIVER: pdf.plt  
 PEN TABLE: standard-trans.tbl 1/26/2010

**SEC GROUP, INC.**  
 An HR Green Company  
 420 N. Front Street, McHenry, IL 60050  
 T. 815.385.1778 F. 815.385.1781  
 www.secgroupinc.com  
 • McHenry, IL • Yorkville, IL • New Lanox, IL • Chicago, IL

SHEET NO. <b>S-9</b>	F.A.U. RTE.	SECTION	COUNTY	TOTAL SHEETS	SHEET NO.
	5102	09-00557-00-BR	WINNEAGO	18	16
S-9 SHEETS			CONTRACT NO. 85508		
FED. ROAD DIST. NO. 2		ILLINOIS	FED. AID PROJECT		BHM 5099 (081)



COMPANY NAME: SEC GROUP, INC.  
 PROJECT CONTACT: Ryan A. Beckwith  
 CLIENT: City of Rockford  
 DATE PLOTTED: 1/26/2010 10:25:17 PM  
 FILE NAME: 090026-xsec.dgn  
 PLOT DRIVER: pdfplot  
 PEN TABLE: standard-trans.tbl



**SEC Group, Inc.**  
 An HR Green Company  
 620 N. Front Street  
 Moline, IL 61901-3138  
 P.O. Box 1778 • 815-336-1781  
 www.secgroup.com  
 \*Moline, IL • Rockford, IL • Star Line, IL • Chicago, IL

USER NAME = whood	DESIGNED - KMA	REVISED -
FILE NAME = 090026-xsec.dgn	DRAWN - WJH	REVISED -
PLOT SCALE =	CHECKED - TH	REVISED -
PLOT DATE = 1/26/2010	DATE - 1/26/10	REVISED -

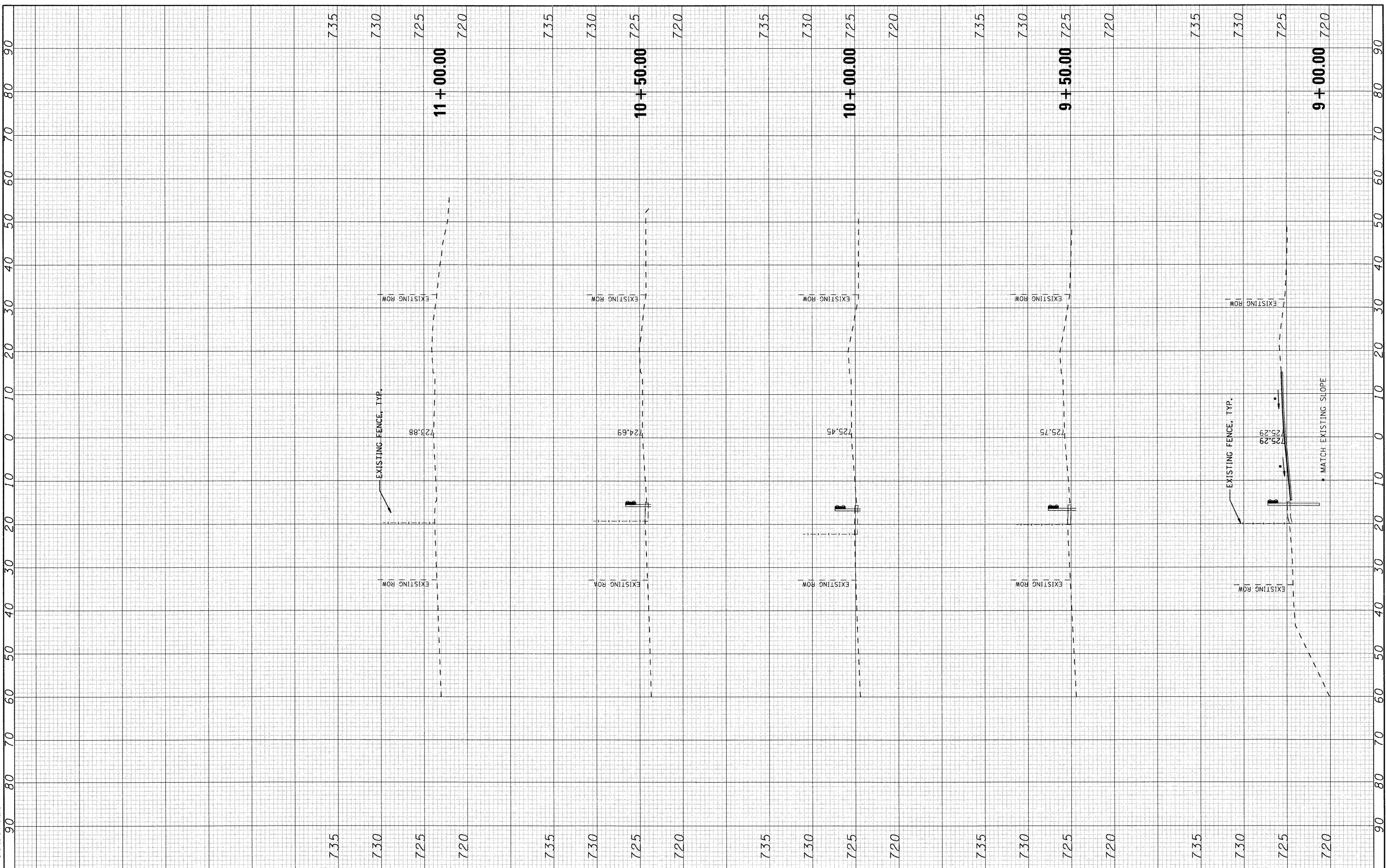
**CITY OF ROCKFORD**

**CENTRAL AVENUE OVER THE SOUTH BRANCH OF KENT CREEK**  
**CROSS SECTIONS**

SCALE: 10H:5V    SHEET NO. 1 OF 2 SHEETS    STA. 7+00.00 TO STA. 8+74.00

F.A.U. RTE. 5102	SECTION 09-00557-00-BR	COUNTY Winnebago	TOTAL SHEETS 18	SHEET NO. 17
FED. ROAD DIST. NO. 2 (ILLINOIS) FED. AID PROJECT			CONTRACT NO. 85508	

COMPANY NAME: SEC GROUP, INC.  
 PROJECT CONTACT: JAMES C. HARRIS  
 CLIENT: CITY OF ROCKFORD  
 DATE PLOTTED: 1/26/2010 10:00:00 PM  
 FILE NAME: 090026-xsec.dgn  
 PLOT DRIVER: pdf.plt  
 PEN TABLE: standard-trans.tbl




**SEC Group, Inc.**  
 An HR Green Company  
 221 N. First Street  
 Moline, IL 61705-1138  
 1 815.365.1778 • 815.365.1781  
 www.secgroup.com  
 McKinstry, IL • Yorkville, IL • New Leno, IL • Chicago, IL

USER NAME = whoad	DESIGNED - KMA	REVISED -
FILE NAME = 090026-xsec.dgn	DRAWN - WJH	REVISED -
PLOT SCALE =	CHECKED - TH	REVISED -
PLOT DATE = 1/26/2010	DATE - 1/26/10	REVISED -

**CITY OF ROCKFORD**

**CENTRAL AVENUE OVER THE SOUTH BRANCH OF KENT CREEK**  
**CROSS SECTIONS**

F.A.U. RTE. 5102	SECTION 09-00557-00-BR	COUNTY Winnebago	TOTAL SHEETS 18	SHEET NO. 18
CONTRACT NO. 85508				
FED. ROAD DIST. NO. 2 [ILLINOIS] FED. AID PROJECT				

SCALE: 10H:5V    SHEET NO. 2 OF 2 SHEETS    STA. 9+00.00 TO STA. 11+50.00