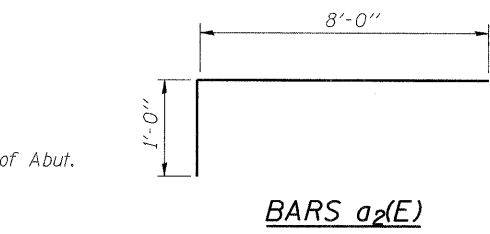
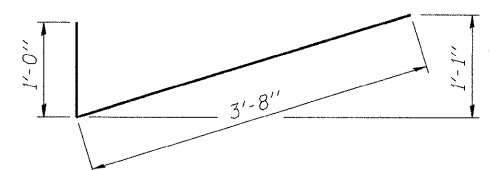


PLAN



BARS a<sub>2</sub>(E)

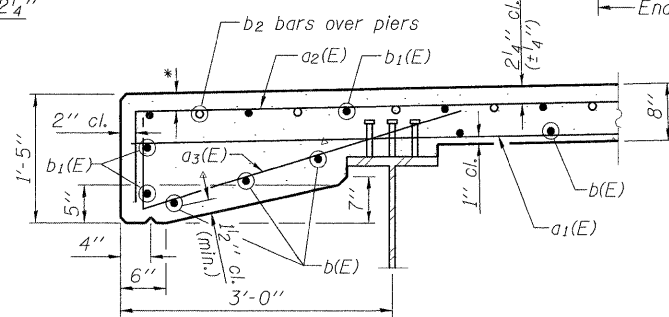


BARS a<sub>3</sub>(E)

**SUPERSTRUCTURE  
BILL OF MATERIAL**

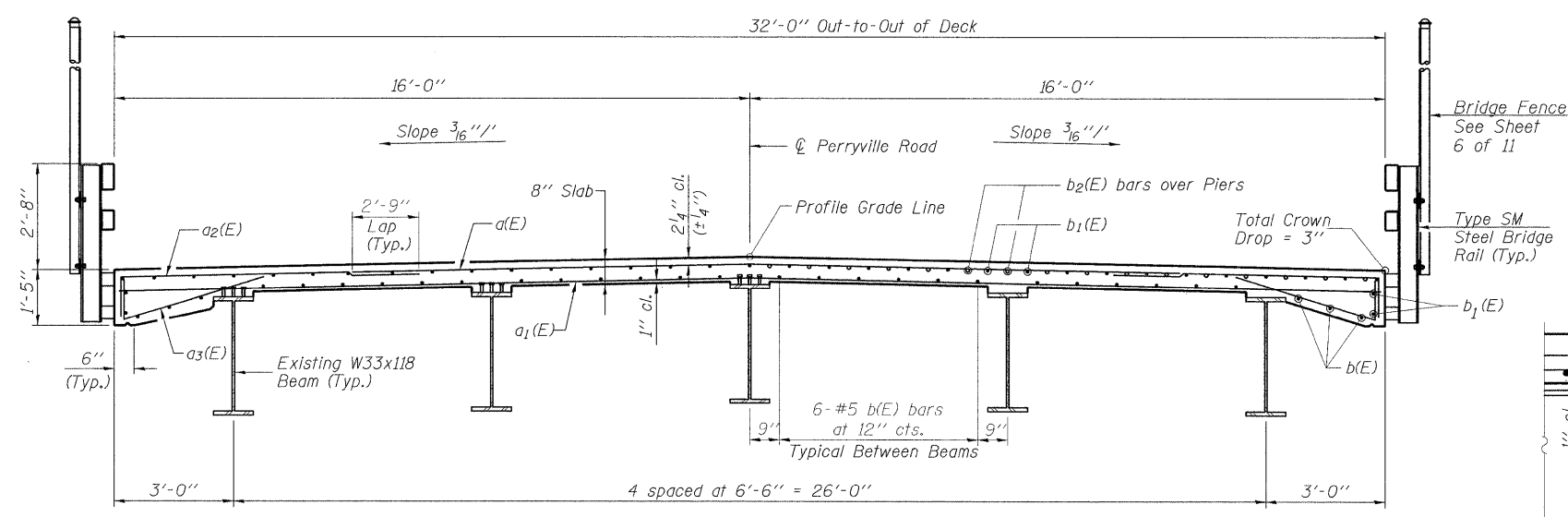
Bar	No.	Size	Length	Shape
a(E)	287	#5	21'-2"	—
a <sub>1</sub> (E)	187	#5	31'-8"	—
a <sub>2</sub> (E)	574	#7	9'-0"	—
a <sub>3</sub> (E)	288	#5	4'-8"	✓
b(E)	180	#5	27'-3"	—
b <sub>1</sub> (E)	185	#5	32'-4"	—
b <sub>2</sub> (E)	64	#6	33'-9"	—
Reinforcement Bars, Epoxy Coated			Pound	39,070
Concrete Superstructure			Cu. Yds.	141.4

Reinforcement bars designated (E) shall be epoxy coated.  
Bars indicated thus 1 x 3-#5 etc. indicates 1 line of bars with 3 lengths per line.



SECTION THRU EDGE OF SLAB

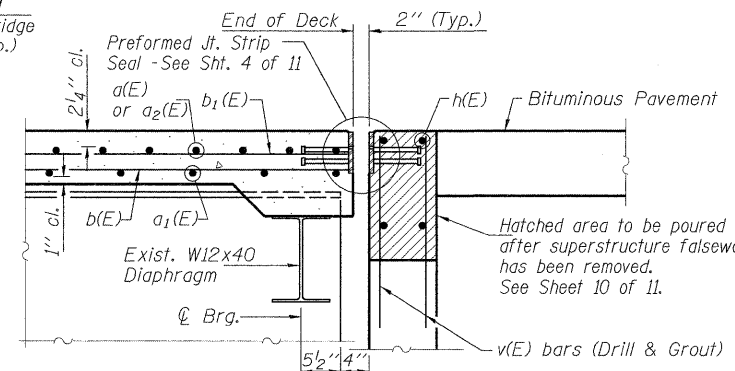
\* Reinforcement bars in the top deck may be placed with a 1/2 inch minimum clearance in the area of the rail post anchor devices. The studs of the anchor devices shall be placed below the top reinforcement bars and the outermost longitudinal reinforcement bar shall be placed directly above the studs of the rail post anchor device.



NEAR MIDSPAN

NEAR PIER

**PROPOSED BRIDGE CROSS SECTION**



SECTION THRU ABUTMENTS

**SUPERSTRUCTURE  
PERRYVILLE ROAD BRIDGE  
OVER SOUTH BRANCH KISHWAUKEE RIVER  
F.A.U. ROUTE 5148  
SECTION 08-00448-00-BR  
WINNEBAGO COUNTY  
STRUCTURE NUMBER 101-3064  
STATION 36+58.20**

SHEET NO. 3	F.A.U. ROUTE 5148	SECTION 08-00448-00-BR	COUNTY Winnebago	TOTAL SHEETS 14	SHEET NO. 6
11 SHEETS	CONTRACT NO. 85509			FED. ROAD DIST. NO. 2 ILLINOIS FED. AID PROJECT	



02/01/2010  
 SMK 01/28/10  
 JDM 01/28/10  
 SMK 01/28/10  
 LAYOUT  
 DRAWN  
 REVIEWED