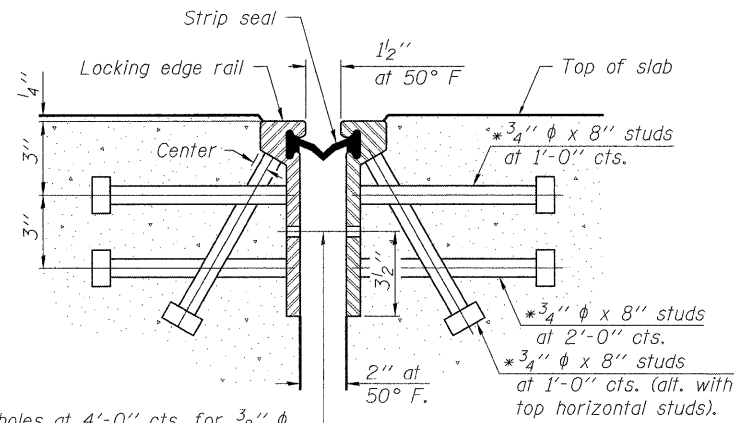
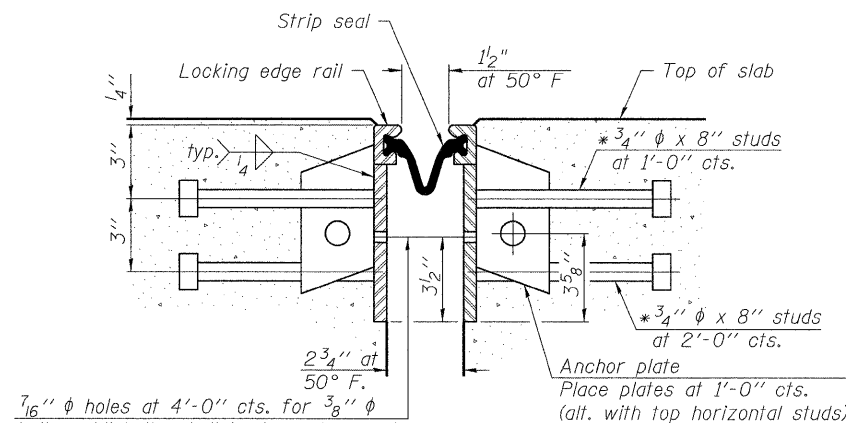


\* Granular or solid flux filled headed studs conforming to Article 1006.32 of the Std. Specs., automatically end welded.



7/16"  $\phi$  holes at 4'-0" cts. for 3/8"  $\phi$  bolts. All bolts shall be burned, sawed, or chipped off flush with the plates after forms are removed, typ.

**SECTION THRU  
ROLLED RAIL JOINT**

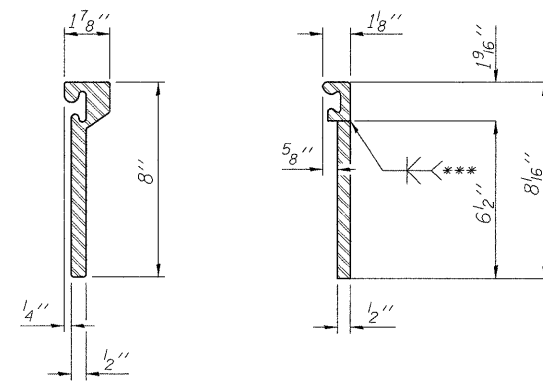


7/16"  $\phi$  holes at 4'-0" cts. for 3/8"  $\phi$  bolts. All bolts shall be burned, sawed, or chipped off flush with the plates after forms are removed, typ.

**SECTION THRU  
WELDED RAIL JOINT**

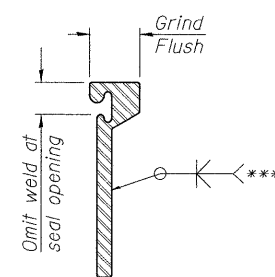
**Notes:**

The strip seal shall be made continuous and shall have a minimum thickness of 1/4". The configuration of the strip seal shall match the configuration of the Locking Edge Rails. Open or "webbed" strip seal gland configurations are not permitted. The gland shall be sized for a maximum rated movement of 4 inches. The height and thickness of the Locking Edge Rails shown are minimum dimensions. The actual configuration of the Locking Edge Rails and matching strip seal may vary from manufacturer to manufacturer. Flanged edge rails will not be allowed. Locking Edge Rails may be spliced at slope discontinuities and stage construction joints. The manufacturer's recommended installation methods shall be followed. The deck dimensions detailed on Sheet 3 of 11 are based on the use of rolled rail joints. If the Contractor elects to use welded rail joints, the deck dimensions and end rail post spacing shall be modified accordingly.



**ROLLED  
(EXTRUDED) RAIL**

**WELDED RAIL**

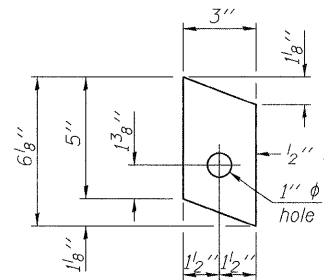


\*\*\* Back gouge not required if complete joint penetration is verified by mock-up.

**LOCKING EDGE  
RAIL SPLICE**

The inside of the locking edge rail groove shall be free of weld residue.

**LOCKING EDGE RAILS**



**ANCHOR PLATE  
(for welded rail)**

**BILL OF MATERIAL**

Item	Unit	Total
Preformed Joint Strip Seal	Foot	64

**PREFORMED JOINT STRIP SEAL**

PERRYVILLE ROAD BRIDGE  
OVER SOUTH BRANCH KISHWAUKEE RIVER  
F.A.U. ROUTE 5148  
SECTION 08-00448-00-BR  
WINNEBAGO COUNTY  
STRUCTURE NUMBER 101-3064  
STATION 36+58.20

DATE 01/28/10	PROJECT NO. 09L0003	DESIGNER HANSON	F.A.U. ROUTE 5148	SECTION 08-00448-00-BR	COUNTY Winnebago	TOTAL SHEETS 14	SHEET NO. 7
SHEET NO. 4			CONTRACT NO. 85509			FED. ROAD DIST. NO. 2 ILLINOIS FED. AID PROJECT	

01/27/2010  
 I:\09\Jobs\09L0003\Coord\Struct\Sheet\Sheet 5-007-Bridge Joint.dgn  
 LAYOUT: SNK 01/28/10  
 DRAWN: JDM 01/28/10  
 REVIEWED: SNK 01/28/10