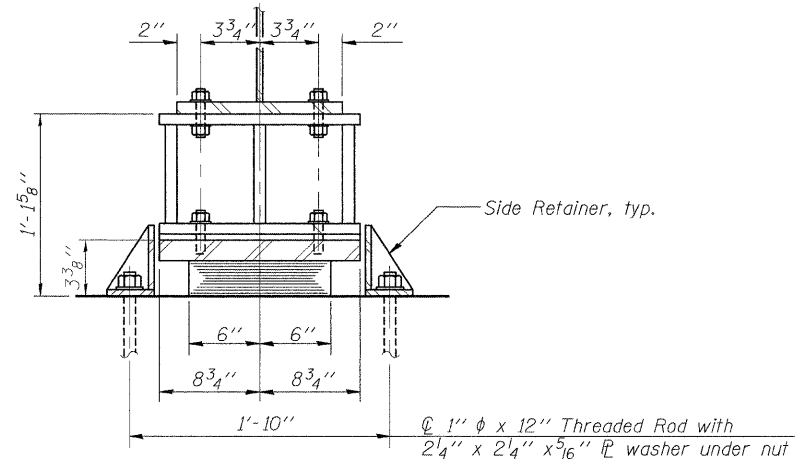
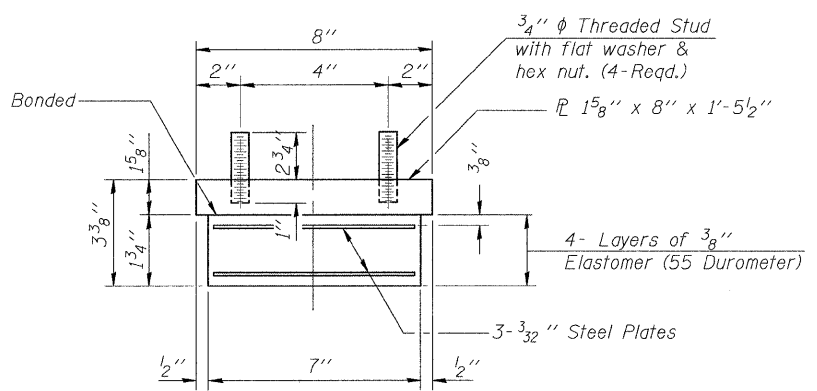


ELEVATION AT ABUT.



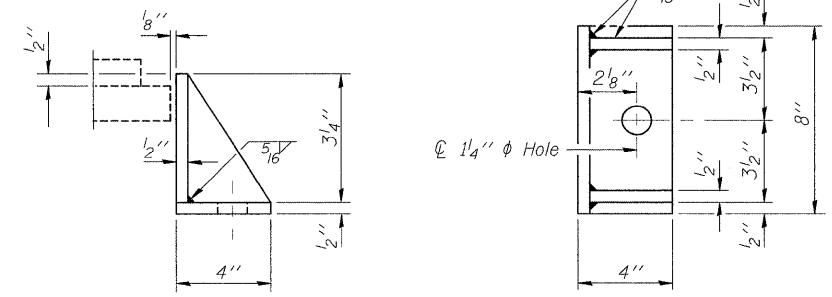
SECTION A-A

TYPE I ELASTOMERIC EXP. BRG.



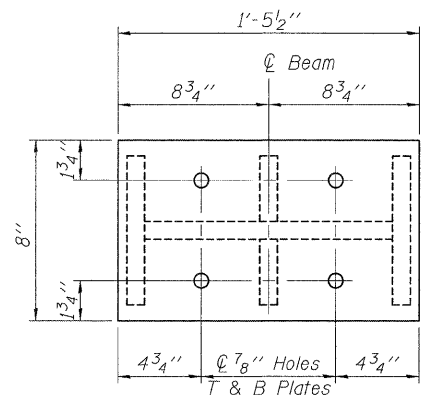
BEARING ASSEMBLY

Note:
Shim plates shall not be placed under Bearing Assembly.

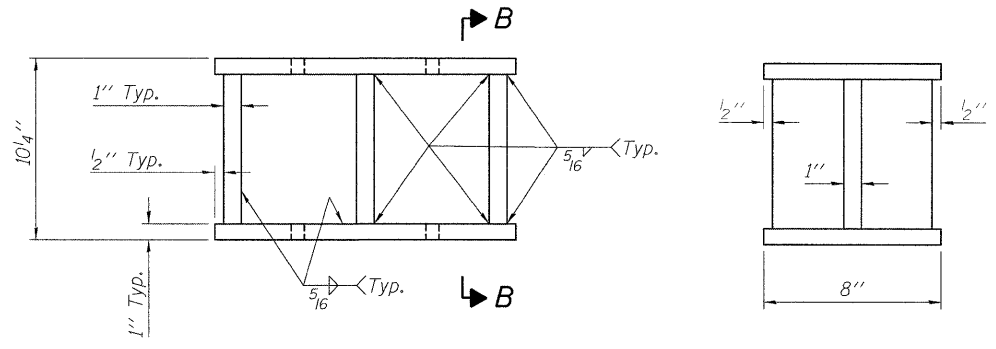


SIDE RETAINER

Equivalent rolled angle with stiffeners will be allowed in lieu of welded plates. Weight included with Structural Steel.



PLAN STEEL EXTENSION



ELEVATION STEEL EXTENSION

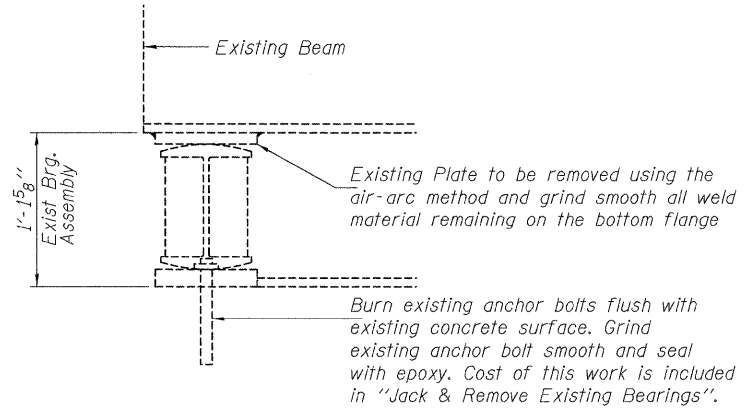
SECTION B-B

- Notes:
- Steel extensions will be paid for as Structural Steel.
 - The structural steel plates of the Bearing Assembly shall conform to the requirements of AASHTO M 270 Grade 50.
 - Two 1/8 inch adjusting shims shall be provided for each bearing in addition to all other plates or shims and placed as shown on bearing details.
 - All embedded and separate bearing plates, side retainers, steel extensions, anchor bolts, nuts, washers and pintles shall be galvanized according to AASHTO M111 or M232 (as applicable).
 - H.S. bolts in bearing assembly shall be galvanized according to AASHTO M298 Class 50.

BILL OF MATERIAL

Item	Unit	Total
Elastomeric Bearing Assembly Type I	Each	5

SOUTH ABUTMENT BEARING ASSEMBLY
 PERRYVILLE ROAD BRIDGE
 OVER SOUTH BRANCH KISHWAUKEE RIVER
 F.A.U. ROUTE 5148
 SECTION 08-00448-00-BR
 WINNEBAGO COUNTY
 STRUCTURE NUMBER 101-3064
 STATION 36+58.20



EXISTING ABUTMENT BEARING

01/27/2010
 I:\05\0509\09L0003\Coord\Struct\Sheet\01-Bearing T.j.l.dgn
 LAYOUT SMK 01/28/10
 DRAWN JDM 01/28/10
 REVIEWED SMK 01/28/10

Corporate License Number 184-001-084
 © Copyright Hanson Professional Services Inc. 2009
HANSON

09L0003	F.A.U. ROUTE 5148	SECTION 08-00448-00-BR	COUNTY Winnebago	TOTAL SHEETS 14	SHEET NO. 11
DATE 01/28/10	SHEET NO. 8		CONTRACT NO. 85509		
FED. ROAD DIST. NO. 2 ILLINOIS FED. AID PROJECT					