

CONTRACT NO. 87252

FED. ROAD DIST. NO. ILLINOIS FED. AID PROJECT

• RONNIE GRAY DRIVE (6502)
MAPLE STREET (6512)
• 00-00054-00-FP

TYSON ENGINEERING, INC.
CONSULTING CIVIL ENGINEERS
LAND SURVEYORS
DESIGN FIRM LICENSE #184-001136

367 SOUTH SCHUYLER AVENUE
KANKAKEE, ILLINOIS 60901
PHONE (815) 932-7406

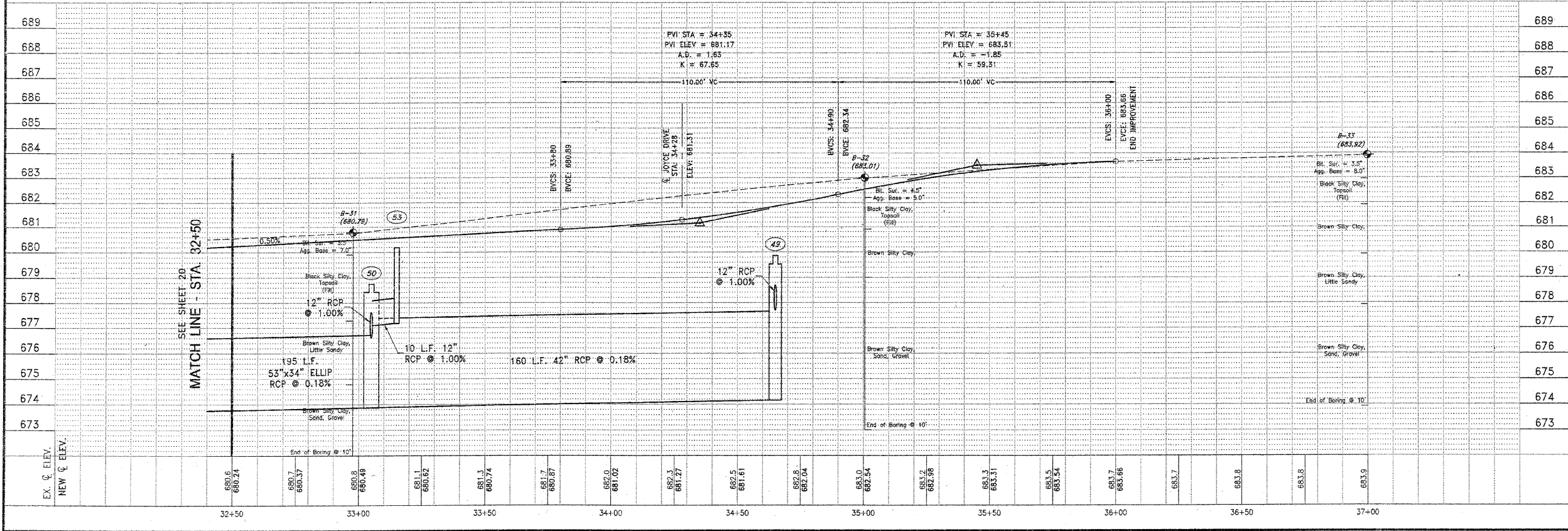
This document and the ideas and designs incorporated herein, as an instrument of professional service, is the property of Tyson Engineering Inc. and is not to be used in whole or in part, for any other project without written authorization of Tyson Engineering Inc.

Do not scale drawings. Use dimensions only. Contractor shall be responsible for verifying all dimensions.

Information herein and herein is confidential.

NO.	DATE	BY	DESCRIPTION
1	10/30/09	MRC	PER IDOT REVIEW

RONNIE GRAY DRIVE
PLAN AND PROFILE
STA. 32+50 TO STA. 37+00



VILLAGE OF MANTENO
MAPLE STREET AND RONNIE GRAY DRIVE IMPROVEMENTS
MANTENO, ILLINOIS

SECTION 00-00054-00-FP

DATE:	9/25/09	JOB NO.	E06030
SCALE:	HORIZ.: 1"=20' VERT.: 1"=2'	FILE NO.	
DRAWN BY:	MRG	SHEET	21
CHECKED BY:	SRM		

PLANNING AND DESIGN SERVICES, INC. 11/11/09 11:51 AM