

TYSON ENGINEERING, INC.
 CONSULTING CIVIL ENGINEERS
 LAND SURVEYORS
 DESIGN FIRM LICENSE #184-001136
 367 SOUTH SCHUYLER AVENUE
 KANKAKEE, ILLINOIS 60901
 PHONE (815) 932-7406

This document and the ideas and designs incorporated herein, as an instrument of professional service, is the property of Tyson Engineering Inc. and is not to be used in whole or in part, for any other project without written authorization of Tyson Engineering Inc.
 Do not scale drawings. Use dimensions only.
 Contractor shall be responsible for verifying all dimensions.
 Information herein and herein is confidential.

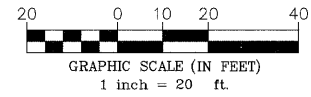
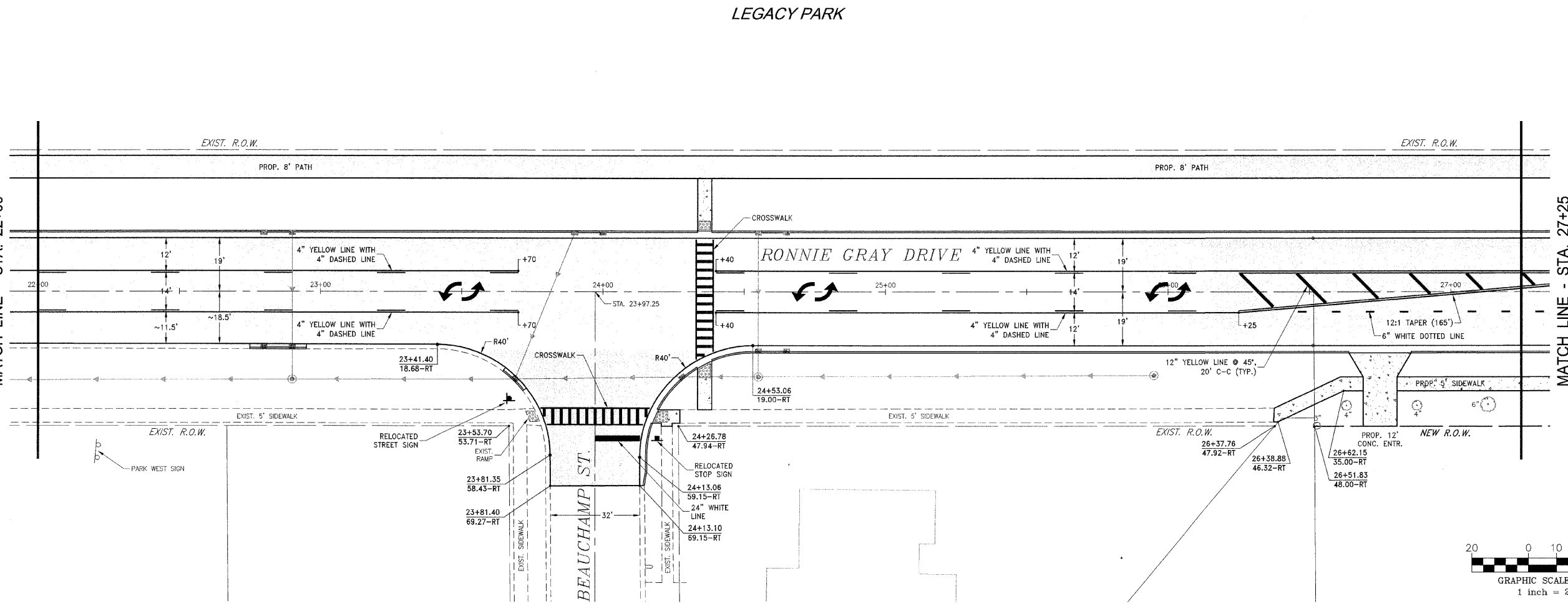
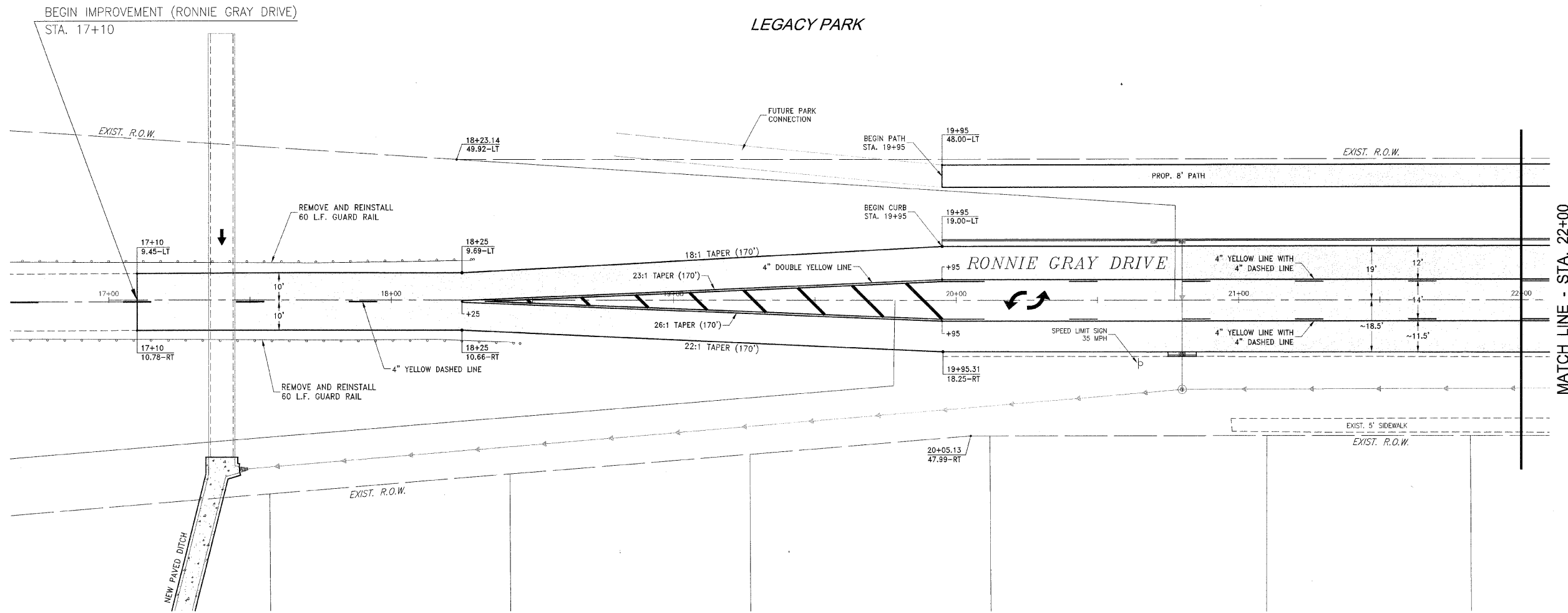
| REVISIONS | | | |
|-----------|----------|-----|-----------------|
| NO. | DATE | BY | DESCRIPTION |
| 1 | 10/30/09 | MRG | PER IDOT REVIEW |

RONNIE GRAY DRIVE
 STRIPING AND SIGNAGE
 PLAN

VILLAGE OF MANTENO
MAPLE STREET AND RONNIE GRAY DRIVE IMPROVEMENTS
 MANTENO, ILLINOIS

SECTION
 00-00054-00-FP

| | | | |
|-------------|-----------------------------|----------|--------|
| DATE: | 9/25/09 | JOB NO. | E06030 |
| SCALE: | HORZ.: 1"=20' VERT.: N/A | FILE NO. | |
| DRAWN BY: | MRG | SHEET | 29 |
| CHECKED BY: | SRM | | |



11/27/2009 11:52:00 AM
 C:\Users\jgarcia\Documents\Projects\Maple Street and Ronnie Gray Drive Improvements\Maple Street and Ronnie Gray Drive Improvements.dwg