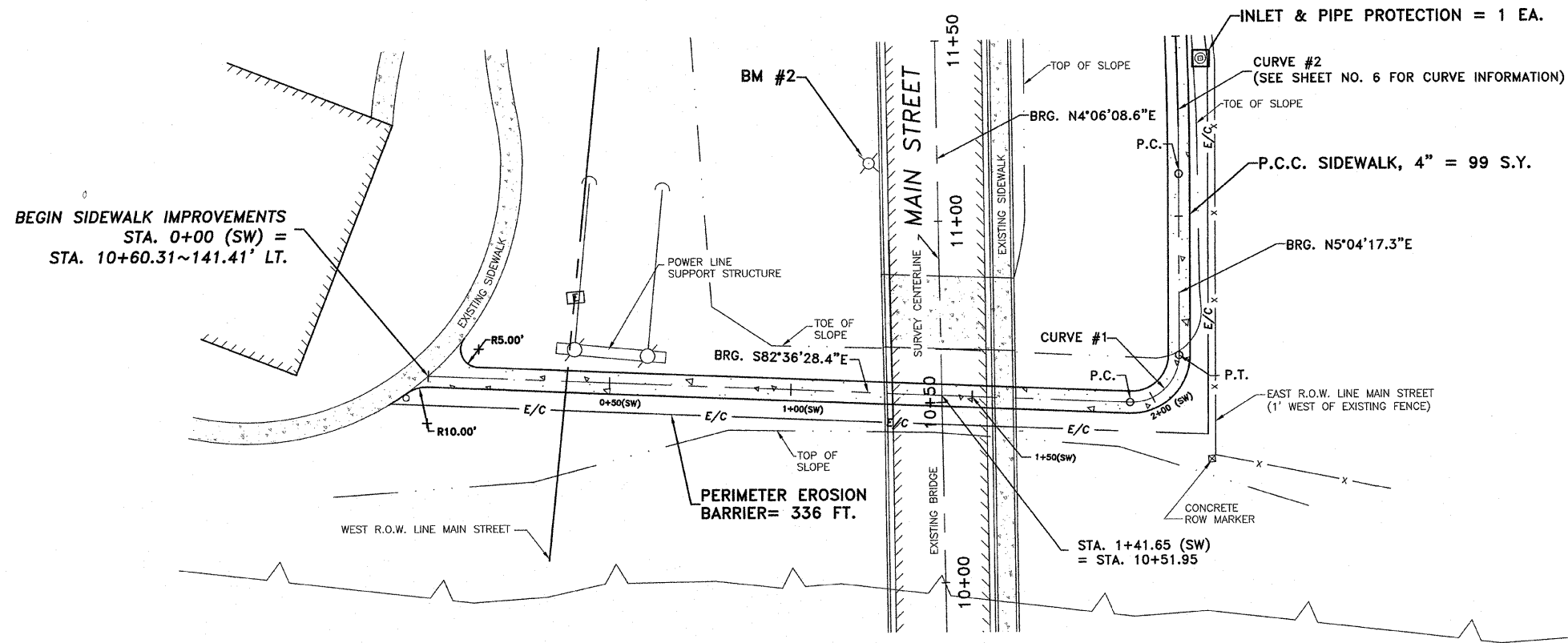


SEE SHEET NO. 6

F.A.S. ROUTE NO.	SECTION	ILLINOIS PROJECT	CONTRACT NO.	COUNTY	TOTAL SHEETS	SHEET NUMBER
268	06-00173-00-SW		87359	LASALLE	15	5



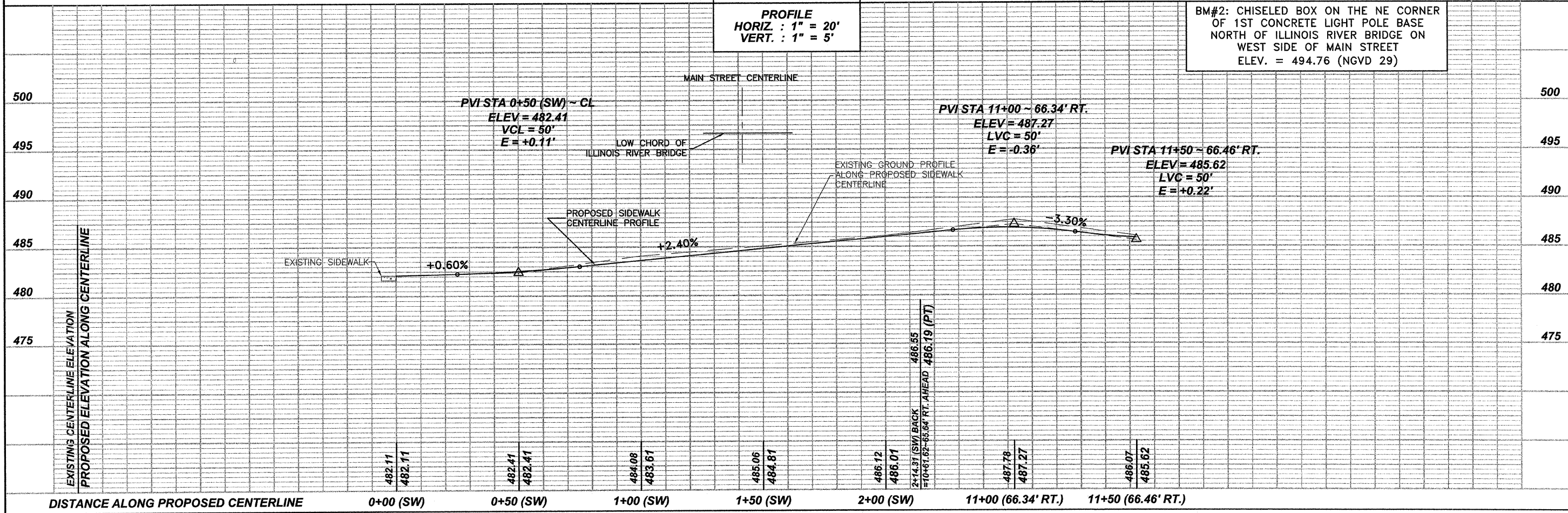
CURVE #1 DATA
 P.C. STA. 1+93.37 (SW)
 P.T. STA. 2+14.31 (SW)
 P.I. STA. 2+06.94 (SW)
 D = 92°19'14"
 R = 13.00'
 L = 20.95'
 T = 13.54'
 L.C. = 18.75'
 CH. BRG. = N51°13'54.45"E

ILLINOIS RIVER
 NWL = 467±
 BFE = 481.5

(SW) INDICATES STATIONING ALONG THE CENTERLINE OF THE PROPOSED SIDEWALK

SCALES
PLAN
 HORIZ. : 1" = 20'
PROFILE
 HORIZ. : 1" = 20'
 VERT. : 1" = 5'

BM#2: CHISELED BOX ON THE NE CORNER OF 1ST CONCRETE LIGHT POLE BASE NORTH OF ILLINOIS RIVER BRIDGE ON WEST SIDE OF MAIN STREET ELEV. = 494.76 (NGVD 29)



ES&S GEMINI/CIRCLE
 OTTAWA, IL
 TEL: 815-484-8935
 FAX: 815-484-8933

E.TSCHEID
DUTTLINGER
& ASSOCIATES INC.
 Professional Engineers & Land Surveyors

PROFESSIONAL DESIGN
 FIRM # 184-000711
 DATE PLOTTED:
 OCTOBER 21, 2009
 DRAWN BY:
 R.M.S.
 CHECKED BY:
 PROJECT NUMBER:
 2057.92
 DRAWING FILE:
 J:\205792_BASE2.DWG

SHEET NO.
5 OF 15

SIDEWALK IMPROVEMENTS ~ 0+00 (SW) TO 11+50