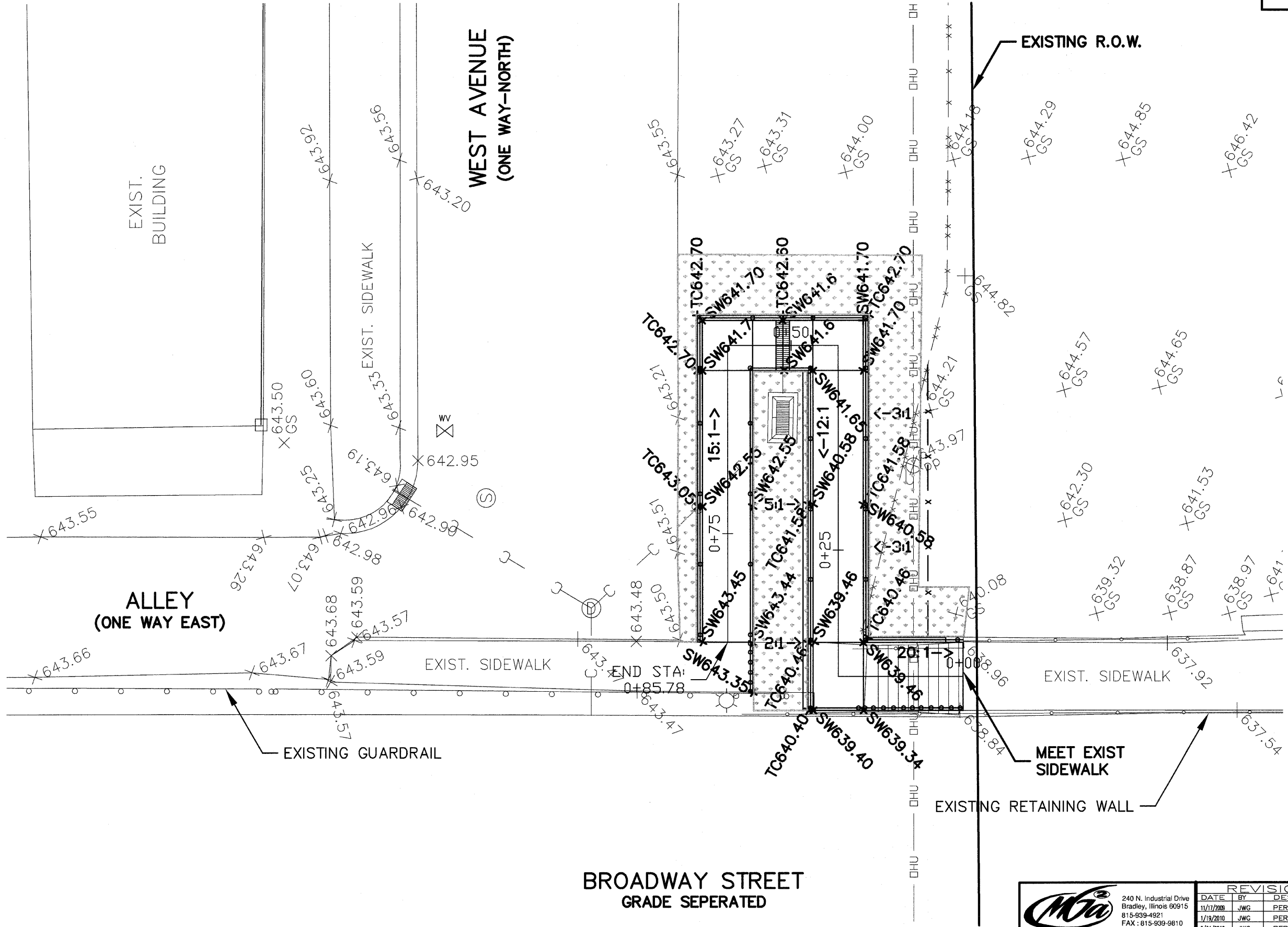
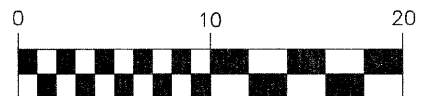


F.A.U. RTE.	SECTION	COUNTY	TOTAL SHEETS	SHEET NO.
N/A	08-00095-00-SP	KANKAKEE	06	05
CONTRACT NO.: 87371				



PROPOSED SODDING AREA
63 SQ YD



**BROADWAY STREET
GRADE SEPERATED**

M. GINGERICH, GERAUX ASSOCIATES
 240 N. Industrial Drive
 Bradley, Illinois 60915
 815-939-4921
 FAX : 815-939-9810

REVISIONS		
DATE	BY	DESCRIPTION
11/17/2008	JWG	PER IDOT REVIEW
1/19/2010	JWG	PER IDOT REVIEW
2/04/2010	JWG	PER IDOT REVIEW

ILLINOIS DEPARTMENT OF TRANSPORTATION
 VILLAGE OF BRADLEY
 SAFE ROUTES TO SCHOOLS
 PLAN VIEW - GRADING
 SCALE: 1"=10'
 DATE: 12/21/08
 DRAWN BY: JWG
 CHECKED BY: