

F.A.U. RTE.	SECTION	COUNTY	TOTAL SHEETS	SHEET NO.
N/A	08-00095-00-SP	KANKAKEE	06	01
CONTRACT NO.: 87371				

STATE OF ILLINOIS DEPARTMENT OF TRANSPORTATION DIVISION OF HIGHWAYS

PLANS FOR PROPOSED FEDERAL AID
SAFE ROUTES TO SCHOOLS
VILLAGE OF BRADLEY
BROADWAY STREET AT ICC RAILROAD
SIDEWALK INSTALLATION
SECTION NO.: 08-00095-00-SP
PROJECT NO.: SRTS-4008(004)
JOB NO.: C-40-027-08
KANKAKEE COUNTY

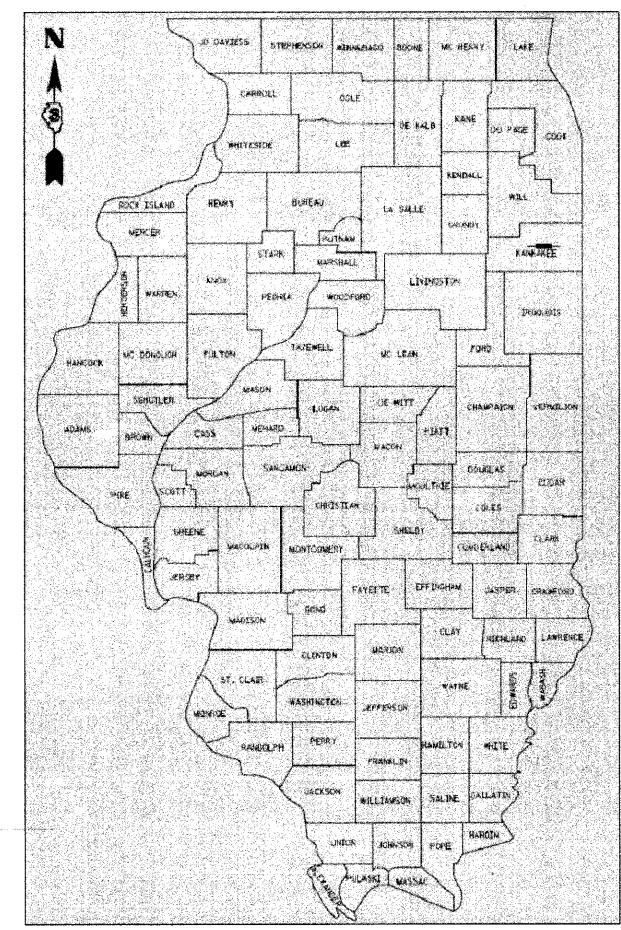
FAU RTE 6178

INDEX OF SHEETS

- 01 COVER SHEET
- 02 EXISTING TOPOGRAPHY
- 03 PLAN VIEW - REMOVALS
- 04 PLAN VIEW - PROPOSED GEOMETRY
- 05 PLAN VIEW - PROPOSED GRADING
- 06 PROPOSED CROSS-SECTIONS / DETAILS

HIGHWAY STANDARDS

- 000001-05 STANDARD SYMBOLS, ABBREVIATIONS AND PATTERNS
- 664001-02 CHAIN LINK FENCE
- 701301-03 LANE CLOSURE, 2L, 2W, SHORT TIME OPERATIONS
- 701501-05 URBAN LANE CLOSURE, 2L, 2W, UNDIVIDED
- 701901-01 TRAFFIC CONTROL DEVICES

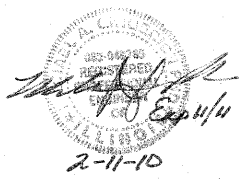
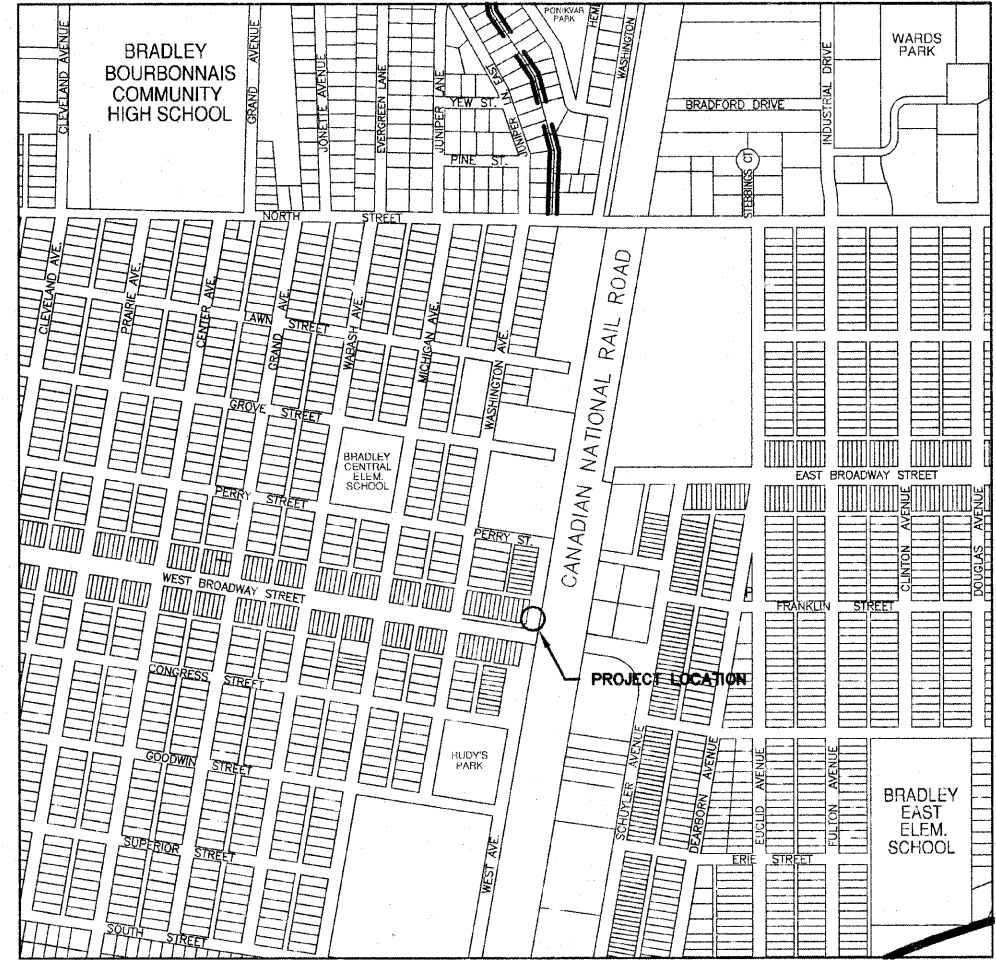
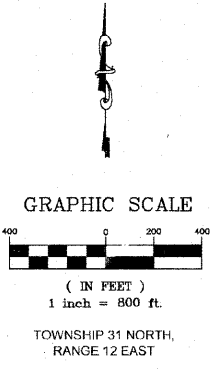
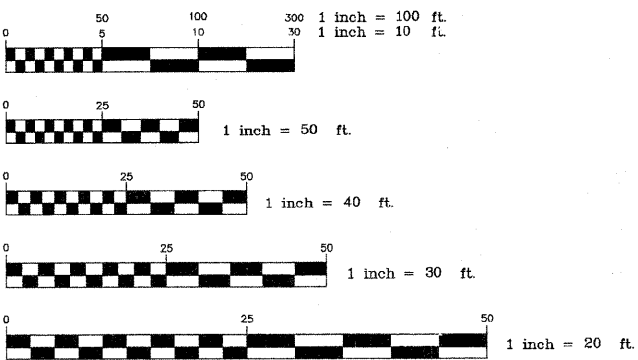


LOCATION OF SECTION INDICATED THIS: —

SUMMARY OF QUANTITIES			
CODE NO.	ITEM	UNIT	TOTAL QUANTITY SFTY-1B
20200100	EARTH EXCAVATION	CU YD	60
21101615	TOPSOIL FURNISH AND PLACE, 4"	SQ YD	63
25200100	SODDING	SQ YD	63
35101600	AGGREGATE BASE COURSE, TYPE B 4"	SQ YD	84
42400200	PORTLAND CEMENT CONCRETE SIDEWALK 5 INCH	SQ FT	450
44000600	SIDEWALK REMOVAL	SQ FT	66
50900605	HANDRAIL REMOVAL	FOOT	34
50901760	PIPE HANDRAIL	FOOT	163
50901765	PIPE HANDRAIL, SPECIAL	FOOT	15
550B0040	STORM SEWERS, CLASS B, TYPE 1 10"	FOOT	2
60600505	CONCRETE CURB (SPECIAL)	FOOT	123
66410410	CHAIN LINK FENCE TO BE RELOCATED	FOOT	27
67100100	MOBILIZATION	L SUM	1
70101700	TRAFFIC CONTROL AND PROTECTION	L SUM	1
X0322123	STAIR REMOVAL	L SUM	1
XX003308	TRENCH DRAIN	FOOT	5

* SEE SPECIAL PROVISIONS
Δ SPECIALTY ITEM

J.U.L.I.E.
JOINT UTILITY LOCATION INFORMATION FOR EXCAVATION
1-800-892-0123



STATE OF ILLINOIS DEPARTMENT OF TRANSPORTATION DIVISION OF HIGHWAYS		
APPROVED	<u>2/11/10</u>	(DATE)
	<u>Bruce W. Olson</u>	(SIGNATURE)
	VILLAGE OF BRADLEY	
PASSED	<u>2/19/10</u>	(DATE)
	<u>Jungin</u>	(SIGNATURE)
	DISTRICT #3 ENGINEER OF LOCAL ROADS & STREETS	
RELEASING FOR BID BASED ON LIMITED REVIEW	<u>2/19/10</u>	(DATE)
	<u>George Ryan</u>	(SIGNATURE)
	DEPUTY DIRECTOR OF HIGHWAYS, REGION #2 ENGINEER	

PRINTED BY THE AUTHORITY
OF THE STATE OF ILLINOIS

FULL SIZE 11X17 PLANS HAVE BEEN PREPARED USING STANDARD ENGINEERING SCALES. REDUCED SIZED PLANS WILL NOT CONFORM TO STANDARD SCALES. IN MAKING MEASUREMENTS ON REDUCED PLANS, THE ABOVE SCALES MAY BE USED.

ROAD NAME	FUNCTIONAL CLASSIFICATION	A.D.T.	DESIGN SPEED
WEST BROADWAY STREET	URBAN COLLECTOR	10100	25
WEST AVENUE	LOCAL ROAD	<20	10

CONTRACT NO.: 87371



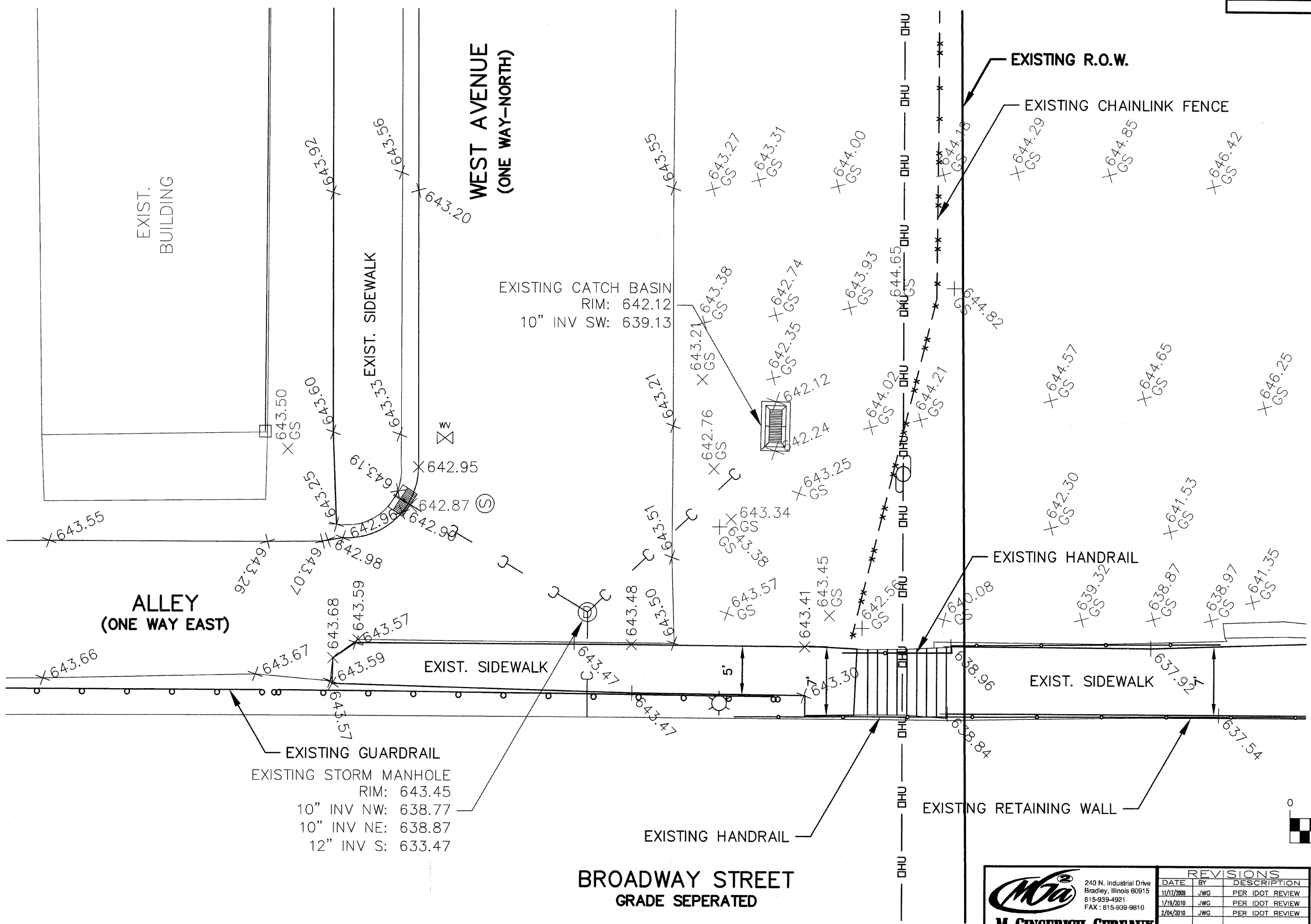
REVISIONS		
DATE	BY	DESCRIPTION
11/17/2009	JWG	PER IDOT REVIEW
1/19/2010	JWG	PER IDOT REVIEW
2/04/2010	JWG	PER IDOT REVIEW

ILLINOIS DEPARTMENT OF TRANSPORTATION
VILLAGE OF BRADLEY
SAFE ROUTES TO SCHOOLS

COVER SHEET

SCALE: DATE: 12/21/08 DRAWN BY: JWG CHECKED BY:

F.A.U. RTE.	SECTION	COUNTY	TOTAL SHEETS	SHEET NO.
N/A	08-00095-00-SP	KANKAKEE	06	02
CONTRACT NO.: 87371				



**ALLEY
(ONE WAY EAST)**

**WEST AVENUE
(ONE WAY-NORTH)**

**BROADWAY STREET
GRADE SEPERATED**

EXISTING GUARDRAIL
EXISTING STORM MANHOLE
RIM: 643.45
10" INV NW: 638.77
10" INV NE: 638.87
12" INV S: 633.47

EXISTING CATCH BASIN
RIM: 642.12
10" INV SW: 639.13

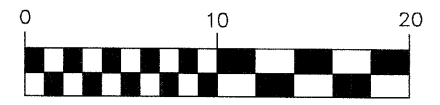
EXISTING HANDRAIL

EXISTING RETAINING WALL

EXISTING R.O.W.

EXISTING CHAINLINK FENCE

EXIST. SIDEWALK

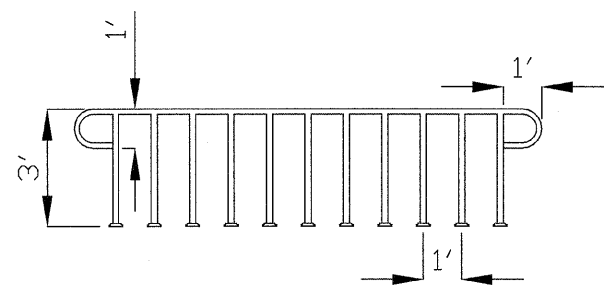


M. GINGERICH, GEREUX ASSOCIATES
240 N. Industrial Drive
Bradley, Illinois 60915
815-939-4921
FAX: 815-939-9810

REVISIONS		
DATE	BY	DESCRIPTION
11/17/2008	JWG	PER IDOT REVIEW
1/19/2010	JWG	PER IDOT REVIEW
2/04/2010	JWG	PER IDOT REVIEW

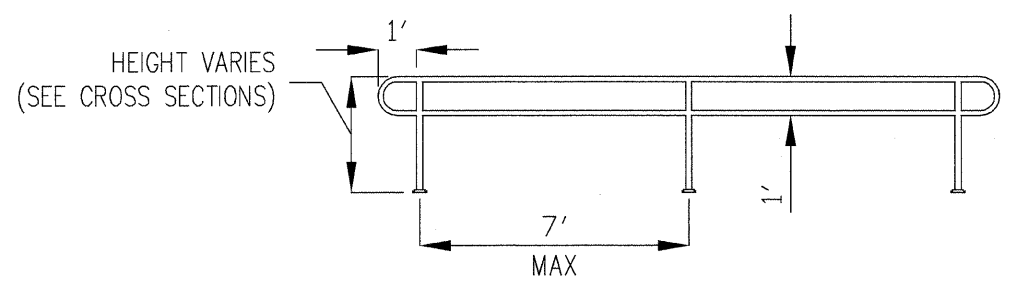
ILLINOIS DEPARTMENT OF TRANSPORTATION
VILLAGE OF BRADLEY
SAFE ROUTES TO SCHOOLS
PLAN VIEW - EXISTING TOPOGRAPHY
SCALE: 1"=5'
DATE: 12/21/08
DRAWN BY: JWG
CHECKED BY:

F.A.U. RTE.	SECTION	COUNTY	TOTAL SHEETS	SHEET NO.
N/A	08-00095-00-SP	KANKAKEE	06	06
CONTRACT NO.: 87371				



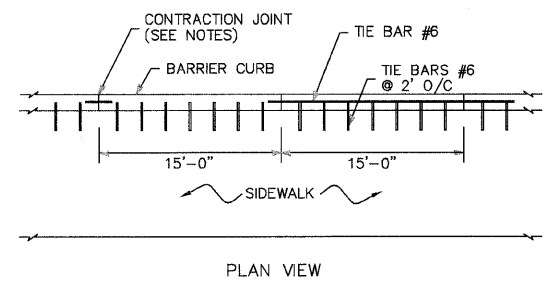
PIPE HANDRAIL (SPECIAL)
N.T.S.

NOTE:
PIPE HANDRAIL SHALL HAVE GALVANIZED FINISH



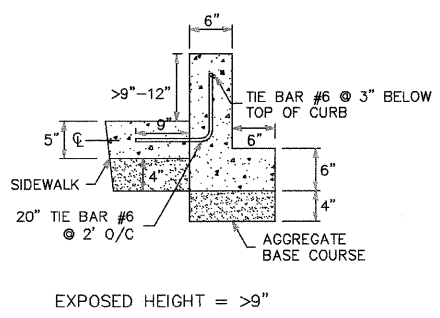
PIPE HANDRAIL
N.T.S.

NOTE:
PIPE HANDRAIL SHALL HAVE GALVANIZED FINISH

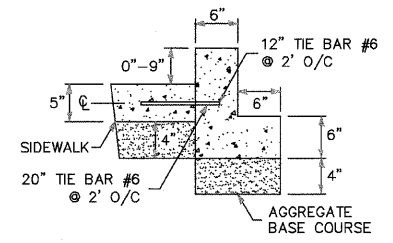


PLAN VIEW

- CONTRACTION JOINT CONSTRUCTION NOTES:
- CONSTRUCTION OPTIONS:
 - FORM WITH 3/8" THICK STEEL TEMPLATE 2" DEEP, AND SEAL.
 - SAW AT 4 TO 24 HOURS, AND SEAL.
 - TIE BARS:
 - CONTINUOUS FOR CURB HEIGHT > 9"
 - 18" FOR CURB HEIGHT 0"-9"

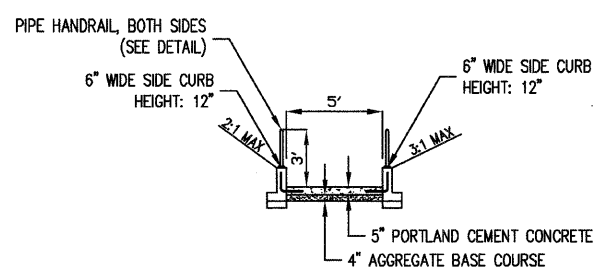


EXPOSED HEIGHT = >9"

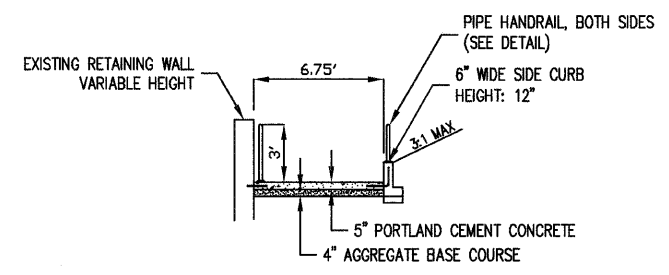


EXPOSED HEIGHT = 0"-9"

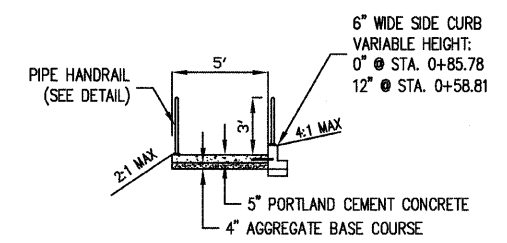
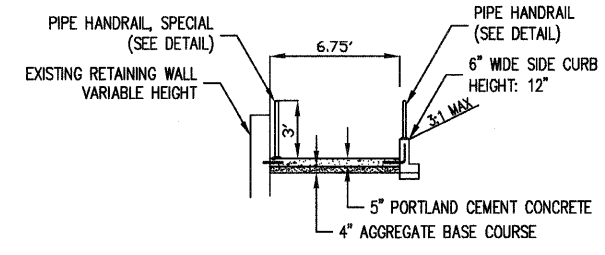
CONCRETE CURB (SPECIAL)
DETAIL



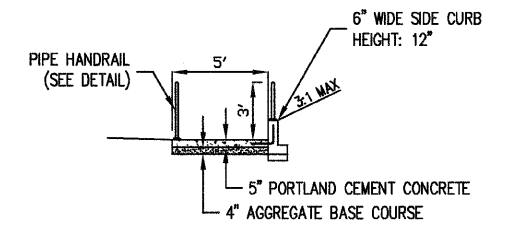
TYPICAL CROSS SECTION
STA 0+09.9 TO STA 0+12.43



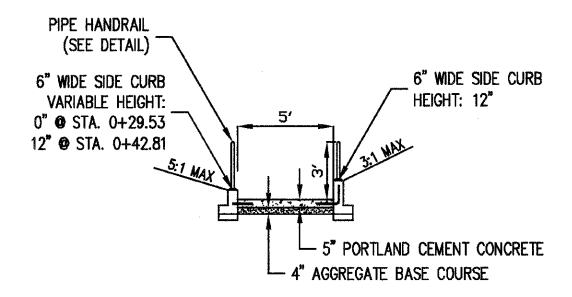
TYPICAL CROSS SECTION
STA 0+00 TO STA 0+09.9



TYPICAL CROSS SECTION
STA 0+58.81 TO STA 0+85.78



TYPICAL CROSS SECTION
STA 0+42.81 TO STA 0+58.81



TYPICAL CROSS SECTION
STA 0+29.53 TO STA 42.81

M. GINGERICH, GERAUX ASSOCIATES

240 N. Industrial Drive
Bradley, Illinois 60915
815-939-4921
FAX: 815-939-9810

REVISIONS		
DATE	BY	DESCRIPTION
11/17/2009	JWG	PER IDOT REVIEW
1/19/2010	JWG	PER IDOT REVIEW
2/04/2010	JWG	PER IDOT REVIEW

ILLINOIS DEPARTMENT OF TRANSPORTATION
VILLAGE OF BRADLEY
SAFE ROUTES TO SCHOOLS

TYPICAL CROSS-SECTIONS

SCALE: 1"=10'
DATE: 12/21/08

DRAWN BY: JWG
CHECKED BY: