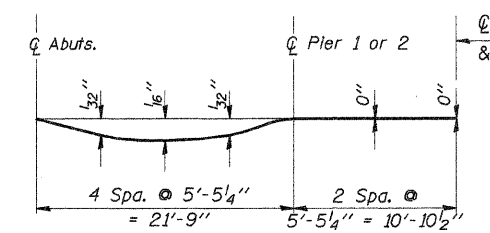


HALF PLAN

*Edge beam bars are enclosed in s bar stirrups.

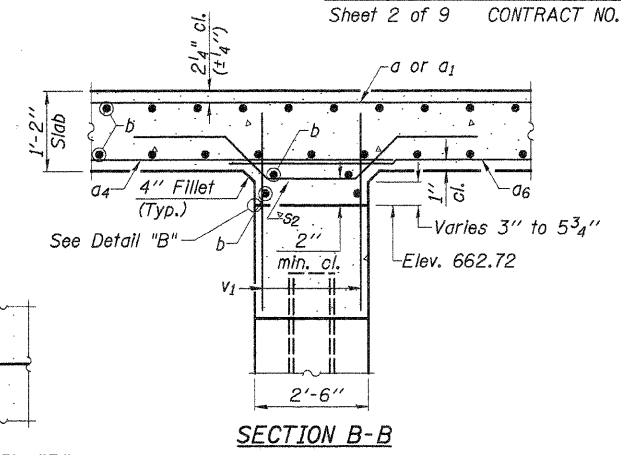
REINFORCEMENT TOP OF SLAB

REINFORCEMENT BOT. OF SLAB



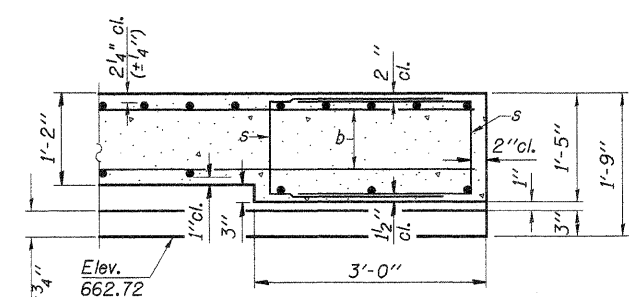
DEAD LOAD DEFLECTION DIAGRAM

The Contractor shall make allowance for the deflection of forms, shrinkage and settlement of falsework in addition to the allowance of dead load deflection.

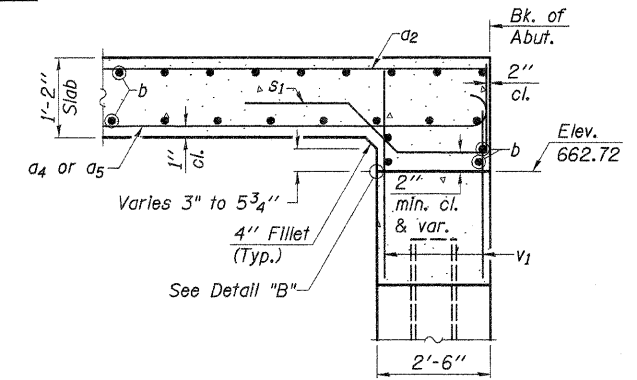


SECTION B-B

DETAIL "B"



DETAIL A



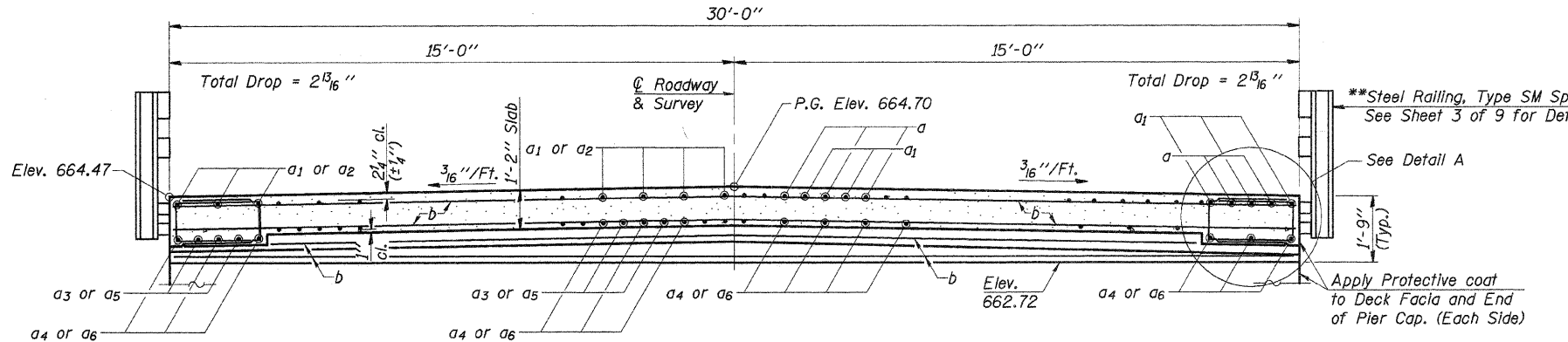
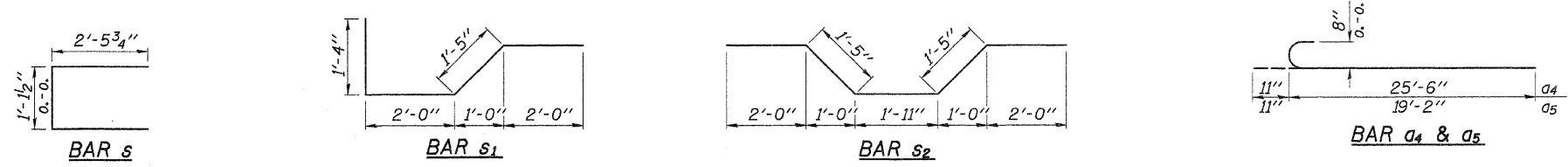
SECTION A-A

SUPERSTRUCTURE BILL OF MATERIAL

BAR	NO.	SIZE	LENGTH	SHAPE
a	52	#9	13'-0"	—
a1	54	#9	26'-0"	—
a2	54	#5	12'-0"	—
a3	26	#8	14'-1"	—
a4	54	#8	26'-5"	—
a5	52	#8	20'-1"	—
a6	27	#8	27'-6"	—
b	131	#5	29'-8"	—
s	272	#4	6'-1"	□
s1	60	#6	6'-9"	┌
s2	60	#6	8'-9"	└

Material	Unit	Quantity
Reinforcement Bars, Epoxy Coated	Pound	23,860
Concrete Superstructure	Cu. Yd.	95.4
Protective Coat	Sq. Yd.	247
Bridge Deck Grooving	Sq. Yd.	211

Note: All Reinforcement Bars Shall Be Epoxy Coated.



HALF SECTION NEAR MIDSPANS & ABUTS.

HALF SECTION NEAR PIERS

DECK CROSS SECTION (Looking North)

**Note: Studs for the rail post anchor devices shall be placed below the top reinforcement bars and the outermost longitudinal reinforcement bar shall be placed directly above the studs of the rail post anchor devices.

DESIGNED	A.L.S.
CHECKED	A.R.K.
DRAWN	S.A.P.
CHECKED	A.R.K. & A.L.S.

SUPERSTRUCTURE
COUNTY HIGHWAY 8
SECTION 06-00098-01-BR
IROQUOIS COUNTY
STATION 5+46.50

4440 ASH GROVE
 SPRINGFIELD, IL 62711
 (217) 793-8800
 www.fehr-graham.com

FEHR-GRAHAM & ASSOCIATES, LLC
 ENGINEERING AND SCIENCE CONSULTANTS

JOB NO.: 09-202
 FILE: RC-SLAB.D
 DATE: 10/23/09