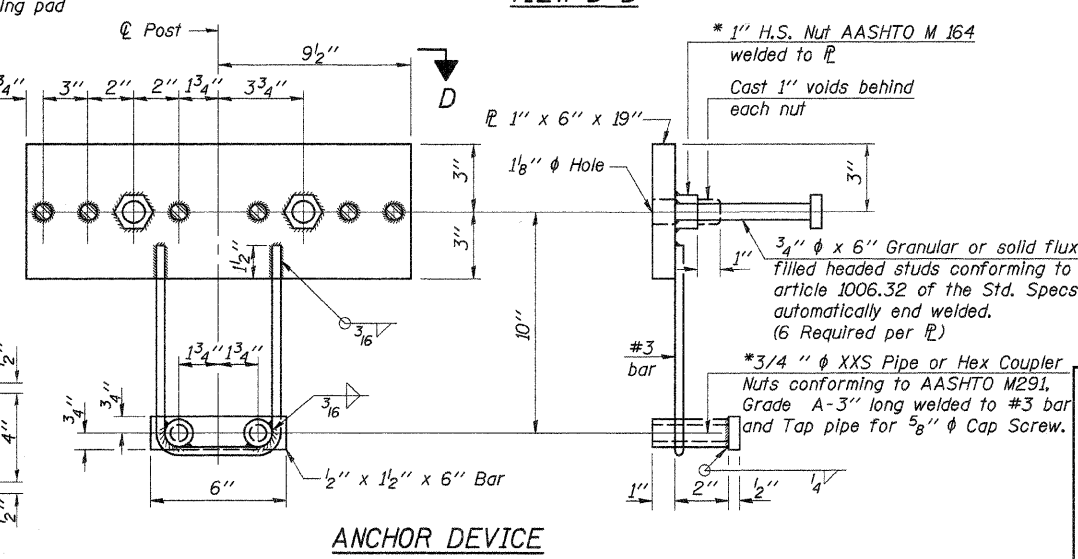
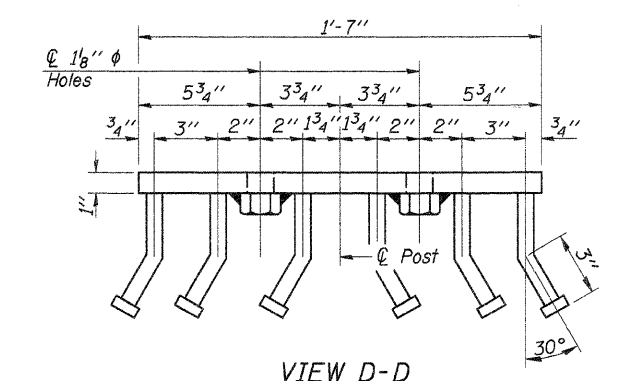
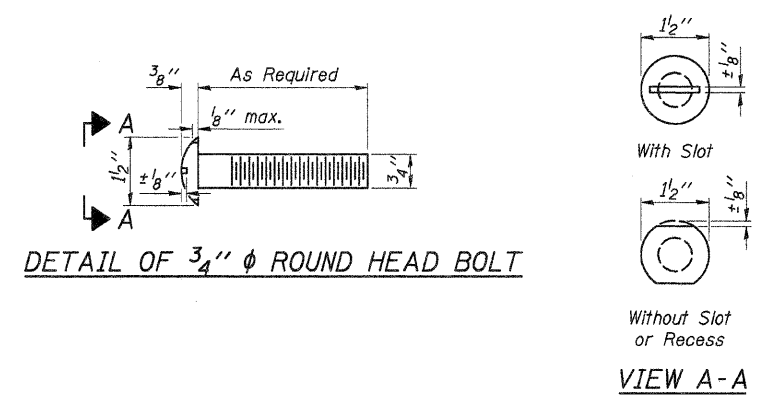
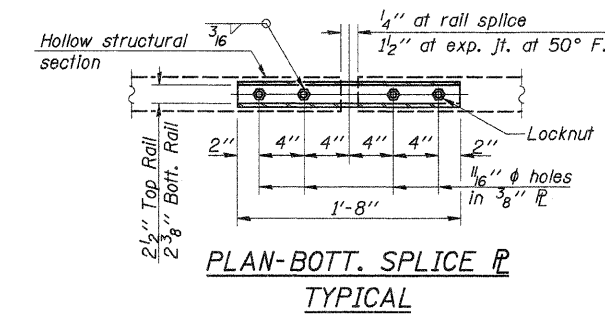
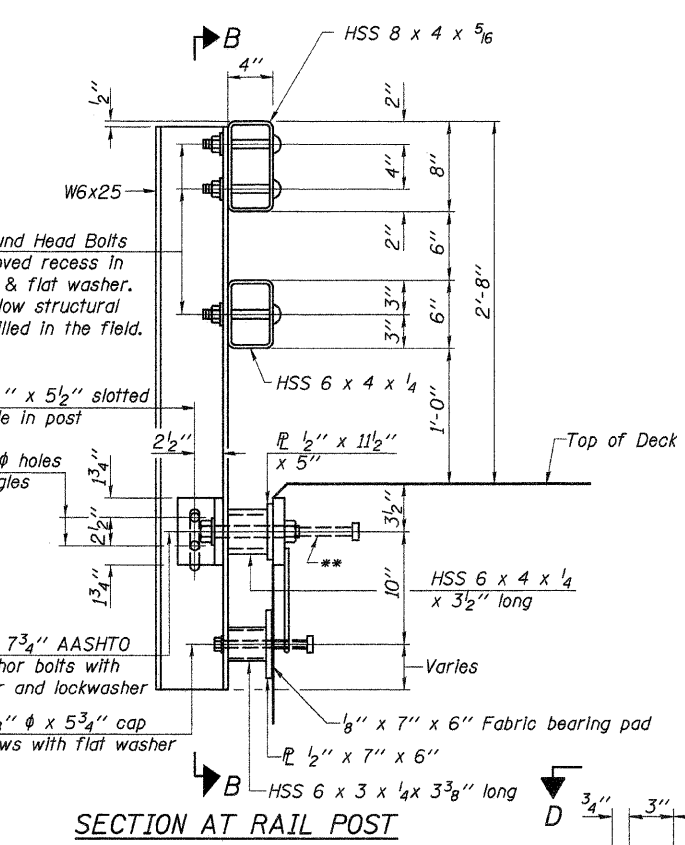
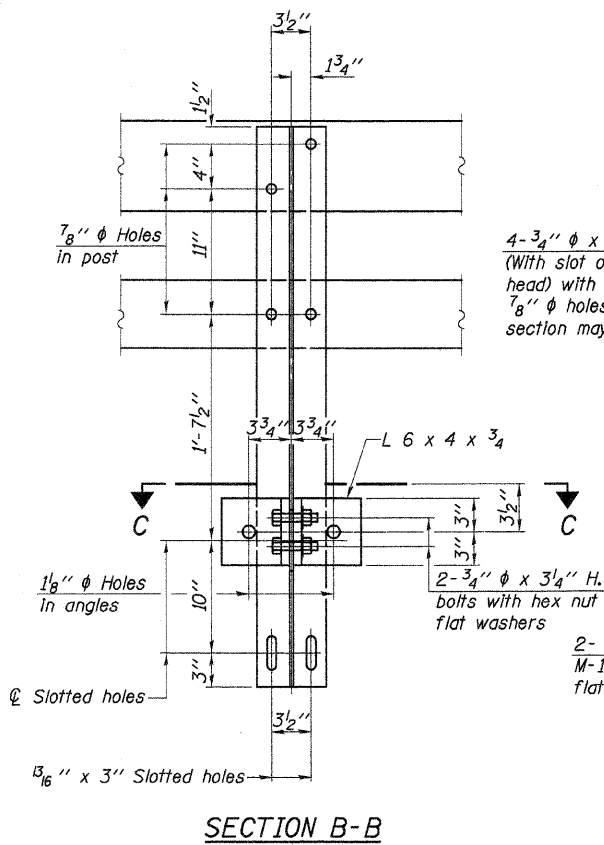
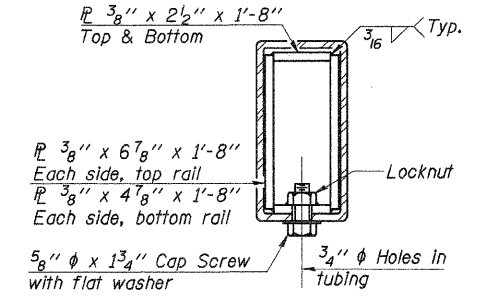
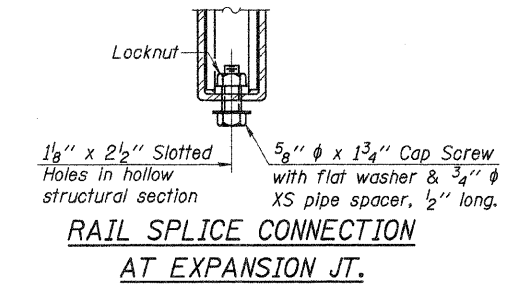


Curled End Section
(Typ. @ SW. & NE. Corners)



Notes:
 All field drilled holes shall be coated with an approved zinc rich paint before erection.
 For multi-span bridges, sufficient 1/4" x 6" x 1'-2" galvanized steel shims shall be provided to align rail between adjacent spans. Cost included with Steel Railing, Type SM.
 All steel rail members shall be galvanized according to Article 509.05 of the Standard Specifications.
 **The studs of the anchor devices shall be placed below the top reinforcement bars and the outermost longitudinal reinforcement bar shall be placed directly above the studs of the rail post anchor device.

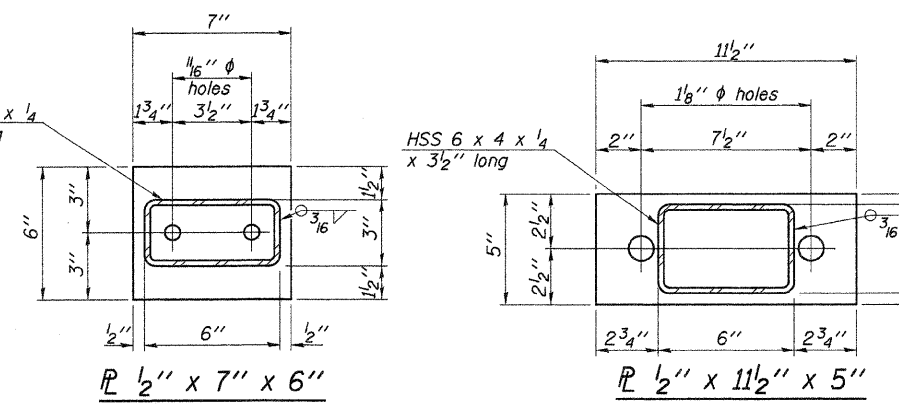
BILL OF MATERIAL

| Item | Unit | Quantity |
|----------------------------------|------|----------|
| Steel Railing, Type SM (Special) | Foot | 136 |

See Sheet 4 of 9 for End of Rail Details.

STEEL RAILING, TYPE SM (SPECIAL)
 COUNTY HIGHWAY 8
 SECTION 06-00098-01-BR
 IROQUOIS COUNTY
 STATION 5+46.50

| | |
|----------|-----------------|
| DESIGNED | A.L.S. |
| CHECKED | A.R.K. |
| DRAWN | S.A.P. |
| CHECKED | A.R.K. & A.L.S. |



*Threaded areas shall be plugged or blocked off during casting of beam. Galvanized after fabrication.