

ROUTE NO.	SECTION	COUNTY	TOTAL SHEETS	SHEET NO.
	08-00024-00-SW	TAZEWELL	27	1
FEDERAL ROAD DISTNO.	ILLINOIS	CONTRACT NO. 89505		

STATE OF ILLINOIS  
DEPARTMENT OF TRANSPORTATION  
DIVISION OF HIGHWAYS

PLANS FOR PROPOSED  
SAFE ROUTE TO SCHOOLS  
VILLAGE OF NORTH PEKIN

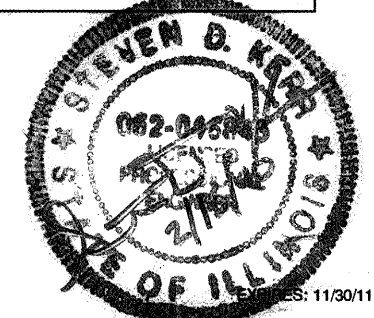
ELM STREET, LEE STREET, McARTHUR DRIVE AND ROGERS STREET

COUNTY OF TAZEWELL, ILLINOIS  
FEDERAL PROJECT NO. SRTS-4008(002)  
SECTION NO. 08-00024-00-SW  
JOB NO. C-40-030-08



LOCATION OF PROPOSED IMPROVEMENT

AGENCY RESPONSIBLE FOR LETTING
APPROVED <u>2/16</u> 20 <u>10</u> <i>Stephen Slaw</i> LOCAL AGENCY REPRESENTATIVE
PASSED <u>2/19</u> 20 <u>10</u> <i>[Signature]</i> DISTRICT 4 ENGINEER OF LOCAL ROADS & STREETS RELEASING FOR BID & BASED ON LIMITED REVIEW <u>2/19</u> 20 <u>10</u>
DEPUTY DIRECTOR OF HIGHWAYS REGION THREE ENGINEER STATE OF ILLINOIS DEPARTMENT OF TRANSPORTATION

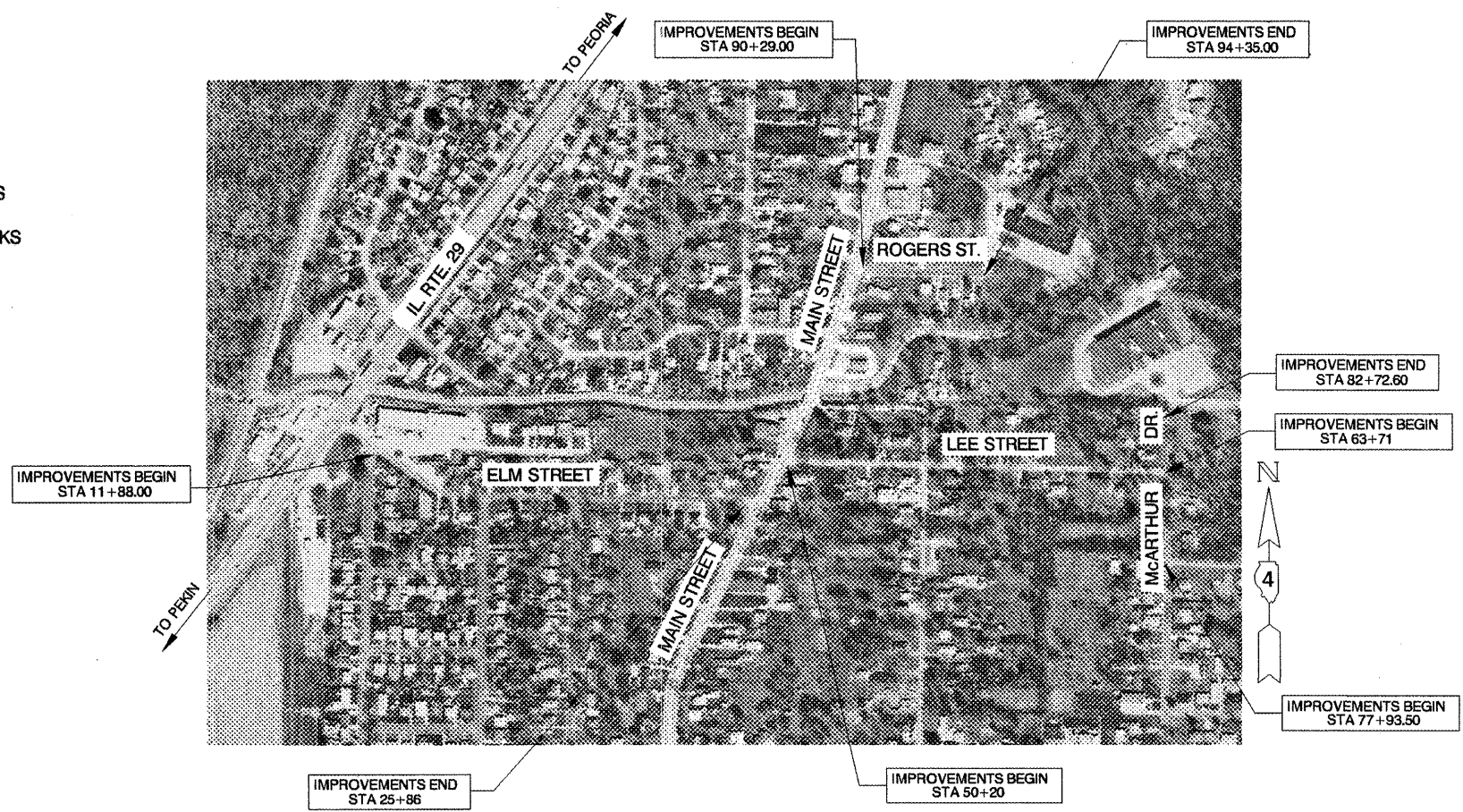


INDEX OF SHEETS

- 1 COVER SHEET
- 2 GENERAL NOTES AND TYPICAL SECTIONS
- 3 SUMMARY OF QUANTITIES
- 4-6 PLAN AND PROFILES
- 7-19 CROSS SECTIONS
- 20-27 D4 DETAILS

HIGHWAY STANDARDS

- 000001-05 STANDARD SYMBOLS, ABBREVIATION AND PATTERNS
- 424001-05 CURB RAMPS FOR SIDEWALKS
- 606001-04 CONCRETE CURB TYPE B AND COMBINATION CONCRETE CURB AND GUTTER
- 701501-05 URBAN LANE CLOSURE, 2L, 2W, UNDIVIDED
- 701801-04 LANE CLOSURE MULTILANE 1W OR 2W CROSSWALK OR SIDEWALK CLOSURE
- 701901-01 TRAFFIC CONTROL DEVICES
- 720001-01 SIGN PANEL MOUNTING DETAILS
- 720006-02 SIGN PANEL ERECTION DETAILS
- 720011-01 METAL POST FOR SIGNS, MARKERS AND DELINEATORS
- 728001-01 TELESCOPING STEEL SIGN SUPPORT
- 729001-01 APPLICATIONS OF TYPES A & B METAL POSTS
- 423101-D4 URBAN ENTRANCES, ACCESSIBLE TO THE DISABLED, FOR CURBLINE SIDEWALKS
- 423106-D4 URBAN ENTRANCES, ACCESSIBLE TO THE DISABLED, FOR SEPARATED SIDEWALKS
- 424001-D4 SIDEWALK RAMPS, ACCESSIBLE TO THE DISABLED
- 780001-D4 TYPICAL PAVEMENT MARKINGS



VILLAGE OF NORTH PEKIN, ILLINOIS  
NET LENGTH OF IMPROVEMENT 3,621 FEET OF 0.686 MILES

CALL JULIE 1-800-892-0123 48 HOURS BEFORE YOU DIG  
EXCLUDING SATURDAYS, SUNDAYS, AND HOLIDAYS

CONTRACT NO. 89505 CATALOG #033867-00

**M** MOHR & KERR ENGINEERING & LAND SURVEYING, P.C.  
7336 N. University Ave. Office: (309) 692-8500  
Peoria, Illinois 61614 Fax: (309) 692-8501  
www.mohrandkerr.com Professional Design Firm #184.005091

09-087