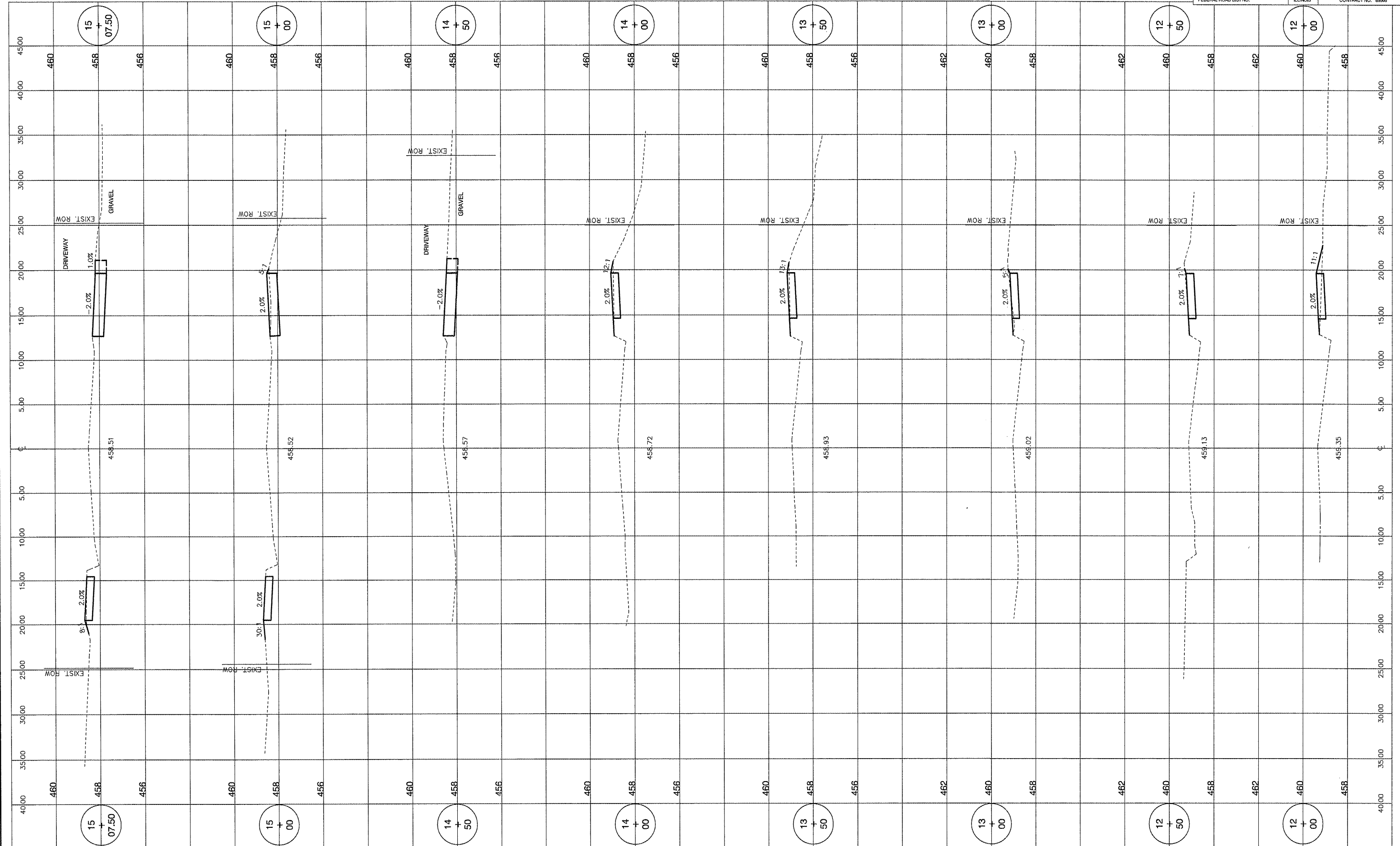


ROUTE NO.	SECTION	COUNTY	TOTAL SHEETS	SHEET NO.
08-00024-00-SW	TAZEWELL	ILLINOIS	19	7
FEDERAL ROAD DIST NO.		CONTRACT NO. 6926		



**M** MOHR & KERR ENGINEERING & LAND SURVEYING, P.C.  
 7336 N. University Ave. Office: (309) 692-8500  
 Peoria, Illinois 61614 Fax: (309) 692-8501  
 www.mohrandkerr.com Professional Design Firm #184.005091

REV.	DATE	NATURE OF REVISION	CHECKED	SCALE	DATE
				1" = 5' H 1" = 2' V	02-15-10

CLIENT: VILLAGE OF NORTH PEKIN  
 TAZEWELL COUNTY, ILLINOIS

TITLE: NORTH PEKIN SIDEWALK IMPROVEMENTS  
 ELM STREET CROSS SECTIONS  
 STA. 12+00 TO STA. 15+07.50

PROJECT NO. 09-087  
 SHEET 7 OF 19  
 DRAWING NO. 7