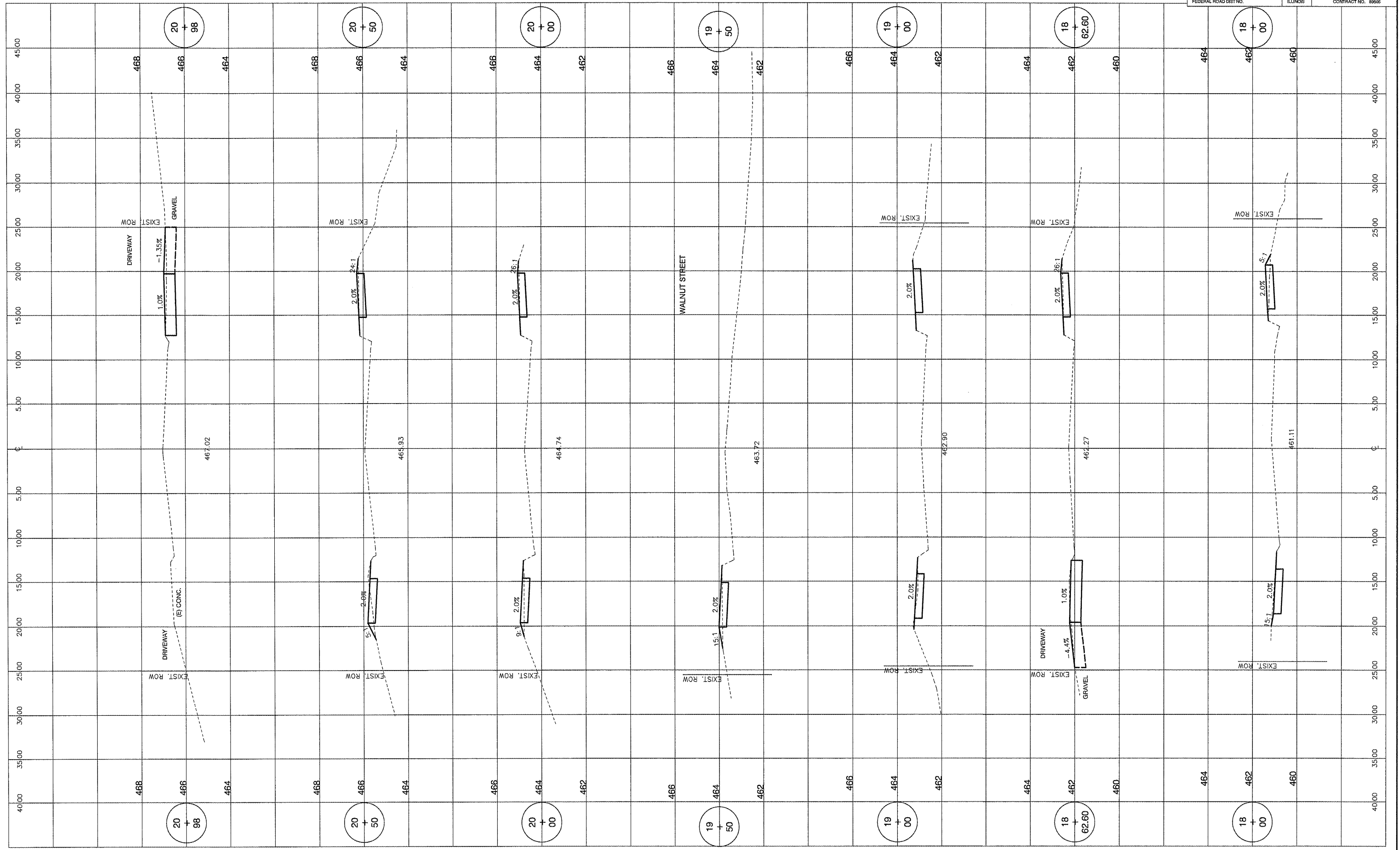


ROUTE NO.	SECTION	COUNTY	TOTAL SHEETS	SHEET NO.
08-00024-00-SW	TAZEWELL	ILLINOIS	19	9
FEDERAL ROAD DIST. NO.		CONTRACT NO. 8966		



**M** MOHR & KERR ENGINEERING & LAND SURVEYING, P.C.  
 7336 N. University Ave. Office: (309) 692-8500  
 Peoria, Illinois 61614 Fax: (309) 692-8501  
 www.mohrandkerr.com Professional Design Firm #184.005091

REV.	DATE	NATURE OF REVISION	CHECKED

FILE NAME: 2109-087 \*DWG\*.DWG

SURVEYED	MDP
DRAWN	DEH
CHECKED	SDK
SCALE	1" = 5' H 1" = 2' V
DATE	02-15-10

CLIENT: VILLAGE OF NORTH PEKIN  
 TAZEWELL COUNTY, ILLINOIS

TITLE: NORTH PEKIN SIDEWALK IMPROVEMENTS  
 ELM STREET CROSS SECTIONS  
 STA. 18+00 TO STA. 20+98

PROJECT NO.	09-087
SHEET	9 OF 19
DRAWING NO.	9