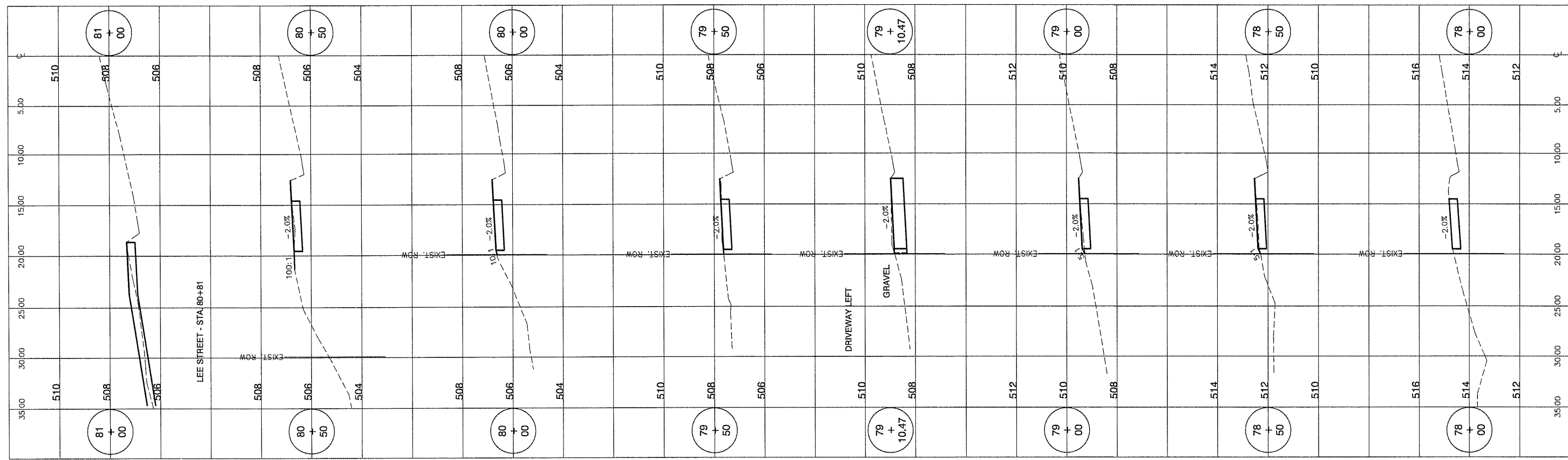
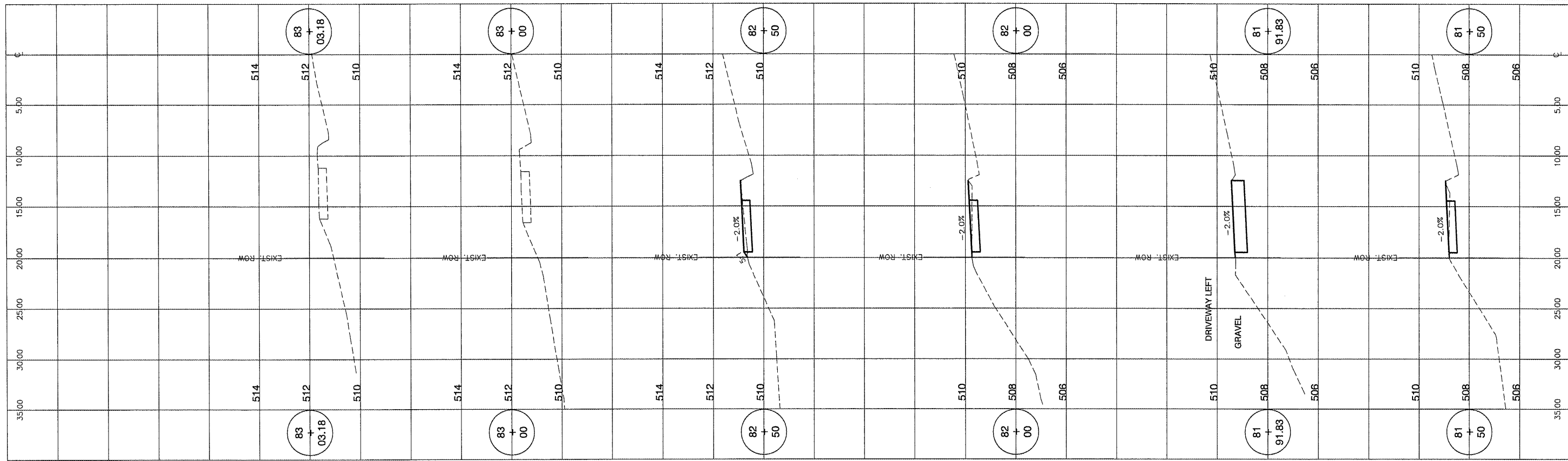


ROUTE NO.	SECTION	COUNTY	TOTAL SHEETS	SHEET NO.
-	08-00024-00-SW	TAZEWELL	19	18
FEDERAL ROAD DIST NO.		ILLINOIS	CONTRACT NO. 8996	



**M** MOHR & KERR ENGINEERING & LAND SURVEYING, P.C.  
 7338 N. University Ave. Office: (309) 692-8500  
 Peoria, Illinois 61614 Fax: (309) 692-8501  
 www.mohrandkerr.com Professional Design Firm #184.005091

REV.	DATE	NATURE OF REVISION	CHECKED

SURVEYED	MOP
DRAWN	DEH
CHECKED	SDK
SCALE	1" = 5' H 1" = 2' V
DATE	02-15-10

CLIENT: VILLAGE OF NORTH PEKIN  
 TAZEWELL COUNTY, ILLINOIS

TITLE: NORTH PEKIN SIDEWALK IMPROVEMENTS  
 McARTHUR DRIVE CROSS SECTIONS  
 STA. 78+00 TO STA 83+03.18

PROJECT NO.	09-087
SHEET 18 OF 19	
DRAWING NO.	18