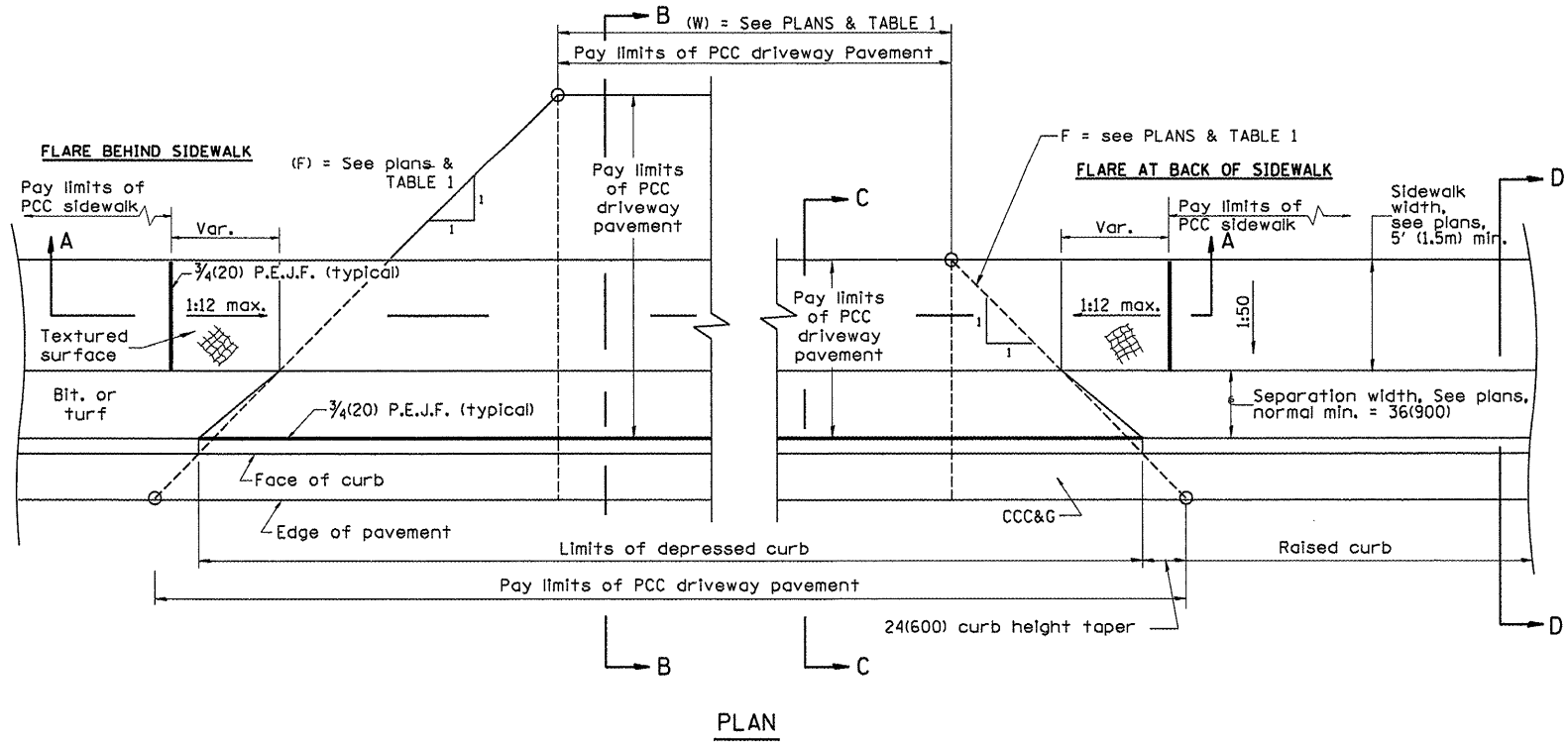
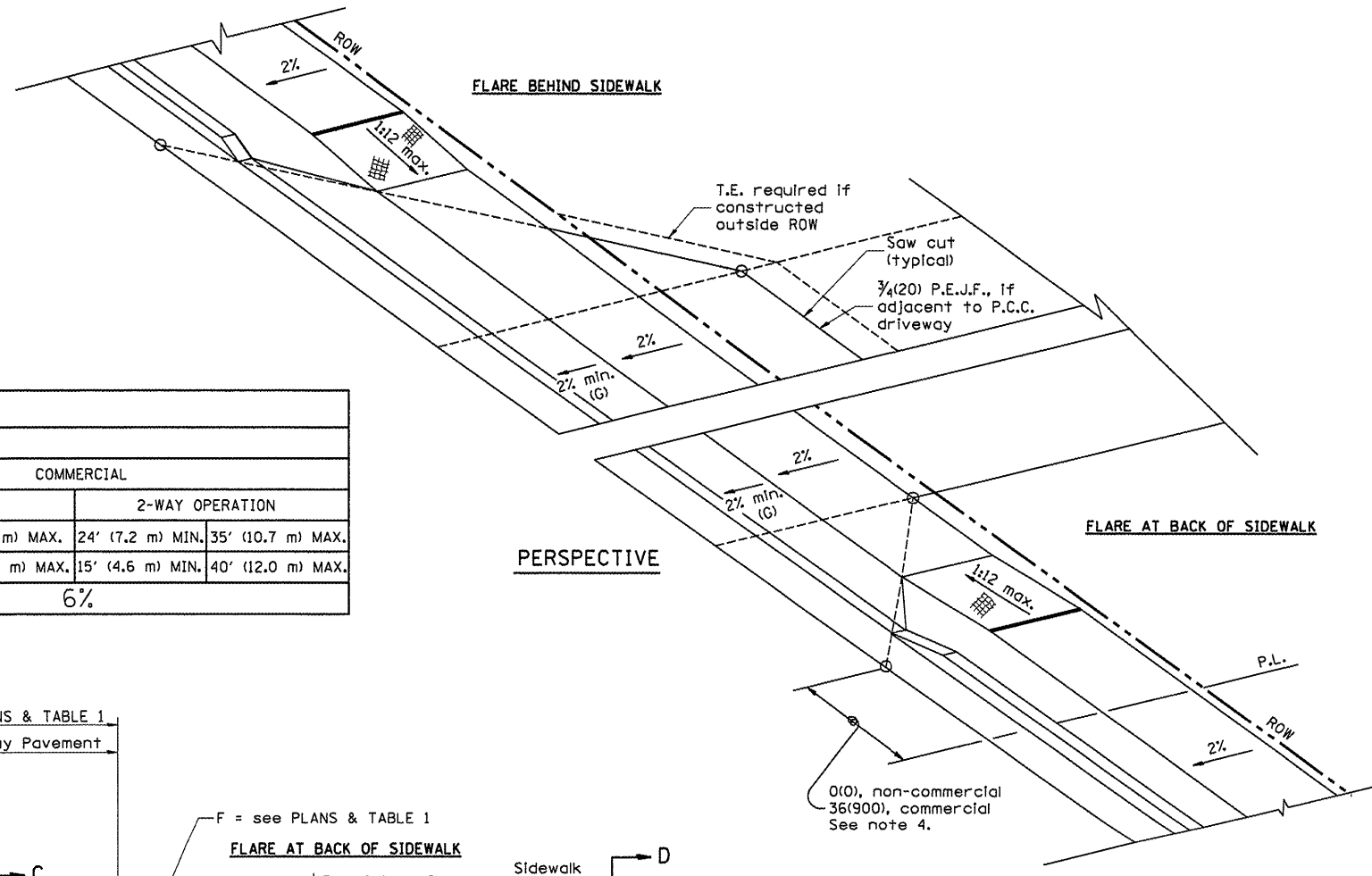


DESIGNER NOTES:  
 1. DESIGNER SHOULD REVIEW "HANDBOOK FOR THE POLICY ON PERMITS FOR ACCESS DRIVEWAYS TO STATE HIGHWAYS"  
 14. FLARES ARE RECOMMENDED FOR SIDEWALKS WITH NARROW SEPARATIONS.  
 2. DESIGNER SHOULD REVIEW BDE CHAPTER 58.  
 3. STATE STANDARD 424001 SHOULD BE INCLUDED IN THE PLANS TO SUPPLEMENT THIS DRAWING

TABLE 1				
URBAN ENTRANCE DESIGN CONTROLS				
ELEMENT	NON-COMMERCIAL		COMMERCIAL	
			1-WAY OPERATION	2-WAY OPERATION
WIDTH (W)	12' (3.6 m) MIN.	24' (7.2 m) MAX.	14' (4.3 m) MIN., 24' (7.2 m) MAX.	24' (7.2 m) MIN., 35' (10.7 m) MAX.
RADIUS EQUIVALENT 1:1 FLARE (F)	5' (1.5 m) MIN.	25' (7.6 m) MAX.	15' (4.6 m) MIN., 40' (12.0 m) MAX.	15' (4.6 m) MIN., 40' (12.0 m) MAX.
MAX. GRADE (G)	8%		6%	



**GENERAL NOTES**

1. Refer to State Standard 424001 for texturing and other disabled accessibility design elements.
2. The sidewalk area located within the pay limits of P.C.C. Driveway Pavement will be of the same thickness and construction as the P.C.C. Driveway Pavement.
3. Combination Concrete Curb & Gutter shall be depressed in accordance with Standard 606001.
4. Exceptions to the radius flare/property line relationship are as shown in the plans for common entrances, with jointly executed access permits.

All dimensions are in inches (millimeters) unless otherwise noted. **89505**

01-01-97	RENUM. C-103.01, NEW REVISION BOX	T.P.	
01-17-03	REMOVE CURB CONTRACTION	J.A.T.R.	
09-15-05	JOINT	M.M.A.	
10-16-06	REVISED TO 2007 SPEC.	M.A.	

**STATE OF ILLINOIS**  
**DEPARTMENT OF TRANSPORTATION**

**URBAN ENTRANCES, ACCESSIBLE TO THE DISABLED,**  
**FOR SEPARATED SIDEWALKS**

F.A. RTE.	SECTION	COUNTY	TOTAL SHEETS	SHEET NO.
				<b>22</b>
CONTRACT NO.			SHT. 1 OF 2	
FED. ROAD DIST. NO.			ILLINOIS FED. AID PROJECT	

NOT TO SCALE

CADD STD. 423106-D4