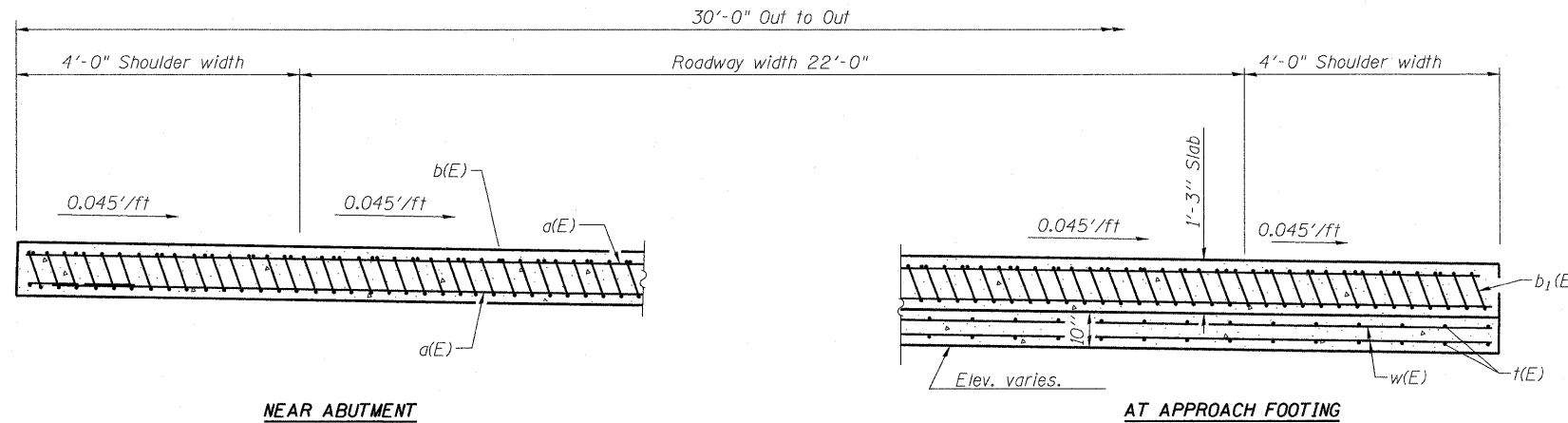
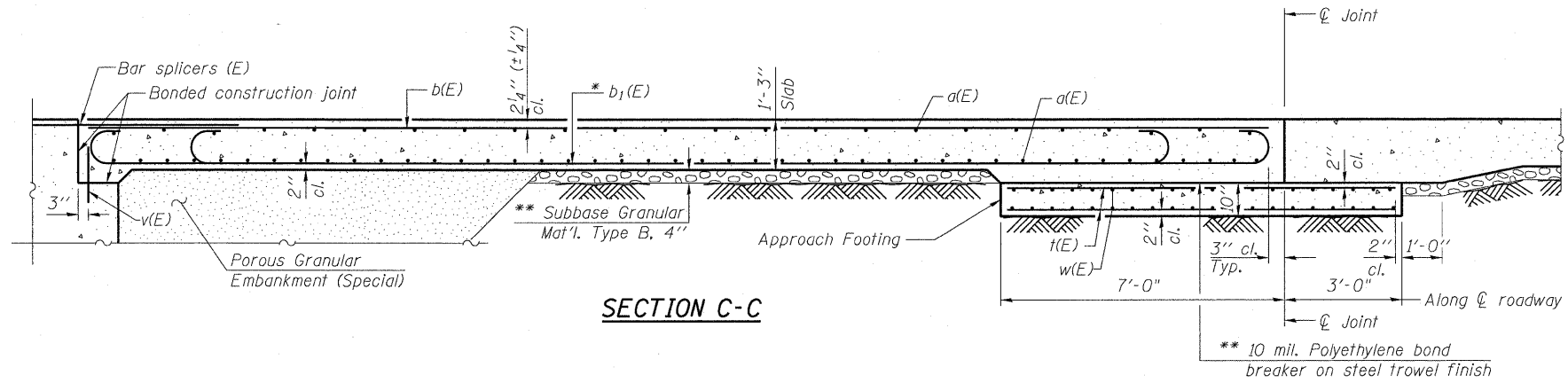


STATE OF ILLINOIS
DEPARTMENT OF TRANSPORTATION

Notes:
Approach slab, approach footing and reinforcement shall be paid for as Bridge Approach Pavement (Special).
For v(E) bar details, see sheet 6 of 17.
The approach footing maximum applied service bearing pressure (Qmax) = 2.0 ksf.
For bar splicer details, see sheet 15 of 17.
Cost of excavation for approach footing included with Bridge Approach Pavement (Special).
For Porous Granular Embankment (Special) and drainage treatment details, see sheet 2 of 17.



* Tilt #9 b₁(E) bars as required to maintain clearance.
** Cost included with Bridge Approach Pavement (Special).

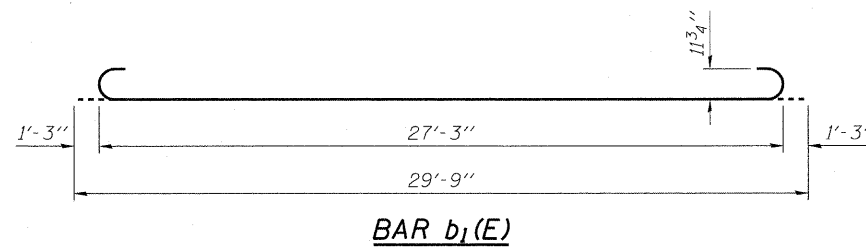
**TWO APPROACHES
BILL OF MATERIAL**
(For information Only)

Bar	No.	Size	Length	Shape
a(E)	142	#4	31'-7"	—
b(E)	62	#4	29'-8"	—
b ₁ (E)	146	#9	29'-9"	⌋
t(E)	124	#4	10'-4"	—
w(E)	80	#5	31'-7"	—
Approach Slab Concrete			Cu. Yd.	88.7
Approach Footing Concrete			Cu. Yd.	18.5
Reinforcement Bars, Epoxy Coated			Pound	22,480

NEAR ABUTMENT

SECTION D-D
(See Plan for dimensions not shown)

AT APPROACH FOOTING



(Sheet 2 of 2)
BRIDGE APPROACH SLAB DETAILS
F.A.S. ROUTE 454
SECTION 04-0070-00-BR
SCHUYLER COUNTY
STATION 4+79.00
S.N. 085-3055



DESIGNED NIEWINSKI
CHECKED TRELLO
DRAWN VERENSKI
CHECKED TRELLO

G&B PROJECT: - PLOT DRIVER = V81.T05700.PS.LOCAL.1007.plt of g
FILE NAME = J:\07258\CADD\CADsheets\SN 085-3055\0853055-07258-Sht-Approach.dgn
PLOT DATE = 9/18/2009 PLOT SCALE = 21:0000 '1' / in. USER NAME = frankv

BA-L 10-31-08

SHEET NO. 12 17 SHEETS	F.A.S. RTE.	SECTION	COUNTY	TOTAL SHEETS	SHEET NO.
	454	04-0070-00-BR	SCHUYLER	30	20
CONTRACT NO. 93499					
FED. ROAD DIST. NO. ILLINOIS FED. AID PROJECT					