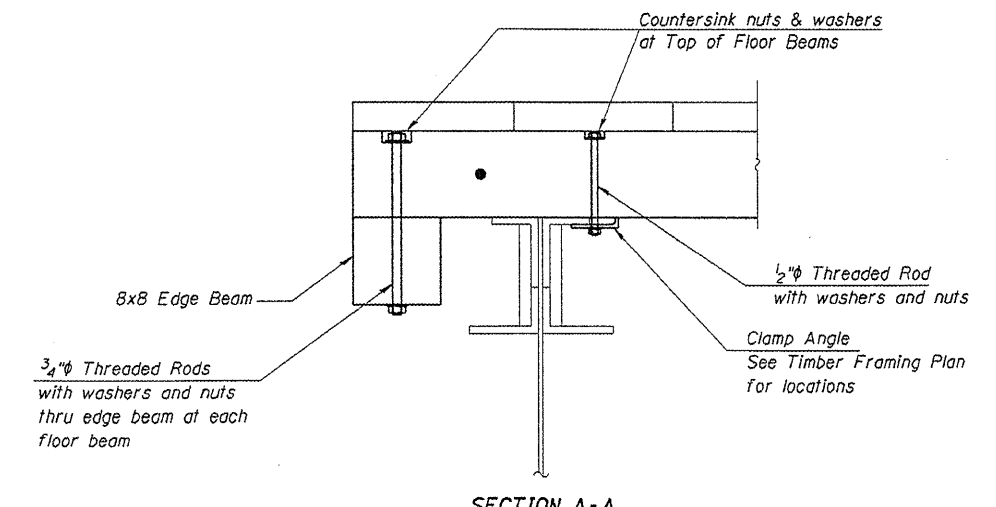
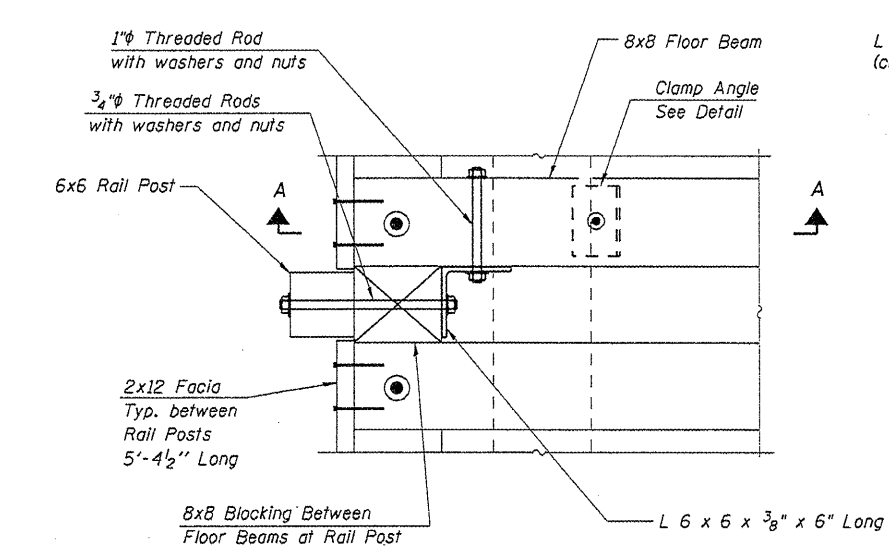


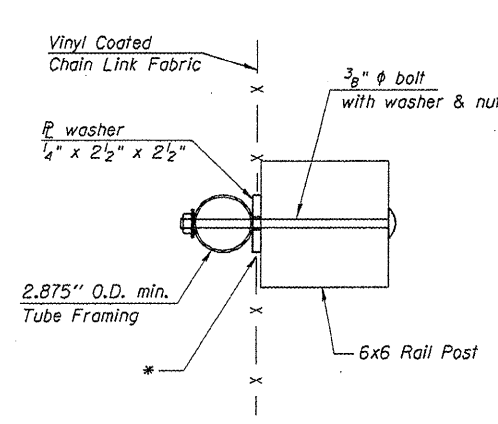
SECTION AT RAIL POST



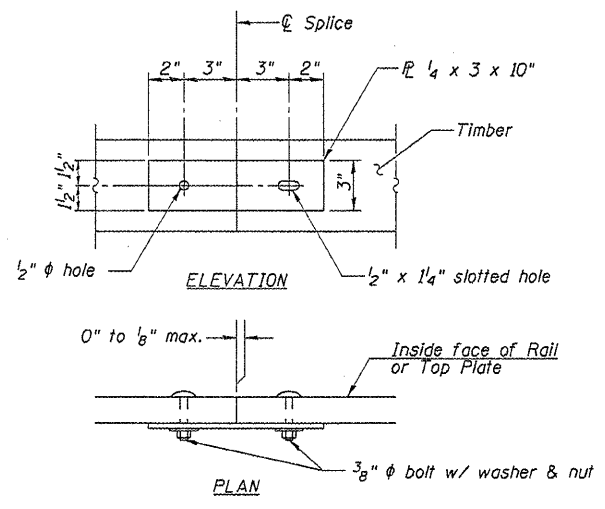
SECTION A-A



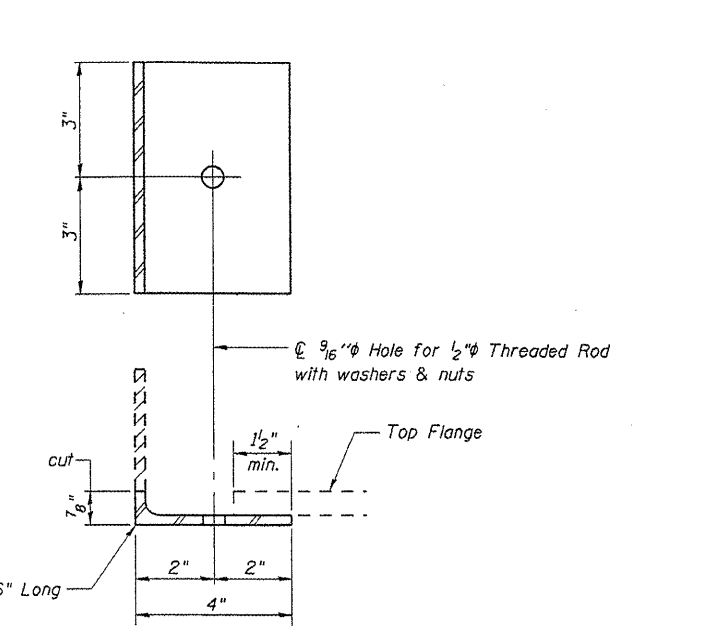
PLAN AT RAIL POST
(Deck Planks Not Shown)



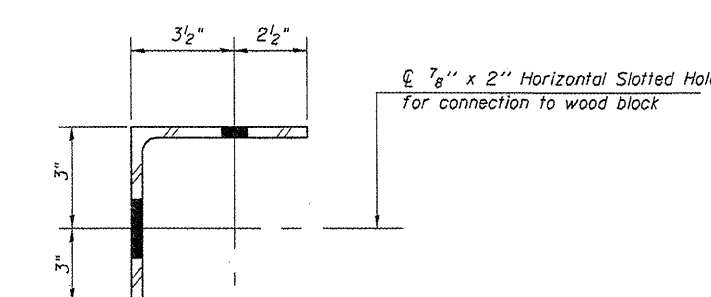
FENCE ATTACHMENT DETAIL



SPLICE DETAIL



CLAMP ANGLE
(32 Required)



L 6 x 6
TIMBER BLOCK ANGLE
(16 Required)

* Weight of angles included in the weight of Hardware.

TIMBER DETAILS
SANGAMON VALLEY TRAIL
OVER WASHINGTON STREET
SVT BRIDGE NO. 13
STRUCTURE NO. 084-9924

CEC Civil and Structural Engineering	Cummins Engineering Corporation	JOB = 2192	DESIGNED M.D.C.
		FILE = 2192wash_super	CHECKED A.A.N.
		DATE = 1/8/2010	DRAWN T.S.H.
			CHECKED M.D.C.

Revised 4-13-10

* Cut and Knuckle chain link fabric as required.

Note: Minimize splices in rails and top plate. Where possible span 3 rail posts.

Sheet 5 of 6	RTE.	SECTION	COUNTY	TOTAL SHEETS	SHEET NO.
	SVT	05-00173-00-BT	SANGAMON	173	92
	SANGAMON VALLEY TRAIL			CONTRACT NO. 93522	
FED. ROAD DIST. NO. 6 ILLINOIS FED. AID PROJECT					