

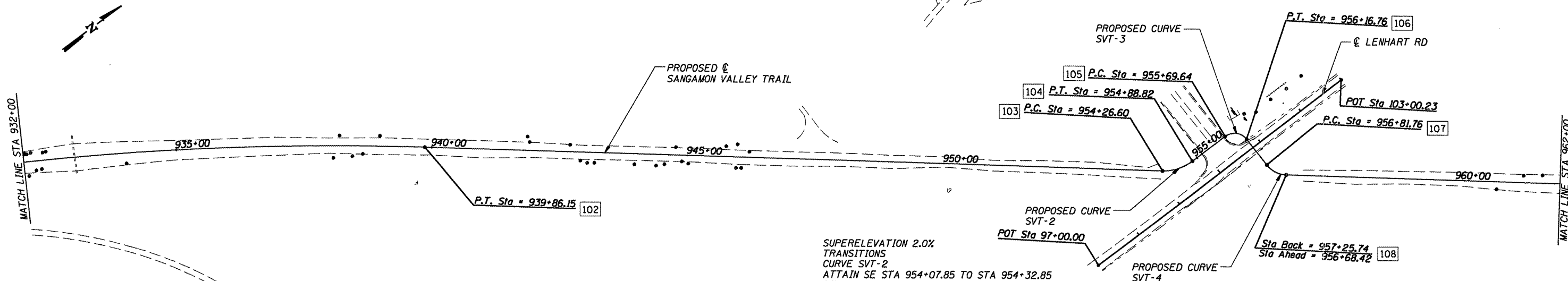
COORDINATE DATA:

90	N	1125373.75
	E	2410617.72
91	N	1125460.75
	E	2410617.96
92	N	1125460.39
	E	2410751.12
93	N	1125454.02
	E	24110793.95
94	N	1125452.50
	E	2410799.01

PROPOSED CURVE DATA:

CURVE CONN-90

PI STA	11+55.04
Δ	16° 35' 49"
D	38° 11' 50"
T	21.88
R	150.00
L	43.45
E	1.59
PC STA	11+33.16
PT STA	11+55.04



COORDINATE DATA:

100	N	1123676.23
	E	2410557.46
101	N	1123683.77
	E	2410557.31
102	N	1127376.39
	E	2411808.95
103	N	1128501.51
	E	2412708.39
104	N	1128559.23
	E	2412728.08
105	N	1128640.04
	E	2412726.71
106	N	1128670.54
	E	2412756.20
107	N	1128671.64
	E	2412821.19
108	N	1128690.41
	E	2412859.40

SUPERELEVATION 2.0% TRANSITIONS

CURVE SVT-2
 ATTAIN SE STA 954+07.85 TO STA 954+32.85
 REMOVE SE STA 954+82.57 TO STA 955+07.57

CURVE SVT-4
 ATTAIN SE STA 956+63.01 TO STA 956+88.01
 REMOVE SE STA 957+19.49 TO STA 956+87.17 AH

PROPOSED CURVE DATA:

CURVE SVT-1	CURVE SVT-2	CURVE SVT-3	CURVE SVT-4
PI STA 920+81.03	PI STA 954+59.01	PI STA 955+99.64	PI STA 957+05.29
Δ 39° 49' 51"	Δ 39° 36' 29"	Δ 90° 00' 00"	Δ 50° 23' 29"
D 1° 00' 04"	D 63° 39' 43"	D 190° 59' 09"	D 114° 35' 30"
T 2073.49	T 32.41	T 30.00	T 23.52
R 5723.15	R 90.00	R 30.00	R 50.00
L 3978.61	L 62.22	L 47.12	L 43.97
E 364.03	E 5.66	E 12.43	E 5.26
PC STA 900+07.54	PC STA 954+26.60	PC STA 955+69.64	PC STA 956+81.76
PT STA 939+86.15	PT STA 954+88.82	PT STA 956+16.76	PT STA 957+25.74

CUMMINS ENGINEERING CORPORATION

JOB = 2192	DESIGNED - NAK	REVISED -
FILE NAME = 2192align.dgn	DRAWN - AJH	REVISED -
PLOT SCALE = 200.000' / IN.	CHECKED - NAK	REVISED -
PLOT DATE = 6/5/2009	DATE - 01/09/2009	REVISED -

SANGAMON VALLEY TRAIL

ALIGNMENT

F.A.S. RTE.	SECTION	COUNTY	TOTAL SHEETS	SHEET NO.
	05-00173-00-BT	SANGAMON	173	14
CONTRACT NO. 93522				
FED. ROAD DIST. NO.	ILLINOIS FED. AID PROJECT			